

UNITED STATES  
DEPARTMENT OF THE INTERIOR  
BUREAU OF LAND MANAGEMENT

APPLICATION FOR PERMIT TO DRILL, DEEPEN, OR PLUG BACK

1a. TYPE OF WORK

DRILL ☒

DEEPEN ☐

PLUG BACK ☐

b. TYPE OF WELL

OIL  
WELL ☐

GAS  
WELL ☒

OTHER

SINGLE  
ZONE ☒

MULTIPLE  
ZONE ☐

2. NAME OF OPERATOR

Caulkins Oil Company

3. ADDRESS OF OPERATOR

P.O. Box 340 Bloomfield, New Mexico 87413

4. LOCATION OF WELL (Report location clearly and in accordance with any State requirements)

At surface

1515' F/S and 1810' F/W

At proposed prod. zone Same

14. DISTANCE IN MILES AND DIRECTION FROM NEAREST TOWN OR POST OFFICE\*

35 miles Southwest of Blanco New Mexico

15. DISTANCE FROM PROPOSED\*

LOCATION TO NEAREST

PROPERTY OR LEASE LINE, FT.

(Also to nearest drlg. unit line, if any)

1515'

18. DISTANCE FROM PROPOSED LOCATION\*

TO NEAREST WELL, DRILLING, COMPLETED,

OR APPLIED FOR, ON THIS LEASE, FT.

1000'

16. NO. OF ACRES IN LEASE

1760

19. PROPOSED DEPTH

3200'

17. NO. OF ACRES ASSIGNED

TO THIS WELL

160

20. ROTARY OR CABLE TOOLS

Rotary

21. ELEVATIONS (Show whether DF, RT, GR, etc.)

DEEPENING OPERATIONS AUTHORIZED ARE

6706 GR

22. APPROX. DATE WORK WILL START\*

June 15, 1989

23. SUBJECT TO COMPLIANCE WITH ATTACHED

"GENERAL REQUIREMENTS"

PROPOSED CASING AND CEMENTING PROGRAM

This action is subject to technical and  
procedural review pursuant to 43 CFR 3165.3  
and appeal pursuant to 43 CFR 3165.4.

SIZE OF HOLE	SIZE OF CASING	WEIGHT PER FOOT	SETTING DEPTH	QUANTITY OF CEMENT
12 1/4"	8 5/8"	24#	200'	230 Cu.Ft.
7 7/8"	4 1/2"	10.5#	3200'	800 Cu.Ft.

This proposed well to replace old Pictured Cliffs well with mechanical problems.  
Old well location 1580' F/S and 995' F/W Section 24, 26N 6W.

Request for abandonment of old well will be made under separate cover.

It is proposed to drill new hole surface to 3200' using 9.0# Gel based mud.  
Float will be run in drill pipe at bit. ES Gamma and Porosity Logs will be  
run in open hole.

A Schaeffer 10" Model LWP, 6000# test BOP will be in use at all times while drilling  
below surface casing and until production casing is cemented. BOP will be  
tested at least one time during each 24 hour period and results recorded on  
daily drilling report.

(OVER)

IN ABOVE SPACE DESCRIBE PROPOSED PROGRAM: If proposal is to deepen or plug back, give data on present productive zone and proposed new productive  
zone. If proposal is to drill or deepen directionally, give pertinent data on subsurface locations and measured and true vertical depths. Give blowout  
preventer program, if any.

24.

SIGNED

*Charles E. Dwyer*

TITLE

Superintendent

DATE

3-22-89

(This space for Federal or State office use)

PERMIT NO.

APPROVAL DATE

APPROVED BY

TITLE

DATE

"Approval of this action does

not warrant that the person making

holds legal or equitable rights

or title to this land.

\*See Instructions On Reverse Side

United States makes it a crime for any person knowingly and willfully to make to any department or agency of the  
United States any false, fictitious or fraudulent statements or representations as to any matter within its jurisdiction.

5. LEASE DESIGNATION AND SERIAL NO.

NM 03554

6. IF INDIAN, ALLOTTEE OR TRIBE NAME

7. UNIT AGREEMENT NAME

8. FARM OR LEASE NAME

Breech "C"

9. WELL NO.

299-R

10. FIELD AND POOL, OR WILDCAT

S. Blanco Pictured Cliffs

11. SEC., T., R., M., OR BLK.

AND SURVEY OR AREA

Section 14, 26North 6 West

12. COUNTY OR PARISH

Rio Arriba

13. STATE

New Mexico

RECEIVED  
APR 11 1989  
OIL CON. DIV.  
DIST. 3

APPROVED

AS AMENDED

APR 06 1989

AREA MANAGER

New 8 5/8" 24# 8rd thd casing will be set at approx 200' and cemented with 175 Cu.Ft. Neat Cement.

New 4 1/2" 10.5# J-55 Smls casing will be run surface to TD then cemented with sufficient cement to circulate to surface. Approx 600 Cu.Ft. 50-50 Pos, 6% Gel followed by 200 Cu.Ft. Neat Cement.

Pictured Cliffs Zone will be perforated and sand fractured to stimulate production.

Estimated Formation Tops and Bottoms:

Alamo	2540' to 2615'
Fruitland	2960' to 3040'
Pictured Cliffs	3010' to 3180'

All distances must be from the outer boundaries of the Section.

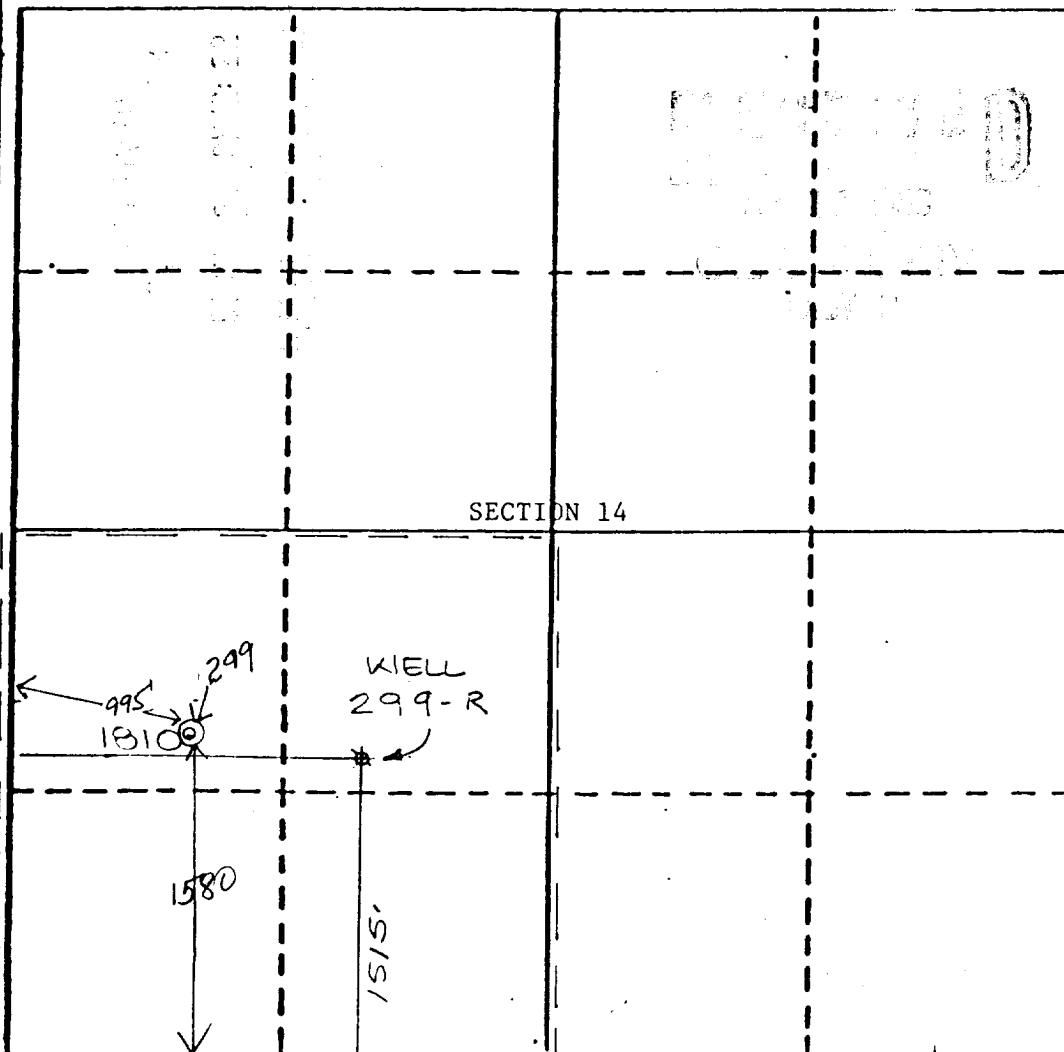
Operator CAULKINS OIL COMPANY			Lease NM 03554 <i>Breesh C</i>		Well No. 299-R
Unit Letter K	Section 14	Township 26 NORTH	Range 6 WEST	County RIO ARRIBA	
Actual Footage Location of Well 1515 feet from the SOUTH line and 1810 feet from the WEST line					
Ground Level Elev. 6706	Producing Formation Pictured Cliffs		Pool South Blanco	Dedicated Acreage 160 Acres	

1. Outline the acreage dedicated to the subject well by colored pencil or hachure marks on the plat below.
2. If more than one lease is dedicated to the well, outline each and identify the ownership thereof (both as to working interest and royalty).
3. If more than one lease of different ownership is dedicated to the well, have the interests of all owners been consolidated by communitization, unitization, force-pooling, etc?

☐ Yes ☐ No If answer is "yes," type of consolidation \_\_\_\_\_

If answer is "no," list the owners and tract descriptions which have actually been consolidated. (Use reverse side of this form if necessary.) \_\_\_\_\_

No allowable will be assigned to the well until all interests have been consolidated (by communitization, unitization, forced-pooling, or otherwise) or until a non-standard unit, eliminating such interests, has been approved by the Commission.



## CERTIFICATION

I hereby certify that the information contained herein is true and complete to the best of my knowledge and belief.

*Charles E. Verquer*  
Name  
Charles E. Verquer

Position  
Superintendent

Company  
Caulkins Oil Company

Date  
2-24-89

I hereby certify that the well location shown on this plat was plotted from field notes of actual surveys made by me or under my supervision and that the same is true and correct to the best of my knowledge and belief.

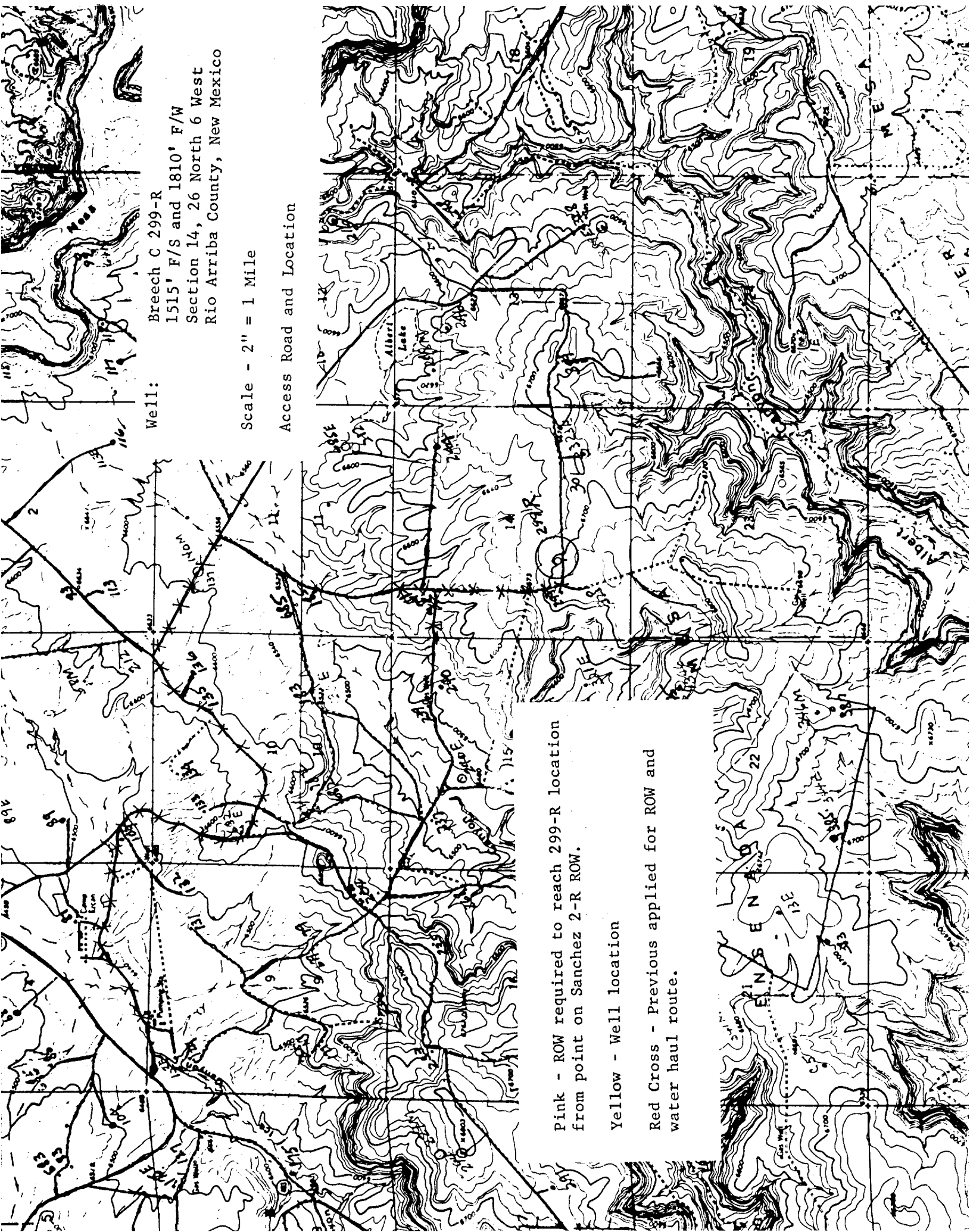
Date Surveyed  
DECEMBER 14, 1988

Registered Professional Engineer  
and/or Land Surveyor

J. ROGER MILLER

Certificate No.

9752



Well:

Breech C 299-R  
1515' F/S and 1810' F/W  
Section 14, 26 North 6 West  
Rio Arriba County, New Mexico

Scale - 2" = 1 Mile

Access Road and Location

Pink - ROW required to reach 299-R location  
from point on Sanchez 2-R ROW.

Yellow - Well location

Red Cross - Previous applied for ROW and  
water haul route.