

RECEIVED

APR 24 1990

OIL CON. DIV.

DIST. 3

UNITED STATES
DEPARTMENT OF THE INTERIOR
BUREAU OF LAND MANAGEMENT

30-039-24709

APPLICATION FOR PERMIT TO DRILL, DEEPEN, OR PLUG BACK

1a. TYPE OF WORK DRILL		5. LEASE NUMBER SF-079160	
1b. TYPE OF WELL GAS		6. IF INDIAN, ALL. OR TRIBE NAME	
2. OPERATOR UNION OIL CO. OF CAL.		7. UNIT AGREEMENT NAME RINCON UNIT	
3. ADDRESS OF OPERATOR P O BOX 2074 FARMINGTON, NM, 87401 (505)-325-8786		8. FARM OR LEASE NAME RINCON <i>unit</i>	
		9. WELL NO. 269	
4. LOCATION OF WELL 1800' FSL, 1200' FWL		10. FIELD, POOL, OR WILDCAT BASIN FRUITLAND COAL	
		11. SEC. 12, T. 26N, R. 7W	
14. DISTANCE FROM NEAREST TOWN 40 Miles SE of Bloomfield		12. COUNTY Rio Arriba	13. STATE New Mex.
15. DISTANCE FROM PROPOSED LOCATION TO NEAREST PROPERTY OR LEASE LINE 1200'	16. ACRES IN LEASE <i>1920.80</i>		17. ACRES ASSIGNED TO WELL <i>3/320</i>
18. DISTANCE FROM PROPOSED LOCATION TO NEAREST WELL DRILLING, COMPLETED OR APPLIED FOR ON THIS LEASE: 284'	19. PROPOSED DEPTH 3125'	20. ROTARY OR CABLE TOOLS Rotary	
21. ELEVATIONS (DF, FT, GR, ETC.) 6495' GL		22. APPROX. DATE WORK WILL BEGIN Spring 1990	
23. PROPOSED CASING AND CEMENTING PROGRAM SEE ATTACHED DRILLING PLAN			
24. AUTHORIZED BY: <i>Chris Russell</i> AGENT		<i>3/23/90</i> DATE	
PERMIT NO. _____ APPROVAL DATE _____			
APPROVED BY _____ TITLE _____ DATE _____			
NOTE: THIS FORMAT IS ISSUED IN LIEU OF BLM FORM 3160-3			

APPROVED
AS AMENDED

APR 20 1990

AREA MANAGER

NMOCD

RECEIVED
JUN 1 1964

U.S. AIR FORCE
OFFICE OF THE
JOINT CHIEFS OF STAFF
WASHINGTON, D.C.

U.S. AIR FORCE
OFFICE OF THE
JOINT CHIEFS OF STAFF
WASHINGTON, D.C.

Submit to Appropriate
District Office
State Lease - 4 copies
Fee Lease - 3 copies

State of New Mexico
Energy, Minerals and Natural Resources Department

Form C-102
Revised 1-1-89

OIL CONSERVATION DIVISION

P.O. Box 2088
Santa Fe, New Mexico 87504-2088

DISTRICT I
P.O. Box 1980, Hobbs, NM 88240

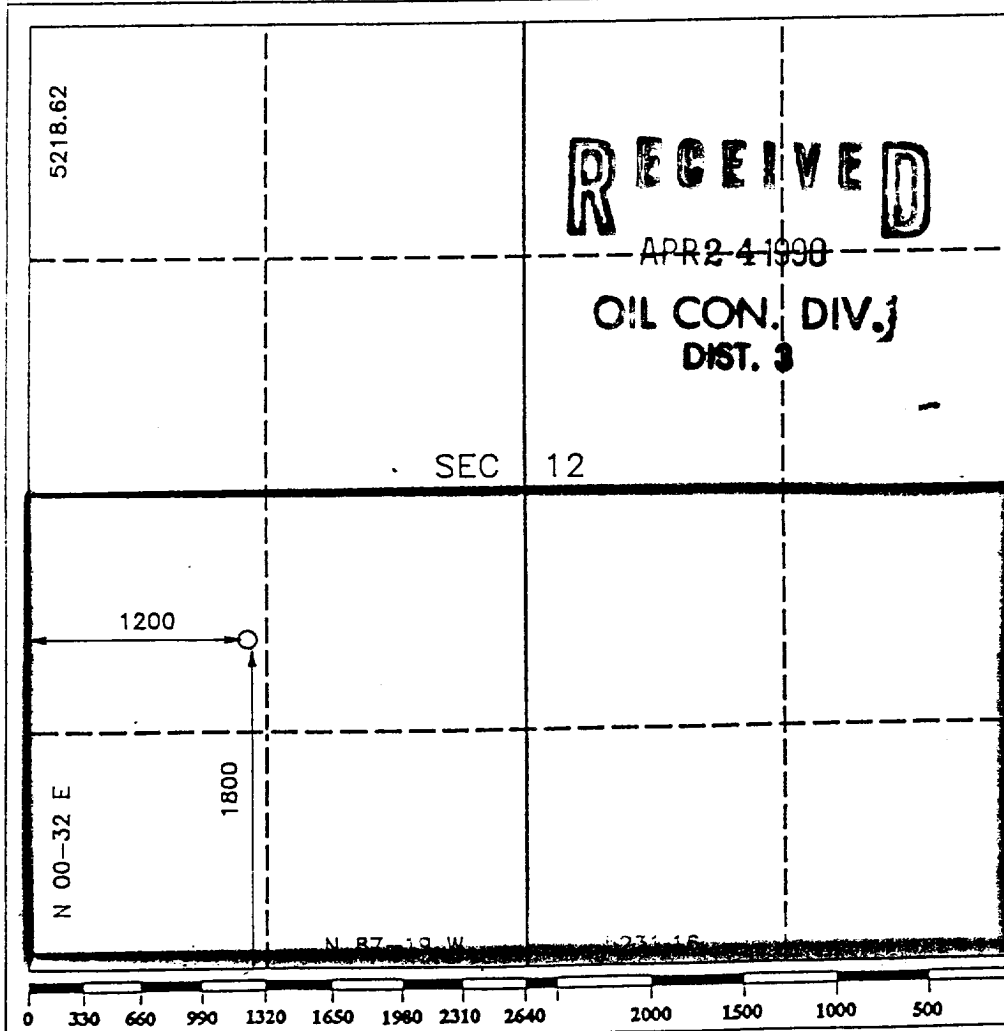
DISTRICT II
P.O. Drawer DD, Artesia, NM 88210

DISTRICT III
1000 Rio Brazos Rd., Aztec, NM 87410

WELL LOCATION AND ACREAGE DEDICATION PLAT

All Distances must be from the outer boundaries of the section

Operator UNION OIL CO. OF CALIFORNIA		Lease RINCON UNIT		Well No. 269
Unit Letter L	Section 12	Township T.26 N.	Range R.7 W.	County RIO ARRIBA COUNTY
Actual Footage Location of Well: 1800 feet from the SOUTH line and 1200 feet from the WEST line				
Ground level Elev. 6495	Producing Formation Fruitland Coal	Pool Basin Fruitland Coal	Dedicated Acreage: 3.20 Acres	
<p>1. Outline the acreage dedicated to the subject well by colored pencil or hatchure marks on the plat below.</p> <p>2. If more than one lease is dedicated to the well, outline each and identify the ownership thereof (both as to working interest and royalty).</p> <p>3. If more than one lease of different ownership is dedicated to the well, have the interest of all owners been consolidated by communitization, unitization, force-pooling, etc.? <input checked="" type="checkbox"/> Yes <input type="checkbox"/> No If answer is "yes" type of consolidation <u>UNITIZATION</u> If answer is "no" list the owners and tract descriptions which have actually been consolidated. (Use reverse side of this form if necessary.) No allowable will be assigned to the well until all interests have been consolidated (by communitization, unitization, force-pooling, or otherwise) or until a non-standard unit, eliminating such interest, has been approved by the Division.</p>				



OPERATOR CERTIFICATION

I hereby certify that the information contained herein is true and complete to the best of my knowledge and belief.

Signature
Chris Russell
Printed Name
Chris Russell
Position
AGENT
Company
UNOCA
Date
3/23/90

SURVEYOR CERTIFICATION

I hereby certify that the well location shown on this plat was plotted from field notes of actual surveys made by me or under my supervision, and that the same is true and correct to the best of my knowledge and belief.

Date Surveyed
MARCH 12 1990
Signature & Seal of Professional Surveyor
R. HOWARD DAGGETT
R. Howard Daggett
Registered Professional
Land Surveyor
9679

RINCON UNIT WELL NO. 269
DRILLING PROGRAM - PAGE 2.

Testing Procedure:

The BOP and related equipment will be tested to 2000 psi in accordance with the provisions of Onshore Oil and Gas Order No. 2.

BOP's will be operationally tested daily, and each test will be logged in the IADC Daily Drilling Report.

Blooie line:

The blooie line and related equipment will meet all requirements of Onshore Oil and Gas Order No. 2.

4. CASING AND CEMENTING PROGRAM

<u>SURFACE CASING</u>						
<u>AGE</u>	<u>Depth</u>	<u>Hole Size</u>	<u>Size</u>	<u>Weight</u>	<u>Grade</u>	<u>Thread</u>
New	0-225'	12-1/4"	8-5/8"	24.0#	K-55	ST&C

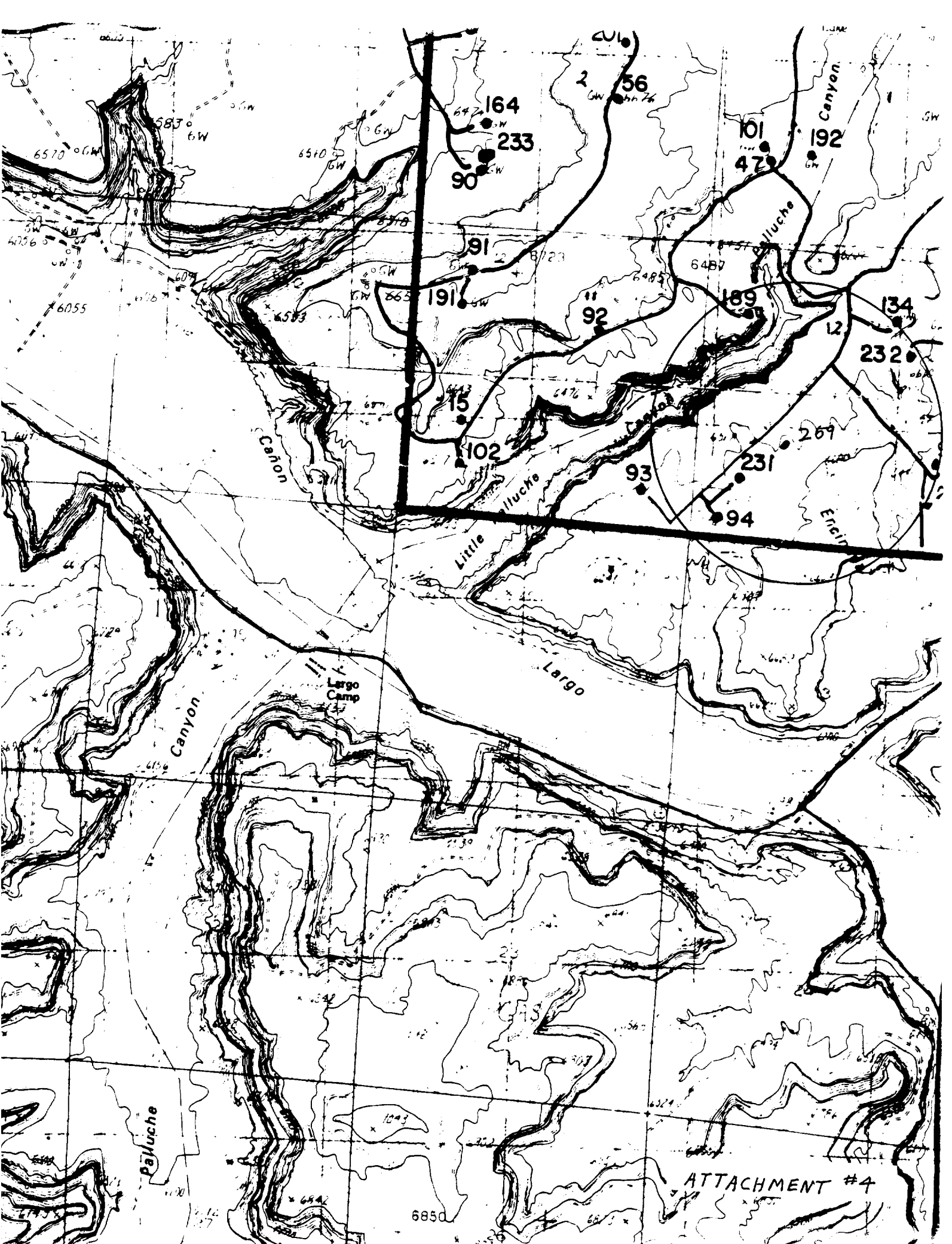
<u>INTERMEDIATE CASING</u>						
<u>Age</u>	<u>Depth</u>	<u>Hole Size</u>	<u>Size</u>	<u>Weight</u>	<u>Grade</u>	<u>Thread</u>
New	0-TD	7-7/8"	4-1/2"	10.5#	K-55	ST&C

MINIMUM SAFETY FACTORS

Collapse: 1.0
Tension: 1.8
Burst: 1.0

Cementing Program:

1. The 8-5/8" surface casing will be cemented to the surface with 175 sacks of class "B" cement with 2% CaCl₂ and 1/4# per sack flocele.
2. The 4-1/2" production casing will be cemented in 2 stages with the DV tool set at 2900'. 1st stage will be cemented with 85 sacks class "H" cement with .95% Flo-Lock-1, 18% Thrifty Lite, 3% KCL, 3# Hi-seal. 2nd stage will be cemented with 325 sacks pacesetter lite with 6% gel, 1/3# cello-seal. .8% CF-1, 3# Hi-seal followed with 50 sacks class "C" cement. Actual cement volumes will be calculated from open hole logs and will be designed to circulate to surface.



ATTACHMENT #4