

UNITED STATES
DEPARTMENT OF THE INTERIOR
BUREAU OF LAND MANAGEMENT

APPLICATION FOR PERMIT TO DRILL, DEEPEN, OR PLUG BACK

1a. TYPE OF WORK

DRILL ☒

DEEPEN ☐

PLUG BACK ☐

b. TYPE OF WELL

OIL
WELL ☐

GAS
WELL ☒

OTHER

2. NAME OF OPERATOR

Union Oil Company of California

3. ADDRESS OF OPERATOR

3300 N. Butler, Suite 200, Farmington, NM 87401

4. LOCATION OF WELL (Report location clearly and in accordance with any State requirements.)

At surface

1020' FNL - 970' FWL Sec. 1, T26N, R7W

At proposed prod. zone

7431

14. DISTANCE IN MILES AND DIRECTION FROM NEAREST TOWN OR POST OFFICE*

21.5 Miles SE of Blanco, N.M.

15. DISTANCE FROM PROPOSED*

LOCATION TO NEAREST
PROPERTY OR LEASE LINE, FT.
(Also to nearest drig. unit line, if any)

970' FWL

16. NO. OF ACRES IN LEASE

2560.80

17. NO. OF ACRES ASSIGNED
TO THIS WELL

3207.60

18. DISTANCE FROM PROPOSED LOCATION*

TO NEAREST WELL, DRILLING, COMPLETED,
OR APPLIED FOR, ON THIS LEASE, FT.

1100'

19. PROPOSED DEPTH

7431

20. ROTARY OR CABLE TOOLS

Rotary

21. ELEVATIONS (Show whether DF, RT, GR, etc.)

6536' GL DRILLING OPERATIONS AUTHORIZED ARE
SPECIAL TO BE USED WITH ATTACHED

22. APPROX. DATE WORK WILL START*

23. GENERAL REQUESTS: PROPOSED CASING AND CEMENTING PROGRAM

SIZE OF HOLE	SIZE OF CASING	WEIGHT PER FOOT	SETTING DEPTH	QUANTITY OF CEMENT
17 1/2	13 3/8	48# H-40	500'	708 cuft/Circ. to Surf.
12 1/4	9 5/8	40# K-55	(800)-4300'	Stage 1: 776 cuft/Circ. to DV
	9 5/8	36# K-55	0 -3500'	Stage 2: 1316 cuft/Circ. to Surf.
DV Tool @ 2639'				
8 3/4	7	26# N-80	(3131)-7431'	Stage 1: 303 cuft/Circ. to DV
	7	23# K-55	(4300)	Stage 2: 424 cuft/Circ. to 9 5/8

DV Tool @ 5900'

Proposed to spud in San Jose Formation. Will drill a 17 1/2" hole to a TD of 500'. Run and cement surface casing with returns to surface. WOC 18 hours. Pressure test to 600 psi/30 minutes. Drill a 12 1/4" hole to a TD of 4300' using fresh water mud. Logs will be run @ TD. Coring is anticipated of the chakra intervals. Run and cement intermediate casing in two stages with returns to surface. WOC 18 hours. Pressure test to 1500 psi/30 minutes. Drill 8 3/4" to a TD of 7431' using air/mist. Logs will be run @ TD. Run and cement production casing in two stages with returns to intermediate casing shoe. WOC 6 hours. The Mesa Verde and Dakota intervals will be selectively perforated and stimulated with fresh water or fresh water based gel fluids. Surface ownership is BLM.

IN ABOVE SPACE DESCRIBE PROPOSED PROGRAM: If proposal is to deepen or plug back, give data on present productive zone and proposed new productive zone. If proposal is to drill or deepen directionally, give pertinent data on subsurface locations and measured and true vertical depths. Give blowout preventer program, if any.

24.

SIGNED

Bill Alering

TITLE District Petroleum Engineer DATE 03/18/91

(This space for Federal or State office use)

PERMIT NO.

RECEIVED

APPROVAL DATE

APPROVED
AS AMENDED

APPROVED BY

APR 15 1991

TITLE

CONDITIONS OF APPROVAL, IF ANY

OIL CON. DIV.
DIST. 3

NMOCD

*See Instructions On Reverse Side

APR 12 1991
AREA MANAGER

APPROVED
FOR AMENDMENT

DATE: 10/10/10

BY: [Signature]

RECEIVED
10/10/10
10

NOV 10 2010
8 130

Submit to Appropriate
District Office
State Lease - 4 copies
Fee Lease - 3 copies

State of New Mexico
Energy, Minerals and Natural Resources Department

Form C-102
Revised 1-1-89

OIL CONSERVATION DIVISION

P.O. Box 2088
Santa Fe, New Mexico 87504-2088

RECEIVED
BLM

91 MAR 20 AM 8:47

010 FARINGTON, N.M.

DISTRICT I
P.O. Box 1980, Hobbs, NM 88240

DISTRICT II
P.O. Drawer DD, Artesia, NM 88210

DISTRICT III
1000 Rio Brazos Rd., Aztec, NM 87410

WELL LOCATION AND ACREAGE DEDICATION PLAT

All Distances must be from the outer boundaries of the section

Operator UNOCAL		Lease RINCON		Well No. 192 ME
Unit Letter D	Section 1	Township 26N	Range 7W	County NMPM
Actual Footage Location of Well: 1020 feet from the North line and 970 feet from the West line				
Ground level Elev. 6536	Producing Formation Dakota - Gallup	Pool Basin - Largo	Dedicated Acreage: 320.60 320.60/160.60 Acres	

1. Outline the acreage dedicated to the subject well by colored pencil or hatchure marks on the plat below.

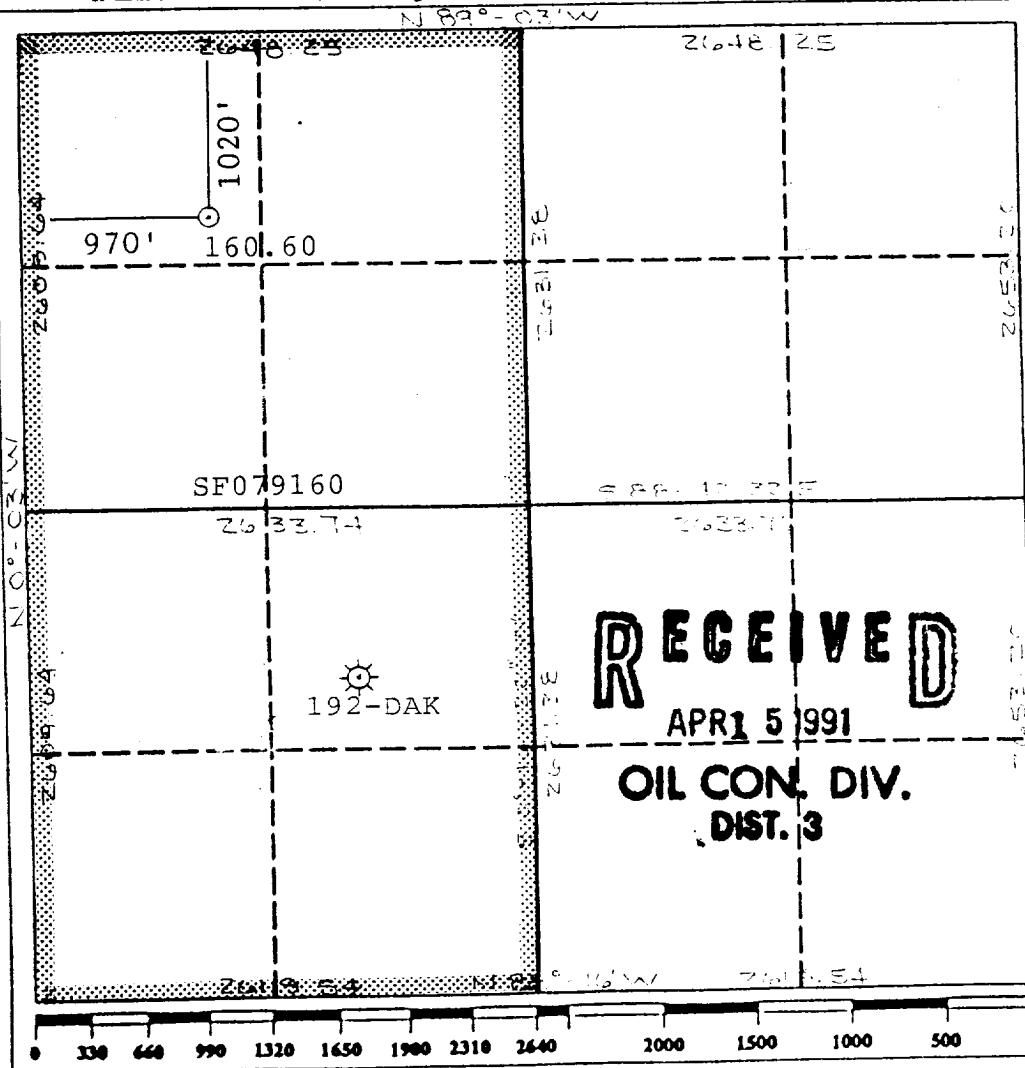
2. If more than one lease is dedicated to the well, outline each and identify the ownership thereof (both as to working interest and royalty).

3. If more than one lease of different ownership is dedicated to the well, have the interest of all owners been consolidated by communitization, unitization, force-pooling, etc.?

☐ Yes ☐ No If answer is "yes" type of consolidation **N/A**

If answer is "no" list the owners and tract descriptions which have actually been consolidated. (Use reverse side of this form if necessary).

No allowable will be assigned to the well until all interests have been consolidated (by communitization, unitization, forced-pooling, or otherwise) or until a non-standard unit, eliminating such interest, has been approved by the Division.



OPERATOR CERTIFICATION

I hereby certify that the information contained herein is true and complete to the best of my knowledge and belief.

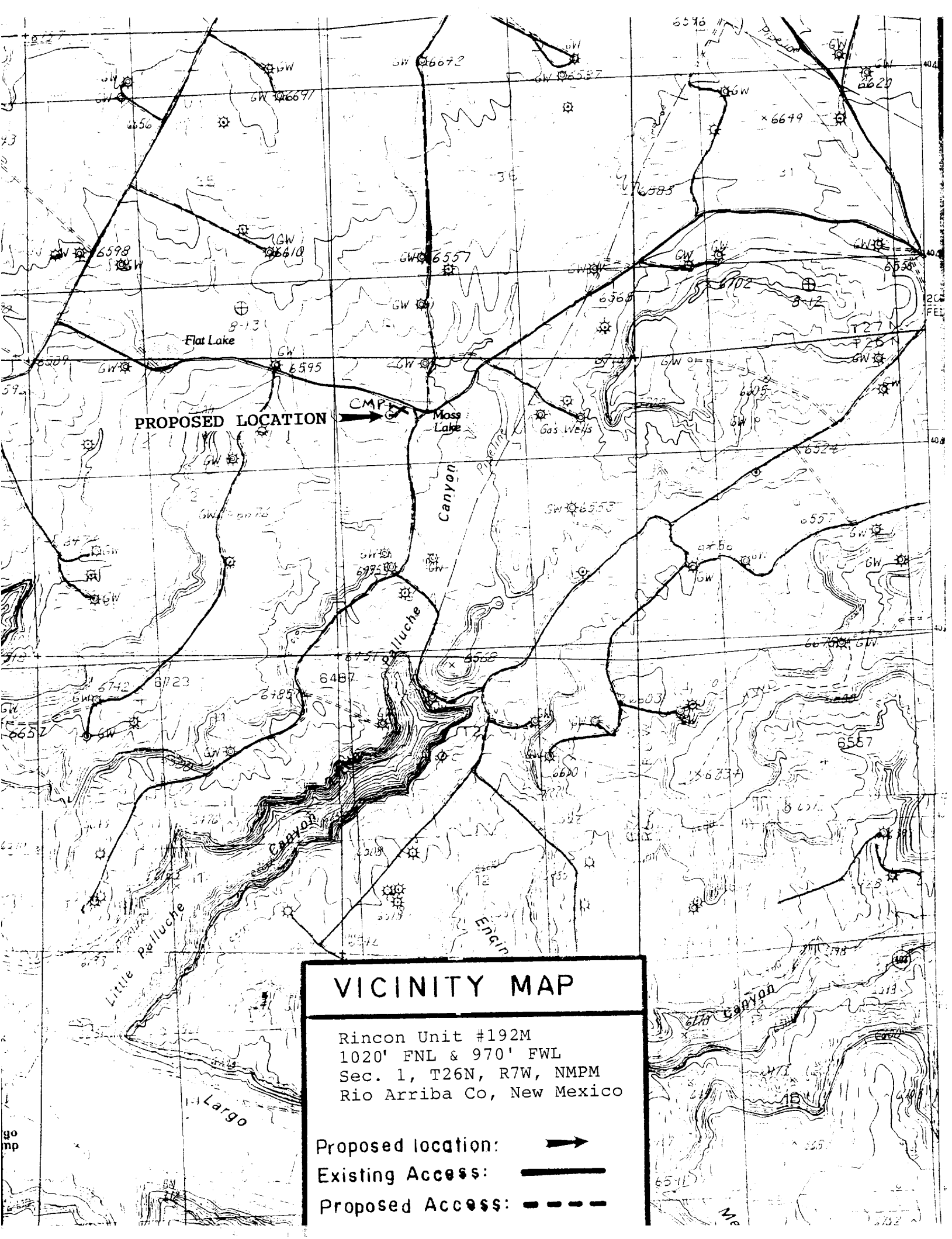
Signature
Bill Hering
Printed Name
Mr. Bill Hering
Position
District Petroleum Engr.
Company
UNOCAL
Date
03/18/91

SURVEYOR CERTIFICATION

I hereby certify that the well location shown on this plat was plotted from field notes of actual surveys made by me or under my supervision, and that the same is true and correct to the best of my knowledge and belief.

Date Surveyed
March 14, 1991
Signature
B. Tullis
Professional Surveyor
B. Tullis
Certificate No. **9872**

RECEIVED
OIL CONTROL DIV.
JUL 2 1967





PROPOSED LOCATION



VICINITY MAP

Rincon Unit #192M
1020' FNL & 970' FWL
Sec. 1, T26N, R7W, NMPM
Rio Arriba Co, New Mexico

- Proposed location: 
- Existing Access: 
- Proposed Access: 