

UNITED STATES
DEPARTMENT OF THE INTERIOR
BUREAU OF LAND MANAGEMENT

30-039-25347

APPLICATION FOR PERMIT TO DRILL, DEEPEN, OR PLUG BACK

1a. TYPE OF WORK

DRILL ☒

DEEPEN ☐

PLUG BACK ☐

b. TYPE OF WELL

OIL
WELL ☐

GAS
WELL ☒

OTHER

SINGLE
ZONE ☐

MULTIPLE
ZONE ☐

2. NAME OF OPERATOR

MW PETROLEUM CORPORATION 15422

3. ADDRESS OF OPERATOR

1700 Lincoln, Ste. 2000, Denver, CO 80203-4250

4. LOCATION OF WELL (Report location clearly and in accordance with any State requirements.)

At surface 1190' FNL, 1850' FWL (NENW)

At proposed prod. zone Same

14. DISTANCE IN MILES AND DIRECTION FROM NEAREST TOWN OR POST OFFICE*

Approximately 40 miles NE of Counselor, NM

15. DISTANCE FROM PROPOSED*

LOCATION TO NEAREST
PROPERTY OR LEASE LINE, FT. 1190'
(Also to nearest drlg. unit line, if any)

16. NO. OF ACRES IN LEASE

2566.44

17. NO. OF ACRES ASSIGNED

160'

18. DISTANCE FROM PROPOSED LOCATION*

TO NEAREST WELL, DRILLING, COMPLETED, 588'
OR APPLIED FOR, ON THIS LEASE, FT. from All8-14

19. PROPOSED DEPTH

4200'

20. ROTARY OR CABLE TOOLS

Rotary

21. ELEVATIONS (Show whether DF, RT, GR, etc.)

7458' GR

22. APPROX. DATE WORK WILL START*

As soon as permitted

23.

PROPOSED CASING AND CEMENTING PROGRAM

SIZE OF HOLE	SIZE OF CASING	WEIGHT PER FOOT	SETTING DEPTH	QUANTITY OF CEMENT
12 1/4"	8 5/8"	24#	250'	200 sxs
7 7/8"	4 1/2"	11.6#	4200'	725 sxs

MW Petroleum Corporation proposes to drill the subject well to test the Pictured Cliffs potential. A 12 1/4" hole will be drilled to 250' and 8 5/8", 24#, K-55 surface casing will be set with 200 sxs Class "G" cement. A 7 7/8" hole will be drilled out from under surface to a total depth of 4200'. If productive, 4 1/2", 11.6#, N-80 production casing will be set and cemented with 725 sxs Class "G". If unproductive, the well will be plugged and abandoned according to Bureau of Land Management regulations.

RECEIVED

DEC - 7 1993

OIL CON. DIST. 2

IN ABOVE SPACE DESCRIBE PROPOSED PROGRAM: If proposal is to deepen or plug back, give data on present productive zone and proposed new productive zone. If proposal is to drill or deepen directionally, give pertinent data on subsurface locations and measured and true vertical depths. Give blowout preventer program, if any.

24.

SIGNED

R. Chris Kersey

TITLE Sr. Drlg/Prod. Engineer

DATE 10/13/93

(This space for Federal or State office use)

PERMIT NO.

APPROVAL DATE

(Original Signed) HECTOR A. VILLALOBOS

AREA MANAGER

APPROVED BY

TITLE RIO PUERCO RESOURCE AREA

DATE DEC 6 1993

CONDITIONS OF APPROVAL, IF ANY:

*See Instructions On Reverse Side

OIL CONSERVATION DIVISION

P.O. Box 2088
Santa Fe, New Mexico 87504-2088

DISTRICT I
P.O. Box 1980, Hobbs, NM 88240

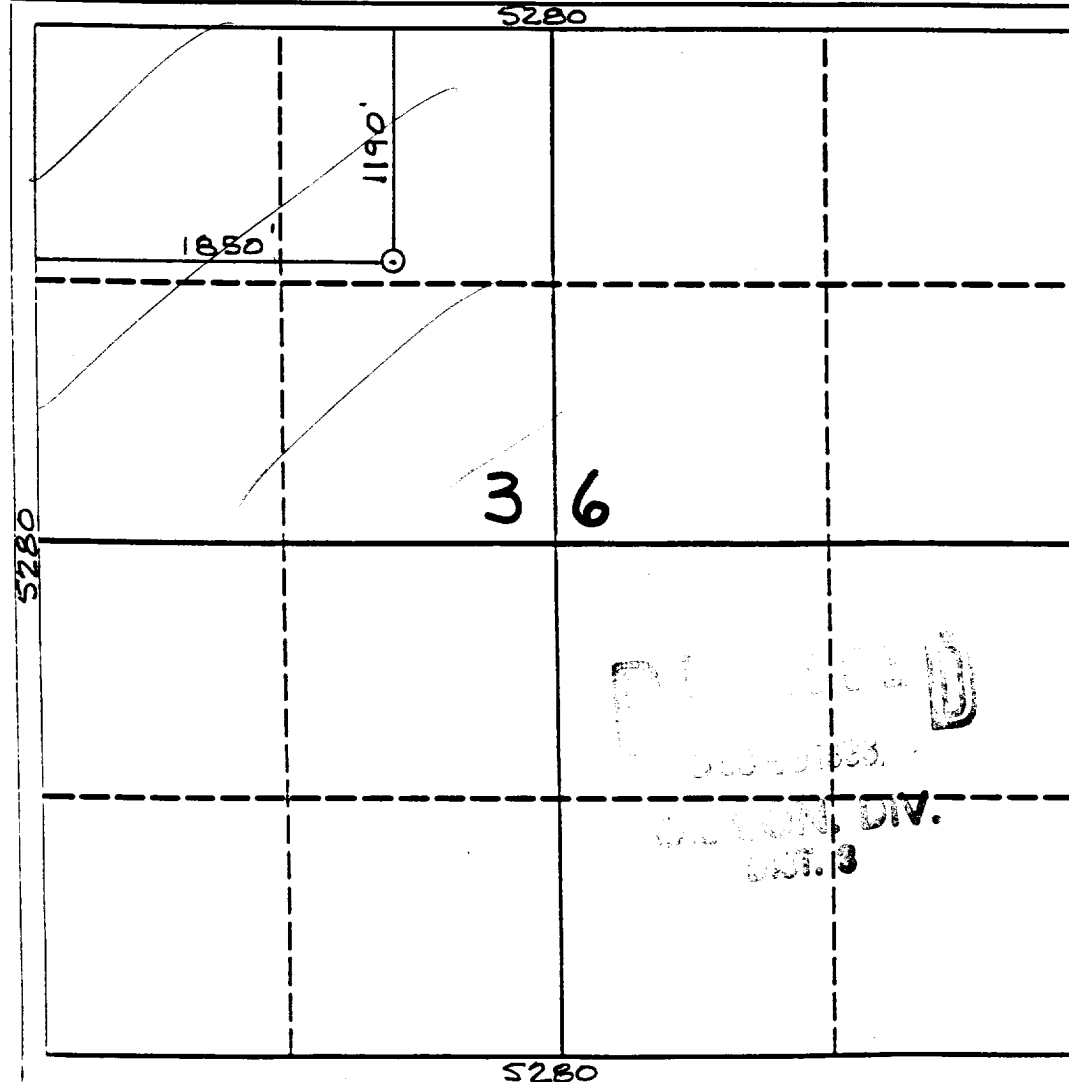
DISTRICT II
P.O. Drawer DD, Arama, NM 88210

DISTRICT III
1000 Rio Brazos Rd., Aztec, NM 87410

WELL LOCATION AND ACREAGE DEDICATION PLAT

All Distances must be from the outer boundaries of the section

Operator MW Petroleum Corp.		Lease Jicarilla Apache A118		Well No. 25
Unit Letter C	Section 36	Township 26 North	Range 3 West	County NMNM Rio Arriba
Actual Footage Location of Well: 1190 feet from the North line and 1850 feet from the West line				
Ground level Elev. 7458	Producing Formation Pictured Cliff	Pool Tapacito PC EXT	Dedicated Acreage: Acres	
<p>1. Outline the acreage dedicated to the subject well by colored pencil or inkline marks on the plat below.</p> <p>2. If more than one lease is dedicated to the well, outline each and identify the ownership thereof (both as to working interest and royalty).</p> <p>3. If more than one lease of different ownership is dedicated to the well, have the interest of all owners been consolidated by communitization, unitization, force-pooling, etc.? <input type="checkbox"/> Yes <input type="checkbox"/> No If answer is "yes" type of consolidation _____</p> <p>If answer is "no" list the owners and tract descriptions which have actually been consolidated. (Use reverse side of this form if necessary.) _____</p> <p>No allowable will be assigned to the well until all interests have been consolidated (by communitization, unitization, forced-pooling, or otherwise) or until a non-standard unit, eliminating such interest, has been approved by the Division.</p>				



OPERATOR CERTIFICATION

I hereby certify that the information contained herein is true and complete to the best of my knowledge and belief.

Signature

Printed Name

Mark McCool

Position

Production Superintendent
Farmington District

Company

Date

MW Petroleum Corp.
10/12/93

SURVEYOR CERTIFICATION

I hereby certify that the well location shown on this plat was plotted from field notes of actual surveys made by me or under my supervision, and that the same is true and correct to the best of my knowledge and belief.

Date Surveyed

Signature of Surveyor

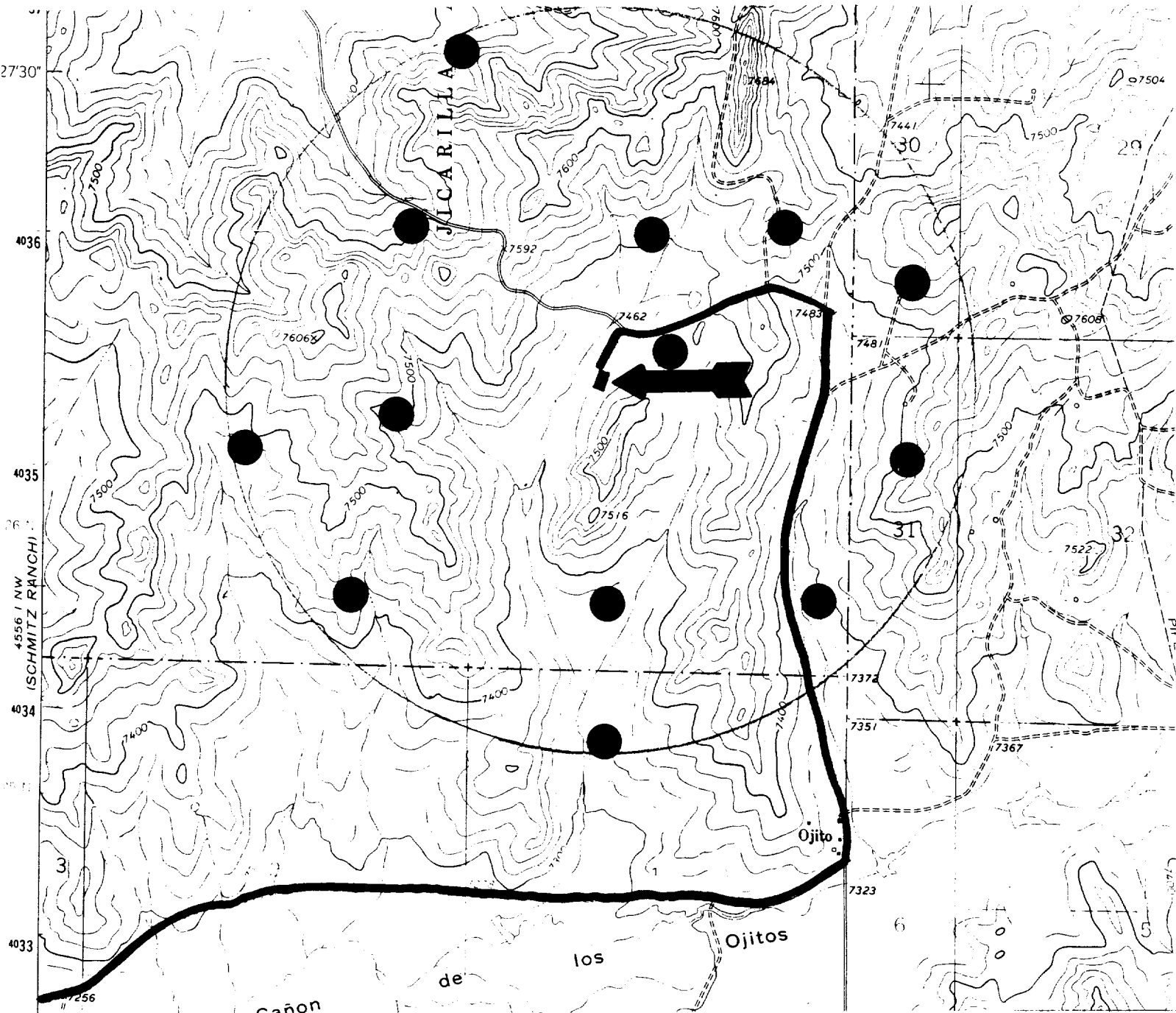
Professional Surveyor

6857


Certificate No.

6857

MW Petroleum Corporation
Jicarilla Apache A118 #25
1190' FNL & 1850' FWL
Sec. 36, T. 26 N., R. 3 W.
Rio Arriba County, NM



Proposed Well: 

Existing Well: 

Access Route: 