

STATE OF NEW MEXICO
ENERGY, MINERALS AND NATURAL RESOURCES DEPARTMENT
OIL CONSERVATION DIVISION



BRUCE KING
DIRECTOR
ANTHONY WOOD
DEPUTY SECRETARY

April 20, 1994

POST OFFICE BOX 1000
STATE LAND OFFICE BUILDING
SANTA FE, NEW MEXICO 87501
BUSINESS MAIL

Meridian Oil, Inc.
P.O. Box 4289
Farmington, NM 87499

Attention: Peggy Bradfield

Administrative Order NSL-3377

Dear Ms. Bradfield:

Reference is made to your application dated March 14, 1994, for a non-standard gas well location for your Canyon Largo Unit Well No. 431 to be drilled 1475 feet from the North line and 1340 feet from the East line (Unit G) of Section 14, Township 25 North, Range 7 West, NMPM, Basin-Dakota Pool, Rio Arriba County, New Mexico. The E/2 of said Section 14 shall be dedicated to the well forming a standard 320-acre gas spacing and proration unit for said pool.

By the authority granted me under the provisions of Rule 2(c) of the Special Rules and Regulations for the Basin-Dakota Pool as promulgated by Division Order No. R-8170, as amended, the above-described unorthodox gas well location is hereby approved.

Sincerely,

A handwritten signature in black ink, appearing to read "William J. LeMay".

William J. LeMay
Director

WJL/MES/amg

cc: Oil Conservation Division - Aztec
US Bureau of Land Management - Farmington

RECEIVED
MAY - 2 1994
OIL CON. DIV.
DIST. 3

RPD IN
4-27-94

Ernie Busch

From: Ernie Busch
To: Mike Stogner
Subject: MERIDIAN OIL INC. (NSL)
Date: Thursday, April 07, 1994 1:37PM
Priority: High

WELL NAME: CANYON LARGO UNIT #431
LOCATION: G-14-25N-07W
FOOTAGE: 1475' FNL; 1340' FEL
RECOMMEND: APPROVAL

1475 - 1340

CMD : 066E101 ONGARD 03/26/94 12:04:49

101-APPLICATION FOR PERMIT TO DRILL OGOMEV-EMB4

OGRID IDN : 778 API Well No: 30 45 25896 APD Status(A/C/P): A
Opr Name, Addr : AMOCO PRODUCTION CO

PO BOX 21178
Aprvl/Cncl Date : 02-16-1984

Prop IDn: 1059 STAHLY GAS COM A Well No: 001

U/L Sec	Township	Range	Lot	Idn	North/South	East/West
29	29N	10W			FTG 1070 F N	FTG 1550 F W

Surface Locn : C 29 29N 10W
OCD U/L : C API County : 45

Work typ(N/E/D/P/A) : N Well typ(O/G/M/I/S/W/C) : G Cable/Rotary (C/R) : R
Lease typ(F/S/P/N/J/U/I) : P Ground Level Elevation : 5511

State Lease No: Multiple Comp (Y/N) : N
Prpsd Depth : 2920 Prpsd Frmtn : OTERO CHACRA

M0015:Table update is successful.
PF01 HELP PF02 PF03 EXIT PF04 GoTo PF05 PF06 CONFIRM
PF07 PF08 PF09 COMMENT PF10 C102 PF11 HISTORY PF12

MERIDIAN OIL

March 14, 1994

Sent Federal Express

Mr. William LeMay
New Mexico Oil Conservation Division
Post Office Box 2088
Santa Fe, New Mexico 87501

Re: Meridian Oil Inc. Canyon Largo Unit #431
1475'FNL, 1340'FEL, Section 14, T-25-N, R-7-W - Rio Arriba County, New Mexico
API # 30-039-(not assigned)

Dear Mr. LeMay:

Meridian Oil Inc. is applying for administrative approval of a non-standard location for the above location in the Basin Dakota formation. This application for the referenced location is due to terrain as shown on the topographic map, archaeology, and the presence of pipelines.

The following attachments are for your review:

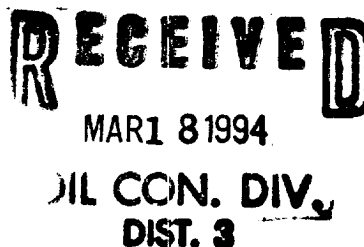
1. Application for Permit to Drill.
2. Completed C-102 at referenced location.
3. Offset operators/owners plat
4. 7.5 minute topographic map showing the orthodox windows for the East half dedication for the Dakota; and enlargement of the map to define topographic features.
5. If the well were directionally drilled to a standard bottom hole location, the economics would be severely burdened due to the incremental directional drilling costs of \$140,000.

Meridian Oil Inc. is operator of the Canyon Largo Unit and is the offsetting operator for this section.

Sincerely,



Peggy Bradfield
Regulatory/Compliance Representative

encs.



UNITED STATES
DEPARTMENT OF THE INTERIOR
BUREAU OF LAND MANAGEMENT

APPLICATION FOR PERMIT TO DRILL, DEEPEN, OR PLUG BACK

1a. Type of Work DRILL	5. Lease Number SF-078880
1b. Type of Well GAS	6. If Indian, All. or Tribe
2. Operator MERIDIAN OIL	7. Unit Agreement Name Canyon Largo Unit
3. Address & Phone No. of Operator PO Box 4289, Farmington, NM 87499 (505) 326-9700	8. Farm or Lease Name Canyon Largo Unit 9. Well Number 431
4. Location of Well 1475' FNL, 1340' FEL Latitude 36° 24' 11", Longitude 107° 32' 20"	10. Field, Pool, Wildcat Basin Dakota 11. Sec., Twn, Rge, Mer. Sec 14, T-25-N, R-7-W NMPM
14. Distance in Miles from Nearest Town 16 miles to Counselors	12. County Rio Arriba
	13. State NM
15. Distance from Proposed Location to Nearest Property or Lease Line 1340'	
16. Acres in Lease	17. Acres Assigned to Well 320 E/2
18. Distance from Proposed Location to Nearest Well, Drlg, Compl, or Applied for on this Lease 300'	
19. Proposed Depth 6960'	20. Rotary or Cable Tools Rotary
21. Elevations (DF, FT, GR, Etc.) 6445'	22. Approx. Date Work will Start 2nd quarter 1994
<div style="border: 1px solid black; padding: 5px; display: inline-block;">RECEIVED MAR 18 1994 OIL CON. DIV. DIST. 3</div>	
23. Proposed Casing and Cementing Program See Operations Plan attached	
24. Authorized by:  Regional Drilling Engineer	Date <u>3/10/94</u>

PERMIT NO. _____ APPROVAL DATE _____

APPROVED BY _____ TITLE _____ DATE _____

Archaeological Report submitted by Arboles Contract Arch. Tech Rep #375 dated 12-18-93
Threatened and Endangered Species Report to be submitted
NOTE: This format is issued in lieu of U.S. BLM Form 3160-3

OPERATIONS PLAN

Well Name: Canyon Largo Unit #431
Location: 1475'FNL, 1340'FEL Section 14, T-25-N, R-7-W
 Rio Arriba County, New Mexico
 Latitude 36° 24' 11", Longitude 107° 32' 20"
Formation: Basin Dakota
Elevation: 6445'GL

<u>Formation Tops:</u>	<u>Top</u>	<u>Bottom</u>	<u>Contents</u>
Surface	San Jose	1610'	
Ojo Alamo	1610'	1740'	aquifer
Kirtland	1740'	2240'	
Fruitland	2240'	2350'	gas
Pictured Cliffs	2350'	2410'	gas
Lewis	2410'	3140'	
Chacra	3140'	3840'	salt water
Cliff House	3840'	3930'	salt water
Menefee	3930'	4560'	
Point Lookout	4560'	4780'	
Mancos	4780'	5650'	
Gallup	5650'	6190'	gas & oil
Juana Lopez	6190'	6500'	
Greenhorn	6500'	6570'	gas & oil
Graneros	6570'	6605'	
Dakota	6605'	6825'	gas & oil
Burro Canyon	6825'	6910'	
Morrison	6910'		salt water
Total Depth	6960'		

Logging Program:

Mud Logs/Coring/DST -
 Mud logs - 1600'--TD.
 Coring - none
 DST - none
 Electric logs - IEL/SP/GR; Density/Neut/GR; Microlog-GR; Numar;
 Dig.Sonic

Mud Program:

<u>Interval</u>	<u>Type</u>	<u>Weight</u>	<u>Vis.</u>	<u>Fluid Loss</u>
0- 200'	Spud	8.4-8.9	40-50	no control
200-6960'	LSND	8.4-9.1	30-60	no control

Pit levels will be visually monitored to detect gain or loss of fluid control.

Casing Program:

<u>Hole Size</u>	<u>Depth Interval</u>	<u>Csg.Size</u>	<u>Wt.</u>	<u>Grade</u>
12 1/4"	0' - 200'	8 5/8"	24.0#	K-55
7 7/8"	0' - 6960'	5 1/2"	17.0#	K-55

Tubing Program:

0' - 6960' 2 3/8" 4.7# J-55 EUE

BOP Specifications, Wellhead and Tests:

Surface to TD -

11" 3000 psi minimum double gate BOP stack (Reference Figure #1).
After nipple-up prior to drilling out surface casing, rams and casing will be tested to 600 psi for 30 minutes.

2" nominal, 3000 psi minimum choke manifold (Reference Figure #3).

Completion Operations -

6" 3000 psi double gate BOP stack (Reference Figure #2).
After nipple-up prior to completion, pipe rams and casing top will be tested to 3000 psi for 15 minutes.

Surface to Total Depth -

2" nominal, 3000 psi minimum choke manifold (Reference Figure #3).

Wellhead -

8 5/8" x 5 1/2" x 2 3/8" x 3000 psi tree assembly.

General -

- Pipe rams will be actuated once each day and blind rams will be actuated once each trip to test proper functioning.
- An upper kelly cock valve with handle available and drill string valves to fit each drill string will be available on the rig floors at all times.
- A BOP pit level drill will be conducted weekly for each drilling crew.
- All of the BOP tests and drills will be recorded in the daily drilling reports.
- Blind and pipe rams will be equipped with extension hand wheels.

Cementing:

8 5/8" surface casing -

Cement to surface w/140 sx Class "B" cement w/3% calcium chloride and 1/4#/sx cellophane flakes (165 cu.ft. of slurry, 100% excess to circulate to surface.) WOC 12 hours prior to drilling out surface casing. Test casing to 600 psi for 30 minutes.

Saw tooth guide shoe on bottom. Bowspring centralizers will be run in accordance with Onshore Order #2.

Production Casing - 5 1/2"

First Stage: Cement to circulate to stage tool @ 4780'. Lead w/354 sx 65/35 Class "B" Pozmix w/6% gel, 2% calcium chloride, and 1/4#/sx cellophane flakes. Tail w/100 sx Class "B" cement w/2% calcium chloride. WOC 4 hours prior to pumping second stage. (Slurry volume: 755 cu.ft. Excess slurry 100%.)

Second Stage: Cement to circulate to stage tool @ 2140'. Lead w/450 sx 65/35 Class "B" Pozmix w/6% gel, 2% calcium chloride, and 1/4#/sx cellophane flakes. Tail w/100 sx Class "B" cement w/2% calcium chloride. WOC a minimum of 18 hours prior to cleanout. (Slurry volume: 915 cu.ft. Excess slurry: 100%.)

Third Stage: Cement to circulate to surface. Cement w/346 sx 65/35 Class "B" Pozmix w/6% gel, 2% calcium chloride, and 1/4#/sx cellophane flakes. Tail w/100 sx Class "B" cement w/2% calcium chloride. WOC a minimum of 18 hours prior to cleanout. (Slurry volume: 742 cu.ft. Excess slurry: 100%.)

Float shoe on bottom. Three centralizers run every other joint above shoe. Thirty-three centralizers - one every 4th joint to the base of the Ojo Alamo @ 1740'. Two turbolizing type centralizers - one below and one into the base of the Ojo Alamo @ 1740'. Standard centralizers thereafter every fourth joint up to the base of the surface pipe.

- If hole conditions permit, an adequate water spacer will be pumped ahead of each cement job to prevent cement/ mud contamination or cement hydration.
- The pipe will be rotated and/or reciprocated, if hole conditions permit.

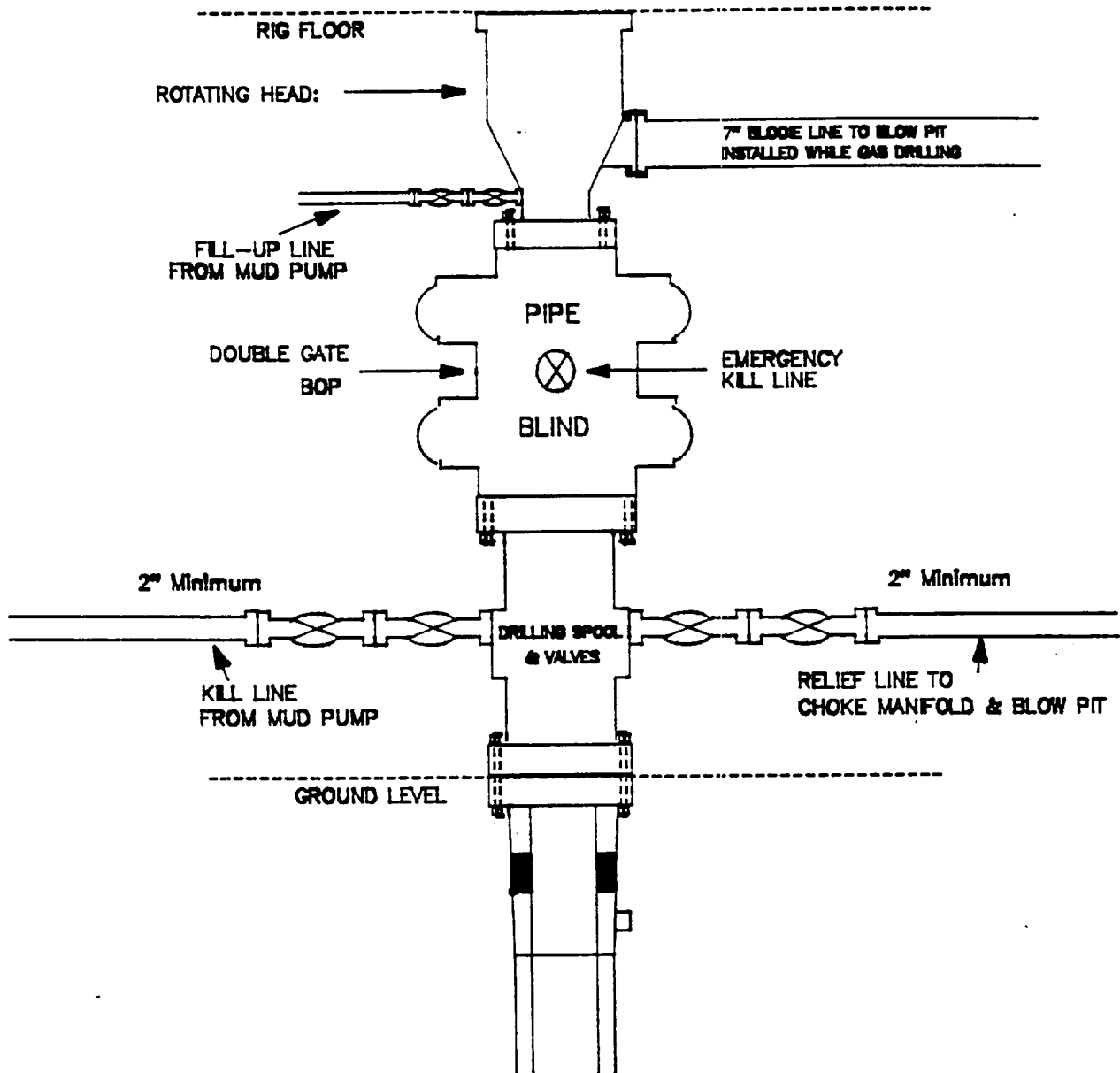
Additional Information:

- The Dakota formation will be completed.
- No abnormal temperatures or hazards are anticipated.
- Sufficient LCM will be added to the mud system to maintain well control, if lost circulation is encountered below the top of the Pictured Cliffs.
- The east half of Section 14 is dedicated to this well.
- This gas is dedicated.
- New casing will be utilized.
- Pipe movement (either rotation or reciprocation) will be done if hole conditions permit.

MERIDIAN OIL INC.

BOP Configuration

2M psi SYSTEM



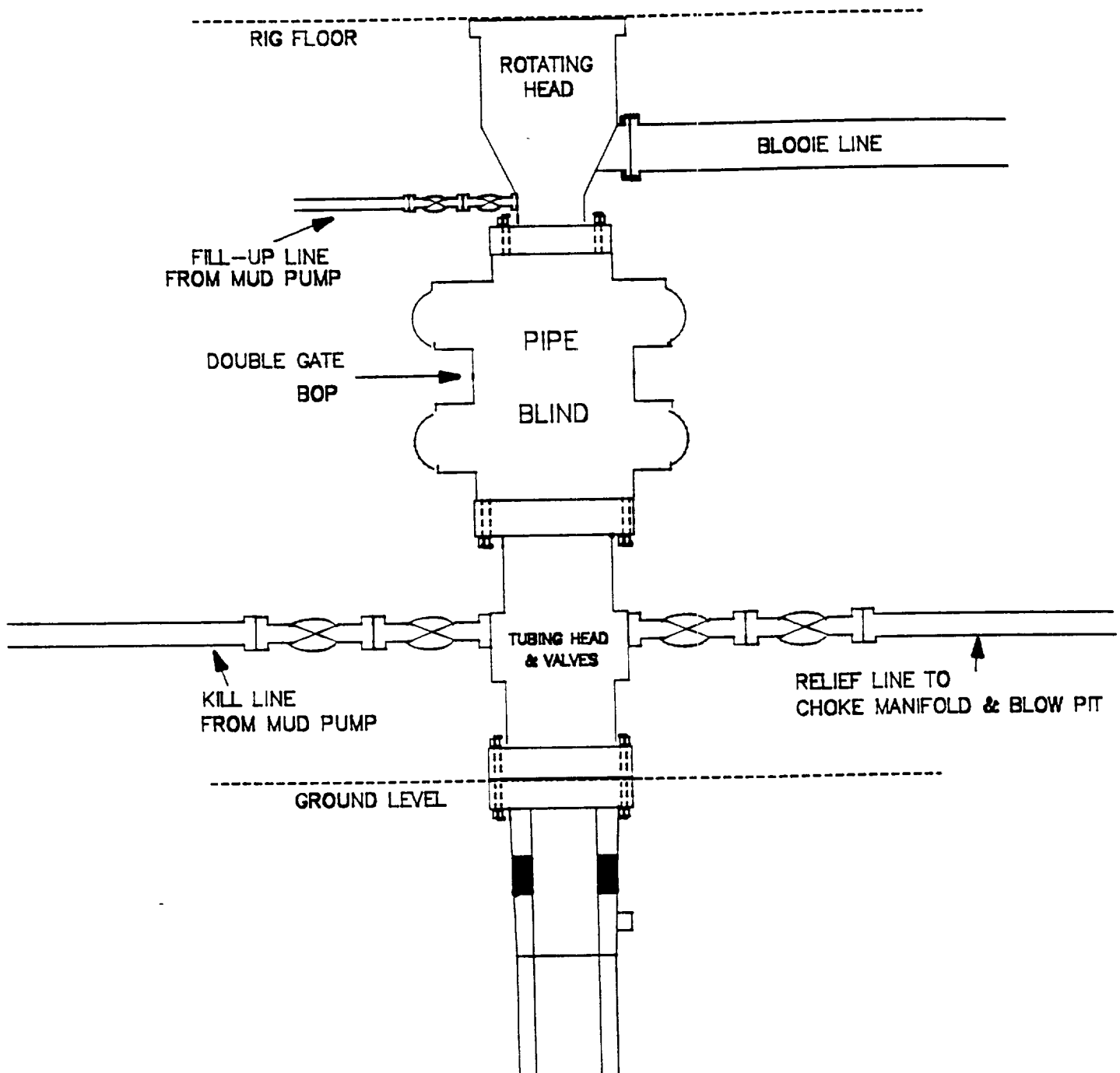
11" Bore, 2000psi minimum working pressure double gate BOP to be equipped with blind and pipe rams. A Schaffer Type 50 or equivalent rotating head to be installed on the top of the BOP. All equipment is 2000psi working pressure/or greater.

Figure #1

MERIDIAN OIL INC.

BOP Configuration

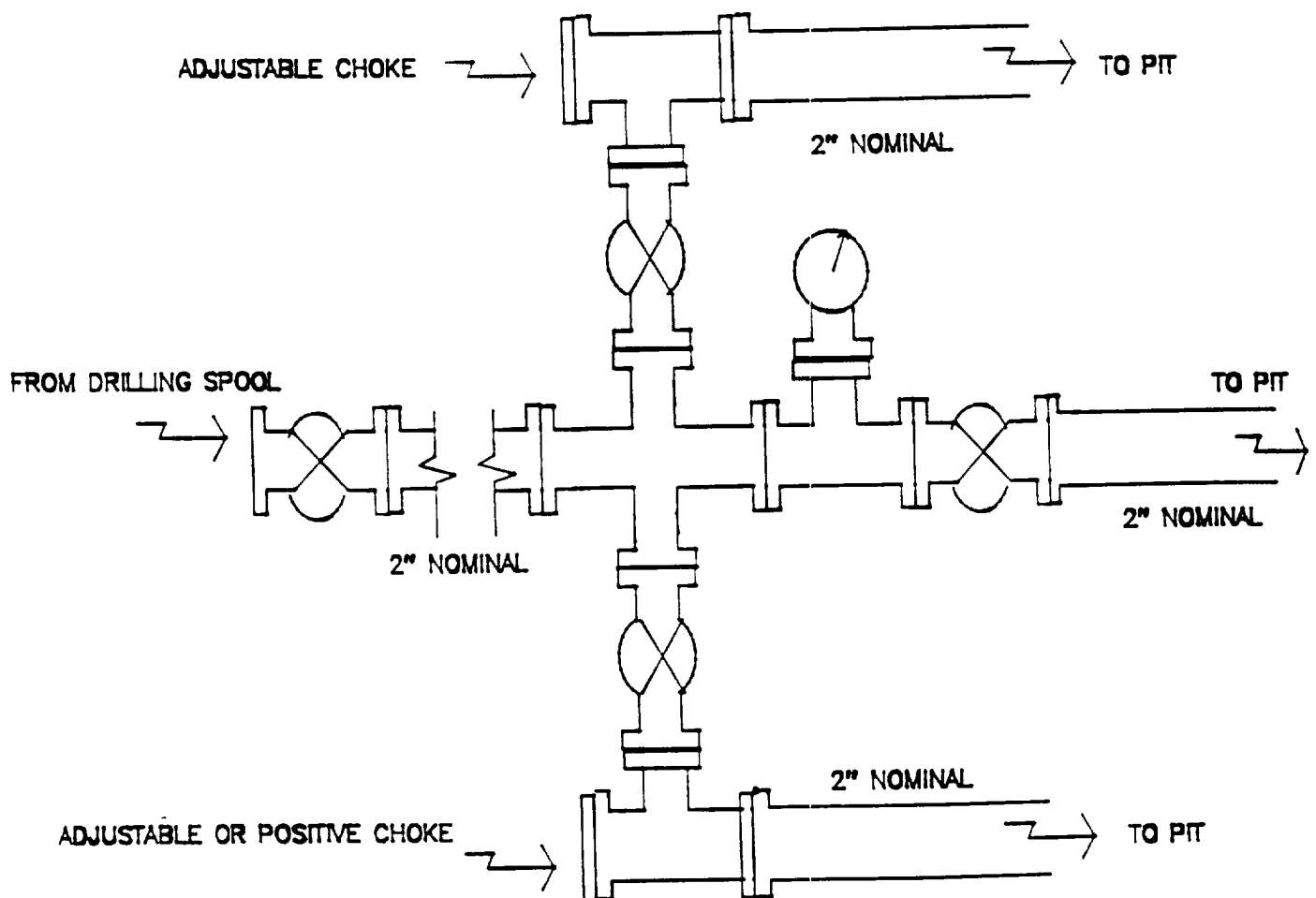
2M psi SYSTEM



Minimum BOP installation for Completion operations. 7 1/16" Bore (6" Nominal), 3000psi minimum working pressure double gate BOP to be equipped with blind and pipe rams.

Figure #2

MERIDIAN OIL INC.
Choke Manifold Configuration
2M psi SYSTEM



Minimum choke manifold installation from surface to Total Depth.
2" minimum, 2000psi working pressure equipment with two chokes.

Figure #3

MERIDIAN OIL
Canyon Largo Unit #431
Multi-Point Surface Use Plan

1. Existing Roads - Refer to Map No. 1. Existing roads used to access the proposed location will be properly maintained for the duration of the project. Bureau of Land Management right-of-way has been applied for as shown on Map No. 1.
2. Planned Access Road - Refer to Map No. 1. None required.
3. Location of Existing Wells - Refer to Map No. 1A.
4. Location of Existing and/or Proposed Facilities if Well is Productive -
 - a. On the Well Pad - Refer to Plat No. 1, anticipated production facilities plat.
 - b. Off the Well Pad - Anticipated facilities off the well pad will be applied for as required.
5. Location and Type of Water Supply - Water will be hauled by truck for the proposed project and will be obtained from Superior Water Hole #1 located NW Section 4, T-25-N, R-6-W, New Mexico.
6. Source of Construction Materials - If construction materials are required for the proposed project, such materials will be obtained from a commercial quarry.
7. Methods of Handling Waste Materials - All garbage and trash materials will be removed from the site for proper disposal. A portable toilet will be provided for human waste and serviced in a proper manner. If liquids are left in the reserve pit after completion of the project, the pit will be fenced until the liquids have had adequate time to dry. The location clean-up will not take place until such time as the reserve pit can be properly covered over to prevent run-off from carrying waste materials into the watershed. All reserve pits will be lined with 12 mil bio-degradable plastic liner. All earthen pits will be so constructed as to prevent leakage from occurring; no earthen pit will be located on natural drainage. Generation of hazardous waste is not anticipated. Federal regulations will be adhered to regarding handling and disposal of such waste if so generated.
8. Ancillary Facilities - None anticipated.
9. Wellsite Layout - Refer to the location diagram and to the wellsite cut and fill diagram (Figure No. 4). The blow pit will be constructed with a 2'/160' grade to allow positive drainage to the reserve pit and prevent standing liquids in the blow pit.

10. Plans for Restoration of the Surface - After completion of the proposed project, the location will be cleaned and leveled. The location will be left in such a condition that will enable reseeding operations to be carried out. Seed mixture as designated by the responsible government agency will be used. The reseeding operations will be performed during the time period set forth by the responsible government agency. The permanent location facilities will be painted as designated by the responsible government agency.
11. Surface Ownership - Bureau of Land Management.
12. Other Information - Environmental stipulations as outlined by the responsible government agency will be adhered to. Refer to the archaeological report for a description of the topography, flora, fauna, soil characteristics, dwellings, historical and cultural sites.
13. Operator's Representative and Certification - Meridian Oil Regional Drilling Manager, Post Office Box 4289, Farmington, NM 87499, telephone (505) 326-9700. I hereby certify that I, or persons under my direct supervision, have inspected the proposed drill site and access route; that I am familiar with the conditions which presently exist; that the statements made in this plan, are to the best of my knowledge, true and correct; and that the work associated with the operations proposed herein will be performed by Meridian Oil Inc. and its contractors and subcontractors in conformity with this plan and the terms and conditions under which it is approved.



Regional Drilling Engineer

3/9/94
Date

JWC:pb

STATE
LANDS

NEW BLM
ROW

NEW BLM
ROW

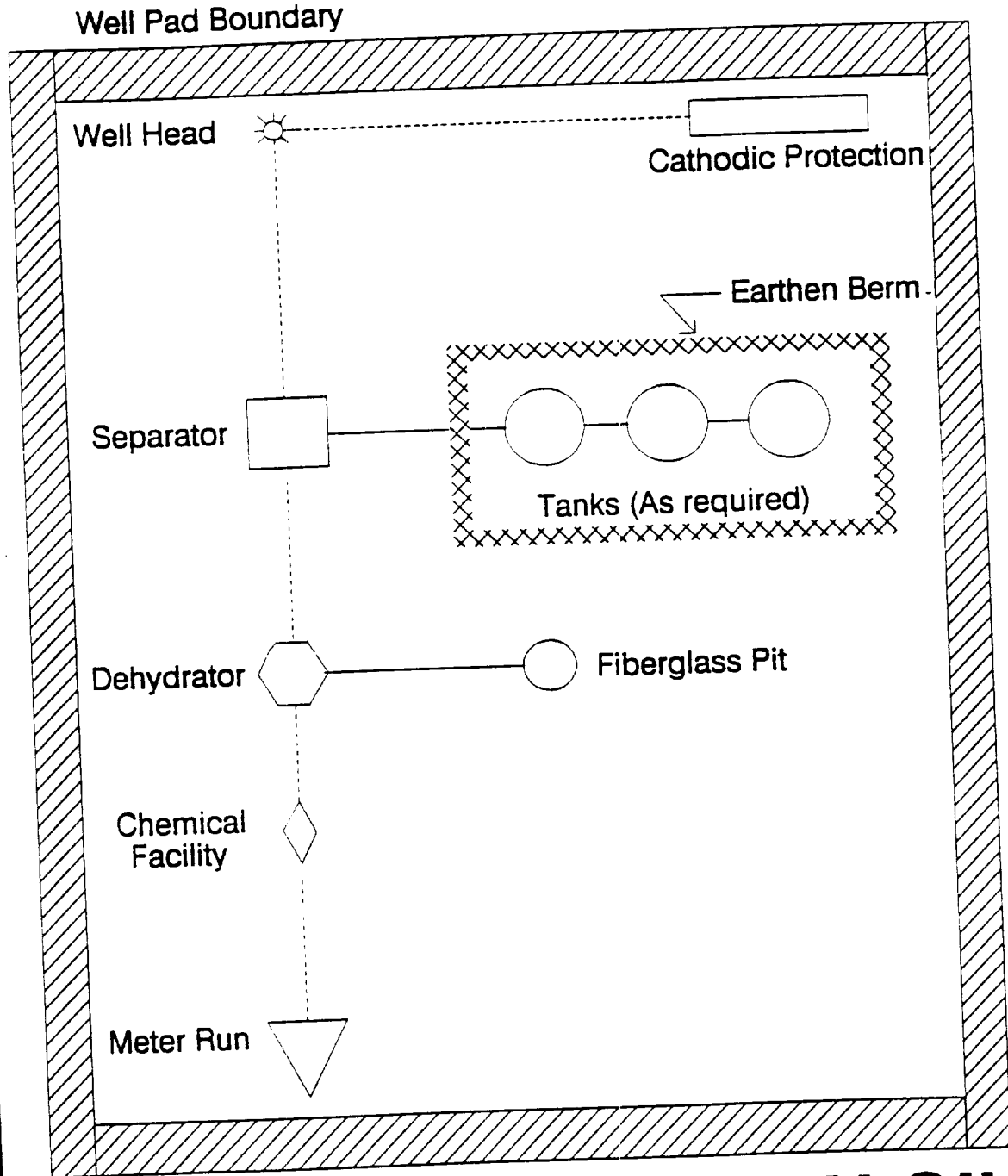
**MERIDIAN OIL INC
CANYON LARGO UNIT #431**

T 25 N, R 07 W
No New Construction

Section 14: N2NE	1800'
11: E2W2	6200'
1: N2NW	2600'

Remaining BLM Roads are covered by
existing ROW's NM 86617 & NM 71308.

APD MAP #1



PLAT #1

MERIDIAN OIL
ANTICIPATED
PRODUCTION FACILITIES
FOR A
DAKOTA WELL

MERIDIAN OIL

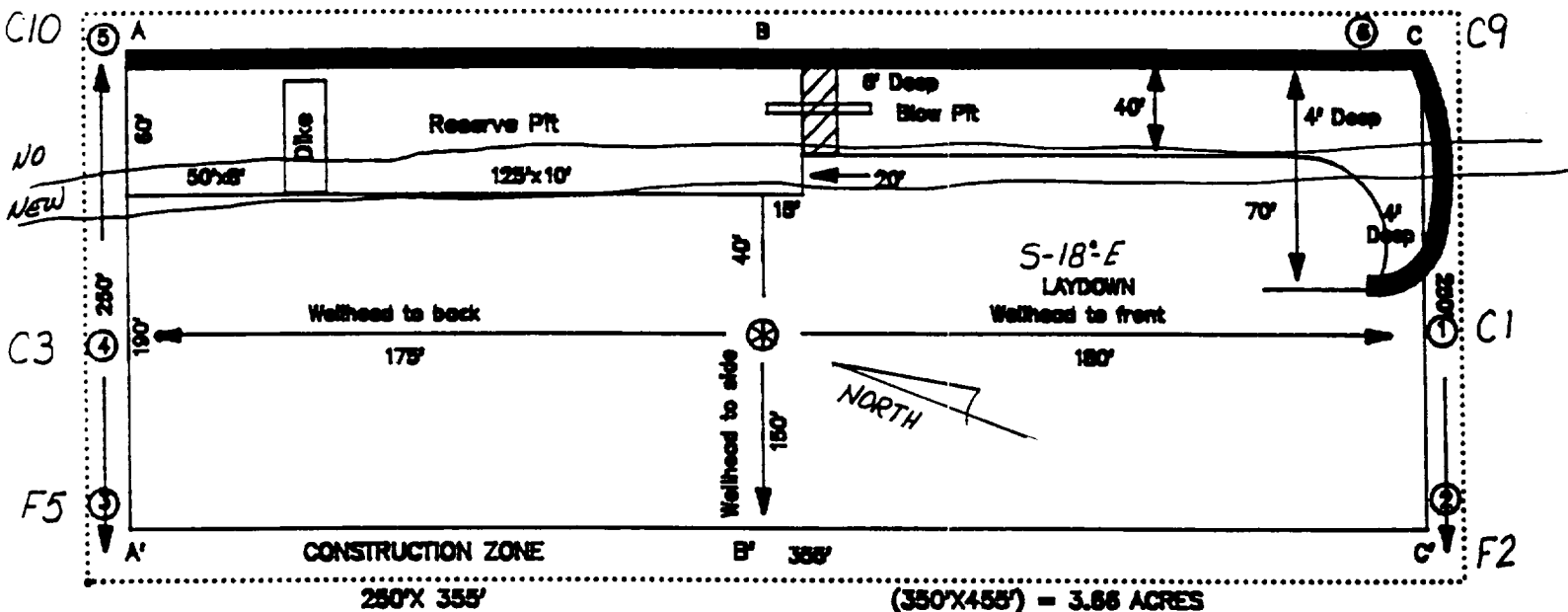
PLAT #2

FC HIGH POTENTIAL

ALL MV

ALL DK

NAME: MOI Canyon Largo Unit #431
 FOOTAGE: 1475' ENL., 1340' FEL.
 SEC 14 TWN 25 N.R. 7 W NMPM
 CO: Rio Arriba ST: NM
 ELEVATION: 6445' DATE: 10-1-93

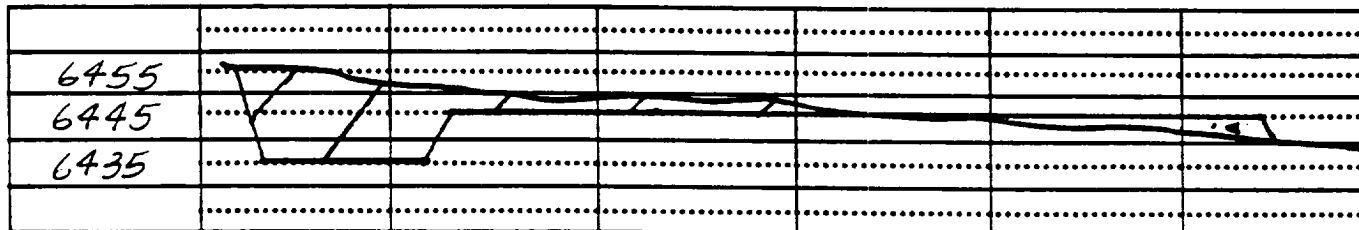


Reserve Pit Dike : to be 6' above Deep side; (overflow - 3' wide and 1' above shallow side.)

Blow Pit : overflow pipe halfway between top and bottom and extend over plastic liner and into blow pit.

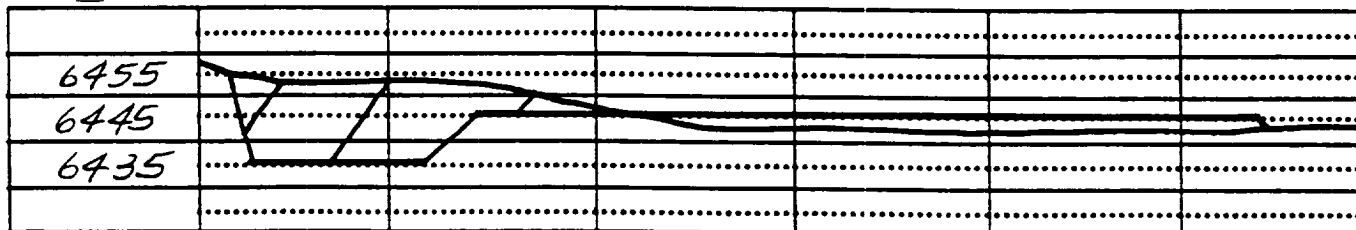
A-A'

C/L



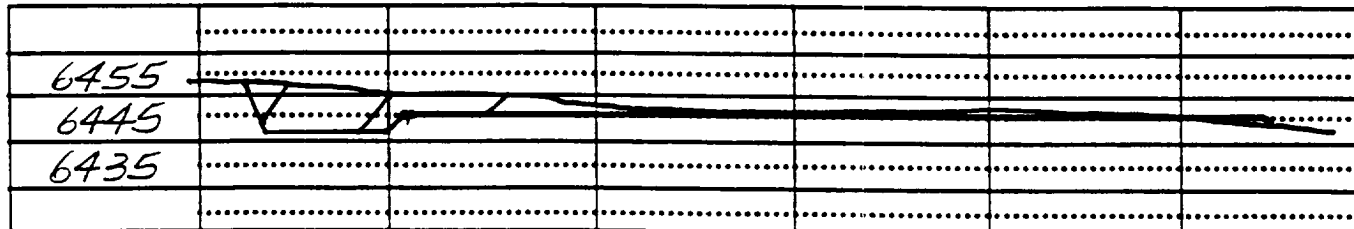
B-B'

C/L



C-C'

C/L



Submit to Asst. Secretary
District Office
State Lease - 4 copies
Fee Lease - 3 copies

State of New Mexico
Energy, Minerals and Natural Resources Department

Form C-182
Revised 1-1-89

OIL CONSERVATION DIVISION

P.O. Box 2088

Santa Fe, New Mexico 87504-2088

DISTRICT I
P.O. Box 1980, Hobbs, NM 88240

DISTRICT II
P.O. Drawer DD, Arama, NM 88210

DISTRICT III
1000 Rio Arriba Rd., Aztec, NM 87410

WELL LOCATION AND ACREAGE DEDICATION PLAT

All Distances must be from the outer boundaries of the section

Operator Meridian Oil Inc.		Lease Canyon Largo Unit		Well No. 431	
Unit Letter G	Section 14	Township 25 North	Range 7 West	County Rio Arriba	
Actual Footage Location of Well: 1475 feet from the North line and 1340 feet from the East line					
Ground level Elev. 6445'	Producing Formation Dakota	Pool Basin	Dedicated Acreage 320 Acres		
<p>1. Outline the acreage dedicated to the subject well by correct pencil or ink line marks on the plat below.</p> <p>2. If more than one lease is dedicated to the well, outline each and identify the ownership thereof (both as to working interest and royalty).</p> <p>3. If more than one lease of different ownership is dedicated to the well, have the names of all owners been consolidated by communitization, unitization, force-pooling, etc.? <input checked="" type="checkbox"/> Yes <input type="checkbox"/> No If answer is "yes" type of consolidation <u>unitization</u></p> <p>If answer is "no" list the owners and tract descriptions which have actually been consolidated. (Use reverse side of this form if necessary.)</p> <p>No allowable will be assigned to the well until all interests have been consolidated (by communitization, unitization, force-pooling, or otherwise) or until a non-standard unit, eliminating such interest, has been approved by the Division.</p>					

5194.20

OPERATOR CERTIFICATION

I hereby certify that the information contained herein is true and complete to the best of my knowledge and belief.

Peggy Bradfield
Signature

Peggy Bradfield

Printed Name

Regulatory Representative

Position

Meridian Oil Inc.

Company

3-8-94

Date

SURVEYOR CERTIFICATION

I hereby certify that the well location shown on this plat was plotted from field notes of actual surveys made by me or under my supervision, and that the same is true and correct to the best of my knowledge and belief. 10-1-93

NEEDLE C. EDWARDS
Signature of State Professional Surveyor

Professional Surveyor

9857

Carroll County, Mo.

6857

RECEIVED

MAR 18 1994

OIL CON. DIV.
DIST. 3

USA SF-078880

14

5207.40

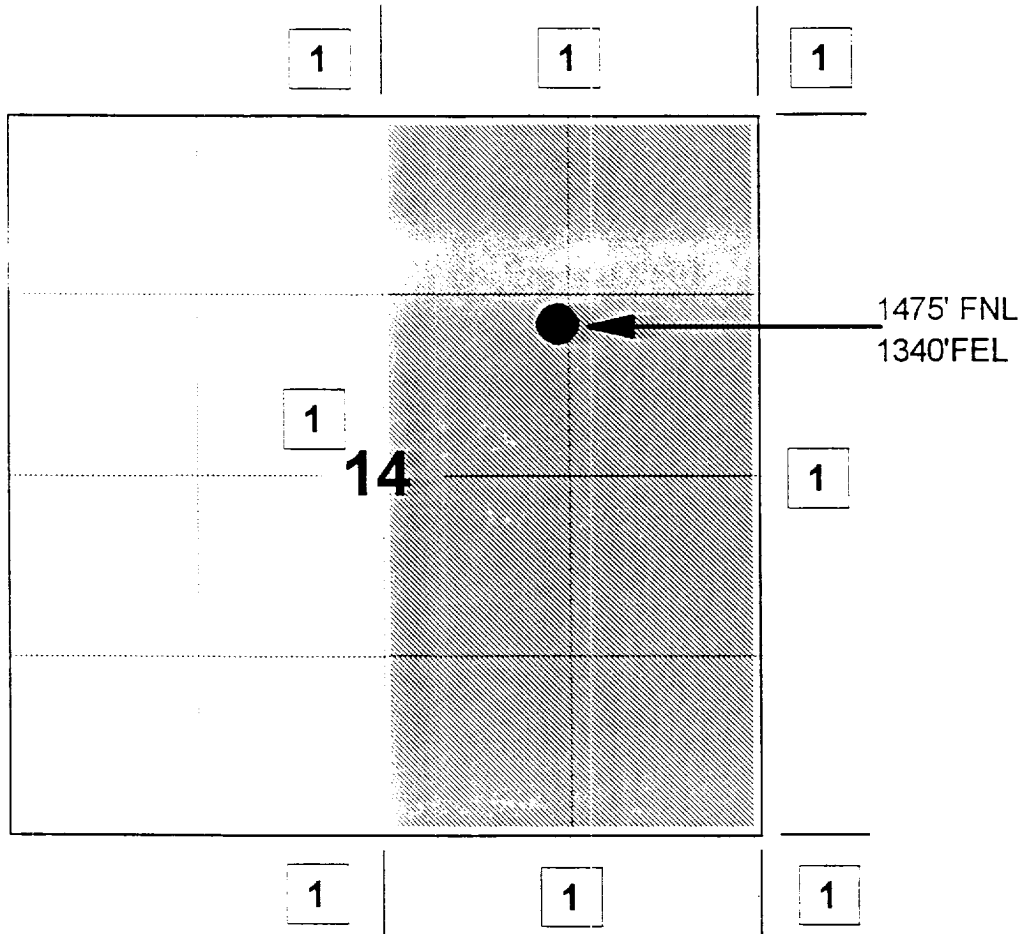
MERIDIAN OIL INC

CANYON LARGO UNIT #431

OFFSET OPERATOR \ OWNER PLAT

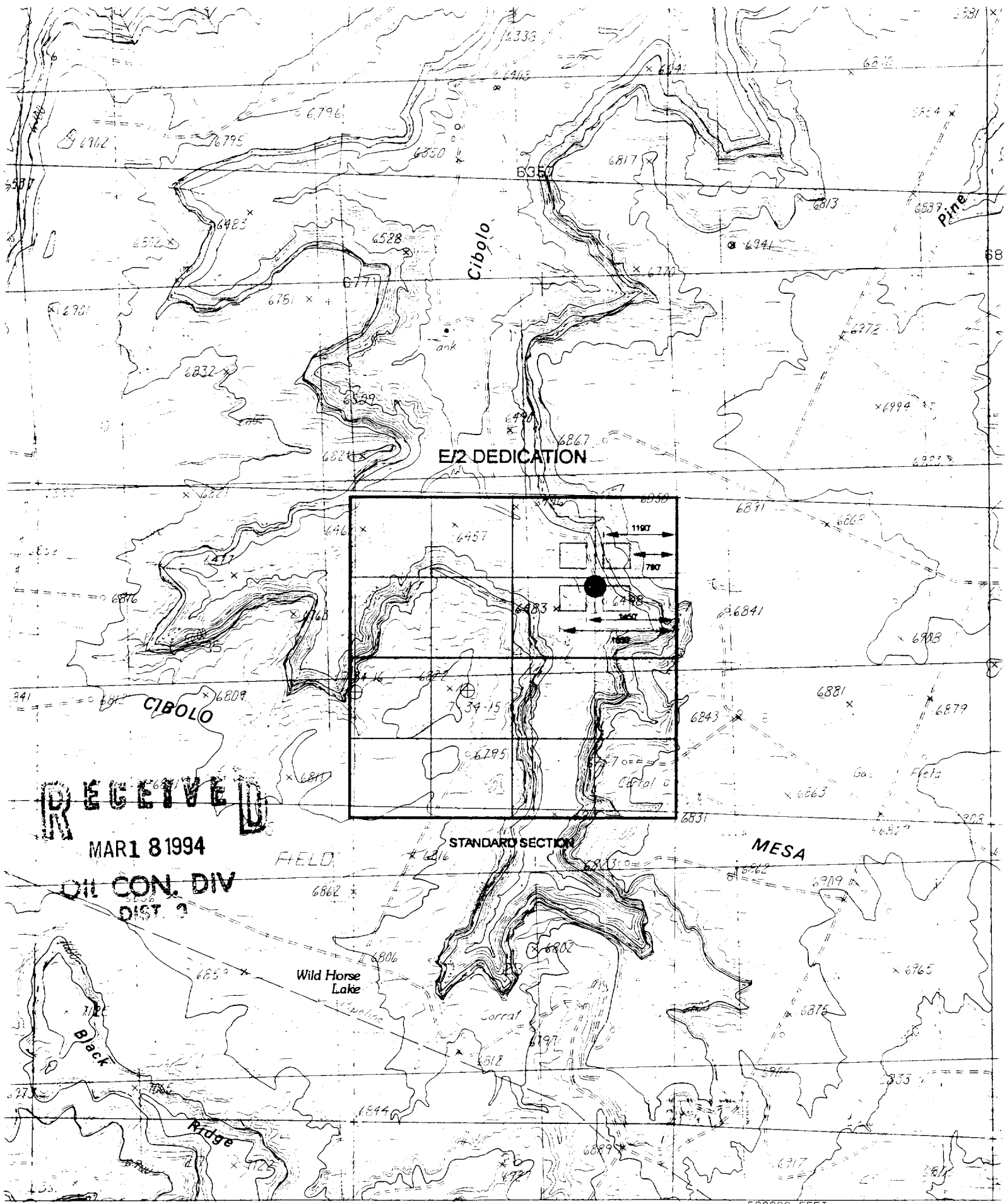
Unorhtodox Dakota Well Location

Township 25 North, Range 7 West



1) Meridian Oil Inc

[illegible]



RECEIVED

MAR 18 1994

OIL CON. DIV
DIST. 2

STANDARD SECTION

MESA

Wild Horse Lake

Corral

Ridge

Beck

SCALE 1:24 000

