

UNITED STATES  
DEPARTMENT OF THE INTERIOR  
BUREAU OF LAND MANAGEMENT

## APPLICATION FOR PERMIT TO DRILL OR DEEPEN

1a. Type of Work

DRILL ☒DEEPEN ☐

b. Type of Well

Oil ☐Gas ☒

Other

Single Zone ☐Multiple Zone ☒

2. Name of Operator

Merit Energy

12222 Merit Drive, Suite 1500, Dallas, TX 75251

3. Address and Telephone No.

AGENT

(505) 325-8786

On Site Technologies, Ltd.

P.O. Box 2606, Farmington, NM 87499

4. Location of Well (Report location clearly and in accordance with any State requirements.)\*

At surface

850' FWL &amp; 1045' FSL

At proposed prod. zone

Same

14. Distance in Miles and Direction From Nearest Town or Post Office\*

Approximately 16 miles from Lindrieth, NM

15. Distance from Proposed\* Location to  
Nearest Property or Lease Line, Ft.  
(Also to nearest drlg. unit line, if any)

850'

18. Distance from Proposed Location\* to  
Nearest Well, Drilling, Completed, or  
Applied For, On This Lease, Ft.

45'

21. Elevations (Show whether DF, RT, GR, etc.)

6903' GL

5. Lease Designation and Serial No.  
Jicarilla Conf. #105

6. If Indian, Allottee or Tribe Name

Jicarilla Apache

7. Unit Agreement Name

N/A

8. Farm or Lease Name, Well No.

13594

Jicarilla A #24 9M ✓

9. API Well No.

30-034-25518.1

10. Field and Pool, or Wildcat

Mesa Verde/Dakota

11. Sec., T., R., M., or Blk.  
and Survey or Area

Sec. 14, T26N, R4W

12. County or Parish

Rio Arriba

13. State

NM

17. No. of Acres Assigned to This Well

15/320 160 16/320

20. Rotary or Cable Tools

Rotary

22. Approx. Date Work will Start\*

June 1, 1995

23.

## PROPOSED CASING AND CEMENTING PROGRAM

Size of Hole

Grade, Size of Casing

Weight Per Foot

Setting Depth

Quantity of Cement

12 1/2"

J55 8 5/8"

24 #

300' 320'

230 sxs class B @ 15.6#/gal.

8 5/8" 7 7/8"

J55 5 1/2"

15.5# / 17.0#

8000'

Lead 400 sxs class B 50/50/Pozmix @ 11.7#/gal.

Tail 120 sxs class B @ 15.6#/gal.

Second stage:

Lead 800 sxs class B 50/50/Pozmix @ 11.7 #/gal.

Tail 50 sxs class B @ 15.6#/gal.

DV Tool at 5500'

1200' of 5.5"/17# J-55 to 1200' depth  
6,000' of 5.5"/15.5 J-55 to 7,200' depth  
800' of 5.5"/17# J-55 to 8,000' depthRECEIVED  
JUN 13 1995OIL CON. DIV.  
SEE ATTACHED DRILLING PROGRAMRECEIVED  
JUN - 9 1995  
OIL CON. DIV.  
DATE 3

IN ABOVE SPACE DESCRIBE PROPOSED PROGRAM: If proposal is to deepen, give data on present productive zone and proposed new productive zone. If proposal is to drill or deepen directionally, give pertinent data on subsurface locations and measured and true vertical depths. Give blowout preventer program, if any.

24.

Signed

ROBERT CRABB

Title

AGENT FOR MERIT ENERGY

Date

March 31, 1995

(This space for Federal or State office use)

Permit No.

Approval Date

Application approval does not warrant or certify that the applicant holds legal or equitable title to those rights in the subject lease which would entitle the applicant to conduct operations thereon.  
Conditions of Approval, If Any:

Approved By

Joe Incardine

Title

Acting AREA MANAGER  
RIO PUERCO RESOURCE AREA

Date

MAY 31 1995

\*See Instruction on Reverse Side

Title 18 U.S.C. Section 1001, makes it a crime for any person knowingly and willfully to make to any department or agency of the United States any false, fictitious or fraudulent statements or representations as to any matter within its jurisdiction.

District I  
P.O. Box 1980, Hobbs, NM 88241  
District II  
P.O. Drawer DD, Artesia, NM 88211  
District III  
1000 Rio Brazos Rd, Aztec, NM 87410  
District IV  
P.O. Box 2088, Santa Fe, NM 87504

State of New Mexico  
Energy, Minerals and Natural Resources Department

OIL CONSERVATION DIVISION  
P.O. Box 2088  
Santa Fe, New Mexico 87504-2088

Form C-102  
Revised February 21, 1994  
Instructions on back  
Submit to Appropriate District Office  
State Lease - 4 Copies  
Fee Lease - 3 Copies

☐ AMENDED REPORT

WELL LOCATION AND ACREAGE DEDICATION PLAT

1. API Number <i>30-039-25518</i>	2. Pool Code 72319	3. Pool Name BLANCO MEA VERDE
4. Property Code <i>13594</i>	5. Property Name JICARILLA <i>A</i>	6. Well Number <i>#249M</i>
7. OGRID No. 14591	8. Operator Name MERIT ENERGY COMPANY	9. Elevation 6903



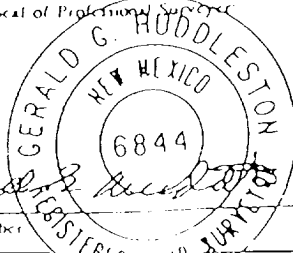
10. Surface Location

UL or lot no. M	Section 14	Township 26 N	Range 4 W	Lot Idn	Feet from the 1045	North/South line SOUTH	Feet from the 850	East/West line WEST	County RIO ARRIBA
--------------------	---------------	------------------	--------------	---------	-----------------------	---------------------------	----------------------	------------------------	----------------------

11. Bottom Hole Location If Different From Surface

UL or lot no.	Section	Township	Range	Lot Idn	Feet from the	North/South line	Feet from the	East/West line	County
12. Dedicated Acres 320	13. Joint or Infill	14. Consolidation Code	15. Order No.						

NO ALLOWABLE WILL BE ASSIGNED TO THIS COMPLETION UNTIL ALL INTERESTS HAVE BEEN CONSOLIDATED  
OR A NON-STANDARD UNIT HAS BEEN APPROVED BY THE DIVISION

16.	<i>Blanco mesa Verde / Basin Dakota</i> 			17. OPERATOR CERTIFICATION I hereby certify that the information contained herein is true and complete to the best of my knowledge and belief.  Signature Printed Name ROBERT L. CRABB Title AGENT FOR MERIT ENERGY COMPANY Date JUNE 6, 1995
				18. SURVEYOR CERTIFICATION I hereby certify that the well location shown on this plat was plotted from field notes of actual surveys made by me or under my supervision, and that the same is true and correct to the best of my belief. Date of Survey Signature and Seal of Professional Surveyor  Certificate Number

District I

P.O. Box 1980, Hobbs, NM 88241

District II

P.O. Drawer DD, Artesia, NM 88211

District III

1000 Rio Brazos Rd, Aztec, NM 87410

District IV

P.O. Box 2088, Santa Fe, NM 87504

State of New Mexico  
Energy, Minerals and Natural Resources Department

## OIL CONSERVATION DIVISION

P.O. Box 2088  
Santa Fe, New Mexico 87504-2088

Form C-102

Revised February 21, 1994

Instructions on back

Submit to Appropriate District Office

State Lease - 4 Copies

Fee Lease - 3 Copies

☐ AMENDED REPORT

## WELL LOCATION AND ACREAGE DEDICATION PLAT

1. API Number <i>30-034-25518</i>		2. Pool Code 71599		3. Pool Name BASIN DAKOTA	
4. Property Code <i>13594</i>		5. Property Name JICARILLA <i>A</i>			6. Well Number <i>#249M</i>
7. OGRID No. 14591		8. Operator Name MERIT ENERGY COMPANY			9. Elevation 6903

## 10. Surface Location

UL or lot no. M	Section 14	Township 26 N	Range 4 W	Lot Idn	Feet from the 1045	North/South line SOUTH	Feet from the 850	East/West line WEST	County RIO ARriba
--------------------	---------------	------------------	--------------	---------	-----------------------	---------------------------	----------------------	------------------------	----------------------

## 11. Bottom Hole Location If Different From Surface

UL or lot no.	Section	Township	Range	Lot Idn	Feet from the	North/South line	Feet from the	East/West line	County
12. Dedicated Acres 320		13. Joint or Infill		14. Consolidation Code		15. Order No.			

NO ALLOWABLE WILL BE ASSIGNED TO THIS COMPLETION UNTIL ALL INTERESTS HAVE BEEN CONSOLIDATED  
OR A NON-STANDARD UNIT HAS BEEN APPROVED BY THE DIVISION

16.  <i>Blanco Mesa Verde Basin Dakota</i>  <i>A-9</i>		17. OPERATOR CERTIFICATION I hereby certify that the information contained herein is true and complete to the best of my knowledge and belief.  <i>Robert L. Crabb</i> Signature  Printed Name ROBERT L. CRABB  Title AGENT FOR MERIT ENERGY COMPANY  Date JUNE 6, 1995
		18. SURVEYOR CERTIFICATION I hereby certify that the well location shown on this plat was plotted from field notes of actual surveys made by me or under my supervision, and that the same is true and correct to the best of my belief.  Date of Survey Signature and Seal of Professional Surveyor 

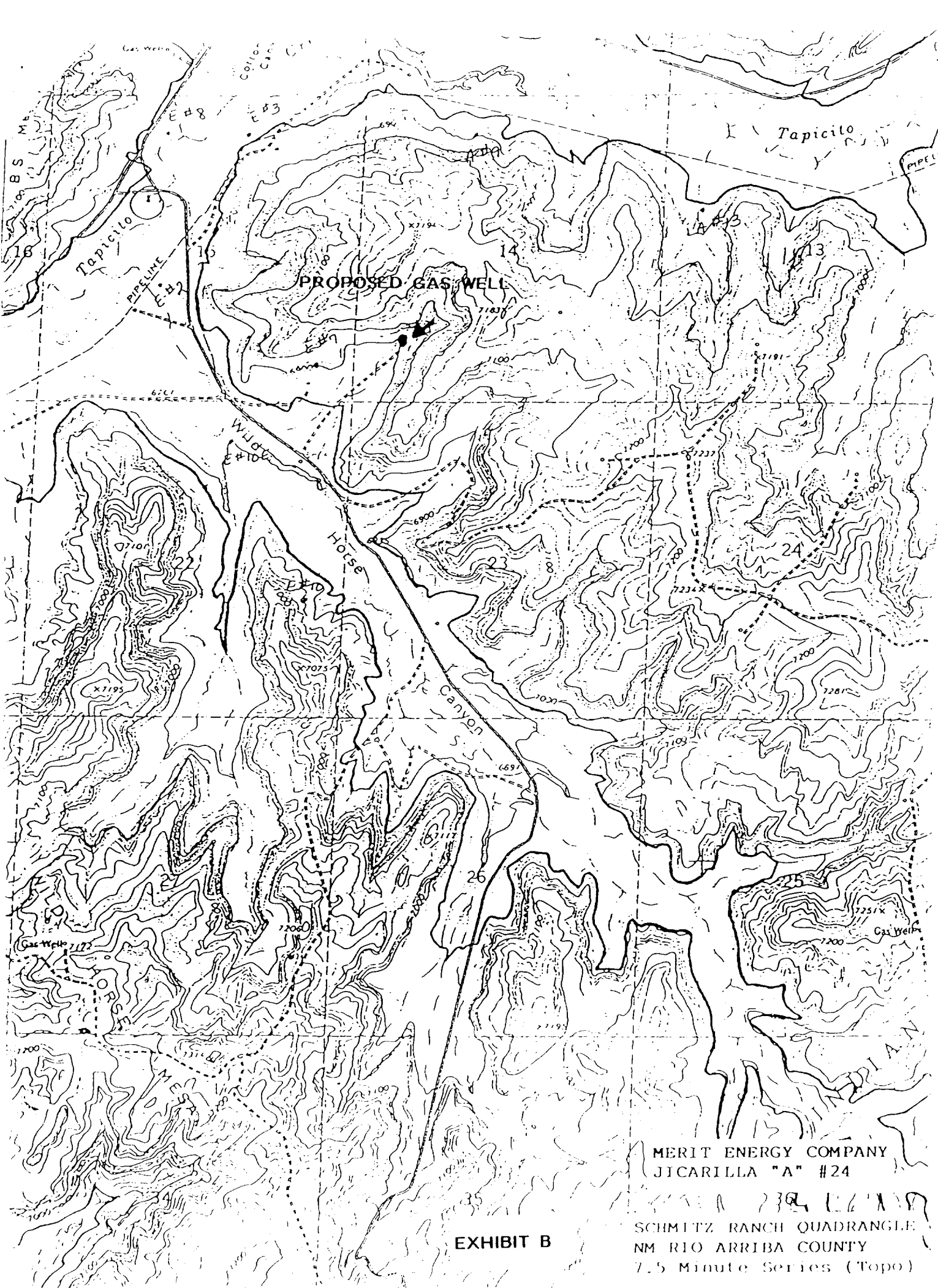


EXHIBIT B

MERIT ENERGY COMPANY  
JICARILLA "A" #24

SCHMITZ RANCH QUADRANGLE  
NM RIO ARRIBA COUNTY  
7.5 Minute Series (Topo)