

UNITED STATES
DEPARTMENT OF THE INTERIOR
BUREAU OF LAND MANAGEMENT

APPLICATION FOR PERMIT TO DRILL OR DEEPEN

1a. Type of Work
DRILL X **DEEPEN ☐**

b. Type of Well
Oil ☐ Gas X Other ☐ Single Zone ☐ Multiple Zone X

2. Name of Operator 14591
MERIT ENERGY COMPANY 12222 Merit Drive, Suite 1500, Dallas, TX 75251

3. Address and Telephone No. AGENT 505-325-8786
On Site Technologies, Ltd. P.O. Box 2606 Farmington, NM 87449

4. Location of Well (Report location clearly and in accordance with any State requirements.)*
At surface 1660'
At proposed prod. zone 1660' FWL & 1600' FSL
SAME

14. Distance in Miles and Direction From Nearest Town or Post Office*
APPX. 10 MILES NW OF LINDRITH, NM

15. Distance from Proposed* Location to Nearest Property or Lease Line, Ft. 1600'
(Also to nearest drlg. unit line, if any)

16. No. of Acres in Lease 2560'

18. Distance from Proposed Location* to Nearest Well, Drilling, Completed, or Applied For, On This Lease, Ft. 50'

19. Proposed Depth 8000'

21. Elevations (Show whether DF, RT, GR, etc.)
6871' GL

5. Lease Designation and Serial No.
Jicarilla Cont. # 105

6. If Indian, Allottee or Tribe Name
Jicarilla Apache

7. Unit Agreement Name

8. Farm or Lease Name, Well No.
Jicarilla A#25 8M 13594

9. API Well No.
30-039-25521

10. Field and Pool, or Wildcat
Mesa Verde/Dakota 71599

11. Sec., T., R., M., or Blk. and Survey or Area
Sec. 23, T-26-N, R-4-W

12. County or Parish
Rio Arriba

13. State
NM

17. No. of Acres Assigned to This Well
460

20. Rotary or Cable Tools
ROTARY

22. Approx. Date Work will Start*
May 15, 1995

23. PROPOSED CASING AND CEMENTING PROGRAM				
Size of Hole	Grade, Size of Casing	Weight Per Foot	Setting Depth	Quantity of Cement
<u>12 1/4"</u>	J55 8 5/8"	24#F	<u>300' 320'</u>	280 sxs class B@15.6#/gal
<u>8 5/8"</u> <u>7 7/8"</u>	J55 5 1/2"	15.5# / 17.0#	8000'	Lead 400 sxs class B 50/50 Pozmix @ 11.7#/gal.
				Tail 120 sxs class B @15.6#/gal.
				DV Tool set at 5500'
				Second stage:
				Lead 800 sxs class B 50/50Pozmix @ 11.7#/gal.
				Tail: 50sxs class B@15.6#/gal.

RECEIVED
JUN - 9 1995
OIL & GAS DIV.
FSL 8

1200' of 5.5"/17# J-55 to 1200'
6,000' of 5.5"/15.5# J-55 to 7,200'
800' of 5.5"/17# J-55 to 8,000'

SEE ATTACHED DRILLING PROGRAM

IN ABOVE SPACE DESCRIBE PROPOSED PROGRAM: If proposal is to deepen, give data on present productive zone and proposed new productive zone. If proposal is to drill or deepen directionally, give pertinent data on subsurface locations and measured and true vertical depths. Give blowout preventer program, if any.

24. Signed Robert L. Crabb Title AGENT FOR MERIT Date March 31, 1995

(This space for Federal or State office use)

Permit No. _____ Approval Date _____

Application approval does not warrant or certify that the applicant holds legal or equitable title to those rights in the subject lease which would enable the applicant to conduct operations thereon.
Conditions of Approval, If Any:

Approved By Joe Incardine Title Acting AREA MANAGER RIO PUERCO RESOURCE AREA Date MAY 31 1995

*See Instruction on Reverse Side

Title 18 U.S.C. Section 1001, makes it a crime for any person knowingly and willfully to make to any department or agency of the United States any false, fictitious or fraudulent statements or representations as to any matter within its jurisdiction.

District I
P.O. Box 1980, Hobbs, NM 88241
District II
P.O. Drawer DD, Artesia, NM 88211
District III
1000 Rio Brazos Rd, Aztec, NM 87410
District IV
P.O. Box 2088, Santa Fe, NM 87504

State of New Mexico
Energy, Minerals and Natural Resources Department
OIL CONSERVATION DIVISION
P.O. Box 2088
Santa Fe, New Mexico 87504-2088

Form C-102
Revised February 21, 1994
Instructions on back
Submit to Appropriate District Office
State Lease - 4 Copies
Fee Lease - 3 Copies

☐ AMENDED REPORT

WELL LOCATION AND ACREAGE DEDICATION PLAT

1. API Number <i>30-039-25521</i>	2. Pool Code 72319	3. Pool Name BLANCO MEA VERDE
4. Property Code <i>13594</i>	5. Property Name JICARILLA <i>A</i>	6. Well Number <i>#25 8M</i>
7. OGRID No. 14591	8. Operator Name MERIT ENERGY COMPANY	9. Elevation 6871

10. Surface Location

UL or lot no. K	Section 23	Township 26 N	Range 4 W	Lot Idn	Feet from the <i>1660</i> <i>1660</i>	North/South line SOUTH	Feet from the 1660	East/West line WEST	County RIO ARriba
--------------------	---------------	------------------	--------------	---------	---	---------------------------	-----------------------	------------------------	----------------------

11. Bottom Hole Location If Different From Surface

UL or lot no.	Section	Township	Range	Lot Idn	Feet from the	North/South line	Feet from the	East/West line	County
12. Dedicated Acres 320	13. Joint or Infill	14. Consolidation Code	15. Order No.						

NO ALLOWABLE WILL BE ASSIGNED TO THIS COMPLETION UNTIL ALL INTERESTS HAVE BEEN CONSOLIDATED
OR A NON-STANDARD UNIT HAS BEEN APPROVED BY THE DIVISION

16.					17. OPERATOR CERTIFICATION I hereby certify that the information contained herein is true and complete to the best of my knowledge and belief. <i>Robert L. Crabb</i> Signature Printed Name ROBERT L. CRABB Title AGENT FOR MERIT ENERGY COMPANY Date JUNE 6, 1995
MESA VERDE					18. SURVEYOR CERTIFICATION I hereby certify that the well location shown on this plat was plotted from field notes of actual surveys made by me or under my supervision, and that the same is true and correct to the best of my belief. <i>17-9-94</i> Date of Survey Signature and Seal of Professional Surveyor GERALD G. HUDDLESTON NEW MEXICO 6844 Certificate Number REGISTERED LAND SURVEYOR

District I
P.O. Box 1980, Hobbs, NM 88241

District II
P.O. Drawer DD, Artesia, NM 88211

District III
1000 Rio Brazos Rd, Aztec, NM 87410

District IV
P.O. Box 2088, Santa Fe, NM 87504

State of New Mexico
Energy, Minerals and Natural Resources Department

OIL CONSERVATION DIVISION
P.O. Box 2088
Santa Fe, New Mexico 87504-2088

Form C-102

Revised February 21, 1994

Instructions on back

Submit to Appropriate District Office

State Lease - 4 Copies

Fee Lease - 3 Copies

☐ AMENDED REPORT

WELL LOCATION AND ACREAGE DEDICATION PLAT

1. API Number <i>36-039-25521</i>	2. Pool Code 71599	3. Pool Name BASIN DAKOTA
4. Property Code <i>13594</i>	5. Property Name JICARILLA <i>A</i>	6. Well Number <i>#288M</i>
7. OGRID No. 14591	8. Operator Name MERIT ENERGY COMPANY	9. Elevation 6871

10. Surface Location

UL or lot no. K	Section 23	Township 26 N	Range 4 W	Lot Idn	Feet from the 1660 <i>1660</i>	North/South line SOUTH	Feet from the 1660	East/West line WEST	County RIO ARRIBA
--------------------	---------------	------------------	--------------	---------	--------------------------------------	---------------------------	-----------------------	------------------------	----------------------

11. Bottom Hole Location If Different From Surface

UL or lot no.	Section	Township	Range	Lot Idn	Feet from the	North/South line	Feet from the	East/West line	County
12. Dedicated Acres 320	13. Joint or Infill	14. Consolidation Code	15. Order No.						

NO ALLOWABLE WILL BE ASSIGNED TO THIS COMPLETION UNTIL ALL INTERESTS HAVE BEEN CONSOLIDATED
OR A NON-STANDARD UNIT HAS BEEN APPROVED BY THE DIVISION

16.				17. OPERATOR CERTIFICATION I hereby certify that the information contained herein is true and complete to the best of my knowledge and belief. <i>Robert L. Crabb</i> Signature Printed Name ROBERT L. CRABB Title AGENT FOR MERIT ENERGY COMPANY Date JUNE 6, 1995
DAKOTA				18. SURVEYOR CERTIFICATION I hereby certify that the well location shown on this plat was plotted from field notes of actual surveys made by me or under my supervision, and that the same is true and correct to the best of my belief. <i>12-9-94</i> Date of Survey Signature and Seal of Professional Surveyor GERALD G. HUBBLESTON NEW MEXICO 6844 Certificate Number
1660'				

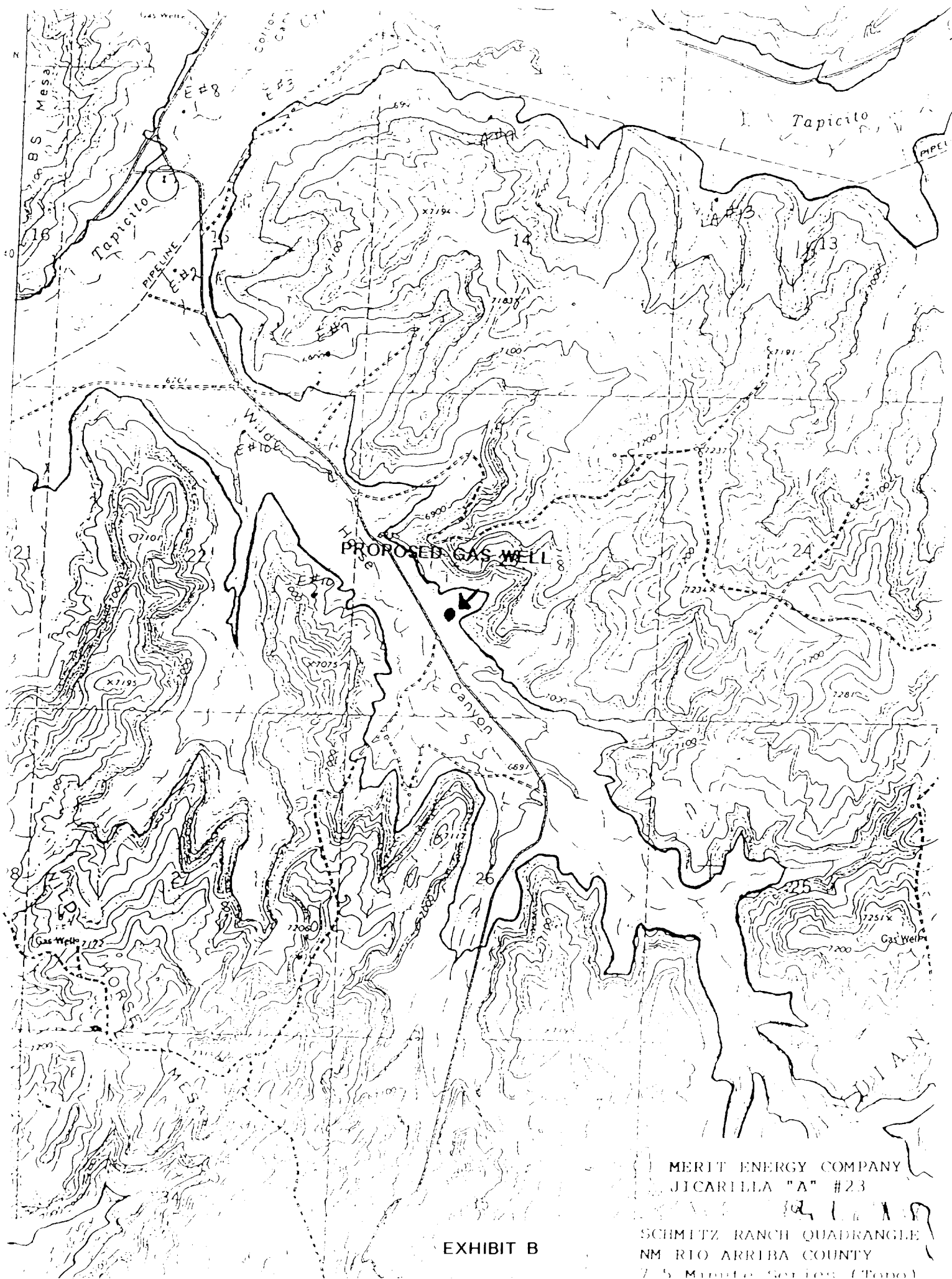


EXHIBIT B