

UNITED STATES
DEPARTMENT OF THE INTERIOR
BUREAU OF LAND MANAGEMENTSUBMIT IN TRIPLICATE*
(Other instructions on
reverse side)FORM APPROVED
OMB NO. 1004-0136
Expires: February 23, 1995

APPLICATION FOR PERMIT TO DRILL OR DEEPEN

1. TYPE OF WORK

DRILL ☒DEEPEN ☐RECEIVED
SEP 17 1997

2. TYPE OF WELL

OIL
WELL ☐GAS
WELL ☒OTHER ☐SINGLE
ZONE ☒MULTIPLE
ZONE ☐

3. NAME OF OPERATOR

DUGAN PRODUCTION CORP. 6515

4. ADDRESS AND TELEPHONE NO.

P.O. BOX 420, FARMINGTON, NM 87499

5. LOCATION OF WELL (Report location clearly and in accordance with any State requirements.)*

At surface *920' FSL & 790' FEL

At proposed prod. zone

RECEIVED
SEP 17 1997OIL CON. DIV.
DIST. 3

14. DISTANCE IN MILES AND DIRECTION FROM NEAREST TOWN OR POST OFFICE*

Approx. 17.5 mi NE of Blanco Trading Post, NM

15. DISTANCE FROM PROPOSED*

LOCATION TO NEAREST
PROPERTY OR LEASE LINE, FT.
(Also to nearest drig. unit line, if any)

790'

16. NO. OF ACRES IN LEASE

160

17. DISTANCE FROM PROPOSED LOCATION*

TO NEAREST WELL, DRILLING, COMPLETED,
OR APPLIED FOR, ON THIS LEASE, FT. from

approx. 1073'

Scott 1-P&Ad

18. PROPOSED DEPTH

3475'

21. ELEVATIONS (Show whether DF, RT, GR, etc.)

6130' Est. GL

This action is subject to technical and
procedural review pursuant to 43 CFR 3165.3
and appeal pursuant to 43 CFR 3165.4.17. NO. OF ACRES ASSIGNED
TO THIS WELL

160

20. ROTARY OR CABLE TOOLS

Rotary

22. APPROX. DATE WORK WILL START*

ASAP

23. PROPOSED CASING AND CEMENTING PROGRAM

SIZE OF HOLE	GRADE SIZE OF CASING	WEIGHT PER FOOT	SETTING DEPTH	QUANTITY OF CEMENT
12-1/4"	8-5/8"	24#	200'	159 cf circ. to surface
7-7/8"	4-1/2"	10.5#	3475'	1187 cf circ. to surface

DRILLING OPERATIONS AUTHORIZED ARE
SUBJECT TO COMPLIANCE WITH ATTACHED
"GENERAL REQUIREMENTS".

Plan to drill a 12-1/4" hole and set 200' of 8-5/8" OD, 24#, J-55 surface casing; then plan to drill a 7-7/8" hole to total depth with gel-water-mud program to test the Chacra formation. Plan to run IES and CDL logs. If determined productive, will run 4-1/2", 10.5#, J-55 casing with stage tool, selectively perforate, frac, clean out after frac and complete well.

*Well was originally staked at 790' FSL and 790' FEL, Section 14, T26N, R7W, but was moved 130' North to avoid an El Paso Natural Gas pipeline. Location size is now 200' x 200'. All other information at the time of the on-site remains the same.

IN ABOVE SPACE DESCRIBE PROPOSED PROGRAM. If proposal is to deepen, give data on present productive zone and proposed new productive zone. If proposal is to drill or deepen directionally, give pertinent data on subsurface locations and measured and true vertical depths. Give blowout preventer program, if any.

24. SIGNED Sherman E. Dugan TITLE Vice-President DATE 8/27/97
(This space for Federal or State office use)

PERMIT NO. _____

APPROVAL DATE SEP 15 1997

Application approval does not warrant or certify that the applicant holds legal or equitable title to those rights in the subject lease which would entitle the applicant to conduct operations thereon.

CONDITIONS OF APPROVAL, IF ANY:

OK /s/ Duane W. Spencer TITLE _____ DATE _____

SEP 15 1997

*See Instructions On Reverse Side

Title 18 U.S.C. Section 1001, makes it a crime for any person knowingly and willfully to make to any department or agency of the United States any false, fictitious or fraudulent statements or representations as to any matter within its jurisdiction.

NMCCD

District I
PO Box 1980, Hobbs, NM 88241-1980
District II
PO Drawer DD, Artesia, NM 88211-0719
District III
1000 Rio Brazos Rd., Aztec, NM 87410
District IV
PO Box 2088, Santa Fe, NM 87504-2088

State of New Mexico
Energy, Minerals & Natural Resources Department

OIL CONSERVATION DIVISION
PO Box 2088
Santa Fe, NM 87504-2088

Form C-102
Revised February 21, 1994
Instructions on back
Submit to Appropriate District Office
State Lease - 4 Copies
Fee Lease - 3 Copies

☐ AMENDED REPORT

WELL LOCATION AND ACREAGE DEDICATION PLAT

1 APT Number 30-039 - 25739		2 Pool Code 82329		3 Pool Name Otero Chacra EXT		
4 Property Code 21582		5 Property Name Mona Lisa			6 Well Number 1	
7 OGRID No. 006515		8 Operator Name Dugan Production Corporation			9 Elevation 6128' Estimated	

10 Surface Location

UL or lot no.	Section 14	Township 26N	Range 7W	Lot Idn P	Feet from the 920	North/South line South	Feet from the 790	East/West line East	County Rio Arriba
---------------	---------------	-----------------	-------------	--------------	----------------------	---------------------------	----------------------	------------------------	----------------------

11 Bottom Hole Location If Different From Surface

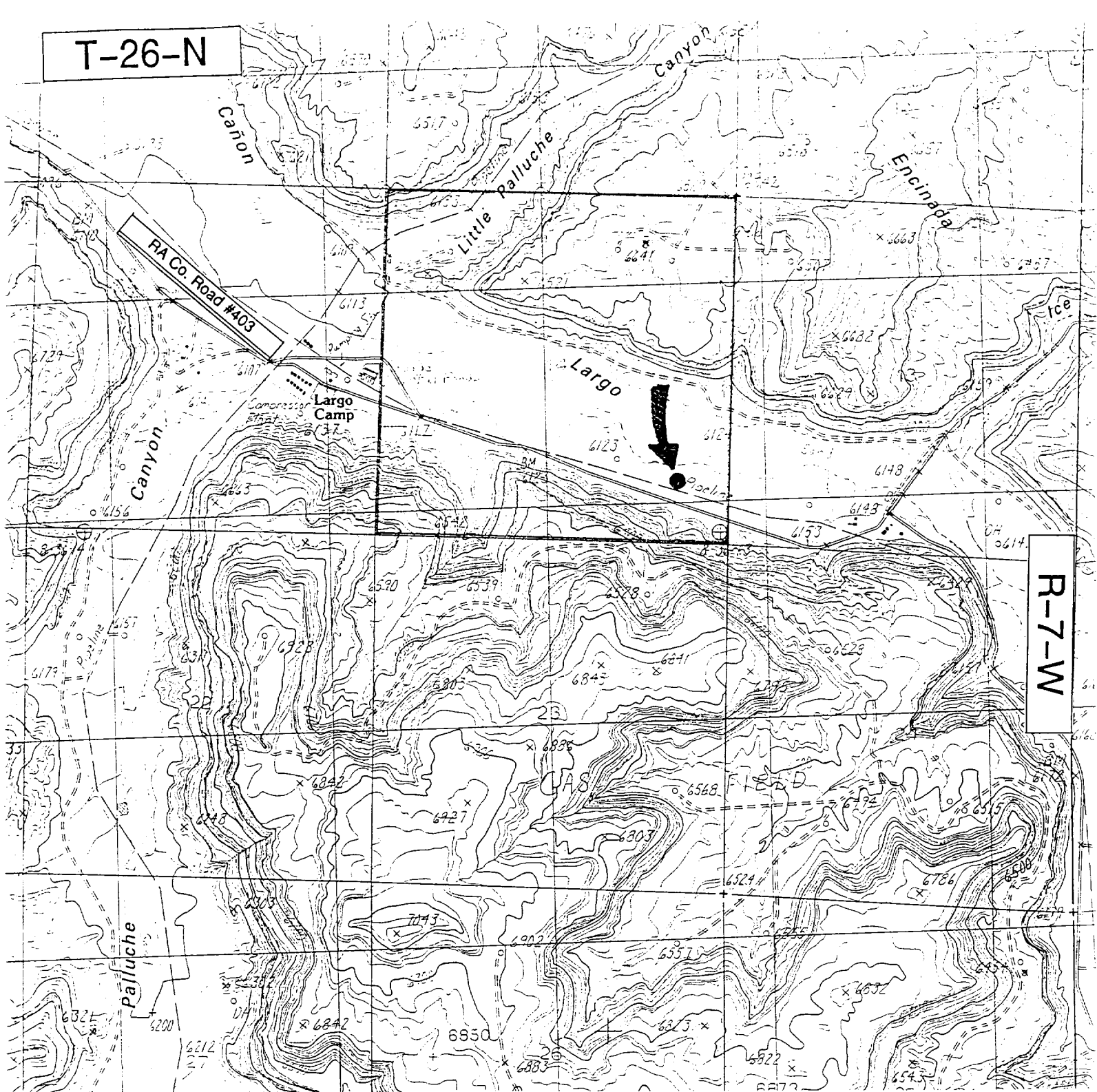
UL or lot no.	Section	Township	Range	Lot Idn	Feet from the	North/South line	Feet from the	East/West line	County
---------------	---------	----------	-------	---------	---------------	------------------	---------------	----------------	--------

12 Dedicated Acres 160	13 Joint or Infill	14 Consolidation Code	15 Order No.
---------------------------	--------------------	-----------------------	--------------

NO ALLOWABLE WILL BE ASSIGNED TO THIS COMPLETION UNTIL ALL INTERESTS HAVE BEEN CONSOLIDATED
OR A NON-STANDARD UNIT HAS BEEN APPROVED BY THE DIVISION

16				17 OPERATOR CERTIFICATION I hereby certify that the information contained herein is true and complete to the best of my knowledge and belief Signature Sherman E. Dugan Printed Name Vice-President Title August 27, 1997 Date	
Section 14				18 SURVEYOR CERTIFICATION I hereby certify that the well location shown on this plat was plotted from field notes of actual surveys made by me or under my supervision, and that the same is true and correct to the best of my belief. August 26, 1997 Date of Survey Signature and Seal of Edgardo R. Risenhoover NEW MEXICO 5979 Professional Surveyor Certificate Number 5979	
Dugan Prod. NM-99002				790' 920'	

T-26-N



Existing Roads

Exhibit E

Planned Access Road(s)

Exhibit E

Vicinity of nearest town or reference pt.
Approx. 26 mi. SE Blanco, NM

Type of surface dirt

Conditions good

Other _____

Reference map: USGS map

Smouse Mesa, NM

Dugan Production Corp.
Mona Lisa #1

Width 20' Maximum grades _____

Drainage design _____ as required

Cuts & Fills _____ as required

Surfacing material none

Turnouts

Culverts

Gates

Cattleguards

Fence cuts

Waterbars

Access Road &
Pipeline

Access road(s) do/do not cross Fed/Ind land.
No new access required.