

UNITED STATES  
DEPARTMENT OF THE INTERIOR  
BUREAU OF LAND MANAGEMENT

## APPLICATION FOR PERMIT TO DRILL OR DEEPEN

## 1a. TYPE OF WORK

DRILL ☒DEEPEN ☐

## b. TYPE OF WELL

OIL  
WELL ☐GAS  
WELL ☒

OTHER

SINGLE  
ZONE ☒MULTIPLE  
ZONE ☐

## 2. NAME OF OPERATOR

Conoco Inc. 5073

## a. ADDRESS AND TELEPHONE NO

10 Desta Dr. Ste 430E, Midland, Tx. 79705-4500

915-686-5794

## 4. LOCATION OF WELL (Report location clearly and in accordance with any State requirements \*)

At surface

1675' FNL &amp; 1845' FEL

At proposed prod. zone

1675' FNL &amp; 1845' FEL

## 14. DISTANCE IN MILES AND DIRECTION FROM NEAREST TOWN OR POST OFFICE\*

## 5. DISTANCE FROM PROPOSED\*

LOCATION TO NEAREST  
PROPERTY OR LEASE LINE, FT.  
(Also to nearest drlg. unit line, if Any)

## 16. NO. OF ACRES IN LEASE

17. NO. OF ACRES ASSIGNED  
TO THIS WELL8. DISTANCE FROM PROPOSED LOCATION\*  
TO NEAREST WELL, DRILLING, COMPLETED,  
OR APPLIED FOR, ON THIS LEASE, FT.

## 19. PROPOSED DEPTH

8159'

## 20. ROTARY OR CABLE TOOLS

Rotary

## 21. ELEVATIONS (Show whether DF, RT, GR, etc.)

6764' GR

## 22. APPROX. DATE WORK WILL START\*

4/15/98

23

## PROPOSED CASING AND CEMENTING PROGRAM

SIZE OF HOLE	GRADE, SIZE OF CASING	WEIGHT PER FOOT	SETTING DEPTH	QUANTITY OF CEMENT
12-1/4"	K-55, 9-5/8"	36#	300'	160 sxs, circ.
8-3/4"	K-55, 7"	23#	3883'	485 sxs, circ.
6-1/4"	K-55, 4-1/2"	10.5#	7859'	400 sxs, toc @ 3700'

It is proposed to drill vertical wellbore to be downhole commingled in the Blanco Mesaverde and Basin Dakota Pools following the acquisition of sufficient production test data for allocation purposes. A downhole commingling application will be filed with the BLM and NMOC prior to commingling. A NOS was filed 10/31/97. This well will be drilled and equipped according to the following attachments:

1. Well Location & Acreage Dedication Plat (C-102) and other associated plats.
2. Proposed Well Plan Outline.
3. Cementing Plan.
4. Blowout Preventer Hookup.
5. Surface Use Plan with Production Facility Layout.
6. Pipeline survey plat.

RECEIVED  
APR 28 1998  
OIL CON. DIV.  
DIST. 3RECEIVED  
BLM  
98 MAR 10 AM 7:56  
OIL ALBUQUERQUE, N.M.

This application includes ROW's for the wellpad and access road.

IN ABOVE SPACE DESCRIBE PROPOSED PROGRAM: If proposal is to deepen give data on present productive zone and proposed new productive zone. If proposal is to drill or deepen directionally, give pertinent data on subsurface locations and measured and true vertical depths. Give blowout preventer program, if any.

24. SIGNED Mike L. Mankin TITLE Right-of-Way Agent DATE March 4, 1998

(This space for Federal or State office use)

PERMIT NO. \_\_\_\_\_ APPROVAL DATE \_\_\_\_\_

Application approval does not warrant or certify that the applicant holds legal or equitable title to those rights in the subject lease which would entitle the applicant to conduct operations thereon.

CONDITIONS OF APPROVAL, IF ANY:

APPROVED BY (Original Signed) NECTOR A. VILLALOBOS TITLE Asst Field Manager DATE APR 23 1998

\*See Instructions On Reverse Side

Title 18 U.S.C. Section 1001 makes it a crime for any person knowingly and willfully to make to any department or agency of the United States any false, fictitious or fraudulent statements or representations as to any matter within its jurisdiction.

District I  
PO Box 1980, Hobbs, NM 88241-1980

District II  
PO Drawer DD, Artesia, NM 88211-0719

District III  
1000 Rio Brazos Rd., Aztec, NM 87410

District IV  
PO Box 2088, Santa Fe, NM 87504-2088

State of New Mexico  
Energy, Minerals & Natural Resources Department

OIL CONSERVATION DIVISION  
PO Box 2088  
Santa Fe, NM 87504-2088

Form O-101  
Revised February 21, 1994  
Instructions on back  
Submit to Appropriate District Office  
State Lease - 4 Copies  
Fee Lease - 3 Copies

☐ AMENDED REPORT

WELL LOCATION AND ACREAGE DEDICATION PLAT

1 API Number <b>30-039-25843</b>		2 Pool Code <b>72319 / 71599</b>		3 Pool Name <b>Blanco Mesaverde/Basin Dakota</b>	
4 Property Code <b>18022</b>		5 Property Name <b>JICARILLA E</b>			6 Well Number <b>9M</b>
7 OGRID No. <b>005073</b>		8 Operator Name <b>CONOCO, INC.</b>			9 Elevation <b>6764'</b>

10 Surface Location

UL or lot no. <b>J</b>	Section <b>16</b>	Township <b>26N</b>	Range <b>4W</b>	Lot Idn	Feet from the <b>1675</b>	North/South line <b>South</b>	Feet from the <b>1845</b>	East/West line <b>East</b>	County <b>RIO ARriba</b>
---------------------------	----------------------	------------------------	--------------------	---------	------------------------------	----------------------------------	------------------------------	-------------------------------	-----------------------------

11 Bottom Hole Location If Different From Surface

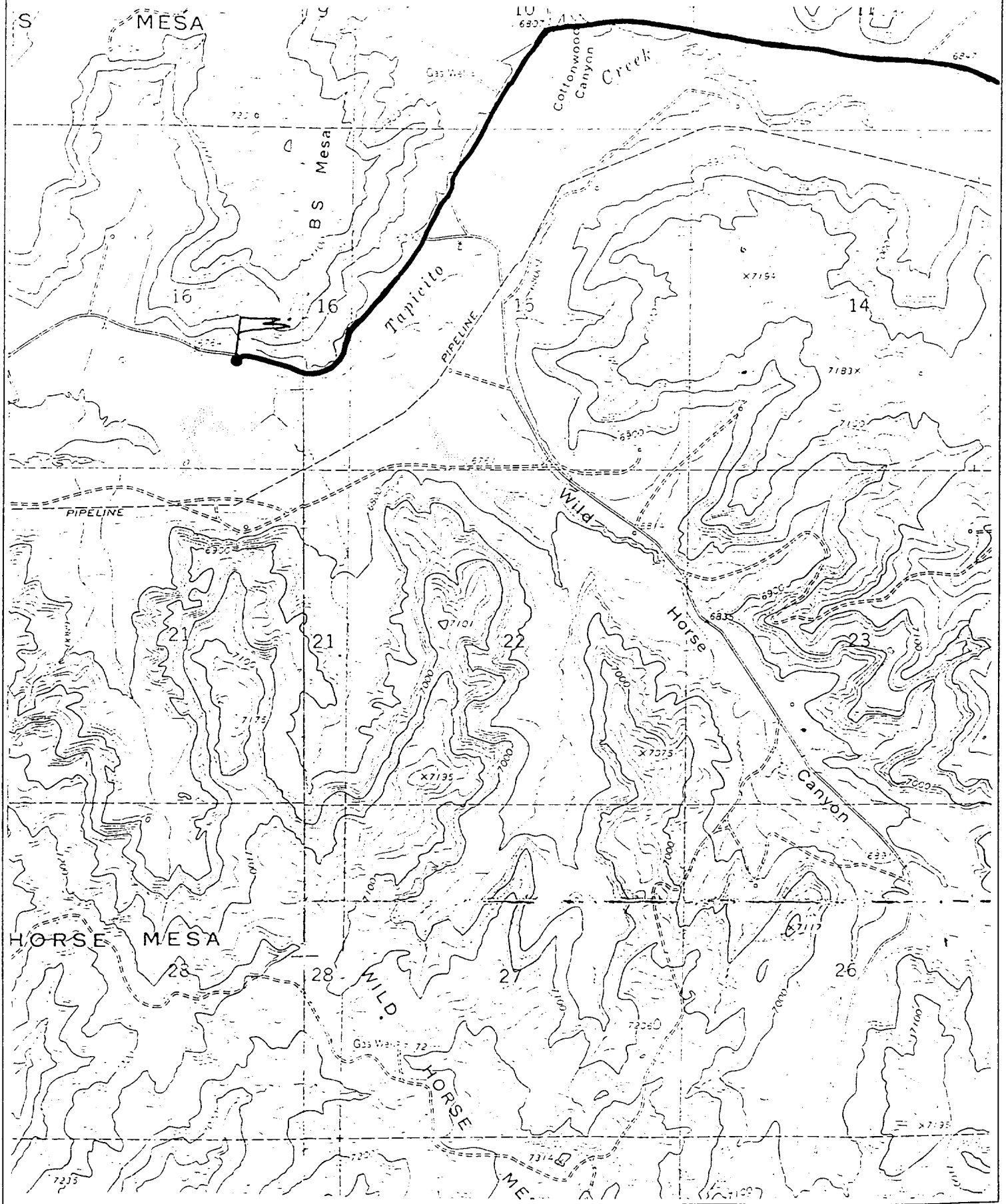
UL or lot no.	Section	Township	Range	Lot Idn	Feet from the	North/South line	Feet from the	East/West line	County
---------------	---------	----------	-------	---------	---------------	------------------	---------------	----------------	--------

12 Dedicated Acres <b>320</b>	13 Joint or Infill	14 Consolidation Code	15 Order No.
----------------------------------	--------------------	-----------------------	--------------

NO ALLOWABLE WILL BE ASSIGNED TO THIS COMPLETION UNTIL ALL INTERESTS HAVE BEEN CONSOLIDATED  
OR A NON-STANDARD UNIT HAS BEEN APPROVED BY THE DIVISION

16	5280.00'	5269.44'	9.	16	5274.72'	1675'	1845'	7 OPERATOR CERTIFICATION	
								I hereby certify that the information contained herein is true and complete to the best of my knowledge and belief.	
								Signature <i>Mike L. Mankin</i>	
								Printed Name <b>Mike L. Mankin</b>	
								Title <b>Right-Of-Way Agent</b>	
								Date <b>3-3-98</b>	
								8 SURVEYOR CERTIFICATION	
								I hereby certify that the well location shown on this plat was plotted from field notes of actual surveys made by me under my supervision and that the same is true and correct to the best of my belief.	
								Date of Survey <b>NOVEMBER 18, 1997</b>	
								Signature and Seal of Professional Surveyor <b>NEALE C. EDWARDS</b> <b>NEW MEXICO</b> <b>6857</b>	
								Certificate Number <b>6857</b>	

CONOCO, INC. JICARILLA E #9M  
1675' FSL 1845' FEL SEC 16, T26N, R4W  
RIO ARriba COUNTY, NEW MEXICO



## PROPOSED WELL PLAN OUTLINE

WELL NAME: **Jicarrilla E No. 9M**  
 LOCATION: **SEC 16, T-26N, R-4W, RIO ARRIBA CO., NM**

EST. GL = 6764  
 EST. KB = 6777

TVD IN 1000	MD	FORMATION TOPS & TYPE	DRILLING PROBLEMS	TYPE OF FORMATION EVALUATION	HOLE SIZE	CASING SIZE	DEPTH	FRAC GRAD. psi/ft	FORMATION PRESSURE PSI	MUD WT	TYPE	DAYS
0					12-1/4"	9-5/8" 36# K-55 ST&C @ 300'			NORMAL	8.4 - 8.8# SPUD MUD		1
					8-3/4"	CIRC CMT				8.4 - 9.0# GEL/POLYMER MAINTAIN MW AS LOW AS POSSIBLE		
1												
2												
3		OJAM @ 2888'	POSSIBLE WATERFLOW						432 PSI		CONTROL FLUID LOSS PRIOR TO OJAM	
		FRLO @ 3121'							380 PSI			
		PCCF @ 3422'	POSSIBLE GAS FLOW POSSIBLE LOST RETURNS POSSIBLE DIFFERENTIAL STICKING									
		LEWS @ 3583'										
4					8-3/4"	7" 23# K-55 LTC @ 3883' (special drift)						5
		CHRA @ 4360'			6-1/4"				400 PSI		AIR/ AIR MIST/ GAS	
5												
		CLFH/MV @ 5078'						0.5	457 PSI			
		MENF @ 5206'				DV TOOL SET @ 5000' (CONTINGENT ON LOST CIRCULATION) TOP OF CEMENT @ 3700'						
		PTLX @ 5570'	POSSIBLE SEVERE LOST RETURNS									
6												
		MNCS @ 6039'										
		U. GLLP @ 6714'				DV TOOL SET @ 6664' (60' - 200' ABOVE GLLP) CMT TO DV TOOL @ 5000'						
		M. GLLP @ 6938'										
7												
		TOCT @ 7151'										
		GRHN @ 7542'	POSSIBLE WATERFLOW									
		GRRS DKOT @ 7601'	POSSIBLE OVERPRESSURE	CASED HOLE LOGS	6-1/4"	4-1/2" 10.5# K-55 LTC @ 7859' UP TO 3883'		0.5	715 PSI BHP - 2500 PSI BHT = 175 deg F	ADD 2% KCl @ GRRS DKOT AIR/AIR MIST/ GAS		16
		PAGU @ 7755'	IN DEEP DAKOTA			CMT TO DV TOOL AT TOP OF GLLP						
		T.D. @ 7859'										
8												
		NOTE: PERMIT TO 8159'										

DATE 02/26/98

APPROVALS:

PREPARED: Ricky Joyce/Ted Kelly  
 DRILLING ENGINEER

[Signature]  
 RES. ENGINEER  
[Signature]  
 PROD. ENGINEER

[Signature]  
 GEOLOGIST  
[Signature]  
 DRILLING MGR.

11:47 AM