

UNITED STATES
DEPARTMENT OF THE INTERIOR
BUREAU OF LAND MANAGEMENT

APPLICATION FOR PERMIT TO DRILL, DEEPEN, OR PLUG BACK

1a. Type of Work
DRILL

RECEIVED
JUN 17 1998

5. Lease Number
Jicarilla 101
Unit Reporting Number
JICARILLA 101

1b. Type of Well
GAS

6. If Indian, All. or Tribe
Jicarilla Apache

2. Operator
**BURLINGTON
RESOURCES** 14538
Oil & Gas Company

OIL CON. DIV.
DIST. 3

7. Unit Agreement Name

3. Address & Phone No. of Operator
PO Box 4289, Farmington, NM 87499
(505) 326-9700

8. Farm or Lease Name
Jicarilla 101
9. Well Number
1R

4. Location of Well
1175' FNL, 1570' FEL
Latitude 36° 31.2, Longitude 107° 12.0

10. Field, Pool, Wildcat
Blanco MV
11. Sec., Twn, Rge, Mer. (NMPM)
15 Sec 1, T-26-N, R-4-W
API # 30-039-25894

14. Distance in Miles from Nearest Town
35 miles to Dulce

12. County
Rio Arriba
13. State
NM

15. Distance from Proposed Location to Nearest Property or Lease Line
1175'

16. Acres in Lease

17. Acres Assigned to Well
320.12 E/2

18. Distance from Proposed Location to Nearest Well, Drig, Compl, or Applied for on this Lease
700'

19. Proposed Depth
6451'

20. Rotary or Cable Tools
Rotary

21. Elevations (DF, FT, GR, Etc.)
7132' GR

22. Approx. Date Work will Start

23. Proposed Casing and Cementing Program
See Operations Plan attached

24. Authorized by: [Signature]
Regulatory/Compliance Administrator

4-27-98
Date

PERMIT NO.

APPROVAL DATE

APPROVED BY S. Steve Lischer TITLE Acting Asst. Field Manager DATE JUN 12 1998

Archaeological Report to be submitted

Threatened and Endangered Species Report to be submitted

NOTE: This format is issued in lieu of U.S. BLM Form 3160-3

Title 18 U.S.C. Section 1001, makes it a crime for any person knowingly and willfully to make to any department or agency of the United States any false, fictitious or fraudulent statements or presentations as to any matter within its jurisdiction.

District I
PO Box 1980, Hobbs, NM 88241-1980

State of New Mexico
Energy, Minerals & Natural Resources Department

Form C
Revised February 21,
Instructions on
Submit to Appropriate District Of
State Lease - 4 Co.
Fee Lease - 3 Co

District II
PO Drawer 00, Artesia, NM 88211-0719

OIL CONSERVATION DIVISION
PO Box 2088
Santa Fe, NM 87504-2088

District III
1000 Rio Brazos Rd., Aztec, NM 87410

District IV
PO Box 2088, Santa Fe, NM 87504-2088

☐ AMENDED REPORT

WELL LOCATION AND ACREAGE DEDICATION PLAT

*API Number 30-039-25894		*Pool Code 72319	*Pool Name Blanco Mesaverde
*Property Code 18557	*Property Name JICARILLA 101		*Well Number 1R
*GRID No. 14538	*Operator Name BURLINGTON RESOURCES OIL & GAS COMPANY		*Elevation 7132'

¹⁰ Surface Location

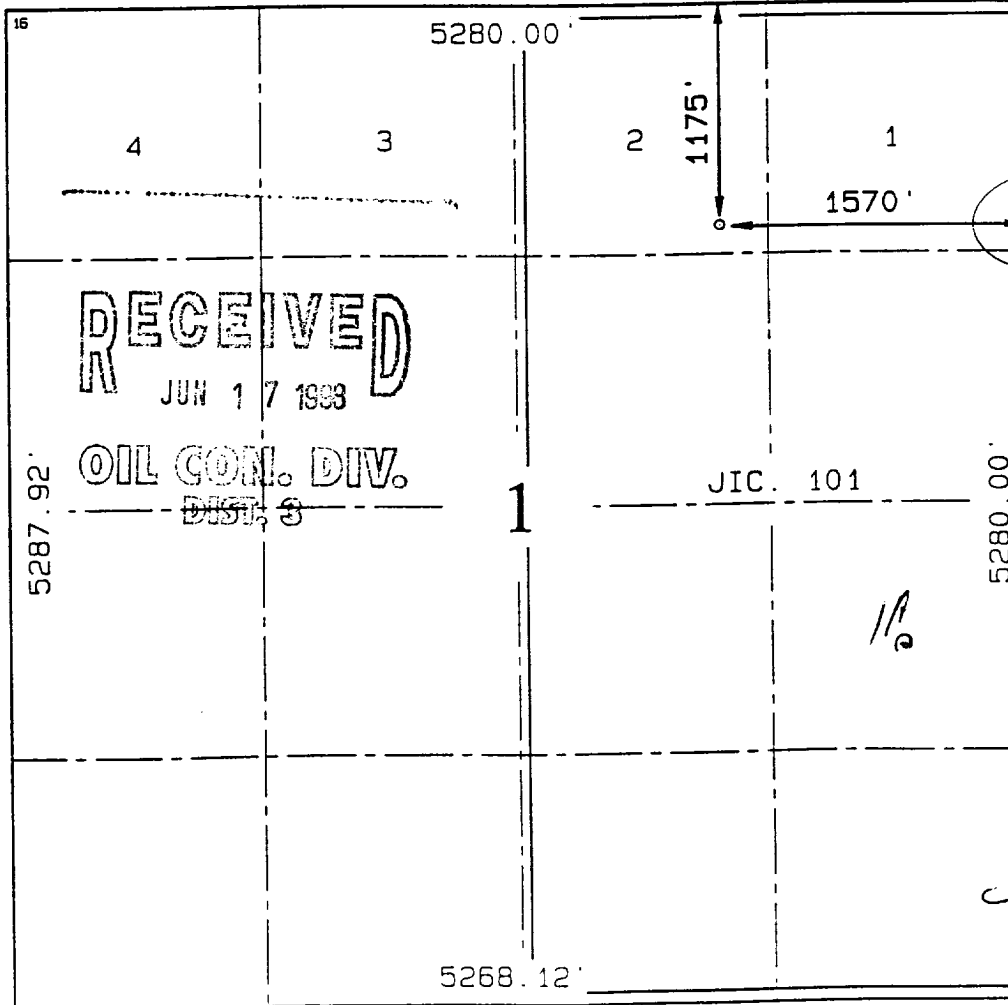
UL or lot no.	Section	Township	Range	Lot Idn	Feet from the	North/South line	Feet from the	East/West line	County
B	1	26N	4W		1175	NORTH	1570	EAST	RIO ARRIE

¹¹ Bottom Hole Location If Different From Surface

UL or lot no.	Section	Township	Range	Lot Idn	Feet from the	North/South line	Feet from the	East/West line	County

¹² Dedicated Acres E/320.12	¹³ Joint or Infill	¹⁴ Consolidation Code	¹⁵ Order No.
---	-------------------------------	----------------------------------	-------------------------

NO ALLOWABLE WILL BE ASSIGNED TO THIS COMPLETION UNTIL ALL INTERESTS HAVE BEEN CONSOLIDATED
OR A NON-STANDARD UNIT HAS BEEN APPROVED BY THE DIVISION



¹⁷ OPERATOR CERTIFICATION

I hereby certify that the information contained here is true and complete to the best of my knowledge and belief.

Peggy Bradfield
Signature

Peggy Bradfield

Printed Name

Regulatory Administrator

Title

4-27-98

Date

¹⁸ SURVEYOR CERTIFICATION

I hereby certify that the well location shown on this plat was plotted from field notes of actual surveys made by me or under my supervision, and that the same is true and correct to the best of my belief.

FEBRUARY 17, 1998

Date of Survey

Signature and Seal of Professional Surveyor

Neale C. Edwards
NEALE C. EDWARDS
NEW MEXICO
6857
Certificate Number

OPERATIONS PLAN

Well Name: Jicarilla 101 #1R
Location: 1175' FNL, 1570' FEL Section 1, T-26-N, R-4-W
Rio Arriba County, New Mexico
Latitude 36° 31.2, Longitude 107° 12.0
Formation: Blanco Mesa Verde
Elevation: 7132' GL

<u>Formation Tops:</u>	<u>Top</u>	<u>Bottom</u>	<u>Contents</u>
Surface	San Jose	3394'	aquifer
Ojo Alamo	3394'	3549'	aquifer
Kirtland	3549'	3582'	
Fruitland	3582'	3903'	
Pictured Cliffs	3903'	3995'	gas
Lewis	3995'	4392'	gas
Intermediate TD	4095'		
Huerfanito Bentonite	4392'	4866'	
Chacra	4866'	5654'	
Massive Cliff House	5654'	5753'	gas
Menefee	5753'	6051'	gas
Massive Point Lookout	6051'		gas
Total Depth	6451'		

Logging Program:

Cased hole logging - Gamma Ray Neutron
Coring/DST - none

Mud Program:

<u>Interval</u>	<u>Type</u>	<u>Weight</u>	<u>Vis.</u>	<u>Fluid Loss</u>
0- 200'	Spud	8.4-9.0	40-50	no control
200-4095'	LSND	8.4-9.0	30-60	no control
4095-6451'	Gas/Mist	n/a	n/a	n/a

300' Surface
cong

Pit levels will be visually monitored to detect gain or loss of fluid control.

Casing Program (as listed, the equivalent, or better):

<u>Hole Size</u>	<u>Depth Interval</u>	<u>Csq. Size</u>	<u>Wt.</u>	<u>Grade</u>
12 1/4"	0' - 200'	9 5/8"	32.3#	H-40
8 3/4"	0' - 4095'	7"	20.0#	J-55
6 1/4"	3995' - 6451'	4 1/2"	10.5#	J-55

★ 30'

Tubing Program:

0' - 6451' 2 3/8" 4.7# J-55

BOP Specifications, Wellhead and Tests:

Surface to Intermediate TD -

11" 2000 psi minimum double gate BOP stack (Reference Figure #1).
After nipple-up prior to drilling out surface casing, rams and casing will be tested to 600 psi for 30 minutes.

BURLINGTON RESOURCES OIL & GAS COMPANY JICARILLA 101 #1R

1175' FNL & 1570' FEL, SECTION 1, T26N, R4W, N.M.P.M.

RIO ARriba COUNTY, NEW MEXICO

APD MAP #1

NO NEW CONSTRUCTION
NWNE SECTION 1, T26N, R4W

