

UNITED STATES
DEPARTMENT OF THE INTERIOR
BUREAU OF LAND MANAGEMENT

APPLICATION FOR PERMIT TO DRILL OR DEEPEN

1a. TYPE OF WORK

DRILL ☒

DEEPEN ☐

b. TYPE OF WELL

OIL ☐
WELL

GAS ☒
WELL

OTHER

SINGLE ☐
ZONE

MULTIPLE ☒
ZONE

2. NAME OF OPERATOR

Taurus Exploration, U.S.A., Inc.

3. ADDRESS AND TELEPHONE NO.

2198 Bloomfield Highway; Farmington, NM 87401

4. LOCATION OF WELL (Report location clearly and in accordance with any State requirements)

At surface

790' FSL, 1850' FEL

At proposed prod. zone

14. DISTANCE IN MILES AND DIRECTION FROM NEAREST TOWN OR POST OFFICE*

13 Miles north of Lindrith, New Mexico

15. DISTANCE FROM PROPOSED*

LOCATION TO NEAREST

PROPERTY OR LEASE LINE, FT.

(Also to nearest drlg. unit line, if any) 790'

18. DISTANCE FROM PROPOSED LOCATION*

TO NEAREST WELL, DRILLING, COMPLETED,

OR APPLIED FOR, ON THIS LEASE, FT. 2200'

21. ELEVATIONS (Show whether DF, RT, GR, etc.)

7362' GL

23. PROPOSED CASING AND CEMENTING PROGRAM

SIZE OF HOLE	GRADE SIZE OF CASING	WEIGHT PER FOOT	SETTING DEPTH	QUANTITY OF CEMENT
12 1/4	9 5/8	36#	200-320	130 cu. ft. to circ. add to 320 to surface
8 3/4	7	20 & 23#	4220	1280 cu. ft. to circ.
6 1/4	4 1/2	10.5#	4120-6600	386 cu. ft. to circ. liner

Selectively perforate and sand water fracture to Pictured Cliffs and Mesa Verde formation. This gas is dedicated.

IN ABOVE SPACE DESCRIBE PROPOSED PROGRAM: If proposal is to deepen, give data on present productive zone and proposed new productive zone. If proposal is to drill or deepen directionally, give pertinent data on sub-surface locations and measured and true vertical depths. Give blowout preventer program, if any.

24.

SIGNED

TITLE Prod. Superintendent

DATE 7/12/98

(This space for Federal or State office use)

PERMIT NO.

APPROVAL DATE

Application approval does not warrant or certify that the applicant holds legal or equitable title to those rights in the subject lease which would entitle the applicant to conduct operations thereon.

CONDITIONS OF APPROVAL, IF ANY:

See Gen Requirements + Enviro Com's

APPROVED BY

TITLE

DATE

See Instructions On Reverse Side

Title 18 U.S.C. Section 1001, makes it a crime for any person knowingly and willfully to make to any department or agency of the United States any false, fictitious or fraudulent statements or representations as to any matter within its jurisdiction.

District I
PO Box 1980, Hobbs, NM 88241-1980
District II
PO Drawer DD, Artesia, NM 88211-0719
District III
1000 Rio Brazos Rd., Aztec, NM 87410
District IV
PO Box 2088, Santa Fe, NM 87504-2088

State of New Mexico
Energy, Minerals & Natural Resources Department

OIL CONSERVATION DIVISION
PO Box 2088
Santa Fe, NM 87504-2088

Form C-102
Revised February 21, 1994
Instructions on back
Submit to Appropriate District Office
State Lease - 4 Copies
Fee Lease - 3 Copies

☐ AMENDED REPORT

WELL LOCATION AND ACREAGE DEDICATION PLAT

1 API Number 30-039-25988		2 Pool Code 85920/72319		3 Pool Name Tapacito PC/Blanco MV	
4 Property Code 31943		5 Property Name JICARILLA 117E			6 Well Number 7A
7 OGRID No. 162928		8 Operator Name TAURUS EXPLORATION U.S.A, INC.			9 Elevation 7362

10 Surface Location

UL or lot no.	Section	Township	Range	Lot Idn	Feet from the	North/South line	Feet from the	East/West line	County

11 Bottom Hole Location If Different From Surface

UL or lot no.	Section	Township	Range	Lot Idn	Feet from the	North/South line	Feet from the	East/West line	County
0	28	26N	3W		790	SOUTH	1850	EAST	RIO ARriba

12 Dedicated Acres 160/320	13 Joint or Infill	14 Consolidation Code	15 Order No.
-------------------------------	--------------------	-----------------------	--------------

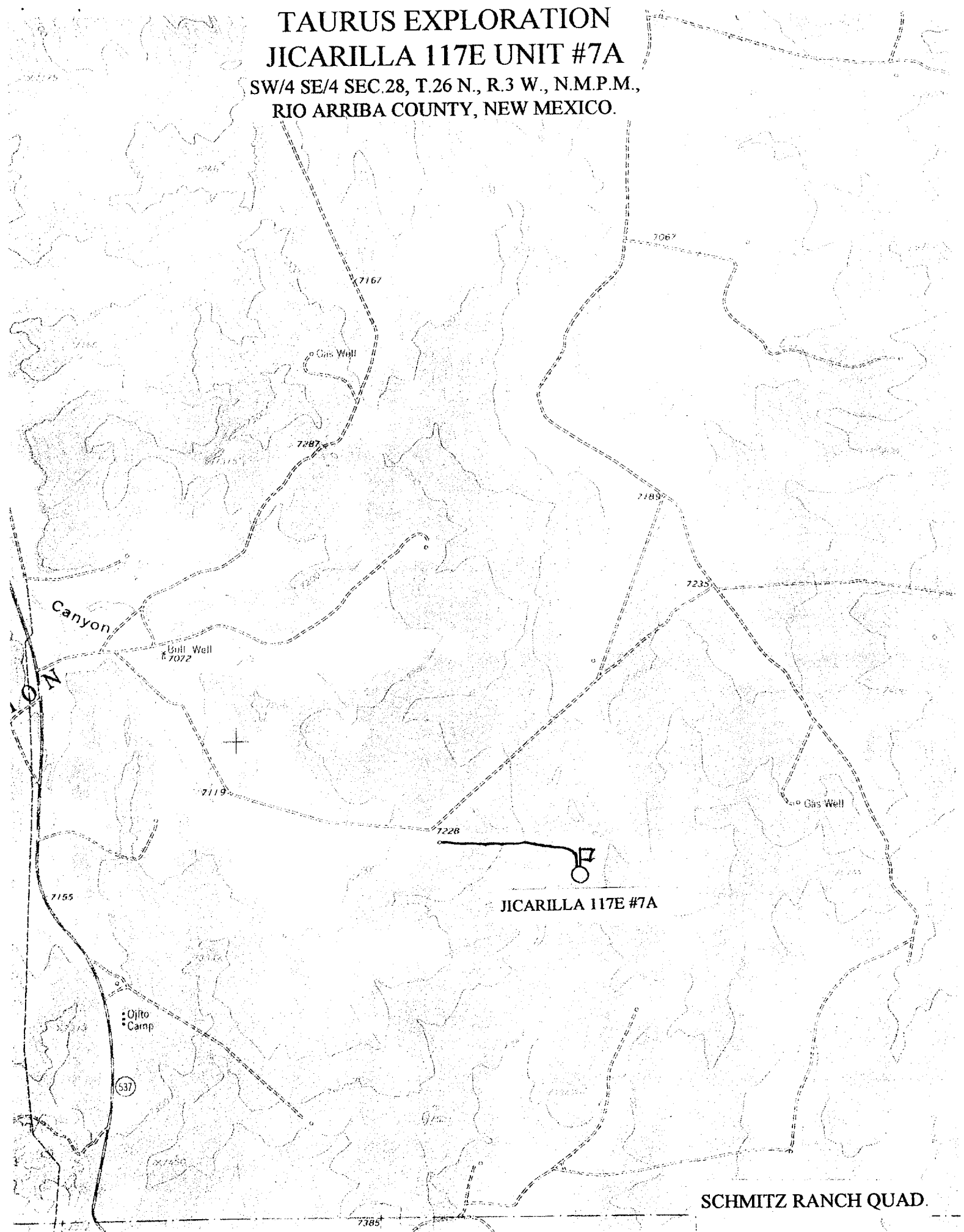
NO ALLOWABLE WILL BE ASSIGNED TO THIS COMPLETION UNTIL ALL INTERESTS HAVE BEEN CONSOLIDATED
OR A NON-STANDARD UNIT HAS BEEN APPROVED BY THE DIVISION

16 5280.0' RECEIVED SEP 14 1998 OIL CON. DIV. DIST. 3	5280.0'	70	5280.0'	17 OPERATOR CERTIFICATION I hereby certify that the information contained herein is true and complete to the best of my knowledge and belief Signature Gary W. Brink Printed Name Production Superintendent Title 7/13/98 Date	
	28				18 SURVEYOR CERTIFICATION I hereby certify that the well location shown on this plat was plotted from field notes of actual surveys made by me or under my supervision, and that the same is true and correct to the best of my belief. 6-10-98 Date of Survey Signature and Seal of Professional Surveyor: HENRY P. BROADHURST NEW MEXICO REGISTERED PROFESSIONAL SURVEYOR Certificate Number
	790'	1850'			

5280.0'

TAURUS EXPLORATION JICARILLA 117E UNIT #7A

SW/4 SE/4 SEC. 28, T. 26 N., R. 3 W., N.M.P.M.,
RIO ARriba COUNTY, NEW MEXICO.





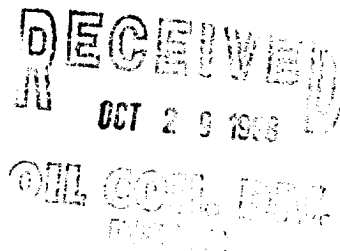
NEW MEXICO ENERGY, MINERALS
& NATURAL RESOURCES DEPARTMENT

OIL CONSERVATION DIVISION
2040 South Pacheco Street
Santa Fe, New Mexico 87505
(505) 827-7131

ADMINISTRATIVE ORDER DHC-2122

Taurus Exploration U.S.A., Inc.
2198 Bloomfield Hwy.
Farmington, New Mexico 87401

Attention: Mr. Gary W. Brink



*Jicarilla 117E No. 7A
API No. ~~N/A~~ 30-039-25988
Unit O, Section 28, Township 26 North, Range 3 West, NMPM,
Rio Arriba County, New Mexico.
Blanco-Mesaverde (Prorated Gas - 72319) and
Tapacito-Pictured Cliffs (Gas - 85920) Pools*

Dear Mr. Brink:

Reference is made to your recent application for an exception to Rule 303.A. of the Division Rules and Regulations to permit the above described well to commingle production from the subject pools in the wellbore.

It appearing that the subject well qualifies for approval for such exception pursuant to the provisions of Rule 303.C., and that reservoir damage or waste will not result from such downhole commingling, and correlative rights will not be violated thereby, you are hereby authorized to commingle the production as described above and any Division Order which authorized the dual completion and required separation of the zones is hereby placed in abeyance.

The maximum amount of gas which may be produced daily from the well shall be determined by Division Rules and Regulations or by the gas allowable for each respective prorated pool as printed in the Division's San Juan Basin Gas Proration Schedule.

The applicant shall consult with the supervisor of the Aztec District Office of the Division upon completion and testing of the well in order to establish a fixed allocation of production from each of the commingled zones. Upon approval by the Division's Aztec District Office, the applicant shall submit the allocation formula to the Santa Fe Office of the Division.

REMARKS: The operator shall notify the Aztec District Office of the Division upon implementation of the commingling process.

Pursuant to Rule 303.H., the commingling authority granted herein may be rescinded by the Division Director if conservation is not being best served by such commingling.

Approved at Santa Fe, New Mexico on this 22nd day of October, 1998.

STATE OF NEW MEXICO
OIL CONSERVATION DIVISION

A handwritten signature in black ink, appearing to read "Lori Wrotenbery", followed by a stylized flourish or set of initials.

LORI WROTENBERY
Director

S E A L

LW/DRC

cc: Oil Conservation Division - Aztec /
Bureau of Land Management-Farmington