

UNITED STATES
DEPARTMENT OF THE INTERIOR
BUREAU OF LAND MANAGEMENT

APPLICATION FOR PERMIT TO DRILL, DEEPEN, OR PLUG BACK

99 JUL -8 11:04
1a. Type of Work
OIL ALBUQUERQUE, N.M.

5. Lease Number
Jicarilla Contract 150
Unit Reporting Number

1b. Type of Well
GAS

6. If Indian, All. or Tribe
Jicarilla Apache

2. Operator
BURLINGTON
RESOURCES Oil & Gas Company

7. Unit Agreement Name

3. Address & Phone No. of Operator
PO Box 4289, Farmington, NM 87499
(505) 326-9700

8. Farm or Lease Name
Jicarilla 150

9. Well Number
4B

4. Location of Well
1730' FSL, 665' FWL
Latitude 36° 29.9, Longitude 107° 20.1

10. Field, Pool, Wildcat
Blanco Mesaverde

11. Sec., Twn, Rge, Mer. (NMPM)
L Sec. 11, T-26-N, R-5-W
API # 30-039- 26212

14. Distance in Miles from Nearest Town
15 Miles from Gobernador

12. County
Rio Arriba

13. State
NM

15. Distance from Proposed Location to Nearest Property or Lease Line
665'

16. Acres in Lease

17. Acres Assigned to Well
320 W/2

18. Distance from Proposed Location to Nearest Well, Drig, Compl, or Applied for on this Lease
1500'

19. Proposed Depth
6344'

20. Rotary or Cable Tools
Rotary

21. Elevations (DF, FT, GR, Etc.)
7129 GR

22. Approx. Date Work will Start

23. Proposed Casing and Cementing Program
See Operations Plan attached

24. Authorized by: Mary Shaahid
Regulatory/Compliance Administrator

Date 6-30-99

PERMIT NO. _____

APPROVAL DATE _____

APPROVED BY S/Joan R. Resnick

TITLE Asst. Field Mgr

DATE JUL 30 1999

Archaeological Report to be submitted

Threatened and Endangered Species Report to be submitted

NOTE: This format is issued in lieu of U.S. BLM Form 3160-3

Title 18 U.S.C. Section 1001, makes it a crime for any person knowingly and willfully to make to any department or agency of the United States any false, fictitious or fraudulent statements or presentations as to any matter within its jurisdiction.

OK

District I
PO Box 1980, Hobbs, NM 88241-1980

District II
PO Drawer 00, Artesia, NM 88211-0719

District III
1000 Rio Brazos Rd., Aztec, NM 87410

District IV
PO Box 2088, Santa Fe, NM 87504-2088

State of New Mexico
Energy, Minerals & Natural Resources Department

OIL CONSERVATION DIVISION
PO Box 2088
Santa Fe, NM 87504-2088

Form C-1C
Revised February 21, 1995
Instructions on back
Submit to Appropriate District Office
State Lease - 4 Copies
Fee Lease - 3 Copies

☐ AMENDED REPORT

WELL LOCATION AND ACREAGE DEDICATION PLAT

*API Number 30-039-		*Pool Code 72319	*Pool Name Blanco Mesaverde
*Property Code 16344	*Property Name JICARILLA 150		*Well Number 48
*OGRID No. 14538	*Operator Name BURLINGTON RESOURCES OIL & GAS COMPANY		*Elevation 7129'

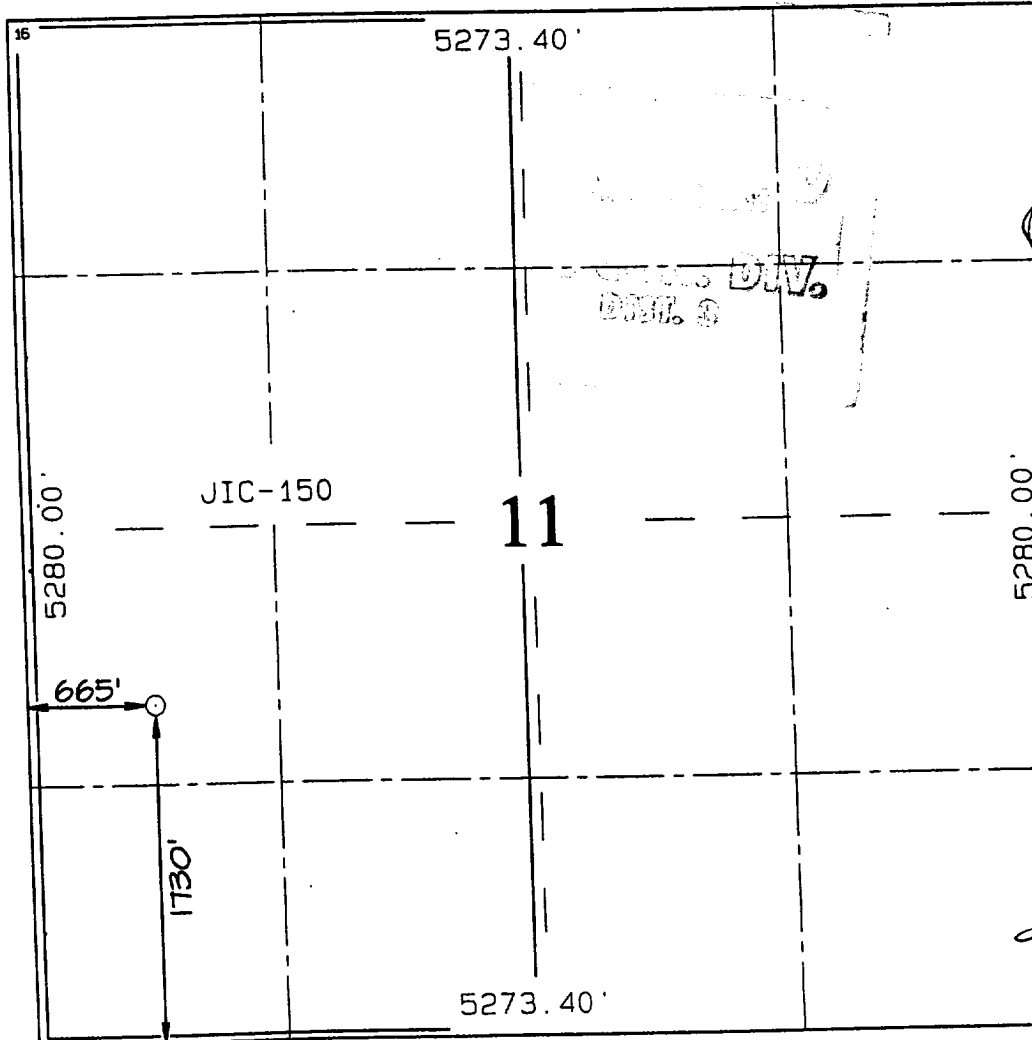
¹⁰ Surface Location

UL or lot no.	Section	Township	Range	Lot Idn	Feet from the	North/South line	Feet from the	East/West line	County
L	11	26N	5W		1730	SOUTH	665	WEST	RIO ARriba

¹¹ Bottom Hole Location If Different From Surface

UL or lot no.	Section	Township	Range	Lot Idn	Feet from the	North/South line	Feet from the	East/West line	County
¹² Dedicated Acres W/320		¹³ Joint or Infill		¹⁴ Consolidation Code		¹⁵ Order No.			

NO ALLOWABLE WILL BE ASSIGNED TO THIS COMPLETION UNTIL ALL INTERESTS HAVE BEEN CONSOLIDATED OR A NON-STANDARD UNIT HAS BEEN APPROVED BY THE DIVISION



¹⁷ OPERATOR CERTIFICATION

I hereby certify that the information contained herein is true and complete to the best of my knowledge and belief.

Signature

Peggy Bradfield

Printed Name

Regulatory Administrator

Title

Date

6-30-99

¹⁸ SURVEYOR CERTIFICATION

I hereby certify that the well location shown on this was plotted from field notes of actual surveys made by or under my supervision, and that the same is true and correct to the best of my belief.

JANUARY 12, 1999

Date of Survey

Signature and Seal of Professional Surveyor

NEALE C. EDWARDS
NEW MEXICO
6857
Professional Surveyor
Certificate Number

OPERATIONS PLAN

Well Name: Jicarilla 150 #4B
Surface Location: 1730' FSL, 665' FWL, Section 11, T-26-N, R-5-W
Rio Arriba County, New Mexico
Latitude 36° 29.9, Longitude 107° 20.1

Formation: Blanco Mesa Verde
Elevation: 7129' GL

<u>Formation Tops:</u>	<u>Top</u>	<u>Bottom</u>	<u>Contents</u>
Surface	San Jose	3140'	aquifer
Ojo Alamo	3140'	3321'	aquifer
Kirtland	3321'	3355'	gas
Fruitland	3355'	3741'	gas
Pictured Cliffs	3741'	3833'	gas
Lewis	3833'	4225'	gas
Intermediate TD	3933'		
Mesa Verde	4225'	4681'	gas
Chacra	4681'	5410'	gas
Massive Cliff House	5410'	5532'	gas
Menefee	5532'	5944'	gas
Point Lookout	5944'		gas
Total Depth	6344'		

Logging Program:

Cased hole logging - Gamma Ray, Cement bond from surface to TD
Mud Logs/Coring/DST - none

Mud Program:

<u>Interval- MD</u>	<u>Type</u>	<u>Weight</u>	<u>Vis.</u>	<u>Fluid Loss</u>
0- 350'	Spud	8.4-9.0	40-50	no control
350- 3933'	LSND	8.4-9.0	30-60	no control
3933- 6344'	Air/Mist	n/a	n/a	n/a

Pit levels will be visually monitored to detect gain or loss of fluid control.

Casing Program (as listed, the equivalent, or better):

<u>Hole Size</u>	<u>Measured Depth</u>	<u>Csg Size</u>	<u>Weight</u>	<u>Grade</u>
12 1/4"	0' - 350'	9 5/8"	32.3#	H-40
8 3/4"	0' - 3933'	7"	20.0#	J-55
6 1/4"	3833' - 6344'	4 1/2"	10.5#	J-55

Tubing Program: 0' -6344' 2 3/8" 4.7# J-55

BOP Specifications, Wellhead and Tests:

Surface to Intermediate TD -

11" 2000 psi minimum double gate BOP stack (Reference Figure #1).
After nipple-up prior to drilling out surface casing, rams and casing will be tested to 600 psi for 30 minutes.

BURLINGTON RESOURCES OIL & GAS COMPANY JICARILLA 150 #4B

1730' FSL & 665' FWL, SECTION II, T26N, R5W, N.M.P.M.
RIO ARriba COUNTY, NEW MEXICO

APD MAP #1

1200' NEW JICARILLA APACHE CONSTRUCTION
800' SW/SW SECTION II, T26N, R5W
400' NW/SW SECTION II, T26N, R5W.

