

UNITED STATES
DEPARTMENT OF THE INTERIOR
BUREAU OF LAND MANAGEMENT

APPLICATION FOR PERMIT TO DRILL OR DEEPEN

1A. TYPE OF WORK
DRILL ☒ DEEPEN ☐

B. TYPE OF WELL
OIL WELL ☐ GAS WELL ☒ OTHER ☐

2. NAME OF OPERATOR
Louis Dreyfus Natural Gas Corporation

3. ADDRESS AND TELEPHONE NO.
(405) 749-5263
14000 Quail Springs Parkway, Suite 600, Oklahoma City, OK 73134

4. LOCATION OF WELL (Report location clearly and in accordance with any State requirements.)*
At surface
1156' FNL & 1307' FWL (Lot 4, UL D)
At proposed prod. zone

14. DISTANCE IN MILES AND DIRECTION FROM NEAREST TOWN OR POST OFFICE*
17 Miles Southwest of Blanco, NM

15. DISTANCE FROM PROPOSED*
LOCATION TO NEAREST
PROPERTY OR LEASE LINE, FT.
(Also to nearest drlg. unit line, if any)
1156'

16. NO. OF ACRES IN LEASE
320

17. NO. OF ACRES ASSIGNED
TO THIS WELL
320

18. DISTANCE FROM PROPOSED LOCATION*
TO NEAREST WELL, DRILLING, COMPLETED,
OR APPLIED FOR, ON THIS LEASE, FT.
2375'

19. PROPOSED DEPTH
6850'

20. ROTARY OR CABLE TOOLS
R

21. ELEVATIONS (Show whether DF, RT, GR, etc.)
6026' GR

22. APPROX. DATE WORK WILL START*
8-15-00

5. LEASE DESIGNATION AND SERIAL NO.
NMSF - 079162

6. IF INDIAN, ALLOTTEE OR TRIBE NAME

7. UNIT AGREEMENT NAME

8. FARMOR LEASE NAME, WELL NO.
Fedem 98 Pk 5950
MKL #11 MU

9. AP WELL NO.
30-039-26506

10. FIELD AND POOL, OR WILDCAT
Basin Dakota/Blanco Mesa

11. SEC., T., R., M., OR BLK.
AND SURVEY OR AREA
Verde
0 Sec. 6-26N-7W

12. COUNTY OR PARISH
Rio Arriba

13. STATE
NM

17. NO. OF ACRES ASSIGNED
TO THIS WELL
W/322.4 MU
320 N/323.331 OK

22. APPROX. DATE WORK WILL START*
8-15-00

This action is subject to technical and
procedural review pursuant to 43 CFR 3160.3,
and approval pursuant to 43 CFR 3160.4.

PROPOSED CASING AND CEMENTING PROGRAM		DRILLING OPERATIONS AUTHORIZED ARE SUBJECT TO COMPLIANCE WITH ATTACHED GENERAL REQUIREMENTS	
SIZE OF HOLE	WEIGHT PER FOOT	SETTING DEPTH	QUANTITY OF CEMENT
17 1/2"	13 3/8" H40	48#	200'
11"	8 5/8" K55	32#	2300'
7 7/8"	5 1/2" LT&C	11.6#	6850'
			370 sx - Surface
			650 sx - Surface
			985 sx - Est TOC 2000'

- A. Drill 17 1/2" hole to 200'. Set 13 3/8" surface csg at 200' with 370 sxs cement.
- B. Drill 12" hole to 2300'. Set 8 5/8" intermediate csg at 2300'. Cement with 450 sxs 35:65 Poz C tail in with 200 sxs Class C.
- C. Drill 7 7/8" hole to 6850'. Set 5 1/2" production csg at 6850'. Cement with 910 sxs Super C Modified, tail in with 75 sxs Class C.

IN ABOVE SPACE DESCRIBE PROPOSED PROGRAM: If proposal is to deepen, give data on present productive zone and proposed new productive zone. If proposal is to drill or deepen directionally, give pertinent data on subsurface locations and measured and true vertical depths. Give blowout preventer program, if any.

24. SIGNED Carla Christian TITLE Regulatory Technician DATE 6/30/00

(This space for Federal or State office use)

PERMIT NO. _____ APPROVAL DATE _____

Application approval does not warrant or certify that the applicant holds legal or equitable title to those rights in the subject lease which would entitle the applicant to conduct operations thereon.
CONDITIONS OF APPROVAL, IF ANY:

/s/ Jim Lovato

SEP 13 2000

APPROVED BY _____ TITLE _____ DATE _____

*See Instructions On Reverse Side

District I
PO Box 1980, Hobbs, NM 88241-1980
District II
811 South First, Artesia, NM 88210
District III
1000 Rio Brazos Rd., Aztec, NM 87410
District IV
2040 South Pacheco, Santa Fe, NM 87505

State of New Mexico
Energy, Minerals & Natural Resources Department

OIL CONSERVATION DIVISION
2040 South Pacheco
Santa Fe, NM 87505

Form C-102
Revised October 18, 1994
Instructions on back
Submit to Appropriate District Office
State Lease - 4 Copies
Fee Lease - 3 Copies

☐ AMENDED REPORT

WELL LOCATION AND ACREAGE DEDICATION PLAT

1. Well Number 30-039-26506		2. Pool Code 71599		3. Pool Name Basin (Dakota)	
4. Property 5950		5. Property Name MKL Federal 16			6. Well Number 11
7. OGRID No. 025773		8. Operator Name LOUIS DREYFUS			9. Elevation 6026'

10. Surface Location

UL or lot no.	Section	Township	Range	Lot Idn	Feet from the	North/South line	Feet from the	East/West line	County
D	6	26N	7W		1156'	NORTH	1307'	WEST	RIO ARriba

11. Bottom Hole Location If Different From Surface

UL or lot no.	Section	Township	Range	Lot Idn	Feet from the	North/South line	Feet from the	East/West line	County

12. Dedicated Acres	13. Joint or Infill	14. Consolidation Code	15. Order No.
323.31 320 N/A	Infill		

NO ALLOWABLE WILL BE ASSIGNED TO THIS COMPLETION UNTIL ALL INTERESTS HAVE BEEN CONSOLIDATED OR A NON-STANDARD UNIT HAS BEEN APPROVED BY THE DIVISION

16 N89°19'W 5277.36' 100% Federal Mineral BLM SF-079162 F&O 6-32 Section 6				17 OPERATOR CERTIFICATION I hereby certify that the information contained herein is true and complete to the best of my knowledge and belief Carla Christian Signature Carla Christian Printed Name Regulatory Technician Title 6/30/00 Date	
18 SURVEYOR CERTIFICATION I hereby certify that the well location shown on this plat was plotted from field notes of actual surveys made by me or under my supervision, and that the same is true and correct to the best of my belief. 10/25/99 Date of Survey Signature and Seal of Professional Surveyer: HENRY P. BROADHURST NEW MEXICO REGISTERED PROFESSIONAL SURVEYOR 11232					

District I
P.O. Box 1980, Hobbs, NM 88241-1980
District II
811 South First, Artesia, NM 88210
District III
1000 Rio Brazos Rd., Aztec, NM 87410
District IV
2040 South Pacheco, Santa Fe, NM 87505

State of New Mexico
Energy, Minerals & Natural Resources Department

OIL CONSERVATION DIVISION
2040 South Pacheco
Santa Fe, NM 87505

Form C-102
Revised October 18, 1994
Instructions on back
Submit to Appropriate District Office
State Lease - 4 Copies
Fee Lease - 3 Copies

☐ AMENDED REPORT

WELL LOCATION AND ACREAGE DEDICATION PLAT

* API Number 30-039-26506		* Pool Code 72319	* Pool Name Blanco (Mesa Verde)
* Property Code 5962	* Property Name MKL		* Well Number 11
* OGRID No. 025773	* Operator Name LOUIS DREYFUS		* Elevation 6026'

10 Surface Location

UL or lot no.	Section	Township	Range	Lot Idn	Feet from the	North/South line	Feet from the	East/West line	County
D	6	26N	7W		1156'	NORTH	1307'	WEST	RIO ARriba

11 Bottom Hole Location If Different From Surface

UL or lot no.	Section	Township	Range	Lot Idn	Feet from the	North/South line	Feet from the	East/West line	County

12 Dedicated Acres 322.4	13 Joint or Infill Infill	14 Consolidation Code	15 Order No.
-----------------------------	------------------------------	-----------------------	--------------

NO ALLOWABLE WILL BE ASSIGNED TO THIS COMPLETION UNTIL ALL INTERESTS HAVE BEEN CONSOLIDATED OR A NON-STANDARD UNIT HAS BEEN APPROVED BY THE DIVISION

16 4 1156' 1307'	N89°19'W 3	2	5277.36' 1
5175.72' 100% Federal Mineral 5 BLM SF-079162 2200			5044.38'
6 420	Section 6		
N00°08'E 7 S89°19'W			N02°25'E 5509.02'

17 OPERATOR CERTIFICATION
I hereby certify that the information contained herein is true and complete to the best of my knowledge and belief

Carla Christian
Signature
Carla Christian
Printed Name
Regulatory Technician
Title
June 30, 2000
Date

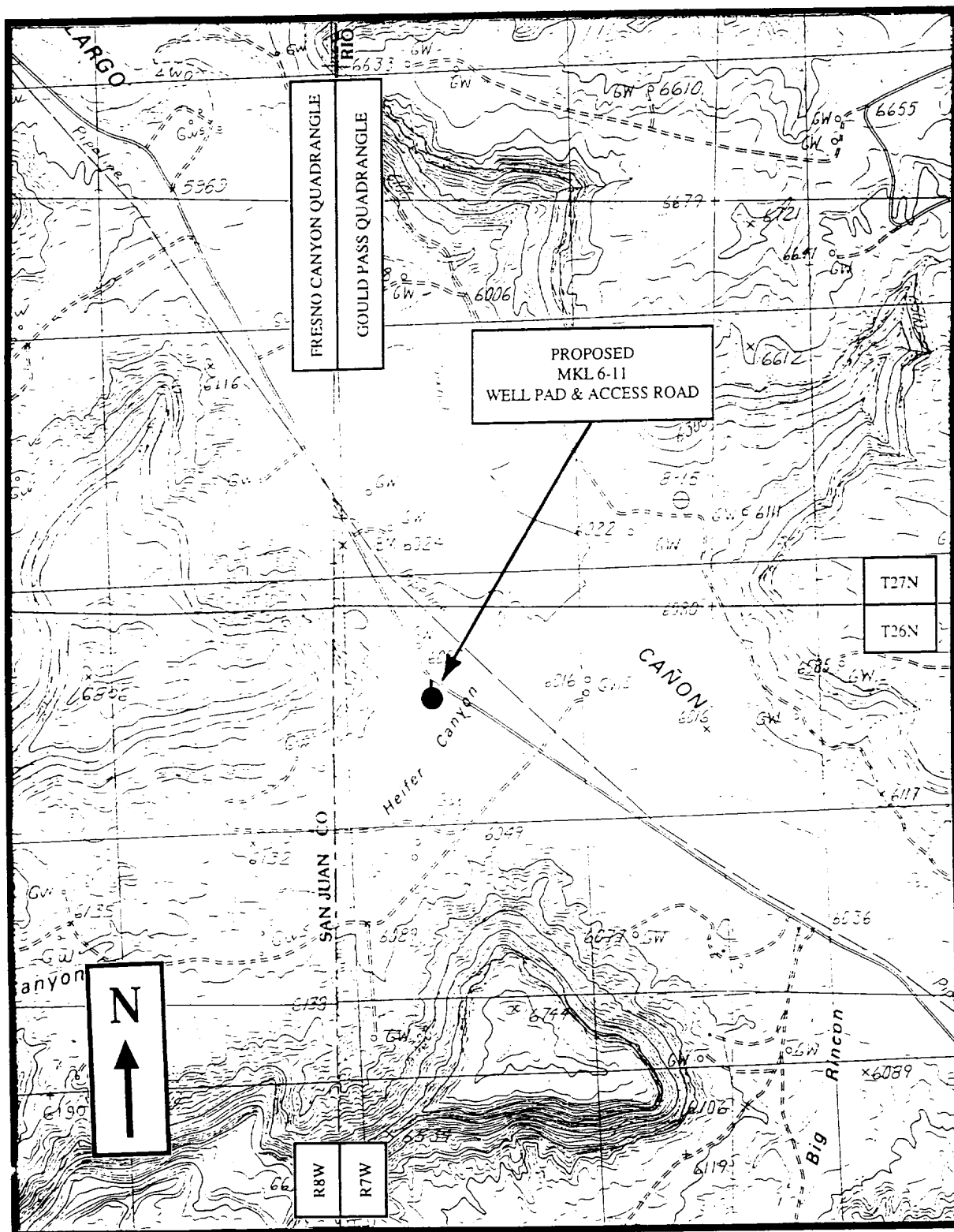
18 SURVEYOR CERTIFICATION
I hereby certify that the well location shown on this plat was plotted from field notes of actual surveys made by me or under my supervision, and that the same is true and correct to the best of my belief.

10/25/99
Date of Survey
Signature and Seal of Professional Surveyor:
HENRY P. BROADHURST
NEW MEXICO
REGISTERED PROFESSIONAL SURVEYOR
Certificate Number 11322

USGS 7.5 MINUTE
TOPOGRAPHIC
SURVEY MAP

EXHIBIT "B"

GOULD PASS QUADRANGLE
SAN JUAN COUNTY, NEW MEXICO



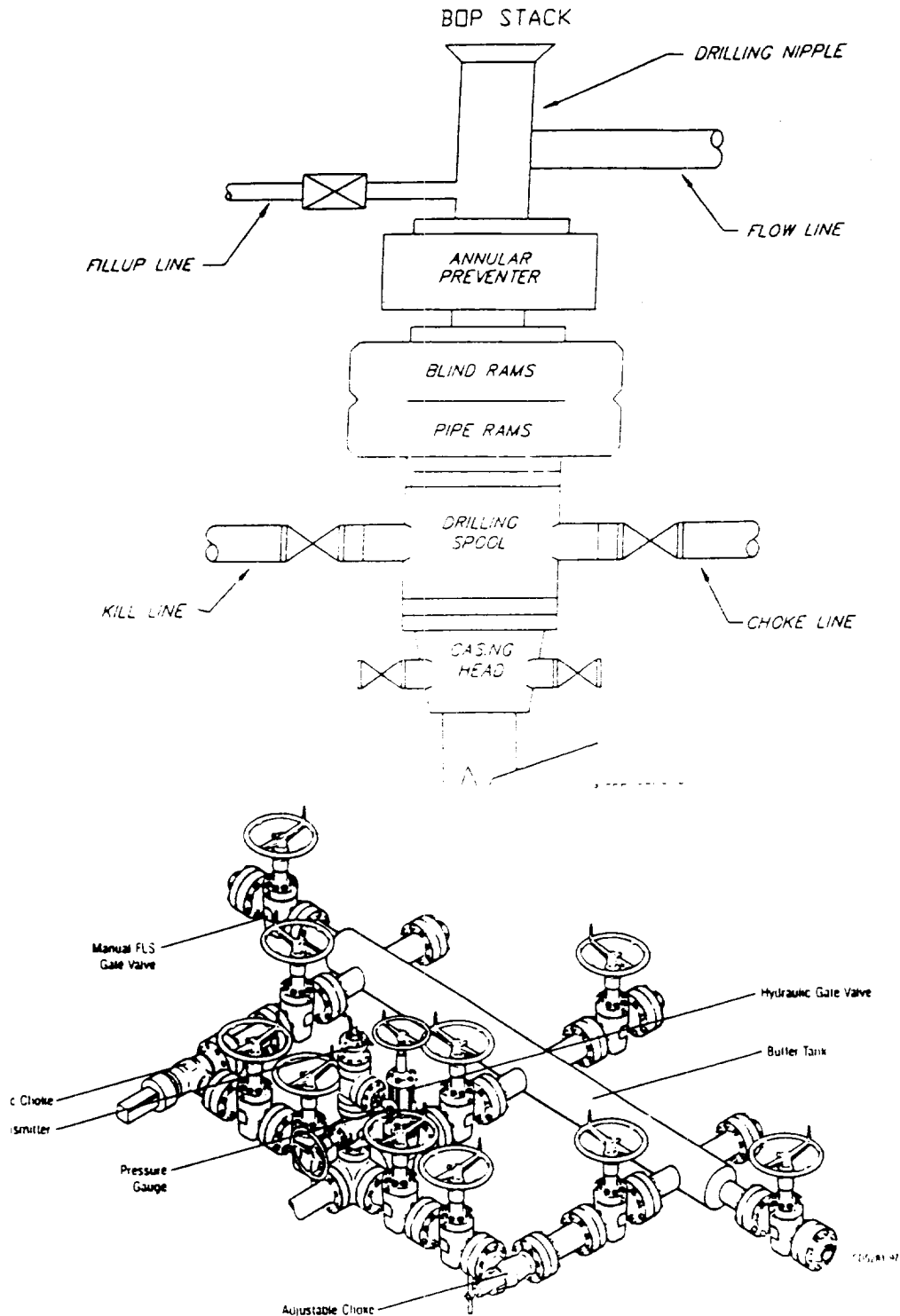
QUAD LOCATION
NEW MEXICO

LOUIS DREYFUS NATURAL GAS CORPORATION
PROPOSED MKL 6-11 WELL PAD & ACCESS ROAD
T26N, R7W, S6

FIGURE 2
PROJECT AREA MAP

Exhibit 6

TYPICAL 5,000 p.s.i. BLOWOUT PREVENTER & CHOKE MANIFOLD SCHEMATIC



Typical Choke Manifold Designed for Land Drilling Applications