

UNITED STATES  
DEPARTMENT OF THE INTERIOR  
BUREAU OF LAND MANAGEMENT

APPLICATION FOR PERMIT TO DRILL OR DEEPEN

1a. TYPE OF WORK

DRILL ☒

DEEPEN ☐

b. TYPE OF WELL

OIL  
WELL ☐

GAS  
WELL ☒

OTHER

SINGLE  
ZONE ☐

MULTIPLE  
ZONE ☒

2. NAME OF OPERATOR

ENERGEN RESOURCES CORPORATION

3. ADDRESS AND TELEPHONE NO.

2198 Bloomfield Highway; Farmington, NM 87401

4. LOCATION OF WELL (Report location clearly and in accordance with any State requirements.)

At surface

790' FSL, 865' FWL

At proposed prod. zone

14. DISTANCE IN MILES AND DIRECTION FROM NEAREST TOWN OR POST OFFICE\*

20 Miles Northwest of Lindrith, NM

15. DISTANCE FROM PROPOSED\*

LOCATION TO NEAREST  
PROPERTY OR LEASE LINE, FT.

(Also to nearest drlg. unit line, if any) 790'

18. DISTANCE FROM PROPOSED LOCATION\*  
TO NEAREST WELL, DRILLING, COMPLETED,  
OR APPLIED FOR, ON THIS LEASE, FT.

800'

21. ELEVATIONS (Show whether DF, RT, GR, etc.)

7192 GL

23. PROPOSED CASING AND CEMENTING PROGRAM

SIZE OF HOLE	GRADE SIZE OF CASING	WEIGHT PER FOOT	SETTING DEPTH	QUANTITY OF CEMENT
13-3/8"	10-3/4"	43.5#	200'	138 cu. ft., circ. surface
9-7/8"	7-5/8"	26.4#	4254'	1371 cu. ft., circ. surface
6-3/4"	5-1/2"	17#	8374'	535 cu. ft., to intermediate casing

It is intended to selectively preforate and fracture both the Mesaverde and Dakota zones.

NOTE: THIS IS A PIPELINE ROW EXPEDITED APD.

IN ABOVE SPACE DESCRIBE PROPOSED PROGRAM: If proposal is to deepen, give data on present productive zone and proposed new productive zone. If proposal is to drill or deepen directionally, give pertinent data on subsurface locations and measured and true vertical depths. Give blowout preventer program, if any.

24.

SIGNED

TITLE Production Superintendent

DATE

(This space for Federal or State office use)

PERMIT NO.

APPROVAL DATE

Application approval does not warrant or certify that the applicant holds legal or equitable title to those rights in the subject lease which would entitle the applicant to conduct operations thereon.

CONDITIONS OF APPROVAL, IF ANY:

APPROVED BY

David H. Sitzler

TITLE

Acting Asst. Field Mgr.

DATE

NOV 22 2000

\*See Instructions On Reverse Side

Title 18 U.S.C. Section 1001, makes it a crime for any person knowingly and willfully to make to any department or agency of the United States any false, fictitious or fraudulent statements or representations as to any matter within its jurisdiction.

District I  
PO Box 1980, Hobbs, NM 88241-1980

State of New Mexico  
Energy, Minerals & Natural Resources Department

Form C-102  
Revised February 21, 1994

District II  
PO Drawer 00, Artesia, NM 88211-0719

OIL CONSERVATION DIVISION  
PO Box 2088  
Santa Fe, NM 87504-2088

Instructions on back  
Submit to Appropriate District Office  
State Lease - 4 Copies  
Fee Lease - 3 Copies

District III  
1000 Rio Brazos Rd., Aztec, NM 87410

District IV  
PO Box 2088, Santa Fe, NM 87504-2088

☐ AMENDED REPORT

WELL LOCATION AND ACREAGE DEDICATION PLAT

*API Number 30039-26570		*Pool Code 72319 / 71599	*Pool Name Blanco Mesaverde / Basin Dakota
*Property Code 21944	*Property Name JICARILLA 119N		*Well Number 10M
*OGRID No. 162928	*Operator Name ENERGEN RESOURCES CORPORATION		*Elevation 7192'

<sup>10</sup> Surface Location

UL or lot no. M	Section 7	Township 26N	Range 4W	Lot Idn	Feet from the 790	North/South line SOUTH	Feet from the 865	East/West line WEST	County RIO ARriba
--------------------	--------------	-----------------	-------------	---------	----------------------	---------------------------	----------------------	------------------------	----------------------

<sup>11</sup> Bottom Hole Location If Different From Surface

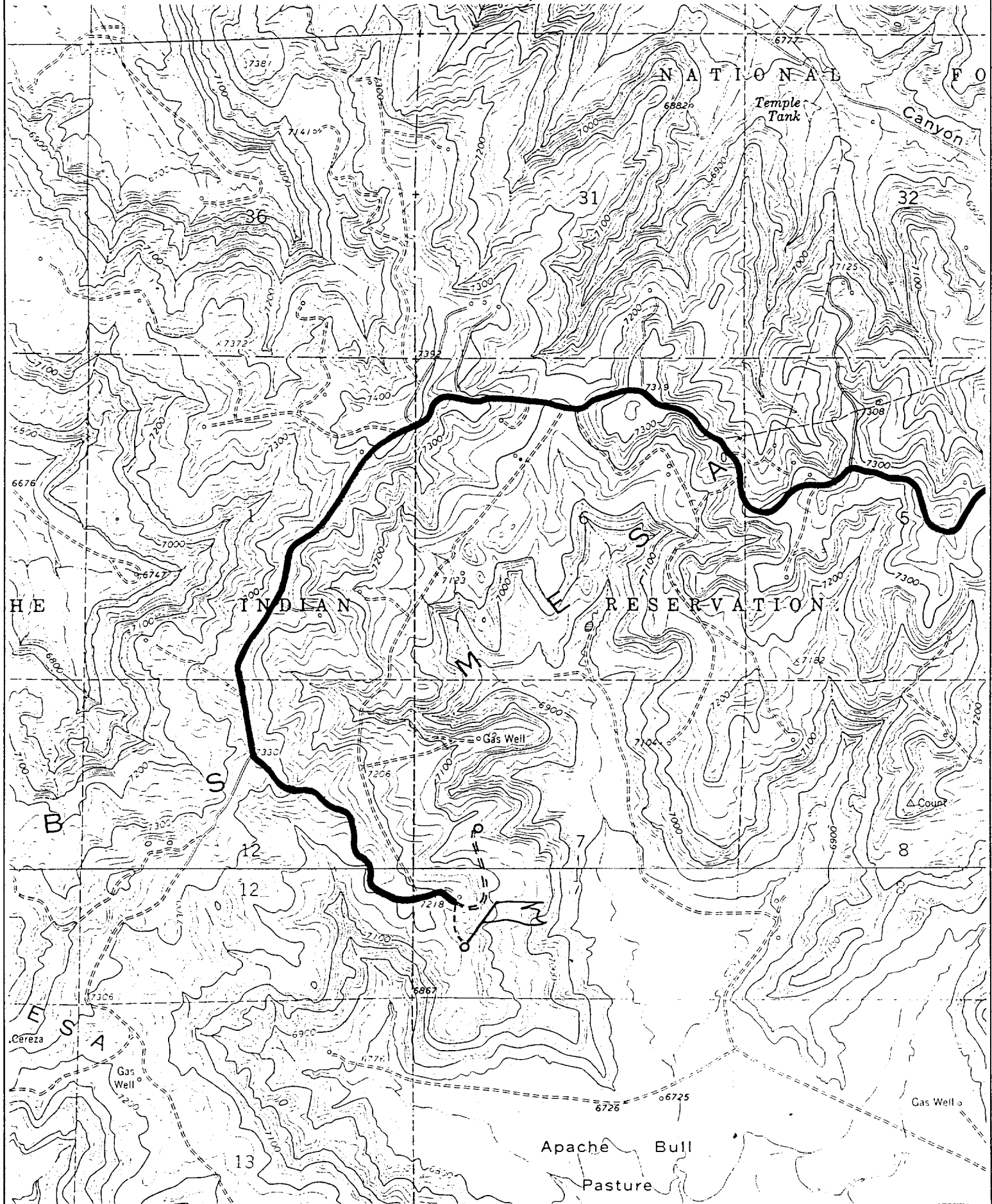
UL or lot no.	Section	Township	Range	Lot Idn	Feet from the	North/South line	Feet from the	East/West line	County
<sup>12</sup> Dedicated Acres 329.12 <i>w/2</i>					<sup>13</sup> Joint or Infill	<sup>14</sup> Consolidation Code	<sup>15</sup> Order No.		

NO ALLOWABLE WILL BE ASSIGNED TO THIS COMPLETION UNTIL ALL INTERESTS HAVE BEEN CONSOLIDATED  
OR A NON-STANDARD UNIT HAS BEEN APPROVED BY THE DIVISION

			<p><sup>17</sup> OPERATOR CERTIFICATION I hereby certify that the information contained herein is true and complete to the best of my knowledge and belief.</p> <p>Signature Gary Brink Printed Name Production Superintendant Title Date 9/26/00</p>	
<p><sup>18</sup> SURVEYOR CERTIFICATION I hereby certify that the well location shown on this plat was plotted from field notes of actual surveys made by me or under my supervision, and that the same is true and correct to the best of my belief.</p> <p>JULY 27, 2000 Date of Survey</p> <p>Signature and Seal of Professional Surveyor </p> <p>Certificate No. per 6857</p>				

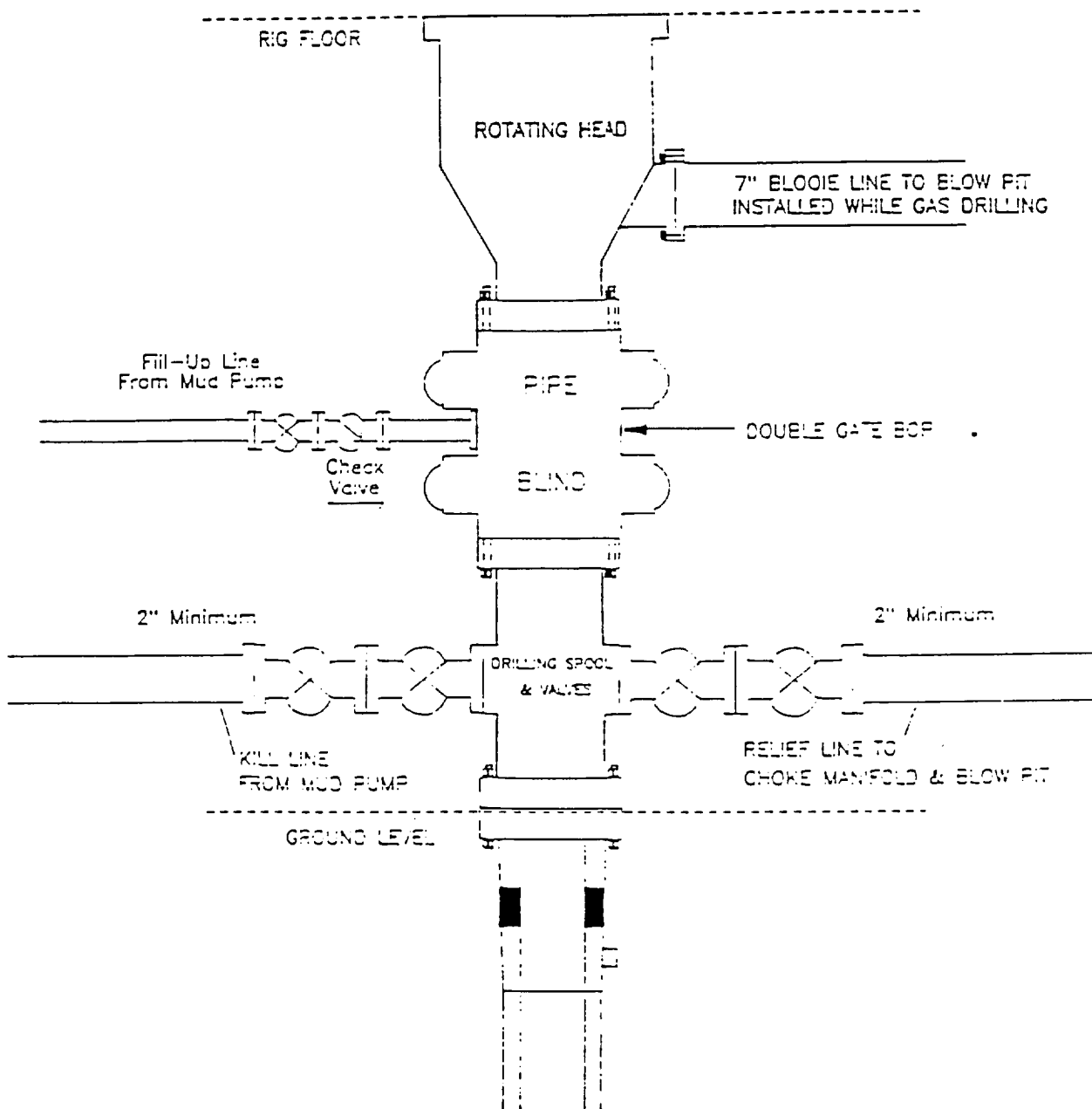
ENERGEN RESOURCES CORPORATION JICARILLA 119N #10M

790' FSL & 865' FWL, SECTION 7, T26N, R4W, N.M.P.M.  
RIO ARriba COUNTY, NEW MEXICO



# ENERGEN RESOURCES CORPORATION

## Mesa Verde / Dakota Well BOP Configuration



Minimum BOP installation for a Mesa Verde well from Surface to Total Depth. 11" Bore, 2000psi minimum working pressure double gate BOP to be equipped with blind and pipe rams. A Schaffer Type 50 or equivalent rotating head to be installed on the top of the BOP. All equipment is 2000psi working pressure or greater.

Figure #1