

UNITED STATES
DEPARTMENT OF THE INTERIOR
BUREAU OF LAND MANAGEMENT

APPLICATION FOR PERMIT TO DRILL OR DEEPEN

1a. TYPE OF WORK

DRILL ☒

DEEPEN ☐

b. TYPE OF WELL

OIL
WELL ☐

GAS
WELL ☒

OTHER

SINGLE
ZONE ☐

MULTIPLE
ZONE ☒

2. NAME OF OPERATOR

ENERGEN RESOURCES CORPORATION

3. ADDRESS AND TELEPHONE NO.

2198 Bloomfield Highway, Farmington, NM 87401

4. LOCATION OF WELL (Report location clearly and in accordance with any State requirements. *)

At surface
1845' FNL, 790' FEL
At proposed prod. zone

14. DISTANCE IN MILES AND DIRECTION FROM NEAREST TOWN OR POST OFFICE*

23 Miles Northwest of Lindrith, New Mexico

15. DISTANCE FROM PROPOSED*
LOCATION TO NEAREST
PROPERTY OR LEASE LINE, FT.

(Also to nearest drlg. unit line, if any) 790'

16. NO. OF ACRES IN LEASE

2557.76'

17. NO. OF ACRES ASSIGNED
TO THIS WELL

319.70

18. DISTANCE FROM PROPOSED LOCATION*
TO NEAREST WELL, DRILLING, COMPLETED,
OR APPLIED FOR, ON THIS LEASE, FT.

1300'

19. PROPOSED DEPTH

7585'

20. ROTARY OR CABLE TOOLS

Rotary

21. ELEVATIONS (Show whether DF, RT, GR, etc.)

6503' GL

22. APPROX. DATE WORK WILL START*

23. PROPOSED CASING AND CEMENTING PROGRAM

SIZE OF HOLE	GRADE SIZE OF CASING	WEIGHT PER FOOT	SETTING DEPTH	QUANTITY OF CEMENT
12-1/4"	9-5/8"	36#	200'	130 cu. ft., circ. to surface
8-3/4"	7"	23#	3515'	793 cu. ft., circ. to surface
6-1/4"	4-1/2"	11.6#	7585'	650 cu. ft., circ. to intermediate

An application with NMOC D is being submitted to downhole commingle. Selectively perforate and sand water fracture the Mesaverde and Dakota. This gas is dedicated.

NOTE: THIS IS A PIPELINE R.O.W. EXPEDITED APD.

IN ABOVE SPACE DESCRIBE PROPOSED PROGRAM: If proposal is to deepen, give data on present productive zone and proposed new productive zone. If proposal is to drill or deepen directionally, give pertinent data on subsurface locations and measured and true vertical depths. Give blowout preventer program, if any.

24.

SIGNED

TITLE Production Superintendent

DATE

9/26/00

(This space for Federal or State office use)

PERMIT NO.

APPROVAL DATE

Application approval does not warrant or certify that the applicant holds legal or equitable title to those rights in the subject lease which would entitle the applicant to conduct operations thereon.

CONDITIONS OF APPROVAL, IF ANY:

APPROVED BY

TITLE

DATE

NOV 22 2000

*See Instructions On Reverse Side

Title 18 U.S.C. Section 1001, makes it a crime for any person knowingly and willfully to make to any department or agency of the United States any false, fictitious or fraudulent statements or representations as to any matter within its jurisdiction.

District I
PO Box 1980, Hobbs, NM 88241-1980

State of New Mexico
Energy, Minerals & Natural Resources Department

Form C-102
Revised February 21, 1994

District II
PO Drawer 00, Artesia, NM 88211-0719

OIL CONSERVATION DIVISION
PO Box 2088
Santa Fe, NM 87504-2088

Submit to Appropriate District Office
State Lease - 4 Copies
Fee Lease - 3 Copies

District III
1000 Rio Brazos Rd., Aztec, NM 87410

District IV
PO Box 2088, Santa Fe, NM 87504-2088

☐ AMENDED REPORT

WELL LOCATION AND ACREAGE DEDICATION PLAT

¹ API Number 30-039-26576	² Pool Code 72319 / 74598	³ Pool Name Blanco Mesaverde / Basin Dakota
⁴ Property Code 21949	⁵ Property Name JICARILLA 152W	⁶ Well Number 4 → 28
⁷ OGAID No. 162928	⁸ Operator Name ENERGEN RESOURCES CORPORATION	⁹ Elevation 6503'

¹⁰ Surface Location

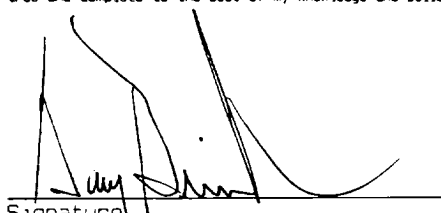
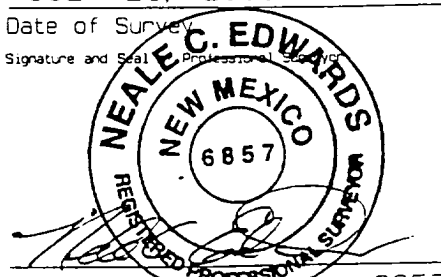
UL or lot no.	Section	Township	Range	Lot Idn	Feet from the	North/South line	Feet from the	East/West line	County
H	5	26N	5W		1845	NORTH	790	EAST	RIO ARriba

¹¹ Bottom Hole Location If Different From Surface

UL or lot no.	Section	Township	Range	Lot Idn	Feet from the	North/South line	Feet from the	East/West line	County

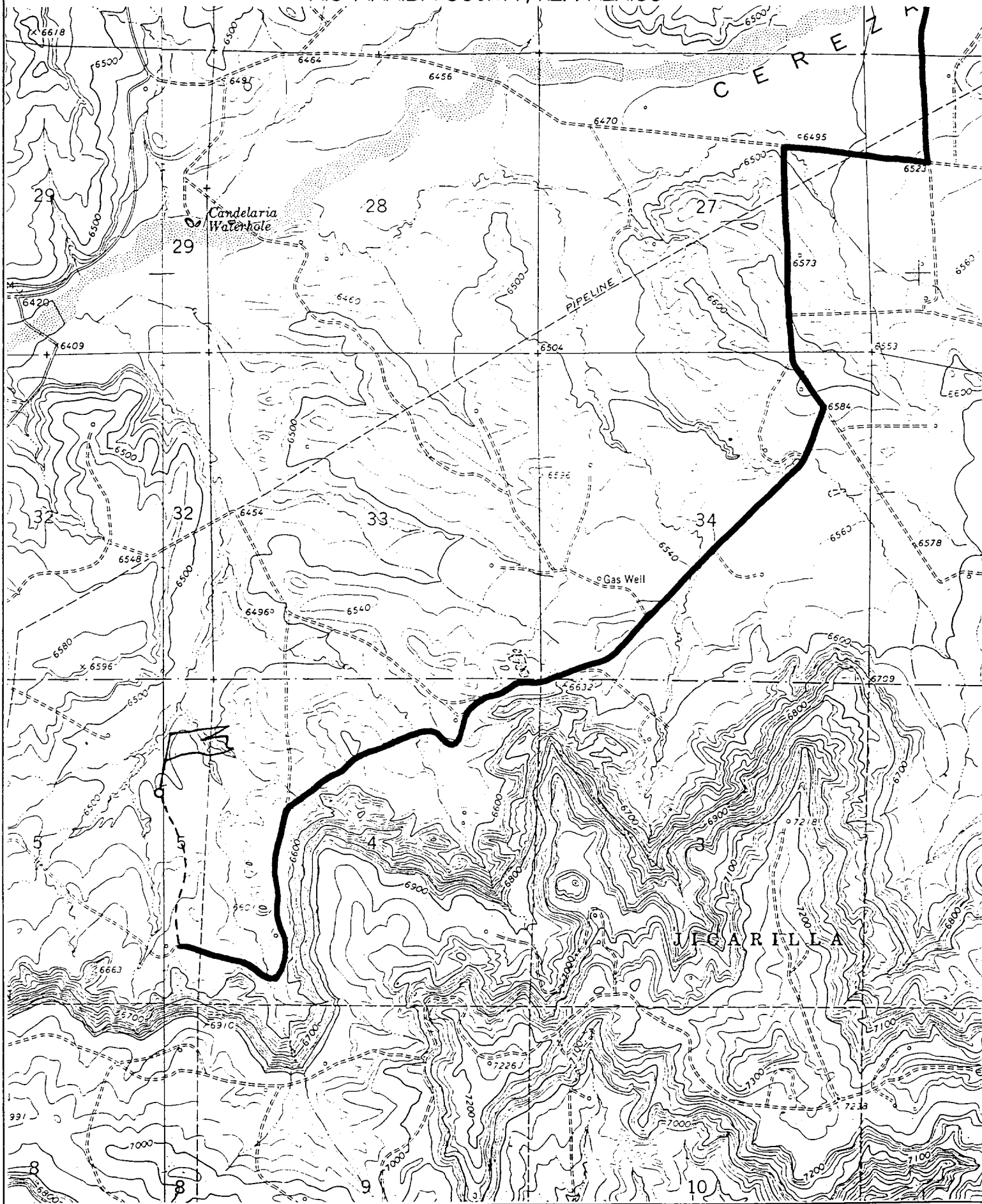
¹² Dedicated Acres 319.70	¹³ Joint or Infill	¹⁴ Consolidation Code	¹⁵ Order No.
--	-------------------------------	----------------------------------	-------------------------

NO ALLOWABLE WILL BE ASSIGNED TO THIS COMPLETION UNTIL ALL INTERESTS HAVE BEEN CONSOLIDATED
OR A NON-STANDARD UNIT HAS BEEN APPROVED BY THE DIVISION

¹⁶ 1312.74' LOT 4 1320.00' 2640.00'	5280.00'			1845' 790' 1320.00' 2640.00'	LOT 1 1316.04'
	LOT 3	LOT 2			
¹⁷ OPERATOR CERTIFICATION I hereby certify that the information contained herein is true and complete to the best of my knowledge and belief.  Signature Gary Brink Printed Name Production Superintendant Title 9/26/00 Date					
¹⁸ SURVEYOR CERTIFICATION I hereby certify that the well location shown on this plat was plotted from field notes of actual surveys made by me or under my supervision and that the same is true and correct to the best of my belief. JULY 21, 2000 Date of Survey  Signature and Seal NEALE C. EDWARDS NEW MEXICO 6857 Certificate Number 6857					

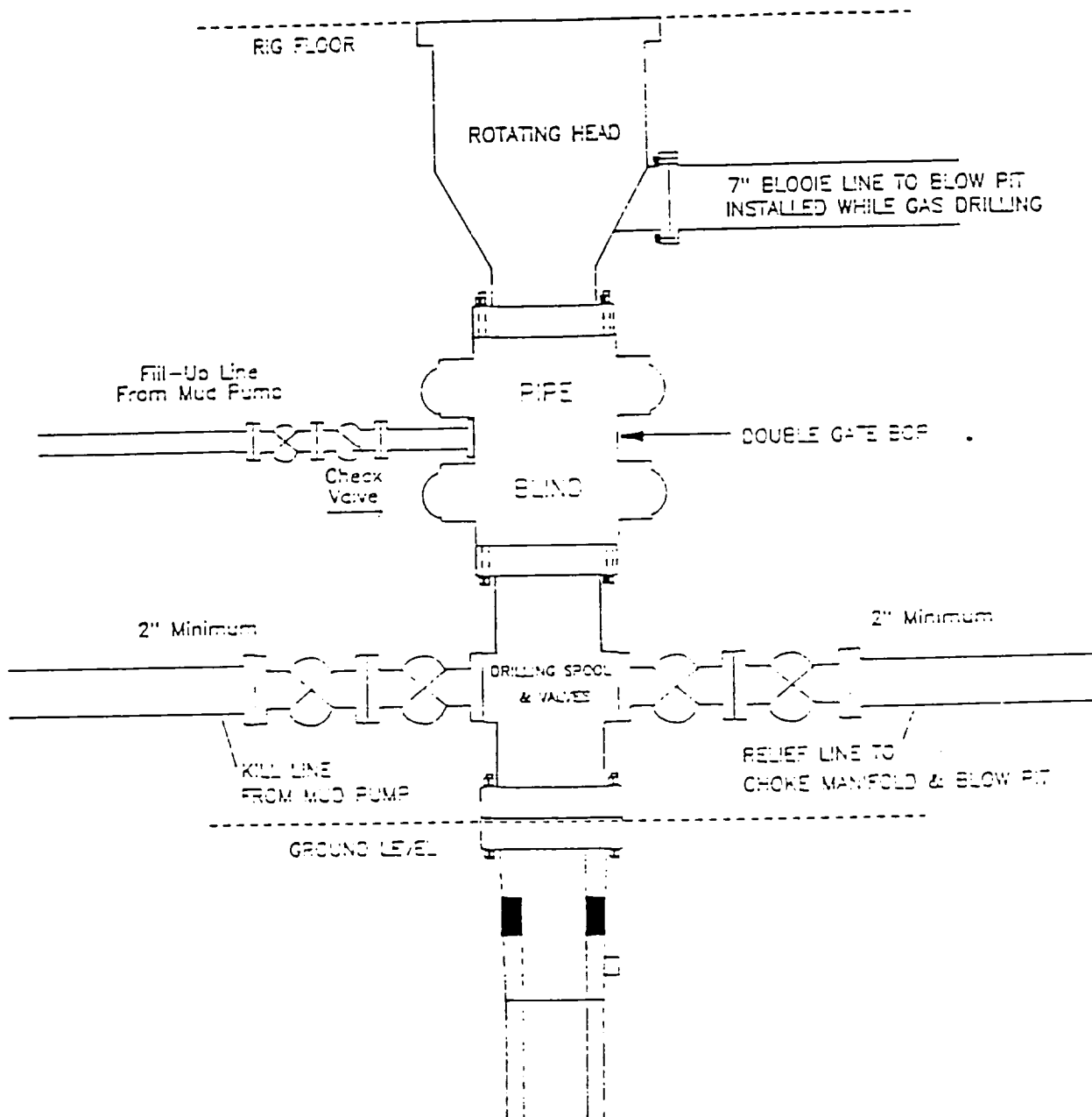
ENERGEN RESOURCES CORPORATION JICARILLA 152W #7

1845' FNL & 790' FEL, SECTION 5, T26N, R5W, N.M.P.M.
RIO ARRIBA COUNTY, NEW MEXICO



ENERGEN RESOURCES CORPORATION

Mesa Verde / Dakota Well BOP Configuration



Minimum BOP installation for a Mesa Verde well from Surface to Total Depth. 11" Bore, 2000psi minimum working pressure double gate BOP to be equipped with blind and pipe rams. A Schaffer Type 50 or equivalent rotating head to be installed on the top of the BOP. All equipment is 2000psi working pressure or greater.

Figure #1