

UNITED STATES  
DEPARTMENT OF THE INTERIOR  
BUREAU OF LAND MANAGEMENT

## APPLICATION FOR PERMIT TO DRILL OR DEEPEN

1. a. TYPE OF WORK DRILL <input checked="" type="checkbox"/> DEEPEN <input type="checkbox"/>		5. LEASE DESIGNATION AND SERIAL NO. SF -079160	
b. TYPE OF WELL OIL WELL <input type="checkbox"/> GAS WELL <input checked="" type="checkbox"/> OTHER <input type="checkbox"/> SINGLE ZONE <input type="checkbox"/> MULTIPLE ZONE <input checked="" type="checkbox"/>		6. IF INDIAN, ALLOTTEE OR TRIBE NAME	
2. NAME OF OPERATOR Pure Resources		7. UNIT AGREEMENT NAME Rincon Unit	
3. ADDRESS AND TELEPHONE NO. P.O. Box 850, Bloomfield New Mexico		8. FARM OR LEASE NAME, WELL NO. Rincon Unit 302M	
4. LOCATION OF WELL (Report location clearly and in accordance with any State requirement)* At surface 1673' FSL and 1578' FWL At proposed prod. zone Same as Surface		9. API WELL NO. 30-039-26689 n/a	
14. DISTANCE IN MILES AND DIRECTION FROM NEAREST TOWN OR POST OFFICE* 40 miles Southeast from Bloomfield NM.		10. FIELD AND POOL OR WLDLOCAT Basin Dakota/ Mesa Verde	
15. DISTANCE FROM PROPOSED* LOCATION TO NEAREST PROPERTY OR LEASE LINE FT (Also to nearest drg. Unit line, if any) 1578'	16. NO. OF ACRES IN LEASE 2645.09	11. SEC., T.R.M., OR BLK. AND SURVEY OR AREA K Sec. 11, T-26-N, R-7-W	
18. DISTANCE FROM PROPOSED* LOCATION TO NEAREST WELL, DRILLING, COMPLETED OR APPLIED FOR, ON THIS LEASE, FT. 1650'	19. PROPOSED DEPTH 7550'	12. COUNTY OR PARISH Rio Arriba	
21. ELEVATIONS (Show whether DF, RT, GR, 6509' GR)		13. STATE NM	
23. PROPOSED CASING AND CEMENTING PROGRAM		20. ROTARY OR CABLE TOOLS Rotary	
22. APPROX. DATE WORK WILL START* April 1, 2001			

SIZE OF HOLE	GRADE, SIZE OF CASING	WEIGHT PER FOOT	SETTING DEPTH	QUANTITY OF CEMENT
12-1/4"	H-40 9-5/8"	32.3#	350'	285 SACKS "B" TOC @ SURFACE
8-3/4"	K-55 7"	20#	2216	300 SACKS TYPE III TOC @ SURFACE
6-1/4"	N-80 4-1/2"	11.6#	7550	600 SX 65/35 POZ TYPE III TOC TIED INTO 7"

"Expedited APD/ROW"

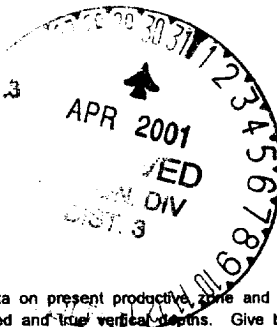
Pure plans to drill the Rincon Unit 302R, and complete in the Mesa Verde and the Basin Dakota and downhole commingle the two formations.

BOP- One double gate BOP with 3-1/2" pipe and blind rams, one choke manifold with adjustable and positive chokes, an accumulator will hydraulically operate BOP with 1 1/2 times the necessary capacity to close the rams and retain a minimum of 200 psi above recharge.

Rotating head will be utilized during the drilling of the 6-1/4" hole.

(Schematics are attached)

This action is subject to technical and procedural review pursuant to 43 CFR 3105.3 and appeal pursuant to 43 CFR 3165.4.



FOR THE BUREAU OF LAND MANAGEMENT  
SUPERVISOR OF FIELD OPERATIONS AND ATTACHED  
"SEE APD/ROW DOCUMENT"

IN ABOVE SPACE DESCRIBED PROGRAM: If proposal is to deepen, give data on present productive zone and proposed new productive zone. If proposal is to drill or deepen directionally, give pertinent data on subsurface locations and measured and true vertical depths. Give blowout preventer program, if any.

24.

SIGNED Mike C. Phillips TITLE San Juan Basin Area Foreman DATE 3/7/01

(This space for Federal or State office use)

PERMIT NO. \_\_\_\_\_ APPROVAL DATE 4/26/01

Application approval does not warrant or certify that the applicant holds legal or equitable title to those rights in the subject lease which would entitle the application to conduct operations thereon.  
CONDITIONS OF APPROVAL, IF ANY: /s/ Joel Farrell

APPROVED BY \_\_\_\_\_ TITLE \_\_\_\_\_ DATE APR 26

\*See Instructions On Reverse Side

Title 18 U.S.C. Section 1001, make it a crime for any person knowingly and willfully to make to any department or agency of the United States any false, fictitious or fraudulent statements or representations as to any matter within its jurisdiction.

NMOC

DISTRICT I  
1625 N. French Dr., Hobbs, N.M. 88240

State of New Mexico  
Energy, Minerals & Natural Resources Department

Form C-102  
Revised August 15, 2000

DISTRICT II  
811 South First, Artesia, N.M. 88210

DISTRICT III  
1000 Rdo Brazos Rd., Aztec, N.M. 87410

DISTRICT IV  
2040 South Pacheco, Santa Fe, NM 87505

OIL CONSERVATION DIVISION

2040 South Pacheco  
Santa Fe, NM 87505

Submit to Appropriate District Office  
State Lease - 4 Copies  
Fee Lease - 3 Copies

☐ AMENDED REPORT

WELL LOCATION AND ACREAGE DEDICATION PLAT

*API Number 30-039-26689		*Pool Code 71599	*Pool Name Basin Dakota
*Property Code 26629	*Property Name RINCON UNIT		*Well Number 302M
*OGRD No. 189071	*Operator Name PURE RESOURCES		*Elevation 6509'

<sup>10</sup> Surface Location

UL or lot no.	Section	Township	Range	Lot Idn	Feet from the	North/South line	Feet from the	East/West line	County
K	11	26-N	7-W		1673	SOUTH	1578	WEST	RIO ARRIBA

<sup>11</sup> Bottom Hole Location If Different From Surface

UL or lot no.	Section	Township	Range	Lot Idn	Feet from the	North/South line	Feet from the	East/West line	County
*Dedicated Acres 320		*Joint or Infill		*Consolidation Code		*Order No.			

NO ALLOWABLE WILL BE ASSIGNED TO THIS COMPLETION UNTIL ALL INTERESTS HAVE BEEN CONSOLIDATED  
OR A NON-STANDARD UNIT HAS BEEN APPROVED BY THE DIVISION

<sup>16</sup> SEC. CORNER FD. B.L.M. BC. 1954	5204.31'	LAT. = 36-29-52 N. LONG. = 107-32-54 W.	102	1873'	S 88-33-33 E	5238.41'	SEC. CORNER FD. B.L.M. BC. 1954
<sup>17</sup> OPERATOR CERTIFICATION I hereby certify that the information contained herein is true and complete to the best of my knowledge and belief.  Signature <u>Michael C. Phillips</u> Printed Name San Juan Basin Foreman Title Date <u>2/5/01</u>							
<sup>18</sup> SURVEYOR CERTIFICATION I hereby certify that the well location shown on this plat was plotted from field notes of actual surveys made by me or under my supervision and that the same is true and correct to the best of my belief.  Date of Survey <u>11-2-2000</u> Signature and Seal of Professional Surveyor 8894 Certificate Number							

DISTRICT I  
1625 N. French Dr., Hobbs, N.M. 88240

State of New Mexico  
Energy, Minerals & Natural Resources Department

Form C-102  
Revised August 15, 2000

DISTRICT II  
811 South First, Artesia, N.M. 88210

DISTRICT III  
1000 Rio Brazos Rd., Aztec, N.M. 87410

DISTRICT IV  
2040 South Pacheco, Santa Fe, NM 87506

OIL CONSERVATION DIVISION  
2040 South Pacheco  
Santa Fe, NM 87505

Submit to Appropriate District Office  
State Lease - 4 Copies  
Fee Lease - 3 Copies

☐ AMENDED REPORT

WELL LOCATION AND ACREAGE DEDICATION PLAT

1 API Number 30-039-26689		2 Pool Code 72319		3 Pool Name Blanco Mesa Verde	
4 Property Code 26629		5 Property Name RINCON UNIT			6 Well Number 302M
7 OGRID No. 189071		8 Operator Name PURE RESOURCES			9 Elevation 6509'

10 Surface Location

UL or lot no.	Section	Township	Range	Lot Idn	Feet from the	North/South line	Feet from the	East/West line	County
K	11	26-N	7-W		1673	SOUTH	1578	WEST	RIO ARriba

11 Bottom Hole Location If Different From Surface

UL or lot no.	Section	Township	Range	Lot Idn	Feet from the	North/South line	Feet from the	East/West line	County
12 Dedicated Acres 320					13 Joint or Infill		14 Consolidation Code		15 Order No.

NO ALLOWABLE WILL BE ASSIGNED TO THIS COMPLETION UNTIL ALL INTERESTS HAVE BEEN CONSOLIDATED  
OR A NON-STANDARD UNIT HAS BEEN APPROVED BY THE DIVISION

16 SEC. CORNER FD. B.L.M. BC. 1954					
5204.31'					
N 00-36-55 E		11			
1578'		LAT. = 36-29-52 N. LONG. = 107-32-54 W.			
		1673'			
SEC. CORNER FD. B.L.M. BC. 1954		S 88-33-33 E		5238.41'	

17 OPERATOR CERTIFICATION

I hereby certify that the information contained herein  
is true and complete to the best of my knowledge and  
belief.

*Michael C. Phillips*  
Signature

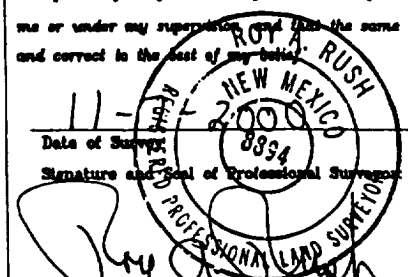
Michael C. Phillips  
Printed Name  
San Juan Basin Foreman  
Title

2/5/01  
Date

18 SURVEYOR CERTIFICATION

I hereby certify that the well location shown on this plat  
was plotted from field notes of actual surveys made by  
me or under my supervision and that the same is true  
and correct to the best of my belief.

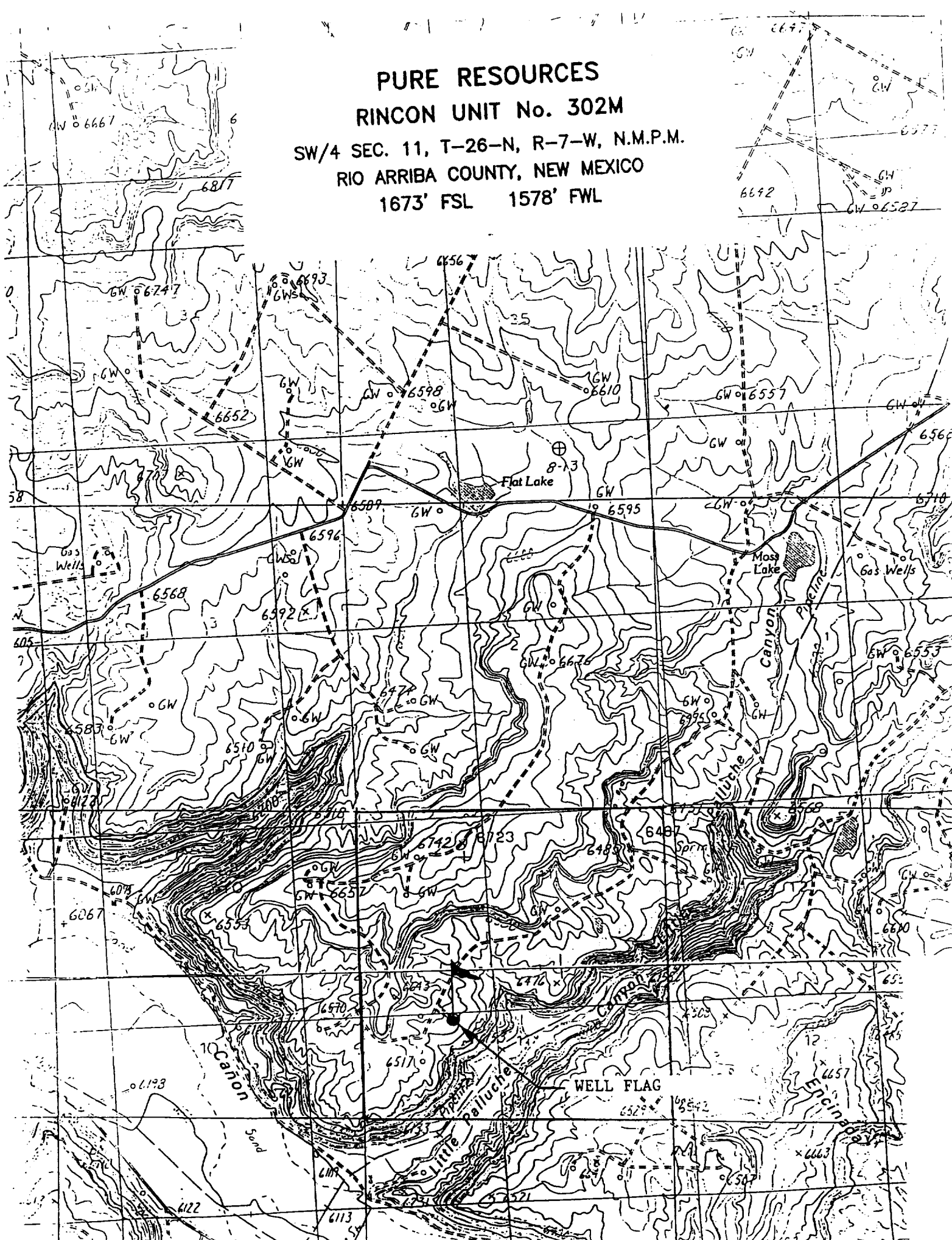
11 -  
Date of Survey  
Signature and Seal of Professional Surveyor



8894  
Certificate Number

PURE RESOURCES  
RINCON UNIT No. 302M

SW/4 SEC. 11, T-26-N, R-7-W, N.M.P.M.  
RIO ARriba COUNTY, NEW MEXICO  
1673' FSL 1578' FWL



**RINCON UNIT WELL NO. 302M**  
**DRILLING PROGRAM – PAGE 3**

**Cementing Program**

1. The 9-5/8" surface casing will be cemented to the surface with 285 sacks of class "B" cement + 2 Cacl2 and ¼# per cello flake. 14.5ppg
2. The 7" intermediate casing will be cemented to surface with; 300 sacks of type III (35:65) Poz cement + 8% gel + 2% CACL2, + 6.25#/sack Gilsonite, .25 lbs/sk Cello Flake @ 12.1 ppg , Followed by 50 sacks class "B" cement + 2% CACL2 + ¼ #/sack cello-flake. @ 14.5 ppg.
3. The 4-1/2" production casing will be cemented and tied into the intermediate casing with 600 sacks 65/35 Poz Type III cement + ¼ #/sack CF, 6% gel, 10#/sack CSE + 3% KCL, FL-62 + .2% CD-32, @ 12.5 ppg.

Casing hardware for the production string to include guide shoe, float collar, centralized shoe joint and next five joints. Centralizers across producing zones.

**Auxiliary Equipment**

A kelly cock will be used with handle available. A full opening safety valve will be used when Kelly is out of string. Rotating head while air drilling. Will have vacuum diversion on blooie line.

5. **DRILLING FLUID PROGRAM**

<u>Depth</u>	<u>Type</u>	<u>Weight</u>	<u>Vis</u>	<u>W.L.</u>
0-350'	Spud Mud			N.C.
350-2216'	Fresh Water Gel	8.3-8.6	30-35	N.C
2216'-TD	Air	N.C.	N.C.	N.C.