

UNITED STATES  
DEPARTMENT OF THE INTERIOR  
BUREAU OF LAND MANAGEMENT  
APPLICATION FOR PERMIT TO DRILL OR DEEPEN

1. TYPE OF WORK  
DRILL ☒ DEEPEN ☐

2. TYPE OF WELL  
OIL WELL ☐ GAS WELL ☒ OTHER ☐ SINGLE ZONE ☐ MULTIPLE ZONE ☒

3. NAME OF OPERATOR  
Pure Resources

4. ADDRESS AND TELEPHONE NO.  
P.O. Box 850, Bloomfield New Mexico

5. LOCATION OF WELL (Report location clearly and in accordance with any State requirement)  
At surface 4947 FSL and 1956 FWM  
At proposed prod zone 1943 FSL 1595 FWM  
Same as Surface

6. DISTANCE IN MILES AND DIRECTION FROM NEAREST TOWN OR POST OFFICE  
40 miles Southeast from Bloomfield NM

7. DISTANCE FROM PROPOSED LOCATION TO NEAREST PROPERTY OR LEASE LINE FT (Also to nearest dip Unit line, if any)  
1947

8. DISTANCE FROM PROPOSED LOCATION TO NEAREST WELL, DRILLING, COMPLETED OR APPLIED FOR, ON THIS LEASE, FT.  
1274

9. NO. OF ACRES IN LEASE  
2645.09

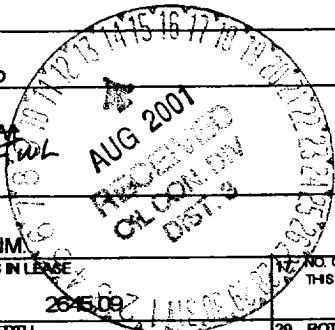
10. NO. OF ACRES ASSIGNED TO THIS WELL  
320 W/P

11. PROPOSED DEPTH  
7350'

12. ROTARY OR CABLE TOOLS  
Rotary

13. ELEVATIONS (Show whether DF, RT, GR, e)  
6506-6512 GR

14. APPROXIMATE WORK WILL START  
April 1, 2001



23. PROPOSED CASING AND CEMENTING PROGRAM

SIZE OF HOLE	GRADE, SIZE OF CASING	WEIGHT PER FOOT	SETTING DEPTH	QUANTITY OF CEMENT
12-1/4"	H-40 9-5/8"	32.3#	350'	285 SACKS "B" TOC @ SURFACE
8-3/4"	K-55 7"	20#	2309'	300 SACKS TYPE III TOC @ SURFACE
6-1/4"	N-80 4-1/2"	11.6#	7350'	3 SACKS 65/35 POZ TYPE III TOC TIED INTO 7" CASING - 100' min

"Expedited APD/ROW"

Pure plans to drill the Rincon Unit 231R, and complete in the Mesa Verde and the Basin Dakota and downhole commingle the two formations.

BOP- One double gate BOP with 3-1/2" pipe and blind rams, one choke manifold with adjustable and positive chokes, an accumulator will hydraulically operate BOP with 1 1/2 times the necessary capacity to close the rams and retain a minimum of 200 psi above recharge. Rotating head will be utilized during the drilling of the 6-1/4" hole. (Schematics are attached)

procedural review pursuant to 43 CFR 3165.3 and appeal pursuant to 43 CFR 3165.4.

IN ABOVE SPACE DESCRIBED PROGRAM: If proposal is to deepen, give data on present productive zone and proposed new productive zone. If proposal is to drill or deepen directionally, give pertinent data on subsurface locations and measured and true vertical depths. Give blowout preventer program, if any.

24. SIGNED Mike C. Phillips TITLE San Juan Basin Area Foreman DATE 3/05/01  
MIKE C. PHILLIPS

(This space for Federal or State office use)

PERMIT NO. \_\_\_\_\_ APPROVAL DATE 8/10/01

Application approval does not warrant or certify that the applicant holds legal or equitable title to those rights in the subject lease which would entitle the application to conduct operations thereon. CONDITIONS OF APPROVAL, IF ANY:

APPROVED BY Col Farren TITLE \_\_\_\_\_ DATE AUG 10

\*See Instructions On Reverse Side

Title 18 U.S.C. Section 1001, make it a crime for any person knowingly and willfully to make to any department or agency of the United States any false, fictitious or fraudulent statements or representations as to any matter within its jurisdiction.

NMOCD

DISTRICT I  
1625 N. French Dr., Hobbs, N.M. 88240

State of New Mexico  
Energy, Minerals & Natural Resources Department

Form C-102  
Revised August 15, 2000

DISTRICT II  
811 South First, Artesia, N.M. 88210

DISTRICT III  
1000 Rio Brazos Rd., Artec, N.M. 87410

DISTRICT IV  
2040 South Pacheco, Santa Fe, NM 87505

OIL CONSERVATION DIVISION  
2040 South Pacheco  
Santa Fe, NM 87505

Submit to Appropriate District Office  
State Lease - 4 Copies  
Fee Lease - 3 Copies

☐ AMENDED REPORT

WELL LOCATION AND ACREAGE DEDICATION PLAT

*API Number 30-039-26691		*Pool Code 72319	*Pool Name Blanco Mesa Verde
*Property Code 26629	*Property Name RINCON UNIT		*Well Number 231R
*OGRD No. 189071	*Operator Name PURE RESOURCES		*Elevation 6506'

10 Surface Location

UL or lot no.	Section	Township	Range	Lot Idn	Feet from the	North/South line	Feet from the	East/West line	County
K	12	26-N	7-W		1943	SOUTH	1595	WEST	RIO ARriba

11 Bottom Hole Location If Different From Surface

UL or lot no.	Section	Township	Range	Lot Idn	Feet from the	North/South line	Feet from the	East/West line	County
Dedicated Acres 320 W2					Joint or Infill		Consolidation Code		Order No.

NO ALLOWABLE WILL BE ASSIGNED TO THIS COMPLETION UNTIL ALL INTERESTS HAVE BEEN CONSOLIDATED  
OR A NON-STANDARD UNIT HAS BEEN APPROVED BY THE DIVISION

16 FD. B.L.M.  
BC 1954

N 00-34-34 E 5219.71'

1595'

667'

287'

638'

1943'

12

LAT. = 36-29-53 N.  
LONG. = 107-31-50 W.

77° E N3 73° N1 1000

FD. B.L.M.  
BC 1954

S 87-15-51 E 5234.03'

AUG 2001  
RECEIVED  
C/O OIL DIV  
DIST. 8

17 OPERATOR CERTIFICATION

I hereby certify that the information contained herein  
is true and complete to the best of my knowledge and  
belief.

Signature

Micheal C. Phillips

Printed Name

San Juan Area Basin

Title Drilling/Production Foreman

July 24th, 2001

Date

18 SURVEYOR CERTIFICATION

I hereby certify that the well location shown on this plat  
was plotted from field notes of actual surveys made by  
me or under my supervision, and that the same is true  
and correct to the best of my belief.

Date of Survey

Signature and Seal of Professional Surveyor:

8894

Certificate Number

DISTRICT I  
1625 N. French Dr., Hobbs, N.M. 88240

State of New Mexico  
Energy, Minerals & Natural Resources Department

Form C-102  
Revised August 15, 2000

DISTRICT II  
811 South First, Artesia, N.M. 88210

DISTRICT III  
1000 Rio Brazos Rd., Aztec, N.M. 87410

DISTRICT IV  
2040 South Pacheco, Santa Fe, NM 87505

OIL CONSERVATION DIVISION

2040 South Pacheco  
Santa Fe, NM 87505

Submit to Appropriate District Office  
State Lease - 4 Copies  
Fee Lease - 3 Copies

☐ AMENDED REPORT

WELL LOCATION AND ACREAGE DEDICATION PLAT

*API Number 30-039- <b>26691</b>		*Pool Code 71599	*Pool Name Basin Dakota
*Property Code 26629	*Property Name RINCON UNIT		*Well Number 231R
*OGRID No. 189071	*Operator Name PURE RESOURCES		*Elevation 6506'

<sup>10</sup> Surface Location

UL or lot no.	Section	Township	Range	Lot Idn	Feet from the 1943	North/South line	Feet from the	East/West line	County
K	12	26-N	7-W			SOUTH	1595	WEST	RIO ARRIBA

<sup>11</sup> Bottom Hole Location If Different From Surface

UL or lot no.	Section	Township	Range	Lot Idn	Feet from the	North/South line	Feet from the	East/West line	County
<sup>12</sup> Dedicated Acres <b>320 W<sub>2</sub></b>			<sup>13</sup> Joint or Infill		<sup>14</sup> Consolidation Code		<sup>15</sup> Order No.		

NO ALLOWABLE WILL BE ASSIGNED TO THIS COMPLETION UNTIL ALL INTERESTS HAVE BEEN CONSOLIDATED  
OR A NON-STANDARD UNIT HAS BEEN APPROVED BY THE DIVISION

FD. B.L.M. BC 1954					
N 00-34-34 E 5219.71'					
		12			
		1595'		LAT. = 36-29-53 N. LONG. = 107-31-50 W.	
		287'		1022'	
		667'			
		638'			
		1943'			
FD. B.L.M. BC 1954		S 87-15-51 E		5234.03'	

<sup>17</sup> OPERATOR CERTIFICATION

I hereby certify that the information contained herein  
is true and complete to the best of my knowledge and  
belief.

Signature

Micheal C. Phillips

Printed Name

San Juan Basin Area Drilling/  
Title Production Foreman

July 24th, 2001

Date

<sup>18</sup> SURVEYOR CERTIFICATION

I hereby certify that the well location shown on this plat  
was plotted from field notes of actual surveys made by  
me or under my supervision, and that the same is true  
and correct to the best of my belief.

Date of Survey

Signature and Seal of Professional Surveyor:

8894

Certificate Number

UNITED STATES  
DEPARTMENT OF THE INTERIOR  
BUREAU OF LAND MANAGEMENT

SUNDRY NOTICES AND REPORTS ON WELLS

Do not use this form for proposals to drill or to deepen or reentry to a different reservoir.  
Use "APPLICATION FOR PERMIT"-for such proposals

FORM APPROVED  
Budget Bureau No. 1004-0135  
Expires: March 31, 1993

5. Lease Designation and Serial No.

SF 079160

6. If Indian, Allottee or Tribe Name

7. If Unit or CA. Agreement Designation

RINCON UNIT

8. Well Name and No.

RINCON UNIT 231R

9. API Well No.

30-039-

10. Field and Pool, or Exploration Area

BASIN DK/BLANCO MV

11. County or Parish, State

Rio Arriba, NM

SUBMIT IN TRIPLICATE

1. Type of Well

☐ Oil Well ☒ Gas Well ☐ Other

2. Name of Operator

PURE RESOURCES

3. Address and Telephone No.

P.O. BOX 850 - BLOOMFIELD, NM 87413

4. Location of Well (Footage, Sec., T., R., or Survey Description)

1943' FSL & 1595' FWL

"K" Sec 34, T27N, R07W

12. CHECK APPROPRIATE BOX(S) TO INDICATE NATURE OF NOTICE, REPORT, OR OTHER DATA

TYPE OF SUBMISSION

- ☐ Notice of Intent  
☒ Subsequent Report  
☐ Final Abandonment Notice

TYPE OF ACTION

- ☐ Abandonment  
☐ Recompletion  
☐ Plugging Back  
☐ Casing Repair  
☐ Altering Casing  
☒ Other

CHANGE LOCATION

- ☐ Change of Plans  
☐ New Construction  
☐ Non-routine Fracturing  
☐ Water Shut-Off  
☐ Conversion to Injection  
☐ Dispose Water

(Note: Report results of multiple completion on Well Completions or Recompletions Reports and Log form.)

13. Describe Proposed or Completed Operations (Clearly state all pertinent details, and give pertinent dates, including estimated date of starting any proposed work. If well is directionally drilled give subsurface locations and measured and true vertical depth for all markers and zones pertinent to this work.)\*

Pure Resources L.P. is changing the location of Rincon Unit 231R; per BLM's request; from

1947' FSL & 1956' FWL

TO

1943' FSL & 1595' FWL

EXPEDITED APD/ROW



14.

Signed

*Micheal C. Phillips*  
MICHEAL C. PHILLIPS

Title

SAN JUAN BASIN FOREMAN

Date

07/24/01

(This space for Federal or State office use)

Approved by

/s/ Joel Farrell

Title

Date

AUG 10 2001

Conditions of approval, if any:

Title 18 U.S.C. Sections 1001, makes it a crime for any person knowingly and willfully to make to any department or agency of the United States of false, fictitious or fraudulent statements or representations as to any matter within its jurisdiction.

\*See Instructions on Reverse Side

NMOCD

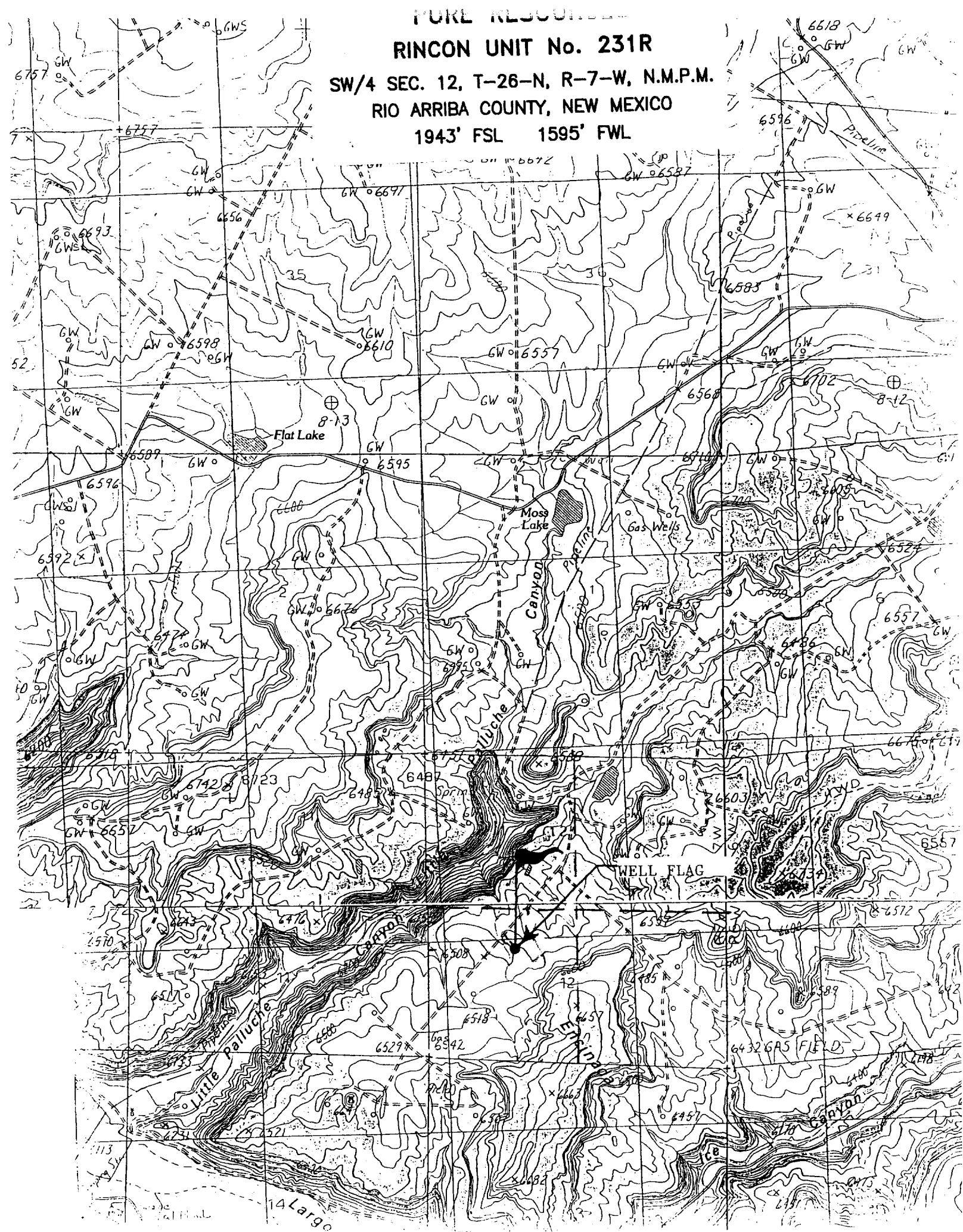
PURE RESERVE

# RINCON UNIT No. 231R

SW/4 SEC. 12, T-26-N, R-7-W, N.M.P.M.

RIO ARriba COUNTY, NEW MEXICO

1943' FSL 1595' FWL



**PURE RESOURCES WELL NO. 231R  
1,947' FSL, 1,956' FWL, SEC. 12, T-26-N, R-7-W  
RIO ARRIBA CO. NEW MEXICO**

**8 POINT DRILLING PLAN**

**1. ESTIMATED FORMATION TOPS**

<b><u>FORMATION NAME</u></b>	<b><u>DEPTH FROM GL</u></b>
San Jose	Surface
Ojo Alamo	1,924'
Kirtland Shale	2,249'
Pictured Cliffs	2,774'
Cliff House	4,459'
Point Lookout	5,068'
Mancos	5,394'
Tocito Sand	6,596'
Dakota	7,174'
Dakota "F"	7,284'
Total Depth	7,309'
Permit TD	7,350'

**2. OIL, GAS, WATER, OR OTHER MINERAL BEARING ZONES**

<b><u>EXPECTED GAS ZONES</u></b>	<b><u>DEPTH FROM GL</u></b>
Fruitland Coal	2724'-2774'
Pictured Cliffs	2774-2840'
Mesa Verde	4459-5394'
Dakota	7174-7350

<b><u>EXPECTED WATER ZONES</u></b>	<b><u>DEPTH FROM GL</u></b>
Ojo Alamo	1924'

Possible water zones will be protected by 7" intermediate casing and/or 4-1/2" production strings, 7" cemented to surface, and 4-1/2" casing cement tied in to 7".

**3. PRESSURE CONTROL BOP'S AND RELATED EQUIPMENT**

Casing Head: 7" x 11" – 3000 psi W.P.

BOP Stack and Related Equipment: (See Attachment No. 1 &2).

**RINCON UNIT WELL NO. 231R**  
**DRILLING PROGRAM – PAGE 2**

One double-gate BOP with 4-1/2" and then 3-1/2" pipe and blind rams.

One choke manifold with adjustable and positive chokes.

An accumulator will hydraulically operate the BOP with 1-1/2 times the necessary capacity to close the rams and retain a minimum of 200psi above recharge. The remote unit will be located in the bottom "dog house" or on the ground between the "dog house" and the toolpushers trailer. A rotating head on top of the BOP stack will be utilized when necessary.

Testing Procedure:

The BOP and related equipment will be tested in accordance with the provisions of Onshore Oil and Gas Order No. 2.

BOP's will be operationally tested daily and each test will be logged in the IADC Daily Drilling Report.

Blooie Line:

The blooie line and related equipment will meet all requirements of Onshore Oil and Gas Order No. 2.

4. **CASING AND CEMENTINNG PROGRAM**

<b><u>SURFACE CASING (Spud Mud)</u></b>						
<u>Age</u>	<u>Depth</u>	<u>Hole Size</u>	<u>Size</u>	<u>Weight</u>	<u>Grade</u>	<u>Thread</u>
New	0-350'	12-1/4"	9-5/8"	32.3#	H-40	ST&C
<b><u>INTERMEDIATE CASING (FW Mud)</u></b>						
<u>Age</u>	<u>Depth</u>	<u>Hole Size</u>	<u>Size</u>	<u>Weight</u>	<u>Grade</u>	<u>Thread</u>
New	0-2309	8-3/4"	7"	20#	K-55	ST&C
<b><u>PRODUCTION CASING (Air Dusting)</u></b>						
<u>Age</u>	<u>Depth</u>	<u>Hole Size</u>	<u>Size</u>	<u>Weight</u>	<u>Grade</u>	<u>Thread</u>
New	0-TD	6-1/4"	4-1/2"	11.6#	I-80	LT&C

**MINIMUM SAFETY FACTORS**

Collapse: 1.125

Tension: 1.8

Burst: 1.0

**RINCON UNIT WELL NO. 231R**  
**DRILLING PROGRAM – PAGE 3**

**Cementing Program**

1. The 9-5/8" surface casing will be cemented to the surface with 200 sacks of class Type III "B" cement + 2 CACL2 and ¼# per cello flake. (1.39 cu/ft) 14.5ppg
2. The 7" intermediate casing will be cemented to surface with; 325 sacks of type III (35:65) Poz cement + 8% gel + 2% CACL2, + 6.25#/sack Gilsonite, .25 lbs/sk Cello Flake @ (2.11 CU/FT) 12.1 ppg , Followed by 80 sacks class "B" cement + 2% CACL2 + ¼ #/sack cello-flake. @ (1.39 CU/FT) 14.5 ppg.
3. The 4-1/2" production casing will be cemented and tied into the intermediate casing with 600 sacks 65/35 Poz Type III cement + ¼ #/sack CF, 6% gel, 10#/sack CSE + 2% KCL, FL-62 + .2% CD-32, @ (2.06 CU/FT) 12.5 ppg.

Casing hardware for the production string to include guide shoe, float collar, centralized shoe joint and next five joints. Centralizers across producing zones.

**Auxiliary Equipment**

A kelly cock will be used with handle available. A full opening safety valve will be used when Kelly is out of string. Rotating head while air drilling. Will have vacuum diversion on blooie line.

5. **DRILLING FLUID PROGRAM**

<u>Depth</u>	<u>Type</u>	<u>Weight</u>	<u>Vis</u>	<u>W.L.</u>
0-350'	Spud Mud			N.C.
350-2309'	Fresh Water Gel	8.3-8.6	30-35	N.C
2309-TD	Air/Nitrogen	N.C.	N.C.	N.C.