

UNITED STATES
DEPARTMENT OF THE INTERIOR
BUREAU OF LAND MANAGEMENT

APPLICATION FOR PERMIT TO DRILL, DEEPEN, OR PLUG BACK

01 JUN 15 10:59

1a. Type of Work
DRILL

1b. Type of Well
GAS

2. Operator
BURLINGTON RESOURCES Oil & Gas Company

3. Address & Phone No. of Operator
PO Box 4289, Farmington, NM 87499
(505) 326-9700

4. Location of Well
1350' FNL, 1915' FWL
Latitude 36° 31.2, Longitude 107° 22.0

5. Lease Number
Jicarilla Contract 151
Unit Reporting Number

6. If Indian, All. or Tribe
Jicarilla Apache
Unit Agreement Name

8. Farm or Lease Name
Arizona Jicarilla B

9. Well Number
4B

10. Field, Pool, Wildcat
Blanco Mesaverde

11. Sec., Twn, Rge, Mer. (NMPM)
F Sec. 4, T-26-N, R-5-W
API # 30-039-26702

12. County
Rio Arriba

13. State
NM

14. Distance in Miles from Nearest Town
44 miles from Blanco

15. Distance from Proposed Location to Nearest Property or Lease Line
1350'

16. Acres in Lease

17. Acres Assigned to Well
319.77 W/2

18. Distance from Proposed Location to Nearest Well, Drlg, Compl, or Applied for on this Lease
879'

19. Proposed Depth
5769'

20. Rotary or Cable Tools
Rotary

21. Elevations (DF, FT, GR, Etc.)
6554' GR

22. Approx. Date Work will Start

23. Proposed Casing and Cementing Program
See Operations Plan attached

24. Authorized by: [Signature] Regulatory/Compliance Supervisor Date 1-5-01

PERMIT NO. _____

APPROVAL DATE _____

APPROVED BY S. W. Anderson

TITLE Asst. Field Mgr.

DATE 3-06-01

Archaeological Report to be submitted

Threatened and Endangered Species Report to be submitted

NOTE: This format is issued in lieu of U.S. BLM Form 3160-3

Title 18 U.S.C. Section 1001, makes it a crime for any person knowingly and willfully to make to any department or agency of the United States any false, fictitious or fraudulent statements or presentations as to any matter within its jurisdiction.

DISTRICT I
P.O. Box 1980, Hobbs, N.M. 88241-1980

DISTRICT II
P.O. Drawer DD, Artesia, N.M. 88211-0719

DISTRICT III
1000 Rio Brazos Rd., Aztec, N.M. 87410

DISTRICT IV
PO Box 2088, Santa Fe, NM 87504-2088

State of New Mexico
Energy, Minerals & Natural Resources Department

OIL CONSERVATION DIVISION

P.O. Box 2088
Santa Fe, NM 87504-2088

Form C-102

Revised February 21, 1994

Instructions on back

Submit to Appropriate District Office

State Lease - 4 Copies

Fee Lease - 3 Copies

☐ AMENDED REPORT

WELL LOCATION AND ACREAGE DEDICATION PLAT

¹ API Number 30-039- <u>26702-</u>		² Pool Code 72319	³ Pool Name Blanco Mesaverde
⁴ Property Code 18476	⁵ Property Name ARIZONA JICARILLA B		⁶ Well Number 4B
⁷ OGRID No. 14538	⁸ Operator Name BURLINGTON RESOURCES OIL & GAS INC.		⁹ Elevation 6554

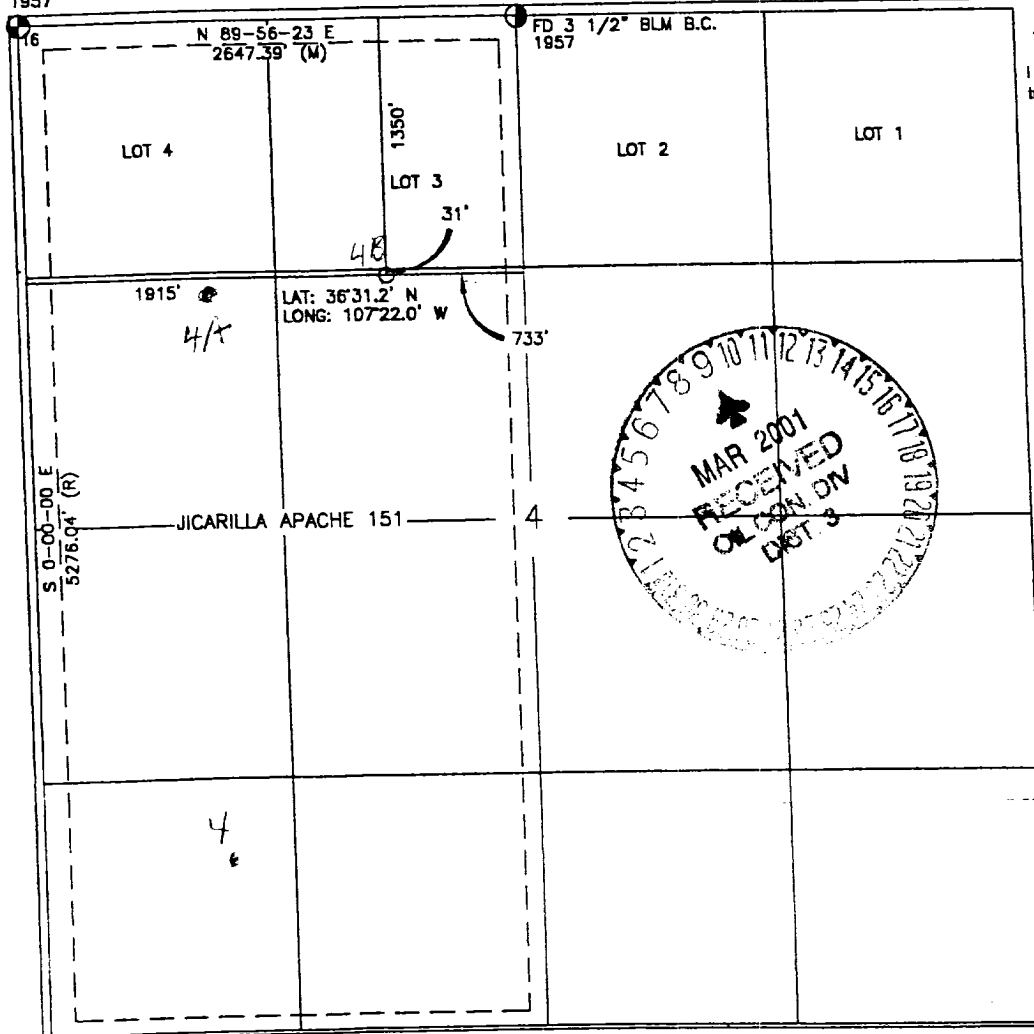
¹⁰ Surface Location

UL or lot no.	Section	Township	Range	Lot Idn	Feet from the	North/South line	Feet from the	East/West line	County
F	4	26-N	5-W		1350	NORTH	1915	WEST	RIO ARRIBA

¹¹ Bottom Hole Location If Different From Surface

UL or lot no.	Section	Township	Range	Lot Idn	Feet from the	North/South line	Feet from the	East/West line	County
¹² Dedicated Acres MV-W.319.77					¹³ Joint or Infill		¹⁴ Consolidation Code		¹⁵ Order No.

NO ALLOWABLE WILL BE ASSIGNED TO THIS COMPLETION UNTIL ALL INTERESTS HAVE BEEN CONSOLIDATED
OR A NON-STANDARD UNIT HAS BEEN APPROVED BY THE DIVISION



17 OPERATOR CERTIFICATION

I hereby certify that the information contained herein is true and complete to the best of my knowledge and belief

Peggy Cole
Signature
Peggy Cole
Printed Name
Regulatory Supervisor
Title
1-5-01
Date

18 SURVEYOR CERTIFICATION

I hereby certify that the well location shown on this plat was plotted from field notes of actual surveys made by me or under my supervision, and that the same is true and correct to the best of my belief.

9-22-00
Date of Survey
ROY A. RUSH
Signature and Seal of Professional Surveyor
8894
Certificate Number

ARIZONA JICARILLA B #4B

NW/4 SEC. 4, T-26-N, R-5-W, N.M.P.M.

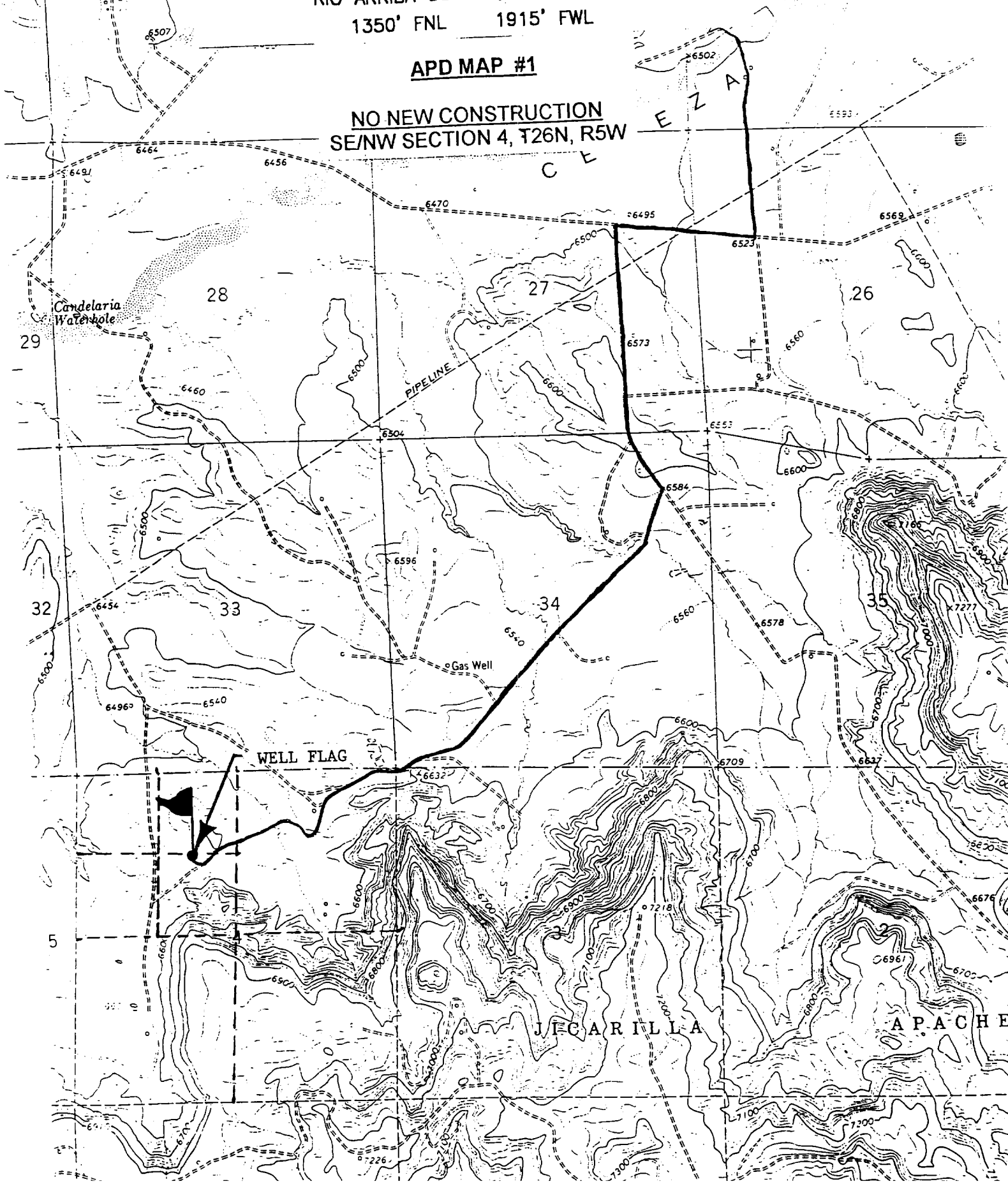
RIO ARRIBA COUNTY, NEW MEXICO

1350' FNL 1915' FWL

23

APD MAP #1

NO NEW CONSTRUCTION
SE/NW SECTION 4, T26N, R5W



OPERATIONS PLAN

Well Name: Arizona Jicarilla B #4B
Location: 1350' FNL, 1915' FWL, Section 4, T-26-N, R-5-W
Rio Arriba County, New Mexico
Latitude 36° 31.2, Longitude 107° 22.0
Formation: Blanco Mesa Verde
Elevation: 6554' GL

<u>Formation</u>	<u>Tops:</u>	<u>Top</u>	<u>Bottom</u>	<u>Contents</u>
Surface		San Jose	2616'	H ₂ O - Nacimiento at 1460' -
Ojo Alamo		2616'	2792'	aquifer
Kirtland		2792'	2866'	
Fruitland		2866'	3206'	gas
Pictured Cliffs		3206'	3291'	gas
Lewis		3291'	3721'	gas
Intermediate TD		3541'		
Huerfanito Bentonite		3721'	4153'	gas
Chacra		4153'	4841'	gas
Massive Cliff House		4841'	4961'	gas
Menefee		4961'	5369'	gas
Point Lookout		5369'		gas
Total Depth		5769'		

Logging Program:

Mud Logs/Coring/DST -
Mud logs - none
Coring - none
DST - none
Cased hole - Gamma Ray, Cement bond - surface to TD

Mud Program:

<u>Interval- MD</u>	<u>Type</u>	<u>Weight</u>	<u>Vis.</u>	<u>Fluid Loss</u>
0- 200'	Spud	8.4-9.0	40-50	no control
200- 3541'	LSND	8.4-9.0	30-60	no control
3541- 5769'	Air/Mist/N2*	n/a	n/a	n/a

Pit levels will be visually monitored to detect gain or loss of fluid control.

*Nitrogen might be used in conjunction with or instead of air to prevent a down hole fire.

Casing Program (as listed, the equivalent, or better):

<u>Hole Size</u>	<u>Measured Depth</u>	<u>Csg Size</u>	<u>Weight</u>	<u>Grade</u>
12 1/4"	0' - 200'	9 5/8"	32.3#	H-40
8 3/4"	0' - 3541'	7"	20.0#	J-55
6 1/4"	3441' - 5769'	4 1/2"	10.5#	J-55

Tubing Program: 0' -5769' 2 3/8" 4.7# J-55

BOP Specifications, Wellhead and Tests:

Surface to Intermediate TD -

11" 2000 psi minimum double gate BOP stack (Reference Figure #1). After nipple-up prior to drilling out surface casing, rams and casing will be tested to 600 psi for 30 minutes.

Intermediate TD to Total Depth -

11" 2000 psi minimum double gate BOP stack (Reference Figure #1). After nipple-up prior to drilling out intermediate casing, rams and casing will be tested to 1500 psi for 30 minutes.

Surface to Total Depth -

2" nominal, 2000 psi minimum choke manifold (Reference Figure #3).

Completion Operations -

7 1/16" 2000 psi double gate BOP stack (Reference Figure #2). After nipple-up prior to completion, pipe rams, casing and liner top will be tested to 2000 psi for 15 minutes.

Wellhead -

9 5/8" x 7" x 2 3/8" x 2000 psi tree assembly.

General -

- Pipe rams will be actuated once each day and blind rams will be actuated once each trip to test proper functioning.
- An upper kelly cock valve with handle available and drill string valves to fit each drill string will be available on the rig floors at all times.
- BOP pit level drill will be conducted weekly for each drill crew.
- All BOP tests & drills will be recorded in daily drilling reports.
- Blind and pipe rams will be equipped with extension hand wheels.

Cementing:

9 5/8" surface casing - cement with 159 sx Class "H" cement with 1/4# flocele/sx and 3% calcium chloride (138 cu.ft. of slurry, 200% excess to circulate to surface). WOC 8 hrs. Test casing to 600 psi for 30 minutes.

Saw tooth guide shoe on bottom. Bowspring centralizers will be run in accordance with Onshore Order #2.

7" intermediate casing -

Lead w/368 sx 50/50 Class "G"/Trinity Light w/2.5% sodium metasilicate, 2% calcium chloride, 10# gilsonite/sx and 0.5# flocele/sx. Tail w/90 sx 50/50 Class "G" Poz w/2% gel, 2% calcium chloride, 5# gilsonite/sx, 0.1% antifoam and 0.25# flocele/sx (1065 cu.ft. of slurry, 100% excess to circulate to surface.) WOC minimum of 8 hours before drilling out intermediate casing. If cement does not circulate to surface, a CBL will be run to determine TOC. Test casing to 1500 psi for 30 minutes.

See attached alternative intermediate lead slurry.

7" intermediate casing alternative two stage: Stage collar at 2766'. First stage: cement with 182 sx Class "G" 50/50 poz w/2% gel, 5 pps Gilsonite, 2% calcium chloride, 0.25 pps Flocele, 0.1% antifoam. Second stage: 322 sx Class "G"/Trinity Light with 2.5% sodium metasilicate, 2% calcium chloride, 1/2 pps Flocele, 10 pps Gilsonite (1065 cu.ft., 100% excess to circulate to surface).

Cement nose guide shoe on bottom with float collar spaced on top of shoe joint. Bowspring centralizers spaced every other joint off bottom, to the base of the Ojo Alamo at 2792'. Two turbolating centralizers at the base of the Ojo Alamo at 2792'. Bowspring centralizers spaced every fourth joint from the base of the Ojo Alamo to the base of the surface casing.

4 1/2" Production Liner -

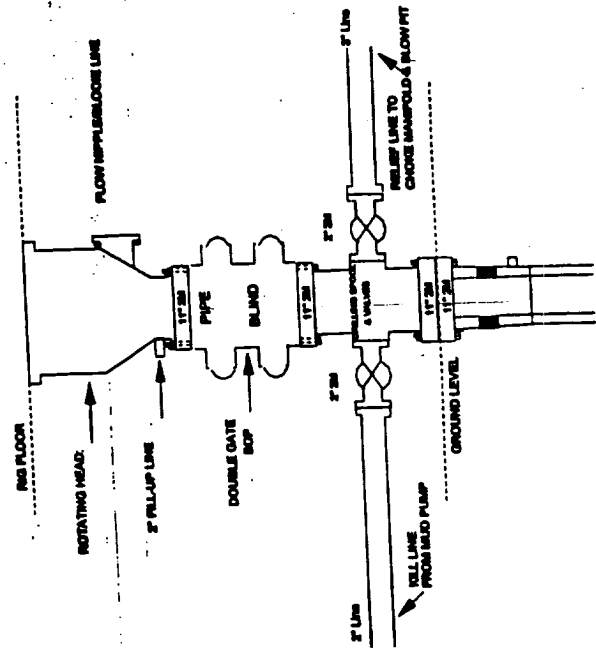
Cement to circulate liner top. Pump 234 sx 50/50 Class "G" Poz w/1/4# flocele/sx, 4.5% gel, 0.1% retardant, 5# gilsonite/sx, 0.25% fluid loss additive (335 cu.ft., 40% excess to circulate liner top). WOC a minimum of 18 hrs prior to completing.

Note: If open hole logs are run, cement volumes will be based on 25% excess over caliper volumes.

Burlington Resources

Drilling Rig

2000 psi System



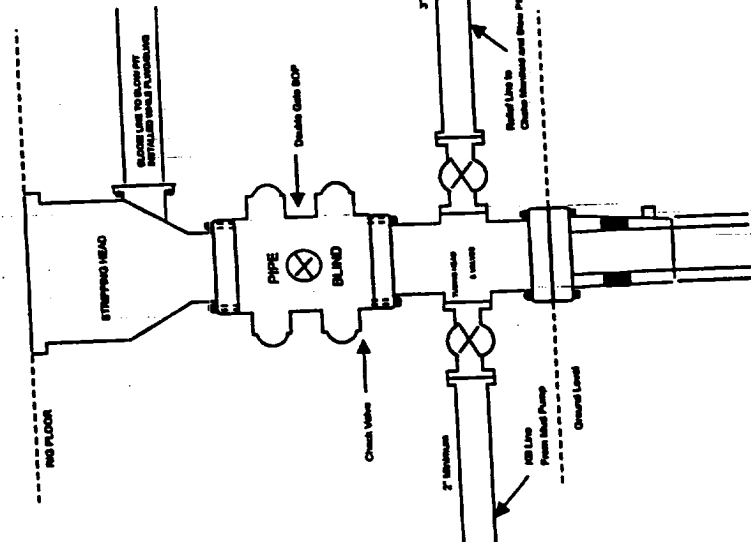
BOP Installation from Surface Casing Point to Total Depth. 1 1/2" Bore 10" Nominal, 2000 psi working pressure double gate BOP to be equipped with blind rams and pipe rams. A stripping head on top of ram preventer. All BOP equipment is 2,000 psi working pressure.

Figure #1

BURLINGTON RESOURCES

Completion/Workover Rig

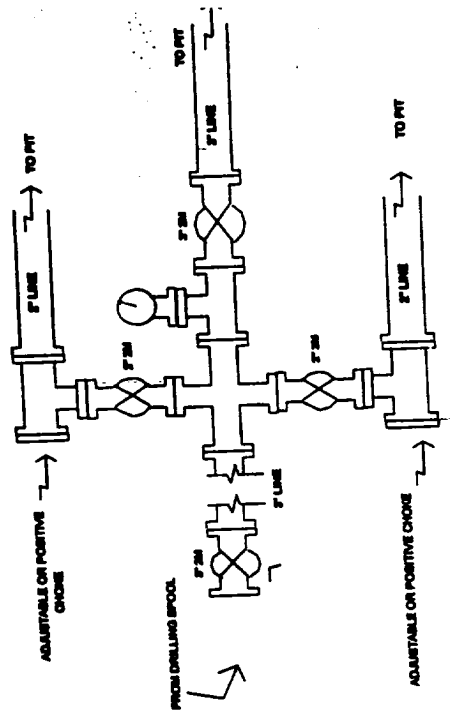
BOP Configuration
2,000 psi System



Minimum BOP Installation for all Completion/Workover Operations. 7-1/16" bore, 2000 psi minimum working pressure double gate BOP to be equipped with blind and pipe rams. A stripping head to be installed on the top of the BOP. All equipment is 2000 psi working pressure or greater.

Figure #2

Drilling Rig Choke Manifold Configuration 2000 psi System



Choke manifold installation from Surface Casing Point to Total Depth. 2,000psi working pressure equipment with two chokes.

Figure #3