

UNITED STATES
DEPARTMENT OF THE INTERIOR
BUREAU OF LAND MANAGEMENT

Form approved
Budget Bureau No. 1004-0136
Expires August 31, 1985

5. LEASE DESIGNATION AND SERIAL NO.

NMNM-03551

6. IF INDIAN, ALLOTTEE OR TRIBE NAME

7. UNIT AGREEMENT NAME

APD # 30-037-26765

8. FARM OR LEASE NAME

BREECH "E"

9. WELL NO.

83-R

10. FIELD AND POOL, OR WILDCAT

5. Blanco PICTURED CLIFFS

11. SEC. T. R. M. OR BLOCK AND SURVEY OR AREA

P SEC. 5-26N-6W

12. COUNTY OR PARISH

Rio Arriba

13. STATE

New Mexico

1a. TYPE OF WORK:

DRILL ☒ DEEPEN ☐ PLUG BACK ☐

b. TYPE OF WELL:

OIL WELL ☐ GAS WELL ☐ SINGLE ZONE ☐ MULTIPLE ZONE ☒

2. NAME OF OPERATOR

CAULKINS OIL COMPANY

3. ADDRESS OF OPERATOR

P.O. BOX 340
BLOOMFIELD, NM 87413 Ph. (505) 632-1544

4. LOCATION OF WELL (Report location clearly and in accordance with any State requirements)*

At surface

At proposed prod. zone 882' F/S 784' F/E (UNIT P)

14. DISTANCE IN MILES AND DIRECTION FROM NEAREST TOWN OR POSTOFFICE*

32 miles southeast of Blanco, NM post office

15. DISTANCE FROM PROPOSED*
LOCATION TO NEAREST PROPERTY
OR LEASE LINE, FT.

(Also to nearest drg. unit line, if any)

882'

16. NO. OF ACRES IN LEASE

2240

17. NO. OF ACRES ASSIGNED TO THIS WELL

160 5/8

18. DISTANCE FROM PROPOSED LOCATION*

TO NEAREST WELL, DRILLING COMPLETED,

OR APPLIED FOR, ON THIS LEASE, FT.

248'

19. PROPOSED DEPTH

3000'

20. ROTARY OR CABLE TOOLS

ROTARY

21. ELEVATIONS (Show whether DF, RT, GR, etc.)

6508 GR

22. APPROX. DATE WORK WILL START*

August 2001

23. PROPOSED CASING AND CEMENTING PROGRAM

SIZE OF HOLE	SIZE OF CASING	WEIGHT PER FOOT	SETTING DEPTH	QUANTITY OF CEMENT
12 1/4"	8 5/8"	24#	200'	107 sacks (149 cu. ft.)
6 1/4"	4 1/2"	10.5#	3000'	267 sacks (502 cu. ft.)

EXHIBITS attached as follows

"A" Location and Elevation Plat

"B" Ten-Point Compliance Program

"C" Blowout Preventer Schematic

"D" Multi-Point Requirements for APD

"E" Vicinity Maps - Access Roads

"F" Drill Rig Layout

"G" Production Facility Schematic

"H" Acreage Dedication Plat

"I" Archaeological Report

"J" Williams Field Services' Pipeline Plat

PROPOSAL TO DEEPEN WELL NO. 83-R, GR. 3160-3
and approval pursuant to 43 CFR 3160.4.

IN ABOVE SPACE DESCRIBE PROPOSED PROGRAM. If proposal is to deepen or plug back, give data on present productive zone and proposed new productive zone. If proposal is to drill or deepen directionally, give pertinent data on subsurface locations and measured and true vertical depths. Give blowout preventer program if any.

24.

SIGNED

Robert L. Vargus

TITLE SUPERINTENDENT

DATE

June 6, 2001

PERMIT NO.

APPROVAL DATE

7/10/01

APPROVED BY

Lee Ottoni

TITLE

DATE

This format is in lieu of Bureau of Land Management form 3160-3

HOLD C104 FOR Change of status to Breech E # 83

KV

DISTRICT I
P.O. Box 1980, Hobbs, N.M. 88241-1980

DISTRICT II
P.O. Drawer 00, Artesia, N.M. 88211-0719

DISTRICT III
1000 Rio Brazos Rd., Aztec, N.M. 87410

DISTRICT IV
PO Box 2088, Santa Fe, NM 87504-2088

State of New Mexico
Energy, Minerals & Natural Resources Department

OIL CONSERVATION DIVISION

P.O. Box 2088
Santa Fe, NM 87504-2088

Form C-102

Revised February 21, 1994

Instructions on back

Submit to Appropriate District Office

State Lease - 4 Copies

Fee Lease - 3 Copies

☐ AMENDED REPORT

WELL LOCATION AND ACREAGE DEDICATION PLAT

¹ API Number 30-039-26765		² Pool Code 72430	³ Pool Name S. B. L. P.C.
⁴ Property Code 2459	⁵ Property Name BREECH E		⁶ Well Number 83R
⁷ OGRD No. 3824	⁸ Operator Name CAULKINS OIL COMPANY		⁹ Elevation 6508

¹⁰ Surface Location

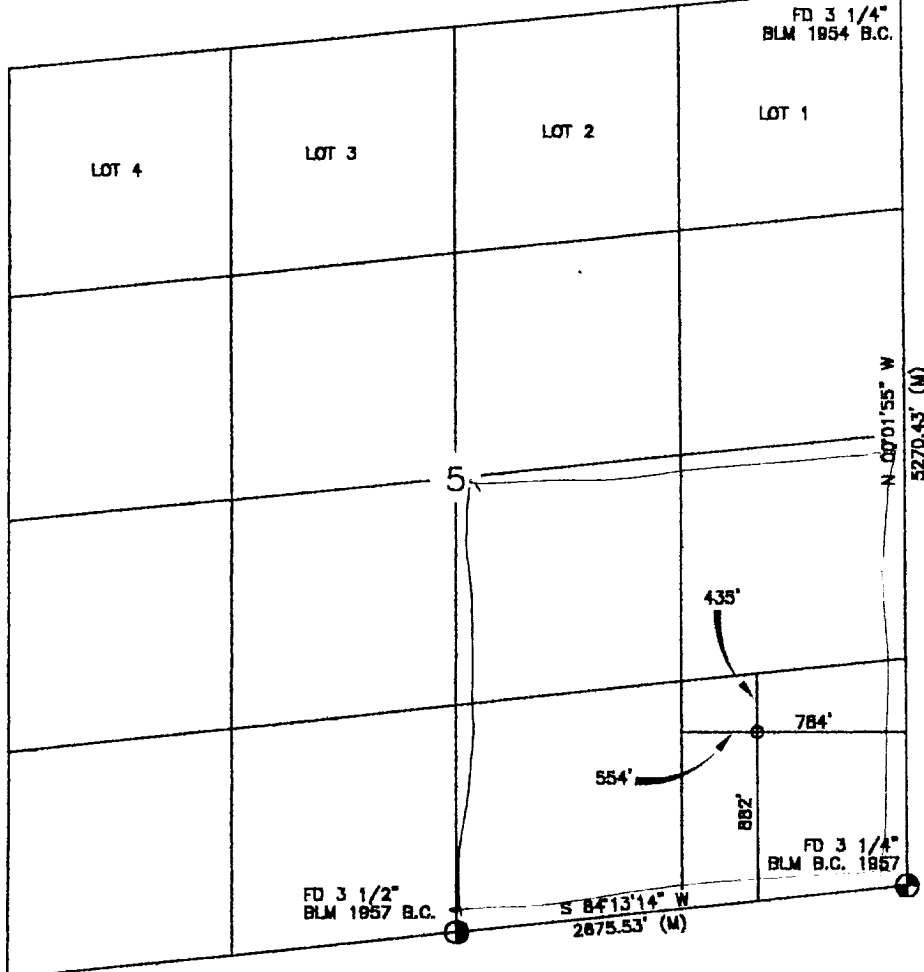
UL or lot no.	Section	Township	Range	Lot Idn	Feet from the	North/South line	Feet from the	East/West line	County
P	5	26-N	6-W		882	SOUTH	784	EAST	RIO ARIBBA

¹¹ Bottom Hole Location If Different From Surface

UL or lot no.	Section	Township	Range	Lot Idn	Feet from the	North/South line	Feet from the	East/West line	County
¹² Dedicated Acres 160 SE/4		¹³ Joint or Int'l		¹⁴ Consolidation Code		¹⁵ Order No.			

NO ALLOWABLE WILL BE ASSIGNED TO THIS COMPLETION UNTIL ALL INTERESTS HAVE BEEN CONSOLIDATED
OR A NON-STANDARD UNIT HAS BEEN APPROVED BY THE DIVISION

16



17 OPERATOR CERTIFICATION

I hereby certify that the information contained herein is true and complete to the best of my knowledge and belief

Robert L. Verquer
Signature
Robert L. Verquer
Printed Name
Superintendent
Title
7-23-01
Date

18 SURVEYOR CERTIFICATION

I hereby certify that the well location shown on this plat was plotted from field notes of actual surveys made by me or under my supervision and that the same is true and correct to the best of my belief.

11-67-80
Date of Survey
Signature and Seal of Professional Surveyor
8894
Certificate Number

EXHIBIT "E"

CAULKINS OIL COMPANY

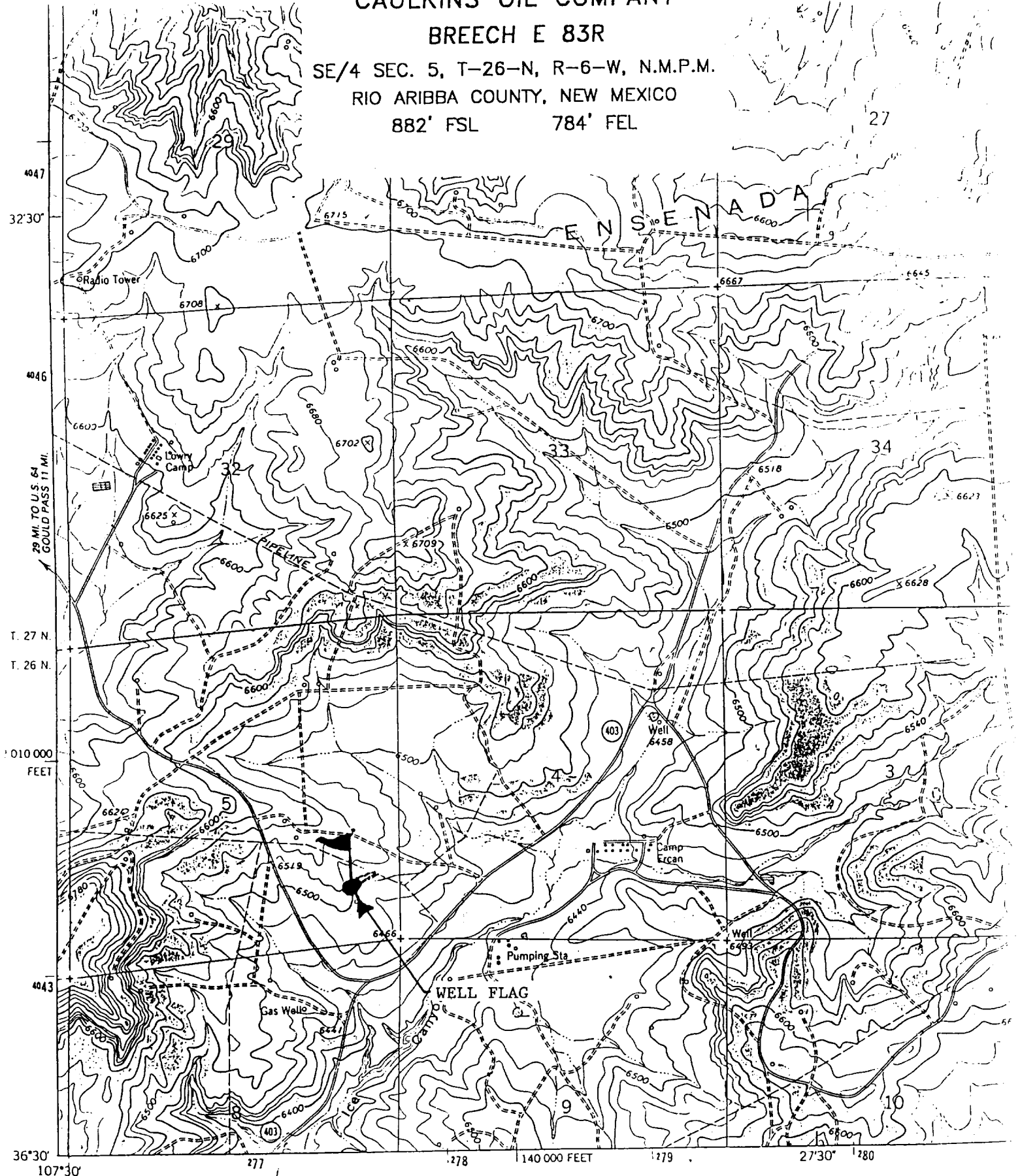
BREECH E 83R

SE/4 SEC. 5, T-26-N, R-6-W, N.M.P.M.

RIO ARIBBA COUNTY, NEW MEXICO

882' FSL

784' FEL



Mapped, edited, and published by the Geological Survey

Control by USGS and NOS/NOAA

Topography by photogrammetric methods from aerial photographs taken 1958 and 1962. Field checked 1963

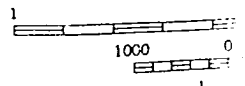
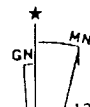


EXHIBIT "B"

TEN POINT COMPLIANCE PROGRAM

Caulkins Oil Company
Breach "E" 83-R
882' FSL & 784' FEL, Sec. 5, 26N, 6W
Rio Arriba County, New Mexico
Lease No. NM - 03551

1. The Geological Surface Formation is : San Jose.
2. The Estimated Tops of Important Geological Markers:

Ojo Alamo	2181'
Fruitland Coal	2678'
Picture Cliffs	2888'
TD	3000'

3. Estimated Depths and pressures of Anticipated Water, Oil, Gas or Minerals:

Substance	Formation	Depth	Pressure
Water	Alamo	2401'	0
Gas	Fruitland Coal	2883'	350
Gas	Pictured Cliffs	2965'	450

4. The proposed casing program will be as follows:

Depth	Hole Size	O.D.	Weight	Grade	Type	New/Used
0-200	12-1/4	8-5/8	24.00#	K55	ST&C	NEW
0-3000	6-1/4	4-1/2	10.50#	J55	ST&C	NEW

The proposed cement program will be as follows:

Surface: 107 sacks Type III with 1% CaCl
and 1/4# per sack cellophane flake.

VOLUME CALCULATIONS

YIELD 1.39 200 ft x 0.4127 cu-ft/ft with 80% excess = 149 cu-ft

PRODUCTION:

Cement will be run in one stage TD to surface as follows:

Cement through shoe at approx. 3000' with 194 sacks
Type III 35/65 poz + 6% gel (bentonite) + 1/4# /sk
cellophane flake followed by 73 sacks Type III
+ 1% CaCl + 1/4# /sk cellophane flake.

VOLUME CALCULATIONS

YIELD 2.07 2300 ft x 0.1026 cu-ft/ft with 70% excess = 401 cu-ft
YIELD 1.39 700 ft x 0.1026 cu-ft/ft with 40% excess = 101 cu-ft

EXHIBIT "C"

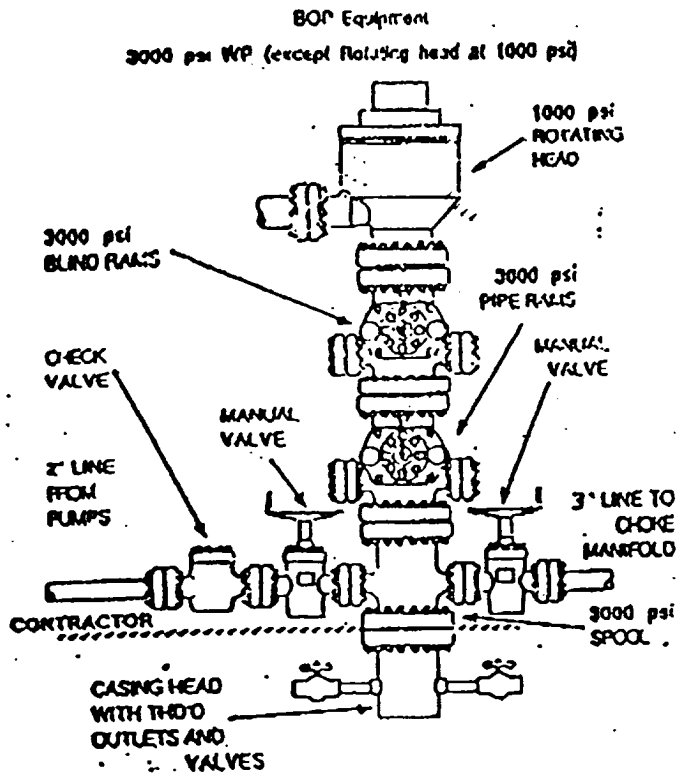


EXHIBIT "B" CHOKER MANIFOLD

