

District I
1625 N. French Dr., Hobbs, NM 88240
District II
1301 W. Grand Avenue, Artesia, NM 88210
District III
1000 Rio Brazos Road, Aztec, NM 87410
District IV
1220 S. St. Francis Dr., Santa Fe, NM 87505

State of New Mexico
Energy Minerals and Natural Resources

Form C-101
Revised March 17, 1999

Oil Conservation Division
1220 South St. Francis Dr.
Santa Fe, NM 87505

Submit to appropriate District Office
State Lease - 6 Copies
Fee Lease - 5 Copies

☐ AMENDED REPORT

APPLICATION FOR PERMIT TO DRILL, RE-ENTER, DEEPEN, PLUGBACK OR ADD A ZONE

¹ Operator Name and Address Rio Chama Petroleum, Inc. P. O. Box 3027 Pagosa Springs, CO 81147		² GRID Number 160560
³ Property Code 25227 30400	⁵ Property Name Bridge Core	⁴ API Number 039-27057
		⁶ Well No. 1

⁷ Surface Location									
UL or lot no.	Section	Township	Range	Lot Idn	Feet from the	North/South line	Feet from the	East/West line	County
J	28	26N	2W		1605	South	2223	East	Rio Arriba

⁸ Proposed Bottom Hole Location If Different From Surface									
UL or lot no.	Section	Township	Range	Lot Idn	Feet from the	North/South line	Feet from the	East/West line	County
⁹ Proposed Pool 1 Basin Fruitland Coal					¹⁰ Proposed Pool 2				

¹¹ Work Type Code N	¹² Well Type Code CORE	¹³ Cable/Rotary Rotary/Coring	¹⁴ Lease Type Code P	¹⁵ Ground Level Elevation
¹⁶ Multiple N	¹⁷ Proposed Depth 3750	¹⁸ Formation Fruitland Coal	¹⁹ Contractor Unknown	²⁰ Spud Date Late August 2002

²¹ Proposed Casing and Cement Program					
Hole Size	Casing Size	Casing weight/foot	Setting Depth	Sacks of Cement	Estimated TOC
9 7/8	8 5/8	24	300'		Surface

²² Describe the proposed program. If this application is to DEEPEN or PLUG BACK, give the data on the present productive zone and proposed new productive zone.

Describe the blowout prevention program, if any. Use additional sheets if necessary.

It is proposed to drill a well for the purpose of obtaining a core from the bottom of the Ojo Alamo (3575') to the top of the Pictured Cliffs formation (3775'). The well will be drilled on the existing pad for the Bridge Corn #1 well that is located in 26N02W28J. Plan to drill a 9 7/8" hole and set 300' of 8 5/8" OD, 24# surface casing; then plan to rotary drill a 7 7/8" hole to bottom of the Ojo Alamo, set a temporary 6" liner and use a core rig to take core down to top of Pictured Cliffs. Plan to use mud as drilling medium. BOP's will be used during entire drilling operation. Hole will be completely filled with cement upon completion of coring operations and P&A marker installed. Pad will be restored when the existing well (Bridge Corn #1) is P&A'd.

²³ I hereby certify that the information given above is true and complete to the best of my knowledge and belief.

Signature: *Jeffrey W. Hudson*

Printed name: Jeffrey W. Hudson

Title: Senior Engineer

Date: 7/11/02

Phone: 970-264-0170

OIL CONSERVATION DIVISION

Approved by:

Title: *Deputy Oil & Gas Inspector, Dist. 89*

Approval Date: JUL 25 2002

Expiration Date: JUL 25 2003

Conditions of Approval:

Attached ☐ Notify OCID 24 hrs prior to plugging

New Mexico Oil Conservation Division
C-102 Instructions

IF THIS IS AN AMENDED REPORT, CHECK THE BOX LABELED "AMENDED REPORT" AT THE TOP OF THIS DOCUMENT.

Surveyors shall use the latest United States government survey or dependent resurvey. Well locations will be in reference to the New Mexico Principal Meridian. If the land is not surveyed contact the appropriate OCD district office. Independent subdivision surveys will not be acceptable.

open within this pool.

Show all lots, lot numbers, and their respective acreage.

If more than one lease has been dedicated to this completion, outline each one and identify the ownership as to both working interest and royalty.

1. The OCD assigned API number for this well
2. The pool code for this (proposed) completion
3. The pool name for this (proposed) completion
4. The property code for this (proposed) completion
5. The property name (well name) for this (proposed) completion
6. The well number for this (proposed) completion
7. Operator's OGRID number
8. The operator's name
9. The ground level elevation of this well
10. The surveyed surface location of this well measured from the section lines NOTE: If the United States government survey designates a Lot Number for this location use that number in the 'UL or lot no.' box. Otherwise use the OCD unit letter.
11. Proposed bottom hole location. If this is a horizontal hole indicate the location of the end of the hole.
12. The calculated acreage dedicated to this completion to the nearest hundredth of an acre
13. Put a Y if more than one completion will be sharing this same acreage or N if this is the only completion on this acreage
14. If more than one lease of different ownership has been dedicated to the well show the consolidation code from the following table:

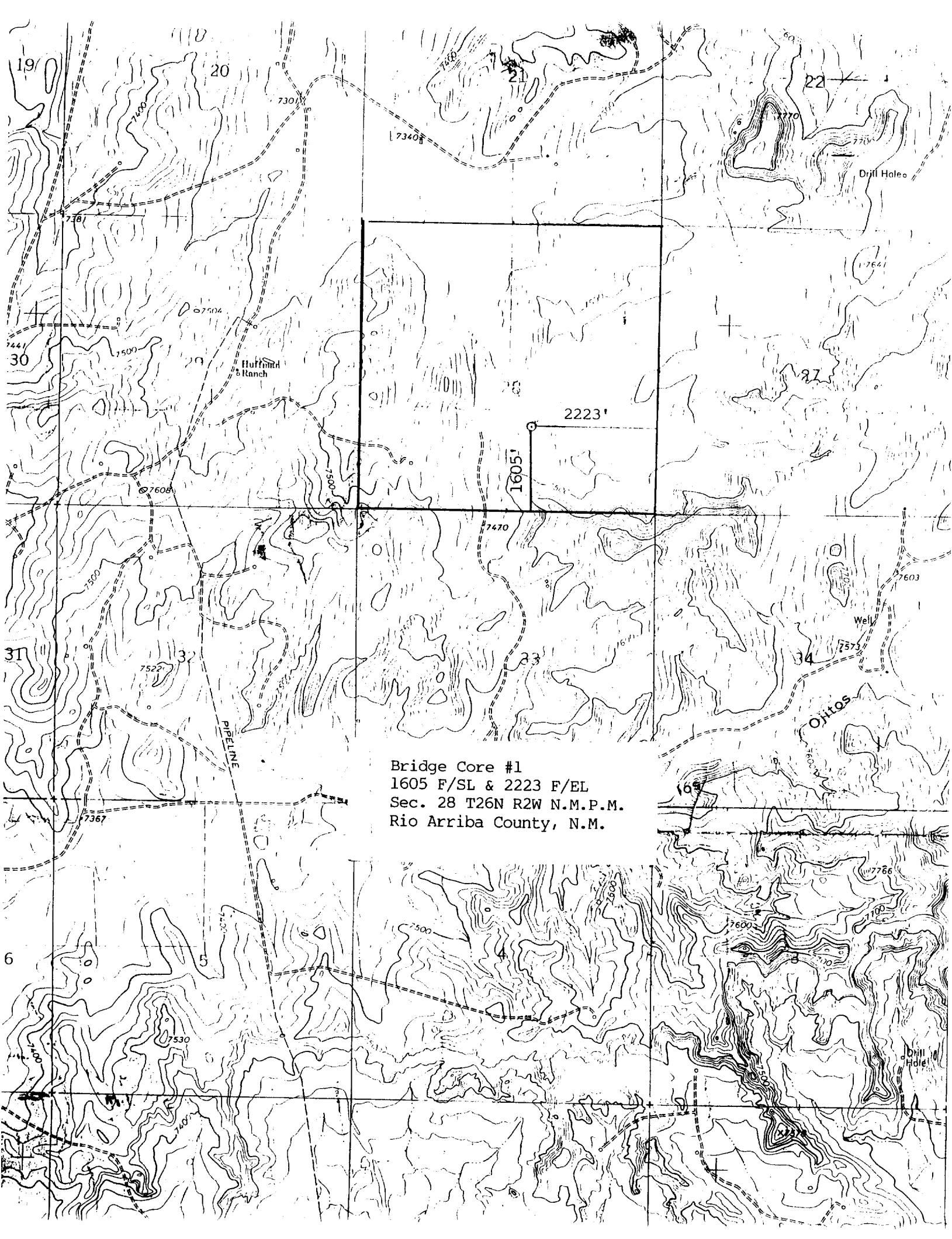
C	Communitization
U	Unitization
F	Forced pooling
O	Other
P	Consolidation pending

17. The signature, printed name, and title of the person authorized to make this report, and the date this document was signed.

18. The registered surveyors certification. This section does not have to be completed if this form has been previously accepted by the OCD and is being filed for a change of pool or dedicated acreage.

NO ALLOWABLE WILL BE ASSIGNED TO THIS COMPLETION UNTIL ALL INTERESTS HAVE BEEN CONSOLIDATED OR A NON-STANDARD UNIT HAS BEEN APPROVED BY THE DIVISION!

15. Write in the OCD order(s) approving a non-standard location, non-standard spacing, or directional or horizontal drilling
16. This grid represents a standard section. You may superimpose a non-standard section over this grid. Outline the dedicated acreage and the separate leases within that dedicated acreage. Show the well surface location and bottom hole location, if it is directionally drilled, with the dimensions from the section lines in the cardinal directions. (Note: A legal location is determined from the perpendicular distance to the edge of the tract.) If this is a high angle or horizontal hole show that portion of the well bore that is



Bridge Core #1
1605 F/SL & 2223 F/EL
Sec. 28 T26N R2W N.M.P.M.
Rio Arriba County, N.M.