

Distribution: O+4 (BLM); 1-Well File; 1-Crystal; 1-Earleen

Form 3160-5
(June 1990)

UNITED STATES
DEPARTMENT OF THE INTERIOR
BUREAU OF LAND MANAGEMENT

FORM APPROVED
Budget Bureau No. 1004-0135
Expires: March 31, 1993

SUNDRY NOTICES AND REPORTS ON WELLS

Do not use this form for proposals to drill or to deepen or reentry to a different reservoir
Use "APPLICATION FOR PERMIT-" for such proposals

SUBMIT IN TRIPLICATE

1. Type of Well

☒ Oil Well ☐ Gas Well ☐ Other

2. Name of Operator

MERRION OIL & GAS CORPORATION

3. Address and Telephone No.

P. O. Box 840, Farmington, New Mexico 87499 (505) 327-9801

4. Location of Well (Footage, Sec., T., R., M., or Survey Description)

**790' FSL & 890' FWL
Section 35, T25N, R8W**

5. Lease Designation and Serial No.

NM-13751

6. If Indian, Allottee or Tribe Name

7. If Unit or CA, Agreement Designation

8. Well Name and No.

South Huerfano No. 1

9. API Well No.

30-045-05177

10. Field and Pool, or Exploratory Area

Dufers Point Gallup-Dakota

11. County or Parish, State

San Juan, New Mexico

12. CHECK APPROPRIATE BOX(s) TO INDICATE NATURE OF NOTICE, REPORT, OR OTHER DATA

TYPE OF SUBMISSION

TYPE OF ACTION

☒ Notice of Intent

☐ Subsequent Report

☐ Final Abandonment Notice

☒ Abandonment

☐ Recompletion

☐ Plugging Back

☐ Casing Repair

☐ Altering Casing

☐ Other

☐ Change of Plans

☐ New Construction

☐ Non-Routine Fracturing

☐ Water Shut-Off

☐ Conversion to Injection

☐ Dispose Water

(Note: Report results of multiple completion on Well
Completion or Recompletion Report and Log form.)

13. Describe Proposed or Completed Operations (Clearly state all pertinent details, and give pertinent dates, including estimated date of starting any proposed work. If well is directionally drilled, give subsurface locations and measured and true vertical depths for all markers and zones pertinent to this work.)

Merrion Oil & Gas Corporation requests BLM's approval to plug and abandon the South Huerfano No. 1
in accordance with the attached procedure. A wellbore profile is included for your information.

RECEIVED

SEP 1 0 1993

**OIL CON. DIV.
DIST. 3**

**SEE ATTACHED FOR
CONDITIONS OF APPROVAL**

14. I hereby certify that the foregoing is true and correct

Signed Esther J. Greyeyes
Esther J. Greyeyes

Title Drilg & Oper Tech

Date 8/31/93

(This space for Federal or State office use)

Approved by _____

Title _____

Date _____

Conditions of approval, if any: _____

APPROVED

SEP 08 1993

Title 18 U.S.C. Section 1001, makes it a crime for any person knowingly and willfully to make to any department or agency of the United States any false or fraudulent statements or representations as to any matter within its jurisdiction.

DISTRICT MANAGER

*See Instruction on Reverse Side

NMOOD

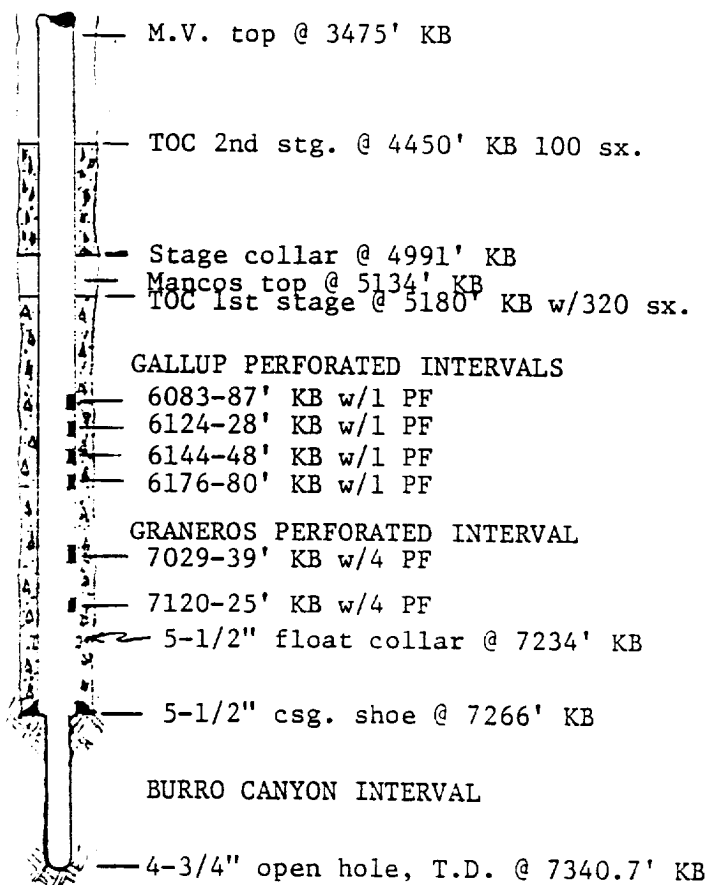
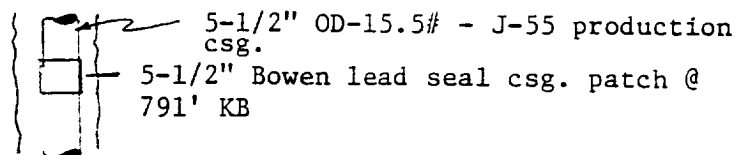
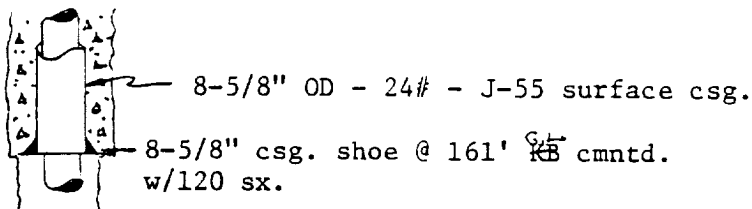
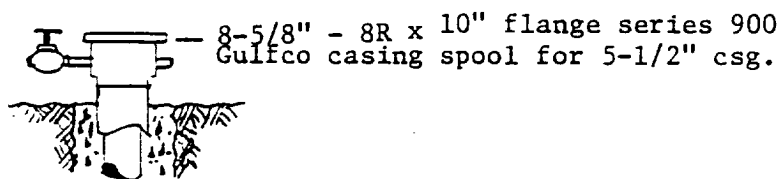
August 25, 1993

South Huerfano #1
SW, SW, Sec. 35, T25N, R8W
San Juan, New Mexico

PLUG AND ABANDONMENT PROCEDURE:

1. MOL and RUSU. Comply to all NMOC and BLM safety rules and regulations. Blow well down; kill with water if necessary. POH and LD rods and pump. ND wellhead and NU BOP.
2. POH and tally 2-3/8" tubing, inspect; if necessary LD and PU tubing work string. RIH with open ended tubing and tag TD.
3. Plug #1 from TD to 6962' with 85 sxs Class B cement (100% excess; open hole, Dakota perfs and top). POH and WOC.
4. RIH and tag cement. Mix and spot approximately 20 bbls. 8.4# mud from top of cement to 6198'; POH to 6198'.
5. Plug #2 from 6198' to 6005' with 44 sxs Class B cement (Gallup perfs and top). POH and WOC. RIH and tag cement. Circulate well with water; pressure test casing to 500#. Mix and spot approximately 50 bbls. 8.4# mud from top of cement to 3525'. POH with tubing.
6. Perforate 4 holes at 3525' (50' below MV top). PU 5-1/2" cement retainer and RIH; set at 3475'; pressure test tubing to 1000#; establish rate into holes.
7. Plug #3 from 3525' to 3425' with 46 sxs Class B cement, squeeze 29 sxs outside casing and leave 17 sxs inside (100% outside excess, 50% inside). POH to 3550'; mix and spot 16 bbls 8.4# mud from 3550' to 2700'; POH with setting tool.
8. Perforate 4 holes at 2700' (50' below PC top). PU 5-1/2" cement retainer and RIH; set at 2650'; establish rate.
9. Plug #4 from 2700' to 1900' with 298 sxs Class B cement, squeeze 202 sxs outside casing and leave 96 sxs inside (100% outside excess, capacity plus 50' fill inside). POH to 1850'; mix and spot 40 bbls 8.4# mud from 1850' to 211'; POH with setting tool.
10. Perforate 2 holes at 211'. Establish circulation out bradenhead. Plug #5 from 211' to surface with Class B cement, circulate good cement out bradenhead, approx. 60 sxs. Shut in well and WOC. ND BOP and cut off wellhead below ground level and install dry hole marker with 10 sxs cement. RD and MOSU.
11. Restore location per BLM stipulations.

WELL PROFILE



MERRION~BAYLESS		DRAWN BY	SSDunn
		REVISED	
APPROVED BY			
SCALE	none	DATE	11-03-76
SOUTH HUERFANO #1			
Sec. 35, T25N, R8W, San Juan County, New Mexico		DRAWING NUMBER SH1-76	

PRODUCTION STRING:

224 jts. of 2-3/8",
4.7#, EUE w/down hole
separator @ 7078' KB

FRACED GALLUP with:

15,000 lb. 20/40 sand
595 Bbls. Adomite-Oil

IN REPLY REFER TO:
(07337)

UNITED STATES DEPARTMENT OF THE INTERIOR

BUREAU OF LAND MANAGEMENT
FARMINGTON DISTRICT OFFICE
1235 La Plata Highway
Farmington, New Mexico 87401

Attachment to Notice of

Re: Permanent Abandonment

Intention to Abandon

Well: 1 South Huerfano

CONDITIONS OF APPROVAL

1. Plugging operations authorized are subject to the attached "General Requirements for Permanent Abandonment of Wells on Federal and Indian Leases."
2. **Mike Flaniken** with the Farmington Office is to be notified at least 24 hours before the plugging operations commence (505) 599-8907.
3. The following modifications to your plugging program are to be made (when applicable):

- 1.) *Extend Gallup cement plug from 6230' to 6005'.*
- 2.) *Move Mesquite Plug from 3525'-3425' to 4252'-4152'. (Top of MV @ 4202') Put @ 4252'.*
- 3.) *Extend PC, Fr and Ojo Alamo Plug from 2700' to 1857'. (Top of Ojo Alamo - 1907')*
- 4.) *Perforate @ 405', place a cement plug from 405' to 305' inside & outside the casing plus 100% excess. (Nacimiento Top - 355')*

Office Hours: 7:45 a.m. to 4:30 p.m.