

NEW MEXICO OIL CONSERVATION COMMISSION
Santa Fe, New Mexico

NOTICE OF INTENTION TO DRILL OR RECOMPLETE

Notice must be given to the District Office of the Oil Conservation Commission and approval obtained before drilling or recompleting begins. If changes in the proposed plan are considered advisable, a copy of this notice showing such changes will be returned to the sender. Submit this notice in **QUINTUPLICATE**. One copy will be returned following approval. See additional instructions in Rules and Regulations of the Commission. **If State Land submit 6 Copies**

Farmington, New Mexico

(Place)

February 29, 1956

(Date)

OIL CONSERVATION COMMISSION
SANTA FE, NEW MEXICO

Gentlemen:

You are hereby notified that it is our intention to commence the (Drilling) (~~Recompletion~~) of a well to be known as

El Paso Natural Gas Company

(Company or Operator)

Kelly State

(Lease)

4

, Well No., in **K** The well is

(Unit)

located **1980** feet from the **South** line and **1979** feet from the

West

Line of Section **16**, T. **25N**, R. **12W**, NMPM.

(GIVE LOCATION FROM SECTION LINE) **Dist. Gallup Wildcat** Pool, **San Juan** County

If State Land the Oil and Gas Lease is No. **E-6597**

If patented land the owner is

Address

We propose to drill well with drilling equipment as follows: **Rotary tools from surface to total depth using mud circulation.**

The status of plugging bond is **Statewide**

Drilling Contractor

We intend to complete this well in the **Gallup**

formation at an approximate depth of **4840** feet.

CASING PROGRAM

We propose to use the following strings of Casing and to cement them as indicated:

Size of Hole	Size of Casing	Weight per Foot	New or Second Hand	Depth	Sacks Cement
13 3/4"	9 5/8"	25.4#	New	170'	125
8 3/4"	5 1/2"	15.50#	New	4840'	250

If changes in the above plans become advisable we will notify you immediately.

ADDITIONAL INFORMATION (If recompleting give full details of proposed plan of work.) **All possible productive zones in the Gallup formation will be perforated and sandoil fractured.**

Approved....., 19.....
Except as follows:

FEB 29 1956

Sincerely yours,

El Paso Natural Gas Company

(Company or Operator)

By.....

Position **Petroleum Engineer**

Send Communications regarding well to

Name **E. J. Coel**

Address **Box 997, Farmington, N.M.**

OIL CONSERVATION COMMISSION

By.....

A. R. Kendrick

COMPANY EL PASO NATURAL GAS COMPANY

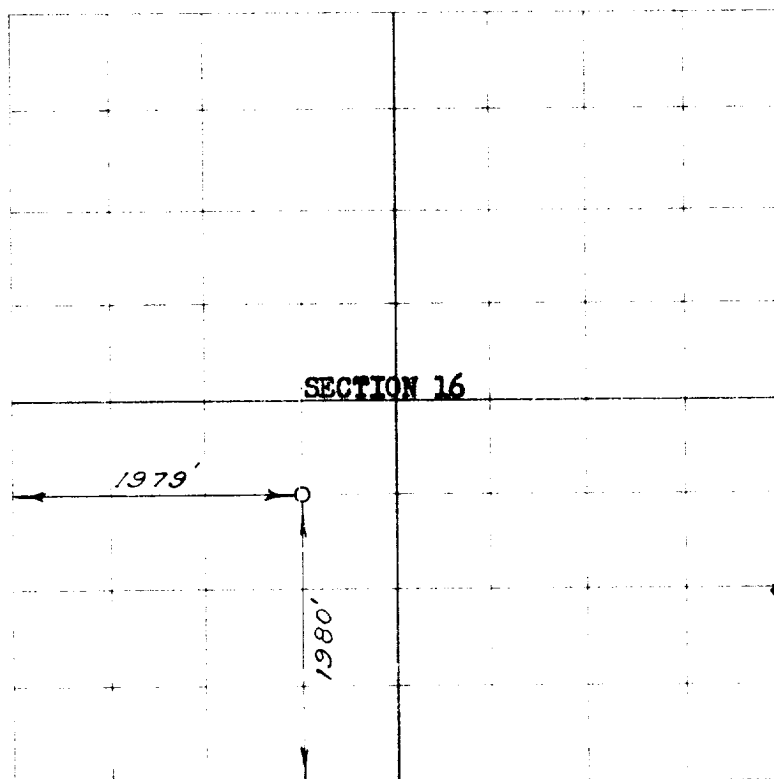
Well Name & No. KELLY STATE NO. 4 Lease No. E 6597

Location 1980 FEET FROM THE SOUTH LINE, 1979 FEET FROM THE WEST LINE

Bearing CENTER OF THE NE/4 OF THE SW/4

Sec. 16, T. 25, R. 12, N.M.P.M., SAN JUAN COUNTY, NEW MEXICO

Ground Elevation 6260⁴¹



Scale - 4 inches equal 1 mile

Surveyed FEBRUARY 20, 1956

This is to certify that the above plat was prepared from field notes of actual surveys made by me or under my supervision and that the same are true and correct to the best of my knowledge and belief.

E. O. Walker

Registered Professional
Engineer and Land Surveyor

Cert:

Plat number, New Mexico

40.0 ACRES, NE/4 SW/4 SECTION (PLAT)

OIL CONSERVATION COMMISSION		
ATTORNEY GENERAL		
DEPT. OF COMMERCE		
...		
...	1	
...	1	
...	1	
...	2	
...	1	
...	1	✓

NEW MEXICO
OIL CONSERVATION COMMISSION

Form C-128

Well Location and/or Gas Proration Plat

Date February 29, 1956

Operator El Paso Natural Gas Company Lease Kelly State

Well No. 4 Section 16 Township 25N Range 12W NMPM

Located 1980 Feet From South Line, 1979 Feet From West Line,

San Juan County, New Mexico. G. L. Elevation 6260

Name of Producing Formation Gallup Pool Wildcat Dedicated Acreage 40

(Note: All distances must be from outer boundaries of Section)

	E-6597		

SCALE: 1"=1000'

1. Is this Well a Dual Comp. ? Yes No X.
2. If the answer to Question 1 is yes, are there any other dually completed wells within the dedicated acreage? Yes No .

This is to certify that the above plat was prepared from field notes of actual surveys made by me or under my supervision and that the same are true and correct to the best of my knowledge and belief.

Name Mel W. Waga
Position Petroleum Engineer
Representing El Paso Natural Gas Company
Address Box 997, Farmington, N.M.

Date Surveyed 2-20-56
Registered Professional Engineer and/or
Land Surveyor

OIL CONSERVATION COMMISSION
ACTING DIRECTOR

ACTING DISTRICT OFFICE

[Faint, illegible text]

4

the 1990s, the number of people in the world who are illiterate has increased from 1.2 billion to 1.5 billion. The number of illiterate people in the world is expected to reach 1.7 billion by the year 2015. The number of illiterate people in the world is expected to reach 1.7 billion by the year 2015. The number of illiterate people in the world is expected to reach 1.7 billion by the year 2015.

100

1

✓

7

1

...