

NEW MEXICO  
OIL CONSERVATION COMMISSION

Form C-128

Well Location and/or Gas Proration Plat

Date September 10, 1957

Operator Amerada Petroleum Corporation Lease Salinas White

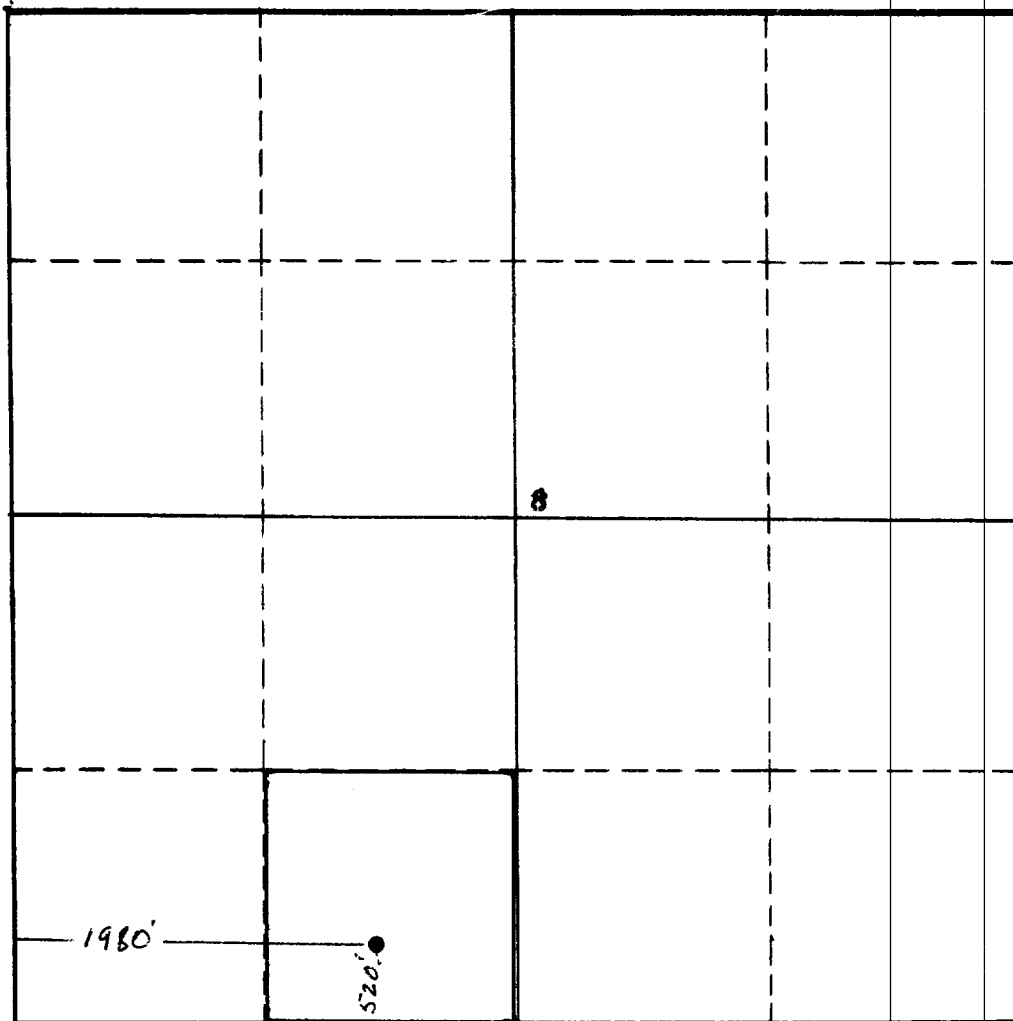
Well No. 1 Section 8 Township 25 North Range 12 West NMPM

Located 520' Feet From South Line, 1980' Feet From West Line,

San Juan County, New Mexico. G. L. Elevation \_\_\_\_\_

Name of Producing Formation Gallup Pool Bisti Lower / Gallup Dedicated Acreage 40

(Note: All distances must be from outer boundaries of Section)



NOTE

This section of form is to be used for gas wells only.



SCALE: 1"=1000'

1. Is this Well a Dual Comp. ? Yes    No X
2. If the answer to Question 1 is yes, are there any other dually completed wells within the dedicated acreage? Yes    No

Name D. F. Furrer  
Position Foreman  
Representing Amerada Petroleum Corporation  
Address Box E - Bloomfield, New Mexico

This is to certify that the above plat was prepared from field notes of actual surveys made by me or under my supervision and that the same are true and correct to the best of my knowledge and belief.

Date Surveyed June 20, 1956

Registered Professional Engineer and/or Land Surveyor



OIL CONSERVATION COMMISSION		
AZTEC DISTRICT OFFICE		
No. Copies Received	3	
DISTRIBUTION		
	NO. RECEIVED	
Director	1	
Asst. Dir.	1	
Migration Office		
State Land Office		
U. S. G. S.		
Transporter		
File	1	✓