

submitted in lieu of Form 3160-5

UNITED STATES
DEPARTMENT OF THE INTERIOR
BUREAU OF LAND MANAGEMENT

Sundry Notices and Reports on Wells

1. Type of Well
GAS

2. Name of Operator
Meridian Oil Inc.

3. Address & Phone No. of Operator
PO Box 4289, Farmington, NM 87499 (505) 326-9700

4. Location of Well, Footage, Sec., T, R, M
1650' FNL, 990' FEL Sec. 12, T-25-N, R-8-W, NMPM

5. Lease Number
SF-080375A

6. If Indian, All. or
Tribe Name

7. Unit Agreement Name

8. Well Name & Number
Sheets A #4

9. API Well No.

10. Field and Pool
Ballard Pic. Cliffs

11. County and State
San Juan Co, NM

12. CHECK APPROPRIATE BOX TO INDICATE NATURE OF NOTICE, REPORT, OTHER DATA

Type of Submission	Type of Action
<input checked="" type="checkbox"/> Notice of Intent	<input checked="" type="checkbox"/> Abandonment
<input type="checkbox"/> Subsequent Report	<input type="checkbox"/> Recompletion
<input type="checkbox"/> Final Abandonment	<input type="checkbox"/> Plugging Back
	<input type="checkbox"/> Casing Repair
	<input type="checkbox"/> Altering Casing
	<input type="checkbox"/> Other -
	<input type="checkbox"/> Change of Plans
	<input type="checkbox"/> New Construction
	<input type="checkbox"/> Non-Routine Fracturing
	<input type="checkbox"/> Water Shut off
	<input type="checkbox"/> Conversion to Injection

13. Describe Proposed or Completed Operations

It is intended to plug and abandon the subject well per the attached procedure.

RECEIVED
MAY 13 1992
OIL CON. DIV.
DIST. 3

RECEIVED
BLM
92 MAY -7 AM 10:06
019 FARMINGTON, N.M.

14. I hereby certify that the foregoing is true and correct.

Signed Neggy Bradfield (DB) Title Regulatory Affairs Date 5-6-92

(This space for Federal or State Office use)

APPROVED BY _____ Title _____

CONDITION OF APPROVAL, if any:

APPROVED

DATE 12 1992

AREA MANAGER

NMOCD

**Sheets A #4
P&A Procedure**

Retainers:

- * - 5 1/2" Cement Retainer, as needed.

Cement Requirements:

- * - 254 sx Class "B" with 2% CaCl₂ as required (15.6 ppg, 1.18 ft³/sk, 5.20 gal/sk).

PROCEDURE:

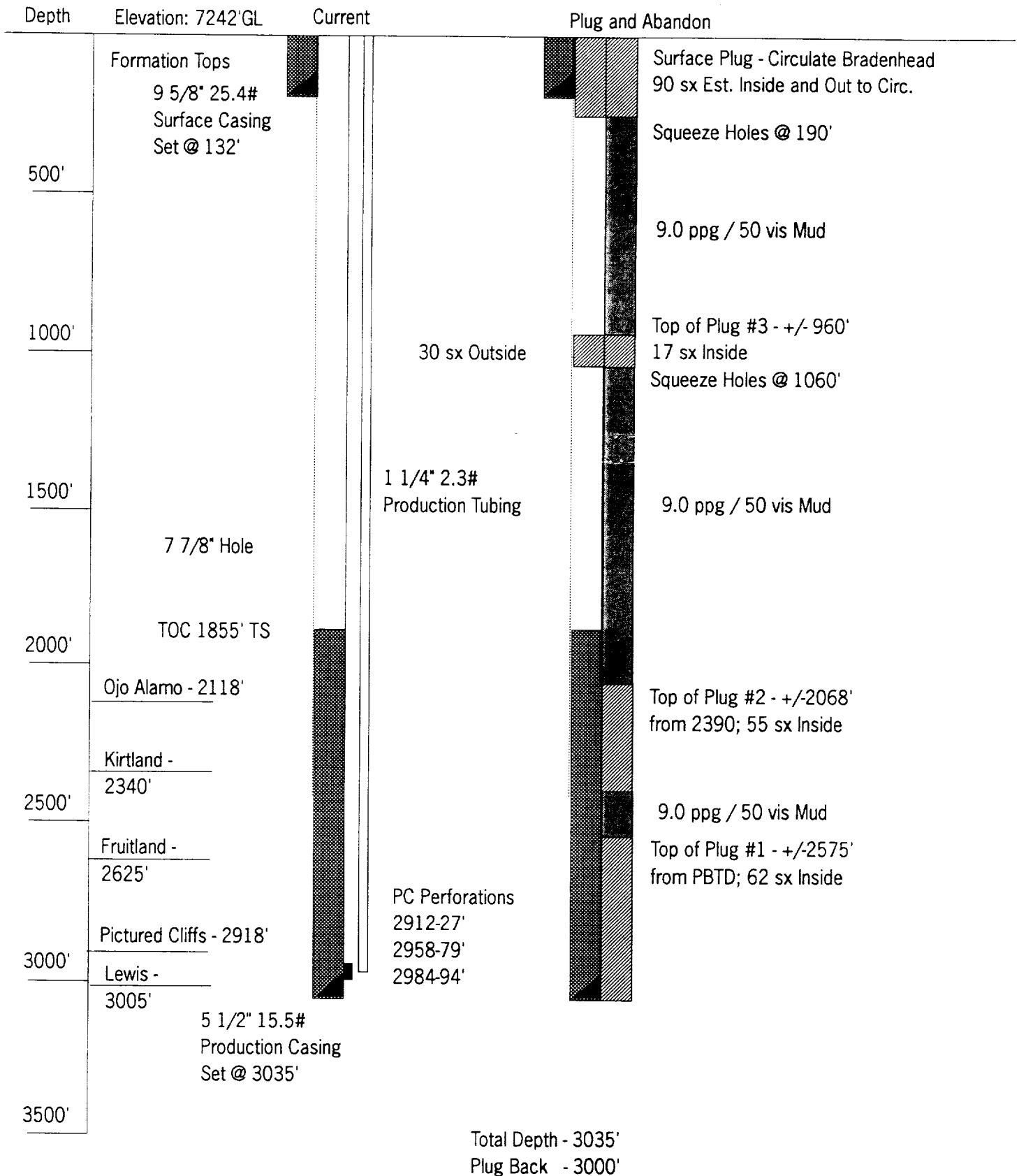
Prior to move on test rig anchors and repair if necessary. Construct reserve pit.

Notify Farmington BLM (326-6201) 24 hours prior to commencing operations.

Comply with all MOI, federal and state regulations.

1. MOL& RU. If necessary kill well with water (well has 0 psi on tubing and casing). ND wellhead and NU BOP. Test BOP.
2. TOH with 1 1/4" tubing. Visual inspect tubing for defects and replace bad joints. TIH open-ended with 1 1/4" tubing to PBTD at 3000'. Clear tubing with fresh water (one tubing volume minimum).
3. Pump 5 bbls water ahead and spot 62 sx Class "B" cement with 2% CaCl₂ on bottom down tubing (73 ft³ for 425' plug inside casing with 100% excess to 100' above top perforation and 50% excess to 50' above Fruitland top). TOH with tubing. Wait on cement a minimum of two hours. TIH to tag top of first plug to verify depth. Close pipe rams and pressure test casing to minimum of 500 psi.
4. Spot 10 bbls of 9.0 ppg / 50 vis mud on bottom. TOH to 2390'. Pump 5 bbls water ahead and spot 55 sx of Class "B" cement at 2390' down tubing (65 ft³ for 322' plug inside casing with 50% excess to 50' above and below Ojo Alamo).
5. TOH to 1900'. Spot 30 bbls of 9.0 ppg / 50 vis mud. TOH with tubing.
6. Pressure test casing below blind rams to 500 psi minimum. RU wireline. Perforate two squeeze holes at 1060' and RD. Cement as follows:
 - A. If pressure held, TIH with workstring to 1010'. Open bradenhead and close pipe rams. Establish rate, pump 5 bbls water ahead and cement down tubing with 36 sx of Class "B" cement. Close bradenhead and open pipe rams. Spot 11 sx Class "B" with 2% CaCl₂ in casing. (47 sx, 55 ft³ total for 100' inside/outside plug with 100% excess in annulus and 50% excess in casing). TOH with tubing. Wait on cement a minimum of two hours. TIH to tag top of plug to verify depth. Spot 30 bbls of 9.0 ppg / 50 vis mud on top of plug and TOH.
 - B. If pressure did not hold, TIH with 5 1/2" casing scraper on 2 3/8" tubing to 1100', TOH. TIH with 5 1/2" cement retainer on 2 3/8" tubing and set retainer at 1010'. Establish rate into squeeze holes, pump 5 bbls water ahead and cement with 36 sx of Class "B" cement (6 sx, 7.1 ft³ below retainer, plug requirements same as in A.). Displace cement to top of retainer. Pull out of retainer and spot 11 sx of cement (97") on top of retainer. TOH to 850' and circulate hole with 30 bbls of 9.0 ppg / 50 vis mud. TOH and lay down workstring.
7. RU wireline. Perforate two squeeze holes at 190' and RD.
8. Rig up on 5 1/2" casing to cement. Establish rate into squeeze holes. Pump 5 bbls water ahead and cement with +/- 90 sx of Class "B" cement to circulate bradenhead (190' surface plug inside and outside). Circulate until good cement returns thru bradenhead.
9. Cut off wellhead and install dry hole marker.
10. Release rig and move off.

Sheets A #4
 Ballard Pictured Cliffs
 SW/NW/4 Sec.12, T25N, R08W
 Wellbore Schematic



submitted in lieu of Form 3160-5

UNITED STATES
DEPARTMENT OF THE INTERIOR
BUREAU OF LAND MANAGEMENT

Sundry Notices and Reports on Wells

1. Type of Well
GAS

2. Name of Operator
Meridian Oil Inc.

3. Address & Phone No. of Operator
PO Box 4289, Farmington, NM 87499 (505) 326-9700

4. Location of Well, Footage, Sec., T, R, M
1650' FNL, 990' FNL Sec. 12, T-25-N, R-8-W, NMPM

5. Lease Number
SF-080375A

6. If Indian, All. or
Tribe Name

7. Unit Agreement Name

8. Well Name & Number
Sheets A #4

9. API Well No.

10. Field and Pool
Ballard Pic. Cliffs

11. County and State
San Juan Co, NM

12. CHECK APPROPRIATE BOX TO INDICATE NATURE OF NOTICE, REPORT, OTHER DATA

Type of Submission	Type of Action
<input checked="" type="checkbox"/> Notice of Intent	<input checked="" type="checkbox"/> Abandonment
<input type="checkbox"/> Subsequent Report	<input type="checkbox"/> Recompletion
<input type="checkbox"/> Final Abandonment	<input type="checkbox"/> Plugging Back
	<input type="checkbox"/> Casing Repair
	<input type="checkbox"/> Altering Casing
	<input type="checkbox"/> Other -
	<input type="checkbox"/> Change of Plans
	<input type="checkbox"/> New Construction
	<input type="checkbox"/> Non-Routine Fracturing
	<input type="checkbox"/> Water Shut off
	<input type="checkbox"/> Conversion to Injection

13. Describe Proposed or Completed Operations

It is intended to plug and abandon the subject well per the attached procedure.

RECEIVED
MAY 13 1992
OIL CON. DIV.
DIST. 3

RECEIVED
BLM
MAY -7 AM 10:06
OIL CON. DIV.
DIST. 3

14. I hereby certify that the foregoing is true and correct.

Signed Regan Bradfield (DB) Title Regulatory Affairs Date 5-6-92

(This space for Federal or State Office use)

APPROVED BY _____ Title _____

CONDITION OF APPROVAL, if any:

APPROVED

Date
MAY 12 1992

AREA MANAGER

Sheets A #4
P&A Procedure

Retainers:

- * - 5 1/2" Cement Retainer, as needed.

Cement Requirements:

- * - 254 sx Class "B" with 2% CaCl₂ as required (15.6 ppg, 1.18 ft³/sk, 5.20 gal/sk).

PROCEDURE:

Prior to move on test rig anchors and repair if necessary. Construct reserve pit.

Notify Farmington BLM (326-6201) 24 hours prior to commencing operations.

Comply with all MOI, federal and state regulations.

1. MOL& RU. If necessary kill well with water (well has 0 psi on tubing and casing). ND wellhead and NU BOP. Test BOP.
2. TOH with 1 1/4" tubing. Visual inspect tubing for defects and replace bad joints. TIH open-ended with 1 1/4" tubing to PBTD at 3000'. Clear tubing with fresh water (one tubing volume minimum).
3. Pump 5 bbls water ahead and spot 62 sx Class "B" cement with 2% CaCl₂ on bottom down tubing (73 ft³ for 425' plug inside casing with 100% excess to 100' above top perforation and 50% excess to 50' above Fruitland top). TOH with tubing. Wait on cement a minimum of two hours. TIH to tag top of first plug to verify depth. Close pipe rams and pressure test casing to minimum of 500 psi.
4. Spot 10 bbls of 9.0 ppg / 50 vis mud on bottom. TOH to 2390'. Pump 5 bbls water ahead and spot 55 sx of Class "B" cement at 2390' down tubing (65 ft³ for 322' plug inside casing with 50% excess to 50' above and below Ojo Alamo).
5. TOH to 1900'. Spot 30 bbls of 9.0 ppg / 50 vis mud. TOH with tubing.
6. Pressure test casing below blind rams to 500 psi minimum. RU wireline. Perforate two squeeze holes at 1060' and RD. Cement as follows:
 - A. If pressure held, TIH with workstring to 1010'. Open bradenhead and close pipe rams. Establish rate, pump 5 bbls water ahead and cement down tubing with 36 sx of Class "B" cement. Close bradenhead and open pipe rams. Spot 11 sx Class "B" with 2% CaCl₂ in casing. (47 sx, 55 ft³ total for 100' inside/outside plug with 100% excess in annulus and 50% excess in casing). TOH with tubing. Wait on cement a minimum of two hours. TIH to tag top of plug to verify depth. Spot 30 bbls of 9.0 ppg / 50 vis mud on top of plug and TOH.
 - B. If pressure did not hold, TIH with 5 1/2" casing scraper on 2 3/8" tubing to 1100', TOH. TIH with 5 1/2" cement retainer on 2 3/8" tubing and set retainer at 1010'. Establish rate into squeeze holes, pump 5 bbls water ahead and cement with 36 sx of Class "B" cement (6 sx, 7.1 ft³ below retainer, plug requirements same as in A.). Displace cement to top of retainer. Pull out of retainer and spot 11 sx of cement (97') on top of retainer. TOH to 850' and circulate hole with 30 bbls of 9.0 ppg / 50 vis mud. TOH and lay down workstring.
7. RU wireline. Perforate two squeeze holes at 190' and RD.
8. Rig up on 5 1/2" casing to cement. Establish rate into squeeze holes. Pump 5 bbls water ahead and cement with +/- 90 sx of Class "B" cement to circulate bradenhead (190' surface plug inside and outside). Circulate until good cement returns thru bradenhead.
9. Cut off wellhead and install dry hole marker.
10. Release rig and move off.

Sheets A #4
 Ballard Pictured Cliffs
 SW/NW/4 Sec.12, T25N, R08W
 Wellbore Schematic

