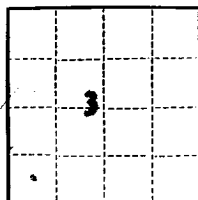


(SUBMIT IN TRIPLICATE)

UNITED STATES
DEPARTMENT OF THE INTERIOR
GEOLOGICAL SURVEY

Land Office **Santa Fe**
Lease No. **USA #078156**
Unit **NM 0116706**



RECEIVED

NOV 27 1962

SUNDRY NOTICES AND REPORTS ON WELLS

NOTICE OF INTENTION TO DRILL	XXX	SUBSEQUENT REPORT OF WATER SHUT-OFF	
NOTICE OF INTENTION TO CHANGE PLANS		SUBSEQUENT REPORT OF SHOOTING OR ACIDIZING	
NOTICE OF INTENTION TO TEST WATER SHUT-OFF		SUBSEQUENT REPORT OF ALTERING CASING	
NOTICE OF INTENTION TO RE-DRILL OR REPAIR WELL		SUBSEQUENT REPORT OF RE-DRILLING OR REPAIR	
NOTICE OF INTENTION TO SHOOT OR ACIDIZE		SUBSEQUENT REPORT OF ABANDONMENT	
NOTICE OF INTENTION TO PULL OR ALTER CASING		SUPPLEMENTARY WELL HISTORY	
NOTICE OF INTENTION TO ABANDON WELL			

(INDICATE ABOVE BY CHECK MARK NATURE OF REPORT, NOTICE, OR OTHER DATA)

November 23, 19 62

SALGE "C"
Well No. **1** is located **660** ft. from **[N] [S]** line and **660** ft. from **[E] [W]** line of sec. **3**
SW SW Section 3 **25N** **13W** **NMPM**
(1/4 Sec. and Sec. No.) (Twp.) (Range) (Meridian)
Bisti-Gallup **San Juan** **New Mexico**
(Field) (County or Subdivision) (State or Territory)

The elevation of the derrick floor above sea level is **6400** ft. **KB Est.**

DETAILS OF WORK

(State names of and expected depths to objective sands; show sizes, weights, and lengths of proposed casings; indicate mudding jobs, cementing points, and all other important proposed work)

To drill and test subject well to the Gallup formation. Surface Casing: 8-5/8" OD 24# J-55 casing to be set at approx. 250' KB and cemented to surface. Production Casing: 5-1/2" OD 14# J-55 casing to be set thru the oil producing zone of the Gallup. Use centralizers and scratchers thru the Gallup and cement with 150 sax 50-50 Pozmix "S" & 2% Gel. Use top and bottom plugs. Coring: 50' Gallup. Testing: DST's will be taken if content of sands is questionable. Logging: Combination Induction-ES log from TD to surface casing with Detail from TD to 4700' and 1600' to 1300'. Sonic-Gamma Ray-Caliper from TD to 4700' and 1600' to 1300'. Run Cement Bond-Gamma Ray Log in conjunction with perforating. Drilling Time: Geologist from 250' to TD. Drift Surveys: At 50' intervals to 250'; thereafter, at 250' intervals. Depth Measurements: SLM of drill pipe at approximately 150' above the Mancos and at TD. Samples: Collect 10' samples from surface to TD, or, as directed by wellsite geologist.

I understand that this plan of work must receive approval in writing by the Geological Survey before operations may be commenced.

Company **The British-American Oil Producing Company**

Address **P. O. Box 180**

Denver, Colorado

By **Thomas M. Hogan**

Title **District Superintendent**

NEW MEXICO OIL CONSERVATION COMMISSION

Well Location and Acreage Dedication Plat

SECTION A.

Date **November 22, 1962**

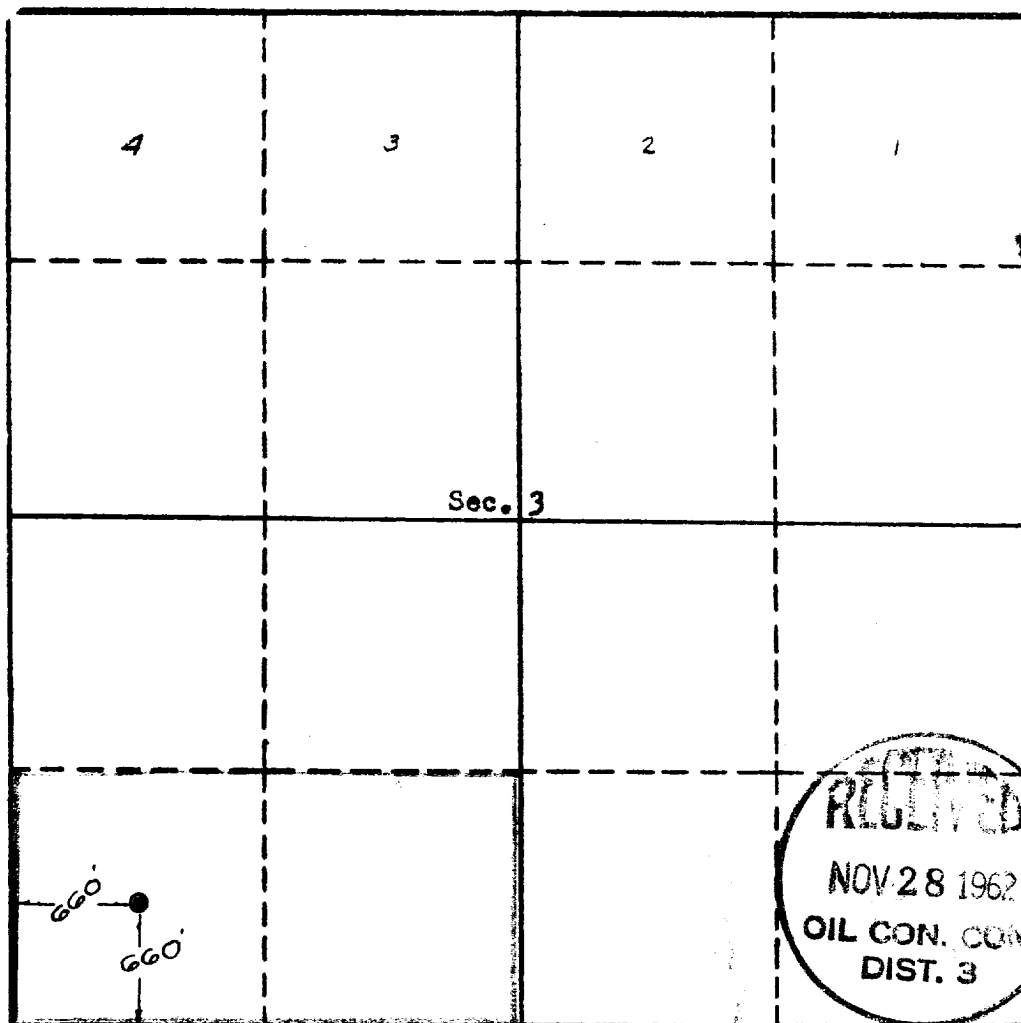
Operator **British American Oil Producing Company** Lease **Salge**
 Well No. **C #1** Unit Letter **M** Section **3** Township **25 North** Range **13 West** NMPM
 Located **660** Feet From **South** Line, **660** Feet From **West** Line
 County **San Juan** G. L. Elevation **6730 6370** Dedicated Acreage **80** Acres
 Name of Producing Formation **Lower Gallup** Pool **Bisti Gallup**

1. Is the Operator the only owner* in the dedicated acreage outlined on the plat below? Yes **XX** No
2. If the answer to question One is "No," have the interests of all the owners been consolidated by community agreement or otherwise? Yes _____ No _____. If answer is "Yes," Type of Consolidation _____
3. If the answer to question Two is "No," list all the owners and their respective interests below:

OWNER

LAND DESCRIPTION

SECTION B.



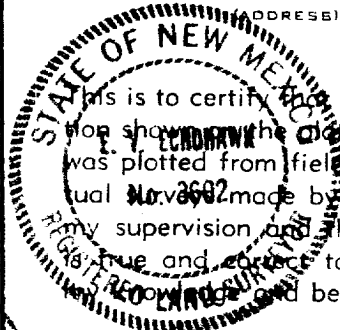
This is to certify that the information in Section A above is true and complete to the best of my knowledge and belief.

The British-American Oil Prod. Co.

(OPERATOR)
 Original Signed By:
Nas R. Stone

Nas R. Stone (REPRESENTATIVE)

P.O. Drawer 330, Farmington, N.M.
 (ADDRESS)



This is to certify that the well location shown on the plat in Section B was plotted from field notes of actual **Nov. 26, 1962** made by me or under my supervision and that the same are true and correct to the best of my knowledge and belief.

Date Surveyed **Nov. 22, 1962**

FARMINGTON, NEW MEXICO

Ernest H. Cabshaw
 REGISTERED ENGINEER OR
 LAND SURVEYOR

Certificate No. **3602**

320 660 990 1320 1660 1990 2320 2660 2990 3320 3660 3990 4320 4660 4990 5320 5660 5990 6320 6660 6990 7320 7660 7990 8320 8660 8990 9320 9660 9990 10320 10660 10990 11320 11660 11990 12320 12660 12990 13320 13660 13990 14320 14660 14990 15320 15660 15990 16320 16660 16990 17320 17660 17990 18320 18660 18990 19320 19660 19990 20320 20660 20990 21320 21660 21990 22320 22660 22990 23320 23660 23990 24320 24660 24990 25320 25660 25990 26320 26660 26990 27320 27660 27990 28320 28660 28990 29320 29660 29990 30320 30660 30990 31320 31660 31990 32320 32660 32990 33320 33660 33990 34320 34660 34990 35320 35660 35990 36320 36660 36990 37320 37660 37990 38320 38660 38990 39320 39660 39990 40320 40660 40990 41320 41660 41990 42320 42660 42990 43320 43660 43990 44320 44660 44990 45320 45660 45990 46320 46660 46990 47320 47660 47990 48320 48660 48990 49320 49660 49990 50320 50660 50990 51320 51660 51990 52320 52660 52990 53320 53660 53990 54320 54660 54990 55320 55660 55990 56320 56660 56990 57320 57660 57990 58320 58660 58990 59320 59660 59990 60320 60660 60990 61320 61660 61990 62320 62660 62990 63320 63660 63990 64320 64660 64990 65320 65660 65990 66320 66660 66990 67320 67660 67990 68320 68660 68990 69320 69660 69990 70320 70660 70990 71320 71660 71990 72320 72660 72990 73320 73660 73990 74320 74660 74990 75320 75660 75990 76320 76660 76990 77320 77660 77990 78320 78660 78990 79320 79660 79990 80320 80660 80990 81320 81660 81990 82320 82660 82990 83320 83660 83990 84320 84660 84990 85320 85660 85990 86320 86660 86990 87320 87660 87990 88320 88660 88990 89320 89660 89990 90320 90660 90990 91320 91660 91990 92320 92660 92990 93320 93660 93990 94320 94660 94990 95320 95660 95990 96320 96660 96990 97320 97660 97990 98320 98660 98990 99320 99660 99990 100320 100660 100990 101320 101660 101990 102320 102660 102990 103320 103660 103990 104320 104660 104990 105320 105660 105990 106320 106660 106990 107320 107660 107990 108320 108660 108990 109320 109660 109990 110320 110660 110990 111320 111660 111990 112320 112660 112990 113320 113660 113990 114320 114660 114990 115320 115660 115990 116320 116660 116990 117320 117660 117990 118320 118660 118990 119320 119660 119990 120320 120660 120990 121320 121660 121990 122320 122660 122990 123320 123660 123990 124320 124660 124990 125320 125660 125990 126320 126660 126990 127320 127660 127990 128320 128660 128990 129320 129660 129990 130320 130660 130990 131320 131660 131990 132320 132660 132990 133320 133660 133990 134320 134660 134990 135320 135660 135990 136320 136660 136990 137320 137660 137990 138320 138660 138990 139320 139660 139990 140320 140660 140990 141320 141660 141990 142320 142660 142990 143320 143660 143990 144320 144660 144990 145320 145660 145990 146320 146660 146990 147320 147660 147990 148320 148660 148990 149320 149660 149990 150320 150660 150990 151320 151660 151990 152320 152660 152990 153320 153660 153990 154320 154660 154990 155320 155660 155990 156320 156660 156990 157320 157660 157990 158320 158660 158990 159320 159660 159990 160320 160660 160990 161320 161660 161990 162320 162660 162990 163320 163660 163990 164320 164660 164990 165320 165660 165990 166320 166660 166990 167320 167660 167990 168320 168660 168990 169320 169660 169990 170320 170660 170990 171320 171660 171990 172320 172660 172990 173320 173660 173990 174320 174660 174990 175320 175660 175990 176320 176660 176990 177320 177660 177990 178320 178660 178990 179320 179660 179990 180320 180660 180990 181320 181660 181990 182320 182660 182990 183320 183660 183990 184320 184660 184990 185320 185660 185990 186320 186660 186990 187320 187660 187990 188320 188660 188990 189320 189660 189990 190320 190660 190990 191320 191660 191990 192320 192660 192990 193320 193660 193990 194320 194660 194990 195320 195660 195990 196320 196660 196990 197320 197660 197990 198320 198660 198990 199320 199660 199990 200320 200660 200990 201320 201660 201990 202320 202660 202990 203320 203660 203990 204320 204660 204990 205320 205660 205990 206320 206660 206990 207320 207660 207990 208320 208660 208990 209320 209660 209990 210320 210660 210990 211320 211660 211990 212320 212660 212990 213320 213660 213990 214320 214660 214990 215320 215660 215990 216320 216660 216990 217320 217660 217990 218320 218660 218990 219320 219660 219990 220320 220660 220990 221320 221660 221990 222320 222660 222990 223320 223660 223990 224320 224660 224990 225320 225660 225990 226320 226660 226990 227320 227660 227990 228320 228660 228990 229320 229660 229990 230320 230660 230990 231320 231660 231990 232320 232660 232990 233320 233660 233990 234320 234660 234990 235320 235660 235990 236320 236660 236990 237320 237660 237990 238320 238660 238990 239320 239660 239990 240320 240660 240990 241320 241660 241990 242320 242660 242990 243320 243660 243990 244320 244660 244990 245320 245660 245990 246320 246660 246990 247320 247660 247990 248320 248660 248990 249320 249660 249990 250320 250660 250990 251320 251660 251990 252320 252660 252990 253320 253660 253990 254320 254660 254990 255320 255660 255990 256320 256660 256990 257320 257660 257990 258320 258660 258990 259320 259660 259990 260320 260660 260990 261320 261660 261990 262320 262660 262990 263320 263660 263990 264320 264660 264990 265320 265660 265990 266320 266660 266990 267320 267660 267990 268320 268660 268990 269320 269660 269990 270320 270660 270990 271320 271660 271990 272320 272660 272990 273320 273660 273990 274320 274660 274990 275320 275660 275990 276320 276660 276990 277320 277660 277990 278320 278660 278990 279320 279660 279990 280320 280660 280990 281320 281660 281990 282320 282660 282990 283320 283660 283990 284320 284660 284990 285320 285660 285990 286320 286660 286990 287320 287660 287990 288320 288660 288990 289320 289660 289990 290320 290660 290990 291320 291660 291990 292320 292660 292990 293320 293660 293990 294320 294660 294990 295320 295660 295990 296320 296660 296990 297320 297660 297990 298320 298660 298990 299320 299660 299990 300320 300660 300990 301320 301660 301990 302320 302660 302990 303320 303660 303990 304320 304660 304990 305320 305660 305990 306320 306660 306990 307320 307660 307990 308320 308660 308990 309320 309660 309990 310320 310660 310990 311320 311660 311990 312320 312660 312990 313320 313660 313990 314320 314660 314990 315320 315660 315990 316320 316660 316990 317320 317660 317990 318320 318660 318990 319320 319660 319990 320320 320660 320990 321320 321660 321990 322320 322660 322990 323320 323660 323990 324320 324660 324990 325320 325660 325990 326320 326660 326990 327320 327660 327990 328320 328660 328990 329320 329660 329990 330320 330660 330990 331320 331660 331990 332320 332660 332990 333320 333660 333990 334320 334660 334990 335320 335660 335990 336320 336660 336990 337320 337660 337990 338320 338660 338990 339320 339660 339990 340320 340660 340990 341320 341660 341990 342320 342660 342990 343320 343660 343990 344320 344660 344990 345320 345660 345990 346320 346660 346990 347320 347660 347990 348320 348660 348990 349320 349660 349990 350320 350660 350990 351320 351660 351990 352320 352660 352990 353320 353660 353990 354320 354660 354990 355320 355660 355990 356320 356660 356990 357320 357660 357990 358320 358660 358990 359320 359660 359990 360320 360660 360990 361320 361660 361990 362320 362660 362990 363320 363660 363990 364320 364660 364990 365320 365660 365990 366320 366660 366990 367320 367660 367990 368320 368660 368990 369320 369660 369990 370320 370660 370990 371320 371660 371990 372320 372660 372990 373320 373660 373990 374320 374660 374990 375320 375660 375990 376320 376660 376990 377320 377660 377990 378320 378660 378990 379320 379660 379990 380320 380660 380990 381320 381660 381990 382320 382660 382990 383320 383660 383990 384320 384660 384990 385320 385660 385990 386320 386660 386990 387320 387660 387990 388320 388660 388990 389320 389660 389990 390320 390660 390990 391320 391660 391990 392320 392660 392990 393320 393660 393990 394320 394660 394990 395320 395660 395990 396320 396660 396990 397320 397660 397990 398320 398660 398990 399320 399660 399990 400320 400660 400990 401320 401660 401990 402320 402660 402990 403320 403660 403990 404320 404660 404990 405320 405660 405990 406320 406660 406990 407320 407660 407990 408320 408660 408990 409320 409660 409990 410320 410660 410990 411320 411660 411990 412320 412660 412990 413320 413660 413990 414320 414660 414990 415320 415660 415990 416320 416660 416990 417320 417660 417990 418320 418660 418990 419320 419660 419990 420320 420660 420990 421320 421660 421990 422320 422660 422990 423320 423660 423990 424320 424660 424990 425320 425660 425990 426320 426660 426990 427320 427660 427990 428320 428660 428990 429320 429660 429990 430320 430660 430990 431320 431660 431990 432320 432660 432990 433320 433660 433990 434320 434660 434990 435320 435660 435990 436320 436660 436990 437320 437660 437990 438320 438660 438990 439320 439660 439990 440320 440660 440990 441320 441660 441990 442320 442660 442990 443320 443660 443990 444320 444660 444990 445320 445660 445990 446320 446660 446990 447320 447660 447990 448320 448660 448990 449320 449660 449990 450320 450660 450990 451320 451660 451990 452320 452660 452990 453320 453660 453990 454320 454660 454990 455320 455660 455990 456320 456660 456990 457320 457660 457990 458320 458660 458990 459320 459660 459990 460320 460660 460990 461320 461660 461990 462320 462660 462990 463320 463660 463990 464320 464660 464990 465320 465660 465990 466320 466660 466990 467320 467660 467990 468320 468660 468990 469320 469660 469990 470320 470660 470990 471320 471660 471990 472320 472660 472990 473320 473660 473990 474320 474660 474990 475320 475660 475990 476320 476660 476990 477320 477660 477990 478320 478660 478990 479320 479660 479990 480320 480660 480990 481320 481660 481990 482320 482660 482990 483320 483660 483990 484320 484660 484990 485320 485660 485990 486320 486660 486990 487320 487660 487990 488320 488660 488990 489320 489660 489990 490320 490660 490990 491320 491660 491990 492320 492660 492990 493320 493660 493990 494320 494660 494990 495320 495660 495990 496320 496660 496990 497320 497660 497990 498320 498660 498990 499320 499660 499990 500320 500660 500990 501320 501660 501990 502320 502660 502990 503320 503660 503990 504320 504660 504990 505320 505660 505990 506320 506660 506990 507320 507660 507990 508320 508660 508990 509320 509660 509990 510320 510660 510990 511320 511660 511990 512320 512660 512990 513320 513660 513990 514320 514660 514990 515320 515660 515990 516320 516660 516990 517320 517660 517990 518320 518660 518990 519320 519660 519990 520320 520660 520990 521320 521660 521990 522320 522660 522990 523320 523660 523990 524320 524660 524990 525320 525660 525990 526320 526660 526990 527320 527660 527990 528320 528660 528990 529320 529660 529990 530320 530660 530990 531320 531660 531990 532320 532660 532990 533320 533660 533990 534320 534660 534990 535320 535660 535990 536320 536

