

UNITED STATES
DEPARTMENT OF THE INTERIOR
GEOLOGICAL SURVEY

30-045-21550

APPLICATION FOR PERMIT TO DRILL, DEEPEN, OR PLUG BACK

1a. TYPE OF WORK

DRILL ☒DEEPEN ☐PLUG BACK ☐

b. TYPE OF WELL

OIL
WELL ☐GAS
WELL ☒

OTHER

SINGLE
ZONE ☒MULTIPLE
ZONE ☐

2. NAME OF OPERATOR

Tesoro Petroleum Corporation

3. ADDRESS OF OPERATOR

1776 Lincoln, Suite 1012, Denver, Colorado 80203

4. LOCATION OF WELL (Report location clearly and in accordance with any State requirements.*)

At surface
1050' FSL & 895' FWL (SW/4; SW/4) Sec. 22, T25N, R17WAt proposed prod. zone
Same as above

14. DISTANCE IN MILES AND DIRECTION FROM NEAREST TOWN OR POST OFFICE*

12 miles east of Sanostee, New Mexico

15. DISTANCE FROM PROPOSED*

LOCATION TO NEAREST
PROPERTY OR LEASE LINE, FT.
(Also to nearest drlg. unit line, if any) 1050

16. NO. OF ACRES IN LEASE

2560

18. DISTANCE FROM PROPOSED LOCATION*

TO NEAREST WELL, DRILLING, COMPLETED,
OR APPLIED FOR, ON THIS LEASE, FT.

None

19. PROPOSED DEPTH

4300'

17. NO. OF ACRES ASSIGNED
TO THIS WELL

320

20. ROTARY OR CABLE TOOLS

Rotary

21. ELEVATIONS (Show whether DF, RT, GR, etc.)

22. APPROX. DATE WORK WILL START*

Sept. 20, 1974

23.

PROPOSED CASING AND CEMENTING PROGRAM

SIZE OF HOLE	SIZE OF CASING	WEIGHT PER FOOT	SETTING DEPTH	QUANTITY OF CEMENT
12 1/4"	8 5/8"	24#	160'	100 sx. w/2% CaCl
7 7/8"	4 1/2"	9.5#	4300'	200 sx.

Tesoro proposes to drill and complete the above captioned well according to the following procedure:

1. Drill a 12 1/4" hole to 160'±, run and set 8 5/8" surface casing at this depth. Cement casing with 100 sx. WOC 8 hours. Test casing to 1000 psi for 30 minutes.
2. Drill a 7 7/8" hole thru the 8 5/8" casing to 4300'.
3. Run DST's on zones of interest during drilling operations; log well at T.D. If well evaluation techniques indicate a commercial producer;
4. Run 4 1/2" casing and set at T.D. Cement casing with 200 sx. WOC 12 hours. Test 4 1/2" casing to 1500 psi for 30 minutes.
5. Perforate porous zones indicated on logs; install production equipment, test, and place well on production.

IN ABOVE SPACE DESCRIBE PROPOSED PROGRAM: If proposal is to deepen or plug back, give data on present productive zone and proposed new productive zone. If proposal is to drill or deepen directionally, give pertinent data on subsurface locations and measured and true vertical depths. Give blowout preventer program, if any.

24.

SIGNED

L. C. Marguaret

TITLE District Engineer

DATE 9/03/74

(This space for Federal or State office use)

PERMIT NO.

APPROVAL DATE

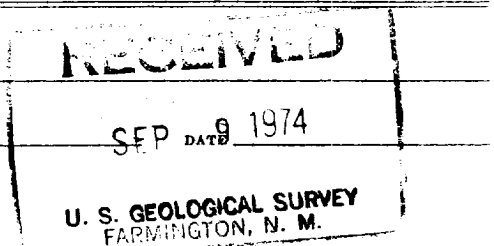
APPROVED BY

TITLE

CONDITIONS OF APPROVAL, IF ANY:

NSC for oil well

*See Instructions On Reverse Side



NEW MEXICO OIL CONSERVATION COMMISSION
WELL LOCATION AND ACREAGE DEDICATION PLAT

Form C-102
Supersedes C-128
Effective 1-1-65

All distances must be from the outer boundaries of the Section.

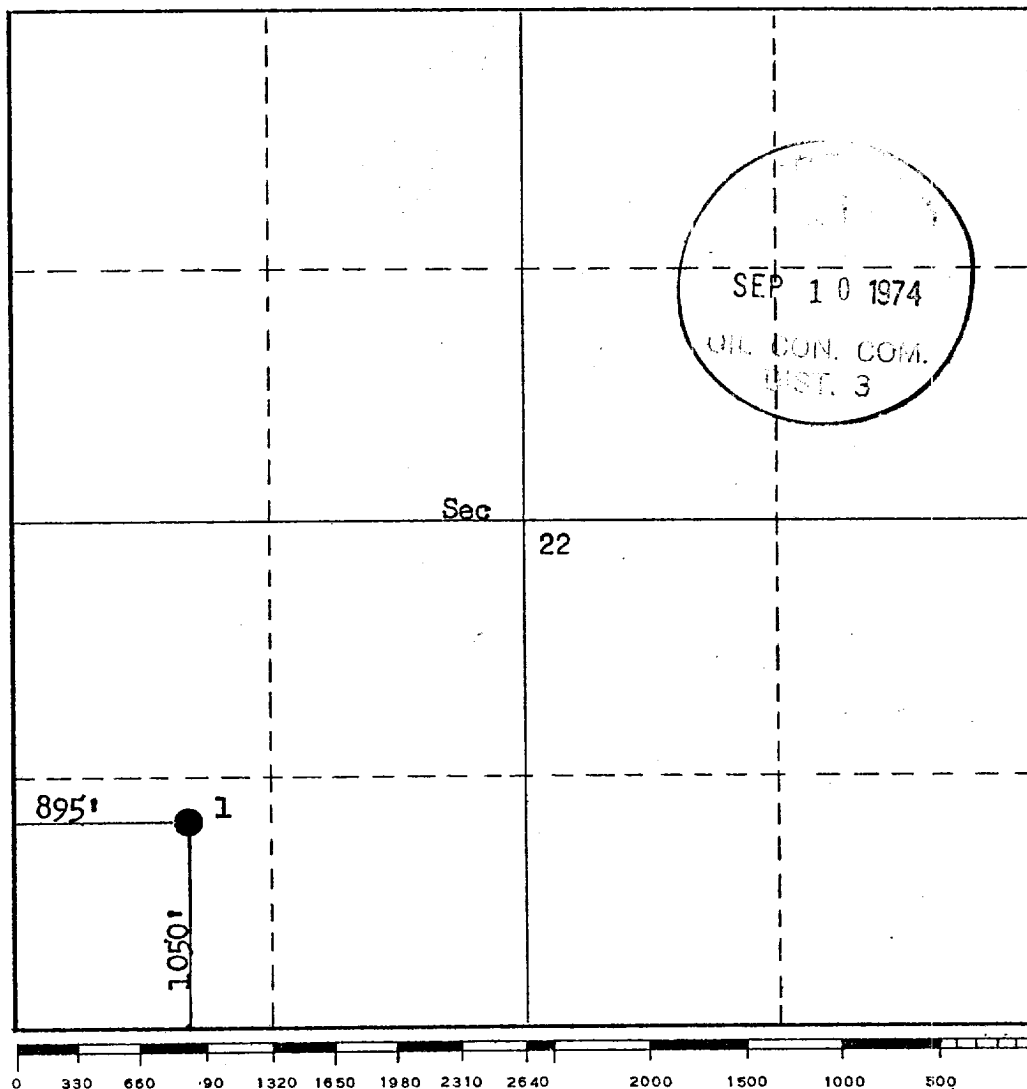
Operator Tesoro Petroleum Corporation			Lease Tocito Navajo		Well No. 1
Unit Letter M	Section 22	Township 25N	Range 17W	County San Juan	
Actual Footage Location of Well: 1050 feet from the South line and 895 feet from the West line					
Ground Level Elev. 5451	Producing Formation Dakota Test		Pool Wildcat	Dedicated Acreage: 320 Acres	

1. Outline the acreage dedicated to the subject well by colored pencil or hachure marks on the plat below.
2. If more than one lease is dedicated to the well, outline each and identify the ownership thereof (both as to working interest and royalty).
3. If more than one lease of different ownership is dedicated to the well, have the interests of all owners been consolidated by communitization, unitization, force-pooling, etc?

☐ Yes ☐ No If answer is "yes," type of consolidation _____

If answer is "no," list the owners and tract descriptions which have actually been consolidated. (Use reverse side of this form if necessary.) _____

No allowable will be assigned to the well until all interests have been consolidated (by communitization, unitization, forced-pooling, or otherwise) or until a non-standard unit, eliminating such interests, has been approved by the Commission.



CERTIFICATION

I hereby certify that the information contained herein is true and complete to the best of my knowledge and belief.

L. Charles Marquart
Name

L. Charles Marquart

Position

District Engineer

Company

Tesoro Petroleum Corp.

Date

9/3/74

I hereby certify that the well location shown on this plat was plotted from field notes of actual surveys made by me or under my supervision, and that the same is true and correct to the best of my knowledge and belief.

Date Surveyed

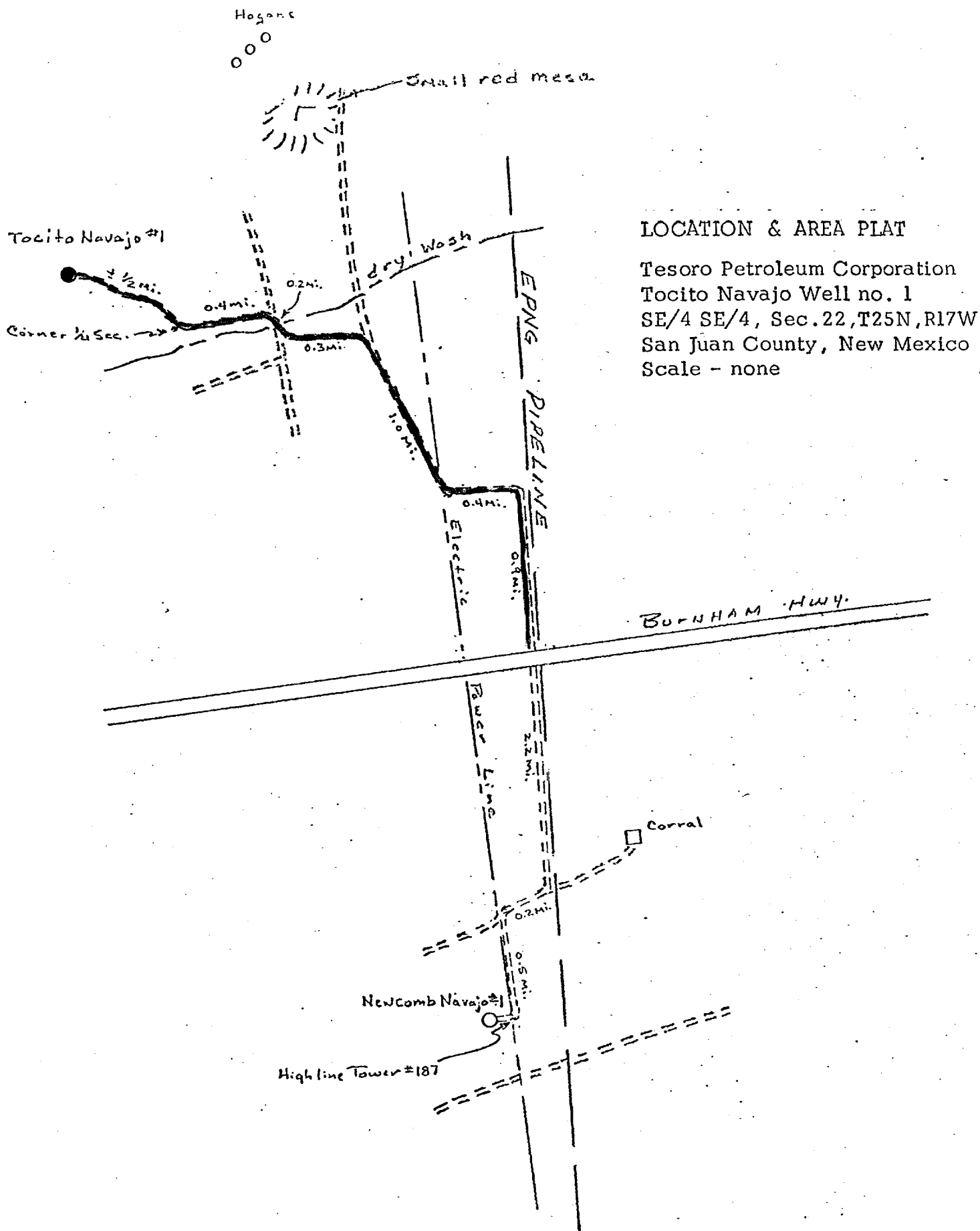
August 26, 1974

Registered Professional Engineer and/or Land Surveyor

Fred B. Kerr, Jr.
Fred B. Kerr, Jr.

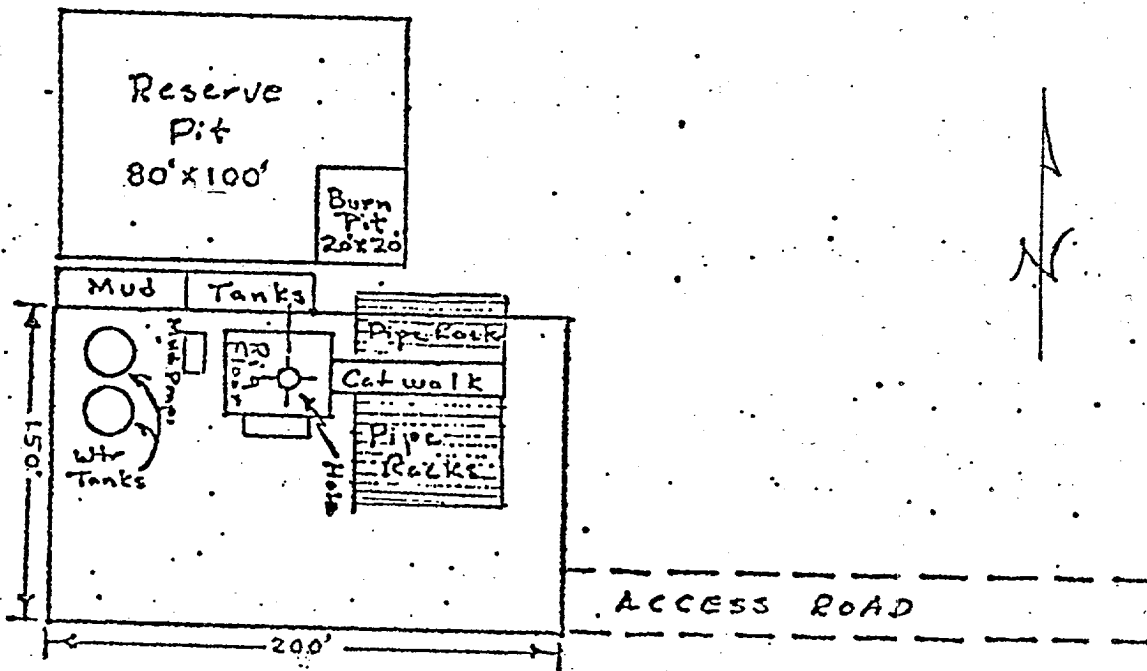
Certificate No.

3950



LOCATION & AREA PLAT

Tesoro Petroleum Corporation
Tocito Navajo Well no. 1
SE/4 SE/4, Sec. 22, T25N, R17W
San Juan County, New Mexico
Scale - none



LOCATION PLAT

Tesoro Petroleum Corporation
 Tocito Navajo Well # 1
 SE/4 SE/4, Sec. 22, T25N, R17W
 San Juan County, New Mexico
 Scale - None