

UNITED STATES
DEPARTMENT OF THE INTERIOR
BUREAU OF LAND MANAGEMENT

APPLICATION FOR PERMIT TO DRILL, DEEPEN, OR PLUG BACK

1a. TYPE OF WORK
DRILL ☒ DEEPEN ☐ PLUG BACK ☐
b. TYPE OF WELL
OIL WELL ☐ GAS WELL ☒ OTHER ☐
SINGLE ZONE ☒ MULTIPLE ZONE ☐

2. NAME OF OPERATOR
El Paso Natural Gas Company

3. ADDRESS OF OPERATOR
PO Box 4289, Farmington, NM 87499

4. LOCATION OF WELL (Report location clearly and in accordance with any State requirements.)
At surface 850'S, 850'W
At proposed prod. zone

14. DISTANCE IN MILES AND DIRECTION FROM NEAREST TOWN OR POST OFFICE
24 miles Southeast of Bloomfield, NM

10. DISTANCE FROM PROPOSED*
LOCATION TO NEAREST
PROPERTY OR LEASE LINE, FT.
(Also to nearest drlg. unit line, if any) 850'

16. NO. OF ACRES IN LEASE
Unit

17. NO. OF ACRES ASSIGNED
TO THIS WELL W 320.00

18. DISTANCE FROM PROPOSED*
TO NEAREST WELL, DRILLING, COMPLETED,
OR APPLIED FOR, ON THIS LEASE, FT. 6000

19. PROPOSED DEPTH
6635'

20. ROTARY OR CABLE TOOLS
Rotary

21. ELEVATIONS (Show whether DF, RT, GR, etc.)
6624' GL

DRILLING OPERATIONS AUTHORIZED ARE
SUBJECT TO COMPLIANCE WITH ATTACHED
"GENERAL REQUIREMENTS"

22. APPROX. DATE WORK WILL START*

23. PROPOSED CASING AND CEMENTING PROGRAM

This action is subject to administrative
appeal pursuant to 30 CFR 290.
QUANTITY OF CEMENT

SIZE OF HOLE	SIZE OF CASING	WEIGHT PER FOOT	SETTING DEPTH	
12 1/4"	8 5/8"	24.0#	200'	165 cu.ft.circulated
7 7/8"	4 1/2"	10.5#&11.6#	6635'	1195 cu.ft.circulated

1st stage - 369 cu.ft. to cover Gallup
2nd stage - 559 cu.ft. to cover Mesa Verde
3rd stage - 502 cu.ft. to cover Ojo Alamo

Selectively perforate and sand water fracture the Dakota formation.

A 3000 psi WP and 6000 psi test double gate preventer equipped with
blind and pipe rams will be used for blow out prevention on this well.

This gas is dedicated.

The W/2 of Section 15 is dedicated to this well.

RECEIVED

NOV 26 1984

OIL CON. DIV.
DIST. 2

IN ABOVE SPACE DESCRIBE PROPOSED PROGRAM: If proposal is to deepen or plug back, give data on present productive zone and proposed new productive zone. If proposal is to drill or deepen directionally, give pertinent data on subsurface locations and measured and true vertical depths. Give blowout preventer program, if any.

24. SIGNED Robert Bradford TITLE Drilling Clerk DATE 10-15-84
(This space for Federal or State office use)

PERMIT NO. APPROVAL DATE

APPROVED BY TITLE
CONDITIONS OF APPROVAL, IF ANY:

APPROVED
AS AMENDED

OCT 2 1984

DATE
J. Stan McKee
M. MILLENBACH
AREA MANAGER

NMOCC

*See Instructions On Reverse Side

All distances must be from the outer boundaries of the Section.

Operator EL PASO NATURAL GAS COMPANY		Lease HUERFANO UNIT <i>11M C 3015</i> <i>(NM 03016)</i>		Well No. 56
Unit Letter M	Section 15	Township 25N	Range 9W	County San Juan
Actual Footage Location of Well: 850 feet from the South line and 850 feet from the West line				
Ground Level Elev: 6624	Producing Formation Dakota	Pool Basin Dakota	Dedicated Acreage: 320 Acres	

1. Outline the acreage dedicated to the subject well by colored pencil or hatchure marks on the plat below.
2. If more than one lease is dedicated to the well, outline each and identify the ownership thereof (both as to working interest and royalty).
3. If more than one lease of different ownership is dedicated to the well, have the interests of all owners been consolidated by communitization, unitization, force-pooling, etc?

☒ Yes ☐ No If answer is "yes," type of consolidation Unitization

If answer is "no," list the owners and tract descriptions which have actually been consolidated. (Use reverse side of this form if necessary.)

No allowable will be assigned to the well until all interests have been consolidated (by communitization, unitization, forced-pooling, or otherwise) or until a non-standard unit, eliminating such interests, has been approved by the Commission.

		<p align="center">RECEIVED</p> <p align="center">OCT 19 1984</p> <p align="center">BUREAU OF LAND MANAGEMENT FARMINGTON RESOURCE AREA</p>	
		<p align="center">15</p> <p align="center">RECEIVED</p> <p align="center">NOV 26 1984</p> <p align="center">OIL CON. DIV</p> <p align="center">DIST. 3</p>	
<p align="center">Sec.</p>			

CERTIFICATION

I hereby certify that the information contained herein is true and complete to the best of my knowledge and belief.

Jogger Bradfield

Name

Drilling Clerk

Position

El Paso Natural Gas

Company

October 11, 1984

Date

I hereby certify that the well location shown on this plat was plotted from field notes of actual surveys made by me or under my supervision, and that the same is true and correct to the best of my knowledge and belief.

Date Surveyed

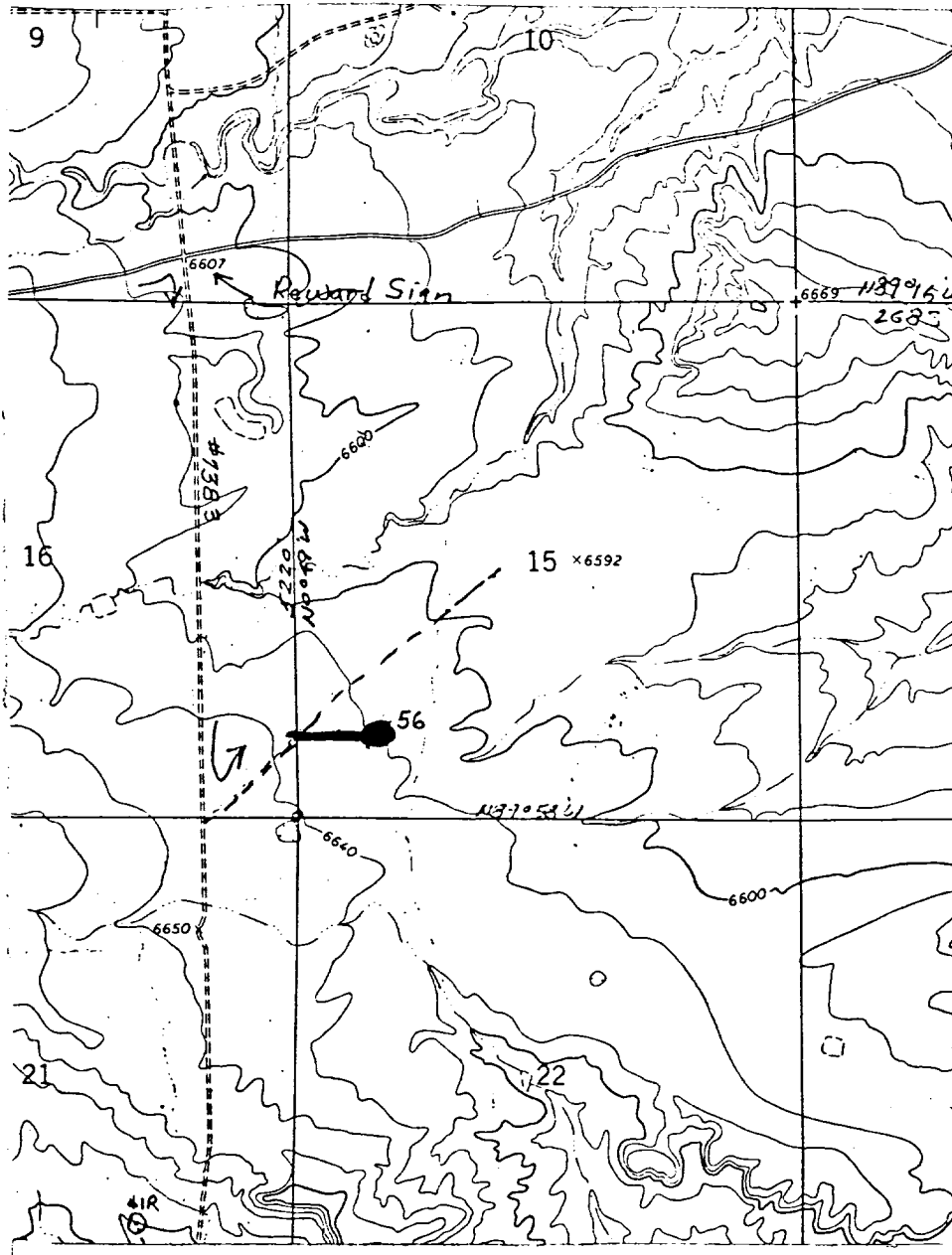
October 9, 1984

Registered Professional Engineer and Land Surveyor.

Fred B. Kerr Jr.
Fred B. Kerr Jr.

Certificate No. 4, 1984

El Paso Natural Gas Company
Huerfano Unit #56
SW Section 15, T-25-N, R-9-W
Basin Dakota



LEGEND OF RIGHT-OF-WAYS

EXISTING ROADS

EXISTING PIPELINES

EXISTING ROAD & PIPELINE

PROPOSED ROADS

PROPOSED PIPELINES

PROPOSED ROAD & PIPELINE

