

UNITED STATES
DEPARTMENT OF THE INTERIOR
BUREAU OF LAND MANAGEMENT

APPLICATION FOR PERMIT TO DRILL, DEEPEN, OR PLUG BACK

1a. TYPE OF WORK

DRILL ☒

DEEPEN ☐

PLUG BACK ☐

b. TYPE OF WELL

OIL
WELL ☐

GAS
WELL ☒

OTHER

SINGLE
ZONE ☒

MULTIPLE
ZONE ☐

2. NAME OF OPERATOR

Hixon Development Company

3. ADDRESS OF OPERATOR

P. O. Box 2810, Farmington, New Mexico 87401

4. LOCATION OF WELL (Report location clearly and in accordance with any State requirements.)*
At surface

At proposed prod. zone
795' FNL and 1230' FEL

Section 8, T25N, R11W, NMPM

14. DISTANCE IN MILES AND DIRECTION FROM NEAREST TOWN OR POST OFFICE*

23 miles from Farmington, NM

15. DISTANCE FROM PROPOSED*

LOCATION TO NEAREST
PROPERTY OR LEASE LINE, FT.
(Also to nearest drlg. unit line, if any)

795'

16. NO. OF ACRES IN LEASE

1280.30

17. NO. OF ACRES ASSIGNED
TO THIS WELL

320

18. DISTANCE FROM PROPOSED LOCATION*
TO NEAREST WELL, DRILLING, COMPLETED,
OR APPLIED FOR, ON THIS LEASE, FT.

315'

19. PROPOSED DEPTH

1400'

20. ROTARY OR CABLE TOOLS

Rotary

21. ELEVATIONS (Show whether DF, RT, GR, etc.)

6318' GLE

22. APPROX. DATE WORK WILL START*

February 20, 1990

23. PROPOSED CASING AND CEMENTING PROGRAM

SIZE OF HOLE	SIZE OF CASING	WEIGHT PER FOOT	SETTING DEPTH
8-3/4"	7"	20#	110'
6-1/4"	4-1/2"	10.5#	1400'

GENERAL REQUIREMENTS
60 sks (1.18 ft³/sk)
cmt to surface
165 sks cmt to surface
(85 sks - 2.06 ft³/sk)
(80 sks - 1.18 ft³/sk)

It is proposed to drill the subject Basin Fruitland Coal Well. It will be evaluated on the basis of open hole logs. Please see attached Onshore Oil and Gas Order No. 1 data.

RECEIVED
MAR 9 1990
OIL CON. DIV.
DIST. 3

IN ABOVE SPACE DESCRIBE PROPOSED PROGRAM: If proposal is to deepen or plug back, give data on present productive zone and proposed new productive zone. If proposal is to drill or deepen directionally, give pertinent data on subsurface locations and measured and true vertical depths. Give blowout preventer program, if any.

24. SIGNED John C. Corbett TITLE Vice President-Exploration DATE January 22, 1990
(This space for Federal or State office use)

PERMIT NO. _____ APPROVAL DATE _____

APPROVED BY _____ TITLE _____
CONDITIONS OF APPROVAL, IF ANY:

ok
C2

NMOCD

MAR 15 1990
AREA MANAGER

*See Instructions On Reverse Side

RECEIVED
JUN 1964
MID. MOD. DIV.
2.100

Submit to Appropriate
District Office
State Lease - 4 copies
Fee Lease - 3 copies

State of New Mexico
Energy, Minerals and Natural Resources Department

Form C-102
Revised 1-1-89

OIL CONSERVATION DIVISION

DISTRICT I
P.O. Box 1980, Hobbs, NM 88240

P.O. Box 2088

Santa Fe, New Mexico 87504-2088

DISTRICT II
P.O. Drawer DD, Artesia, NM 88210

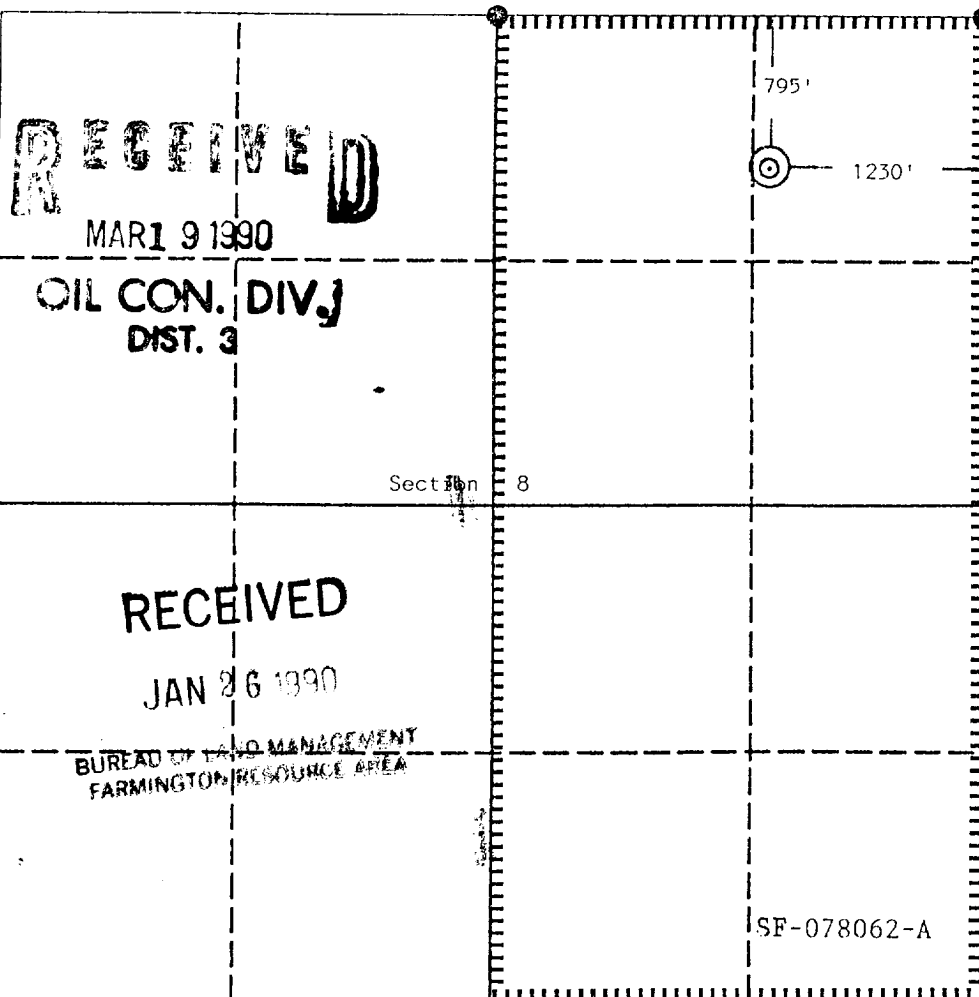
DISTRICT III
1000 Rio Brazos Rd., Aztec, NM 87410

WELL LOCATION AND ACREAGE DEDICATION PLAT

All Distances must be from the outer boundaries of the section

Operator Hixon Development Company			Lease East Bisti Coal 8		Well No. 1
Unit Letter A	Section 8	Township 25 North	Range 11 West	County San Juan	
Actual Footage Location of Well: 795 feet from the North line and 1230 feet from the East line					
Ground level Elev. 6318	Producing Formation Fruitland		Pool Basin Fruitland Coal		Dedicated Acreage: 320 Acres

1. Outline the acreage dedicated to the subject well by colored pencil or hatchure marks on the plat below.
2. If more than one lease is dedicated to the well, outline each and identify the ownership thereof (both as to working interest and royalty).
3. If more than one lease of different ownership is dedicated to the well, have the interest of all owners been consolidated by communitization, unitization, force-pooling, etc.?
☐ Yes ☐ No If answer is "yes" type of consolidation _____
If answer is "no" list the owners and tract descriptions which have actually been consolidated. (Use reverse side of this form if necessary). _____
No allowable will be assigned to the well until all interests have been consolidated (by communitization, unitization, forced-pooling, or otherwise) or until a non-standard unit, eliminating such interest, has been approved by the Division.



OPERATOR CERTIFICATION

I hereby certify that the information contained herein is true and complete to the best of my knowledge and belief.

Signature
John C. Corbett
Printed Name
John C. Corbett
Position
Vice President-Exploration
Company
Hixon Development Company
Date
January 19, 1990

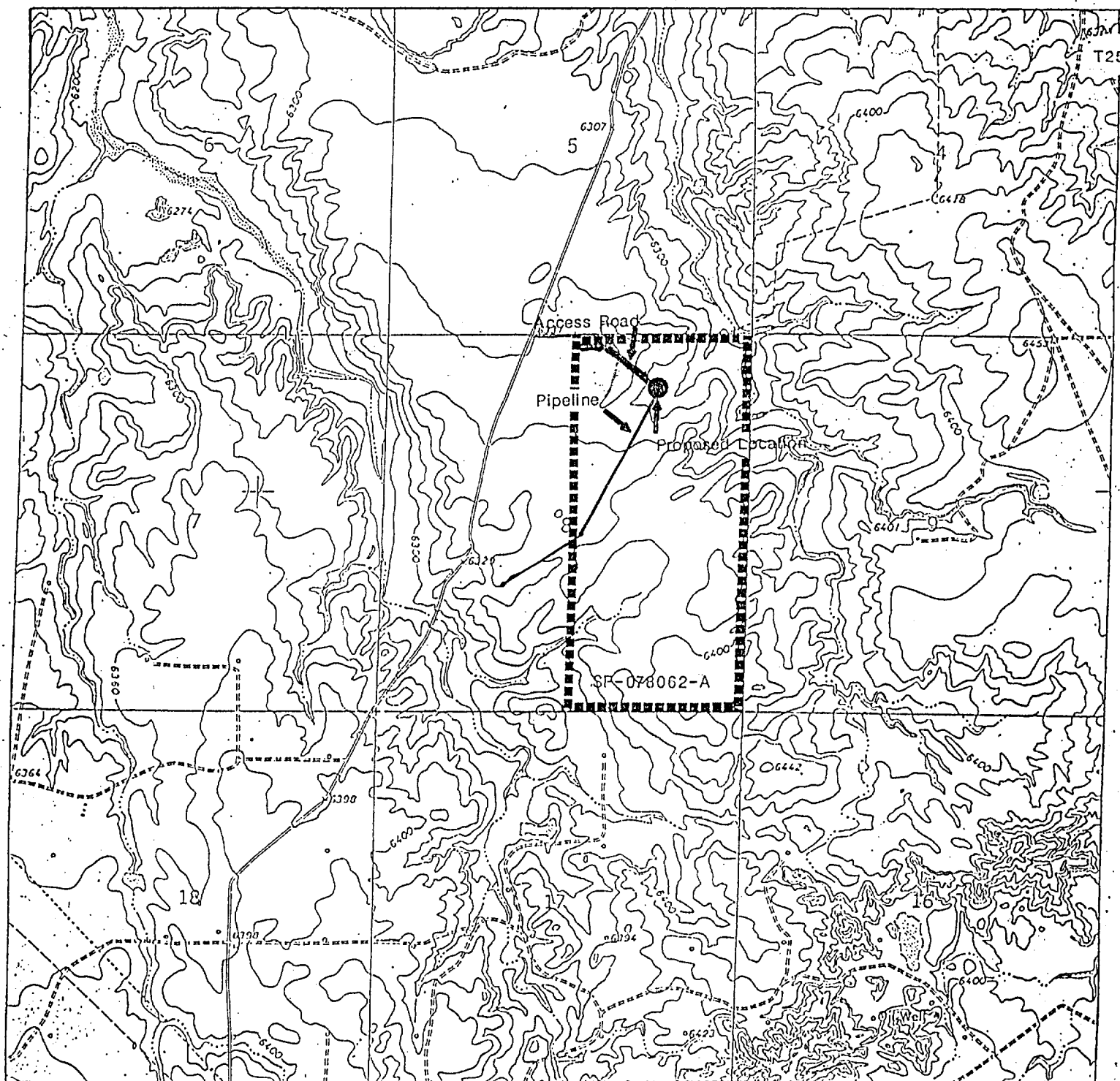
SURVEYOR CERTIFICATION

I hereby certify that the well location shown on this plat was plotted from field notes of actual surveys made by me or under my supervision, and that the same is true and correct to the best of my knowledge and belief.

Date Surveyed
January 10, 1990
Signature & Seal of Professional Surveyor
Edgar E. Risenhoover
Certificate No. 5979
Edgar E. Risenhoover, P.S.

R 11 W

T25N



HIXON DEVELOPMENT COMPANY

East Blstl Coal 8 #1

795' FNL 1230' FEL

Section 8, T25N, R11W

SAN JUAN COUNTY, NEW MEXICO