

UNITED STATES  
DEPARTMENT OF THE INTERIOR  
BUREAU OF LAND MANAGEMENT

APPLICATION FOR PERMIT TO DRILL, DEEPEN, OR PLUG BACK

1a. TYPE OF WORK  
DRILL ☒ 90 JUN 25 4:26 DEEPEN ☐ PLUG BACK ☐

b. TYPE OF WELL  
OIL WELL ☐ GAS WELL ☒ OTHER ☐ SINGLE ZONE ☒ MULTIPLE ZONE ☐

2. NAME OF OPERATOR  
Hixon Development Company

3. ADDRESS OF OPERATOR  
P. O. Box 2810, Farmington, New Mexico 87401

4. LOCATION OF WELL (Report location clearly and in accordance with any State requirements.)\*  
At surface 1300' FSL and 1340' FWL  
At proposed prod. zone Section 10, T25N, R12W, NMPM

14. DISTANCE IN MILES AND DIRECTION FROM NEAREST TOWN OR POST OFFICE\*  
22 miles southeast of Farmington, NM

10. DISTANCE FROM PROPOSED\* LOCATION TO NEAREST PROPERTY OR LEASE LINE, FT. (Also to nearest drlg. unit line, if any) 1300'

16. NO. OF ACRES IN LEASE 1000.00

17. NO. OF ACRES ASSIGNED TO THIS WELL 320

18. DISTANCE FROM PROPOSED LOCATION\* TO NEAREST WELL, DRILLING, COMPLETED, OR APPLIED FOR, ON THIS LEASE, FT. 35'

19. PROPOSED DEPTH 1200'

20. ROTARY OR CABLE TOOLS Rotary

21. ELEVATIONS (Show whether DF, RT, GR, etc.)  
This well is to be drilled to a depth of 1340' FSL and 1385.3' GLE  
and appeal pursuant to 43 CFR 3165.4.

22. APPROX. DATE WORK WILL START\*  
February 20, 1990

| PROPOSED CASING AND CEMENTING PROGRAM |                |                 |               | DRILLING OPERATIONS AUTHORIZED ARE<br>SUBJECT TO COMPLIANCE WITH ATTACHED<br>"GENERAL REQUIREMENTS"  |
|---------------------------------------|----------------|-----------------|---------------|--|
| SIZE OF HOLE                          | SIZE OF CASING | WEIGHT PER FOOT | SETTING DEPTH |  |
| 8-3/4"                                | 7"             | 20#             | 110'          | 60 sks (1.18 ft <sup>3</sup> /sk)<br>cmt to surface  |
| 6-1/4"                                | 4-1/2"         | 10.5#           | 1200'         | 125 sks cmt to surface<br>(75 sks - 2.06 ft <sup>3</sup> /sk)<br>(50 sks - 1.18 ft <sup>3</sup> /sk) |

It is proposed to drill the subject Basin Fruitland Coal Well. It will be evaluated on the basis of open hole logs. Please see attached Onshore Oil and Gas Order No. 1 data.

RECEIVED  
MAY 11 1990  
OIL CON. DIV  
DIST. 3

IN ABOVE SPACE DESCRIBE PROPOSED PROGRAM: If proposal is to deepen or plug back, give data on present productive zone and proposed new productive zone. If proposal is to drill or deepen directionally, give pertinent data on subsurface locations and measured and true vertical depths. Give blowout preventer program, if any.

24. SIGNED John C. Corbett TITLE Vice-President-Exploration DATE January 22, 1990  
(This space for Federal or State office use)

PERMIT NO. \_\_\_\_\_ APPROVAL DATE \_\_\_\_\_

APPROVED BY \_\_\_\_\_ TITLE \_\_\_\_\_  
CONDITIONS OF APPROVAL, IF ANY:

NMOCD

MAY 08 1990  
AREA MANAGER

\*See Instructions On Reverse Side

UNIVERSITY OF  
MICHIGAN  
VIA AIR MAIL  
ANN ARBOR  
MICHIGAN

Submit to Appropriate  
District Office  
State Lease - 4 copies  
Fee Lease - 3 copies

State of New Mexico  
Energy, Minerals and Natural Resources Department

Form C-102  
Revised 1-1-89

DISTRICT I  
P.O. Box 1980, Hobbs, NM 88240

DISTRICT II  
P.O. Drawer DD, Artesia, NM 88210

DISTRICT III  
1000 Rio Brazos Rd., Aztec, NM 87410

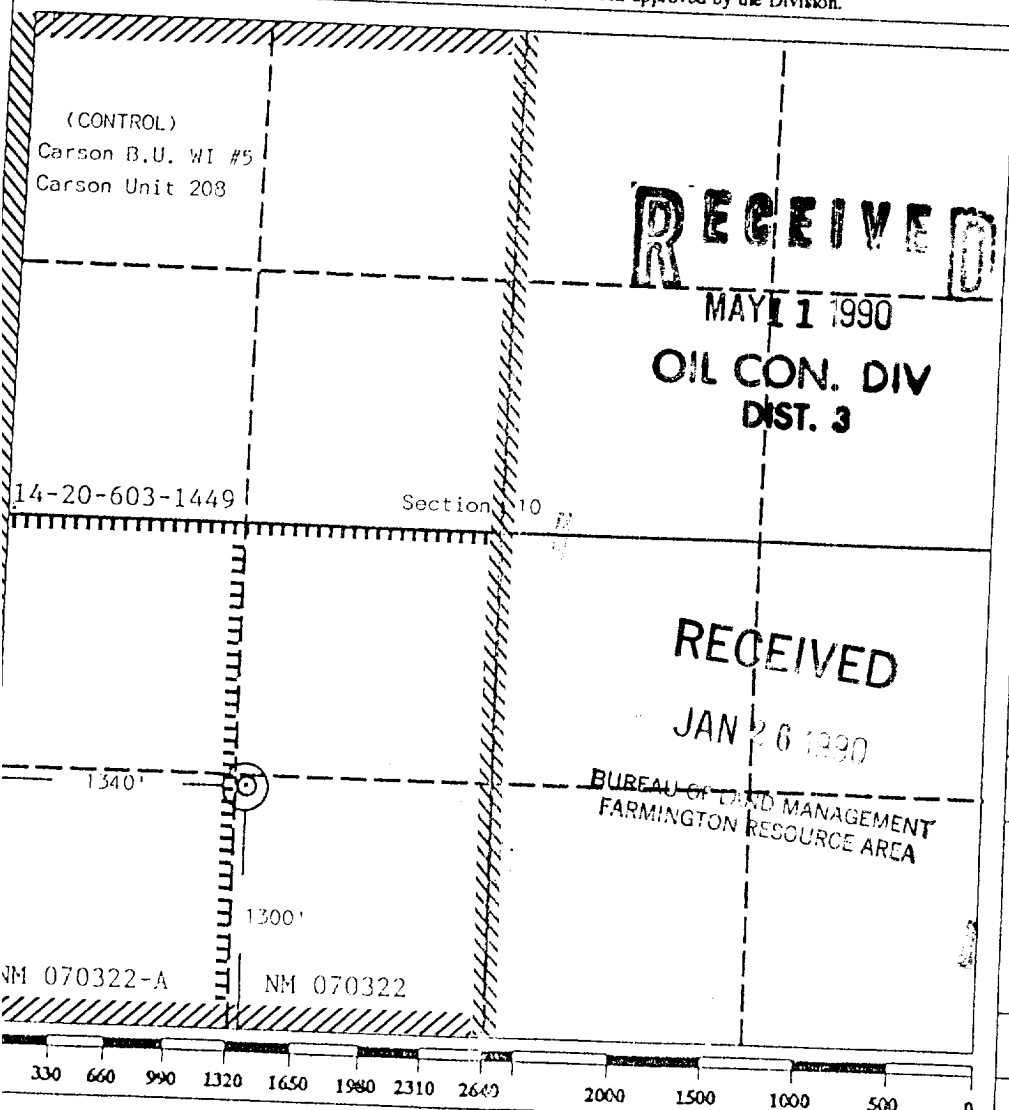
OIL CONSERVATION DIVISION  
P.O. Box 2088  
Santa Fe, New Mexico 87504-2088

WELL LOCATION AND ACREAGE DEDICATION PLAT

All Distances must be from the outer boundaries of the section

|  |               |                                  |                         |                              |                                 |
|--|---------------|----------------------------------|-------------------------|------------------------------|---------------------------------|
| Operator<br>Hixon Development Company  |               |                                  | Lease<br>Carson Unit 10 |                              | Well No.<br>323-10              |
| Unit Letter<br>N   | Section<br>10 | Township<br>25 North             | Range<br>12 West        | County<br>San Juan           |                                 |
| Actual Footage Location of Well:<br>1300 feet from the South line and 1340 feet from the West line |               |                                  |                         |                              |                                 |
| Ground level Elev.<br>6205   |               | Producing Formation<br>Fruitland |                         | Pool<br>Basin Fruitland Coal |                                 |
|  |               |                                  |                         |                              | Dedicated Acreage:<br>320 Acres |

- Outline the acreage dedicated to the subject well by colored pencil or hatchure marks on the plat below.
- If more than one lease is dedicated to the well, outline each and identify the ownership thereof (both as to working interest and royalty).
- If more than one lease of different ownership is dedicated to the well, have the interest of all owners been consolidated by communitization, unitization, force-pooling, etc?  
☐ Yes ☐ No If answer is "yes" type of consolidation \_\_\_\_\_  
If answer is "no" list the owners and tract descriptions which have actually been consolidated. (Use reverse side of this form if necessary.)  
No allowable will be assigned to the well until all interests have been consolidated (by communitization, unitization, forced-pooling, or otherwise) or until a non-standard unit, eliminating such interest, has been approved by the Division.



OPERATOR CERTIFICATION

I hereby certify that the information contained herein is true and complete to the best of my knowledge and belief.

Signature  
John C. Corbett  
Printed Name  
John C. Corbett  
Position  
Vice President-Exploration  
Company  
Hixon Development Company  
Date  
January 10, 1990

SURVEYOR CERTIFICATION

I hereby certify that the well location shown on this plat was plotted from field notes of actual surveys made by me or under my supervision, and that the same is true and correct to the best of my knowledge and belief.

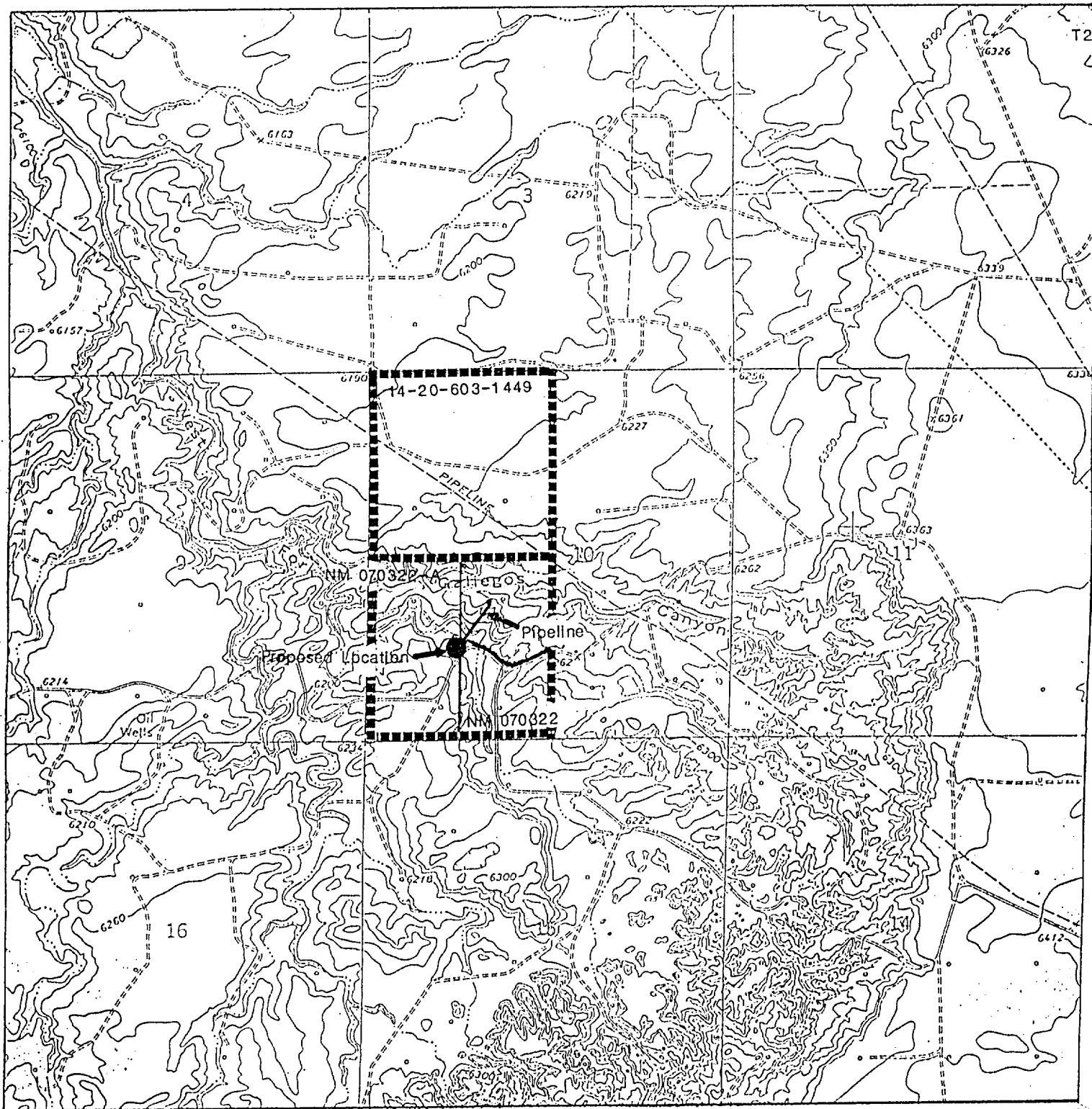
Date Surveyed  
January 5, 1990

Signature & Seal of Professional Surveyor  
EDGAR L. RISENHOOVER  
Edgar L. Risenhoover  
Certificate No. 5970  
REGISTERED LAND SURVEYOR

R12W

T26N

T25N



HIxon DEVELOPMENT COMPANY

Carson Unit 323-10  
1300' FSL 1340' FWL  
Section 10, T25N, R12W

SAN JUAN COUNTY, NEW MEXICO