

UNITED STATES
DEPARTMENT OF THE INTERIOR
BUREAU OF LAND MANAGEMENT

30-045-28388

5. LEASE DESIGNATION AND SERIAL NO.
(A) NM-58138
(B) NM-33917

APPLICATION FOR PERMIT TO DRILL, DEEPEN, OR PLUG BACK

1a. TYPE OF WORK

DRILL ☒

DEEPEN ☐

PLUG BACK ☐

b. TYPE OF WELL

OIL
WELL ☐

GAS
WELL ☒

OTHER

SINGLE
ZONE ☒

MULTIPLE
ZONE ☐

2. NAME OF OPERATOR

Giant Exploration & Production Company 8987

3. ADDRESS OF OPERATOR

P.O. Box 2810 Farmington New Mexico 87499 (505) 326-3325

4. LOCATION OF WELL (Report location clearly and in accordance with any State requirements.)*

At surface

790' FNL, and 790' FEL

At proposed prod. zone

Section 13, T25N, R13W

14. DISTANCE IN MILES AND DIRECTION FROM NEAREST TOWN OR POST OFFICE*

22.8 miles South of Farmington, NM

15. DISTANCE FROM PROPOSED*

LOCATION TO NEAREST
PROPERTY OR LEASE LINE, FT.
(Also to nearest drlg. unit line, if any)

790'

16. NO. OF ACRES IN LEASE

360 Acres

17. NO. OF ACRES ASSIGNED
TO THIS WELL

E/ 320 Acres

18. DISTANCE FROM PROPOSED LOCATION*
TO NEAREST WELL, DRILLING, COMPLETED,
OR APPLIED FOR, ON THIS LEASE, FT.

130'

19. PROPOSED DEPTH

1600'

20. ROTARY OR CABLE TOOLS

Rotary

21. ELEVATIONS (Show whether DF, RT, GR, etc.)

GLE-6458'

22. APPROX. DATE WORK WILL START*

August 26, 1990

23. PROPOSED DRILLING AND COMPLETION PROGRAM

DRILLING OPERATIONS AUTHORIZED ARE
SUBJECT TO COMPLIANCE WITH ATTACHED

SIZE OF HOLE	SIZE OF CASING	WEIGHT PER FOOT	SETTING DEPTH
8-3/4"	7"	20#	110'
6-1/4"	4-1/2"	9.5#	1600'

* GENERAL REQUIREMENTS

90sks (1.18 ft³/sk)

cmt to surface

(190 sks cmt to surface)

(90 sks - 2.06 ft³/sk)

(100 sks - 1.18 ft³/sk)

It is proposed to drill the subject Basin Fruitland Coal Well. It will be evaluated on the basis of open hole logs. Please see attached Onshore Oil and gas Order No. 1 data.

RECEIVED
NOV 09 1990
OIL CON. DIV.
DIST. 2

IN ABOVE SPACE DESCRIBE PROPOSED PROGRAM: If proposal is to deepen or plug back, give data on present productive zone and proposed new productive zone. If proposal is to drill or deepen directionally, give pertinent data on subsurface locations and measured and true vertical depths. Give blowout preventer program, if any.

24.

SIGNED

John C. Corbett

TITLE Vice President-Exploration

DATE August 9, 1990

(This space for Federal or State office use)

PERMIT NO.

APPROVAL DATE

APPROVED BY

TITLE

DATE

CONDITIONS OF APPROVAL, IF ANY:

Held C-104 for C/A (2) NMOC

Ken Townsend

*See Instructions On Reverse Side

Submit to Appropriate
District Office
State Lease - 4 copies
Fee Lease - 3 copies

State of New Mexico
Energy, Minerals and Natural Resources Department

Form C-102
Revised 1-1-89

OIL CONSERVATION DIVISION

P.O. Box 2088

Santa Fe, New Mexico 87504-2088

DISTRICT I

P.O. Box 1980, Hobbs, NM 88240

DISTRICT II

P.O. Drawer DD, Artesia, NM 88210

DISTRICT III

1000 Rio Brazos Rd., Aztec, NM 87410

WELL LOCATION AND ACREAGE DEDICATION PLAT

All Distances must be from the outer boundaries of the section

Operator Giant Exploration & Production Company			Lease West Bisti Coal 13		Well No. 1
Unit Letter A	Section 13	Township 25 North	Range 13 West	County San Juan	
Actual Footage Location of Well: 790 feet from the North line and 790 feet from the East line					
Ground level Elev. 6458	Producing Formation Fruitland	Pool Basin Fruitland Coal		Dedicated Acreage: 320 Acres	

- Outline the acreage dedicated to the subject well by colored pencil or hatchure marks on the plat below.
- If more than one lease is dedicated to the well, outline each and identify the ownership thereof (both as to working interest and royalty).
- If more than one lease of different ownership is dedicated to the well, have the interest of all owners been consolidated by communitization, unitization, force-pooling, etc?
☐ Yes ☒ No If answer is "yes" type of consolidation _____
If answer is "no" list the owners and tract descriptions which have actually been consolidated. (Use reverse side of this form if necessary. Lease will be consolidated.)
No allowable will be assigned to the well until all interests have been consolidated (by communitization, unitization, forced-pooling, or otherwise) or until a non-standard unit, eliminating such interest, has been approved by the Division.

RECEIVED
NOV 09 1990
OIL CON. DIV.
DIST. 3

Section 13

NM 33917

NM 58138

OPERATOR CERTIFICATION

I hereby certify that the information contained herein is true and complete to the best of my knowledge and belief.

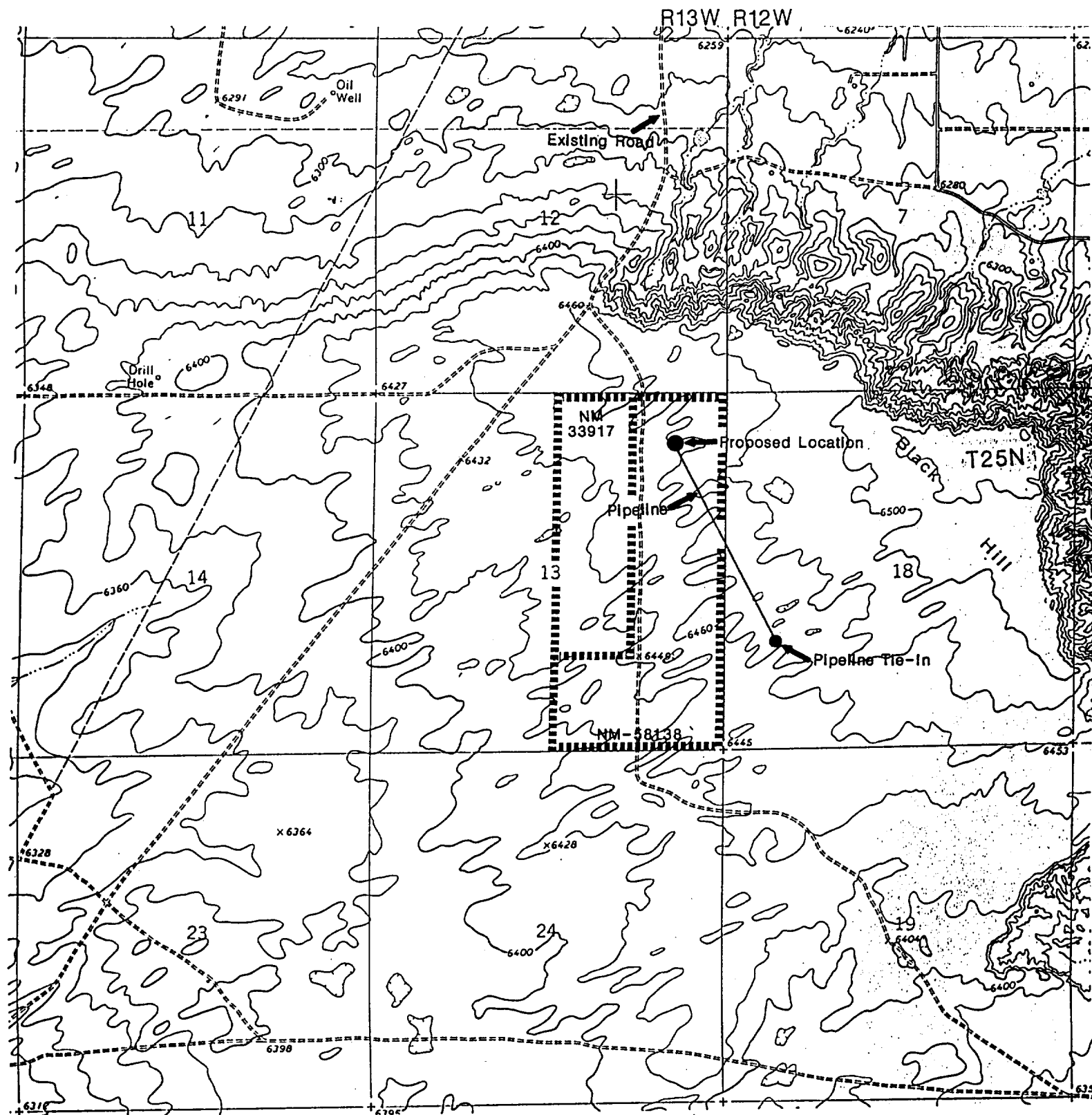
Signature
John C. Corbett
Printed Name
John C. Corbett
Position
Vice President - Exploration
Company
Giant Exploration & Production Co.
Date
July 23, 1990

SURVEYOR CERTIFICATION

I hereby certify that the well location shown on this plat was plotted from field notes of actual surveys made by me or under my supervision, and that the same is true and correct to the best of my knowledge and belief.

Date Surveyed
July 5, 1990

Signature & Seal of Professional Surveyor
Edgar L. Risenhoover
NEW MEXICO
5879
Edgar L. Risenhoover



GIANT EXPLORATION & PRODUCTION COMPANY

West Bisti Coal 13 No. 1
 790'FNL 790'FEL
 Section 13, T25N, R13W
 San Juan County, New Mexico