

5 BLM
1 File

SUBMIT IN TRIPLICATE*

(Other instructions on
reverse side)Form approved.
Budget Bureau No. 42-B1425UNITED STATES
DEPARTMENT OF THE INTERIOR
GEOLOGICAL SURVEY

30-045-28804

RECEIVED
BLM

APPLICATION FOR PERMIT TO DRILL, DEEPEN, OR PLUG BACK

3. LEASE DESIGNATION AND SERIAL NO.

SF-078155

5. IF INDIAN, ALLOTTEE OR TRIBE NAME

6. UNIT AGREEMENT NAME

7. FARM OR LEASE NAME

Jeter 13660

9. WELL NO.

4

10. FIELD AND POOL, OR WILDCAT

Basin Fruitland Coal

11. SEC., T., R., M., OR BLK.
AND SURVEY OR AREA

Sec. 1, T25N, R13W, NMPM

12. COUNTY OR PARISH 13. STATE

San Juan

NM

1a. TYPE OF WORK

DRILL ☒DEEPEN ☐92 JUN -5 AM 8:05
PLUG BACK ☐

b. TYPE OF WELL

OIL
WELL ☐GAS
WELL ☒

OTHER

SINGLE
ZONE ☒MULTIPLE
ZONE ☐

619 FARMINGTON, NM

2. NAME OF OPERATOR

DUGAN PRODUCTION CORP.

3. ADDRESS OF OPERATOR

P.O. Box 420, Farmington, NM 87499

4. LOCATION OF WELL (Report location clearly and in accordance with any State requirements.)*

At surface

875' FNL & 945' FEL

At proposed prod. zone

14. DISTANCE IN MILES AND DIRECTION FROM NEAREST TOWN OR POST OFFICE*

approx. 4 miles SW of EPNG's Chaco Plant

15. DISTANCE FROM PROPOSED*

LOCATION TO NEAREST
PROPERTY OR LEASE LINE, FT.
(Also to nearest drig. unit line, if any)

875'

16. NO. OF ACRES IN LEASE

1599.72

17. NO. OF ACRES ASSIGNED-

TO THIS WELL

N/320

31752

18. DISTANCE FROM PROPOSED LOCATION*

TO NEAREST WELL, DRILLING, COMPLETED,
OR APPLIED FOR, ON THIS LEASE, FT.

approx. 400'

from DPC's WBU#161

19. PROPOSED DEPTH

1270'

20. ROTARY OR CABLE TOOLS

Rotary

21. ELEVATIONS (Show whether DF, RT, GR, etc.)

GL 6195' est. This action is subject to technical and

22. APPROX. DATE WORK WILL START*

ASAP

23. PROPOSED CASING AND CEMENTING PROGRAM
and appeal pursuant to 43 CFR 3.165.3

SIZE OF HOLE	SIZE OF CASING	WEIGHT PER FOOT	SETTING DEPTH	QUANTITY OF CEMENT
9-7/8"	7"	20#	90' / 120'	40 sx (48 cu.ft.) circ. to surf.
6-1/4"	4 1/2"	10.5#	1270'	115 sx (192 cu.ft.) circ. to surf.

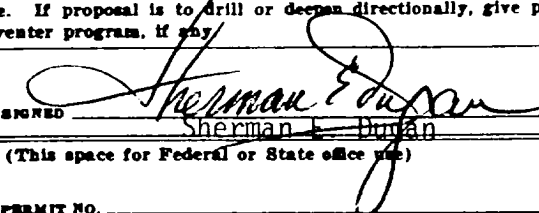
Plan to drill a 9-7/8" hole and set 90' of 7" OD, 20#, J-55 surface casing; then plan to drill a 6-1/4" hole to total depth with gel-water-mud program to test Fruitland Coal formation. Plan to run IES and CDL logs. If determined productive, will run 4 1/2", 10.5#, J-55 casing, selectively perforate, frac, clean out after frac and complete well.

RECEIVED
OCT 27 1992
OIL CON. DIST. 3

IN ABOVE SPACE DESCRIBE PROPOSED PROGRAM: If proposal is to deepen or plug back, give data on present productive zone and proposed new productive zone. If proposal is to drill or deepen directionally, give pertinent data on subsurface locations and measured and true vertical depths. Give blowout preventer program, if any.

24.

SIGNED



TITLE

Vice-President

DATE

5-29-92

(This space for Federal or State office use)

PERMIT NO.

APPROVAL DATE

APPROVED
AS AMENDED

APPROVED BY

TITLE

DATE

CONDITIONS OF APPROVAL, IF ANY:

OCT 26 1992

NMOCD

*See Instructions On Reverse Side

AREA MANAGER

Submit to Appropriate
District Office
State Lease - 4 copies
Fee Lease - 3 copies

State of New Mexico
Energy, Minerals and Natural Resources Department

Form C-102
Revised 1-1-89

OIL CONSERVATION DIVISION

P.O. Box 2088
Santa Fe, New Mexico 87504-2088

RECEIVED
BLM

92 JUN -5 AM 8:05

DISTRICT I
P.O. Box 1980, Hobbs, NM 88240

DISTRICT II
P.O. Drawer DD, Artesia, NM 88210

DISTRICT III
1000 Rio Brazos Rd., Aztec, NM 87410

WELL LOCATION AND ACREAGE DEDICATION PLAT

All Distances must be from the outer boundaries of the section

519 FARMINGTON, N.M.

Operator Dugan Production Corporation			Lease Jeter		Well No. 4
Unit Letter A	Section 1	Township 25 North	Range 13 West	County San Juan	
Actual Footage Location of Well: 875 feet from the North line and 945 feet from the East line					
Ground level Elev. 6195 Est.	Producing Formation Fruitland Coal		Pool Basin Fruitland Coal		Dedicated Acreage: 320 Acres

- Outline the acreage dedicated to the subject well by colored pencil or hatchure marks on the plat below.
- If more than one lease is dedicated to the well, outline each and identify the ownership thereof (both as to working interest and royalty).
- If more than one lease of different ownership is dedicated to the well, have the interest of all owners been consolidated by communitization, unitization, force-pooling, etc?
☐ Yes ☐ No If answer is "yes" type of consolidation _____
If answer is "no" list the owners and tract descriptions which have actually been consolidated. (Use reverse side of this form if necessary).
No allowable will be assigned to the well until all interests have been consolidated (by communitization, unitization, forced-pooling, or otherwise) or until a non-standard unit, eliminating such interest, has been approved by the Division.

OPERATOR CERTIFICATION

I hereby certify that the information contained herein is true and complete to the best of my knowledge and belief.

Signature Sherman E. Dugan
Printed Name
Sherman E. Dugan
Position
Vice-President
Company
Dugan Production Corp.
Date
5-29-92

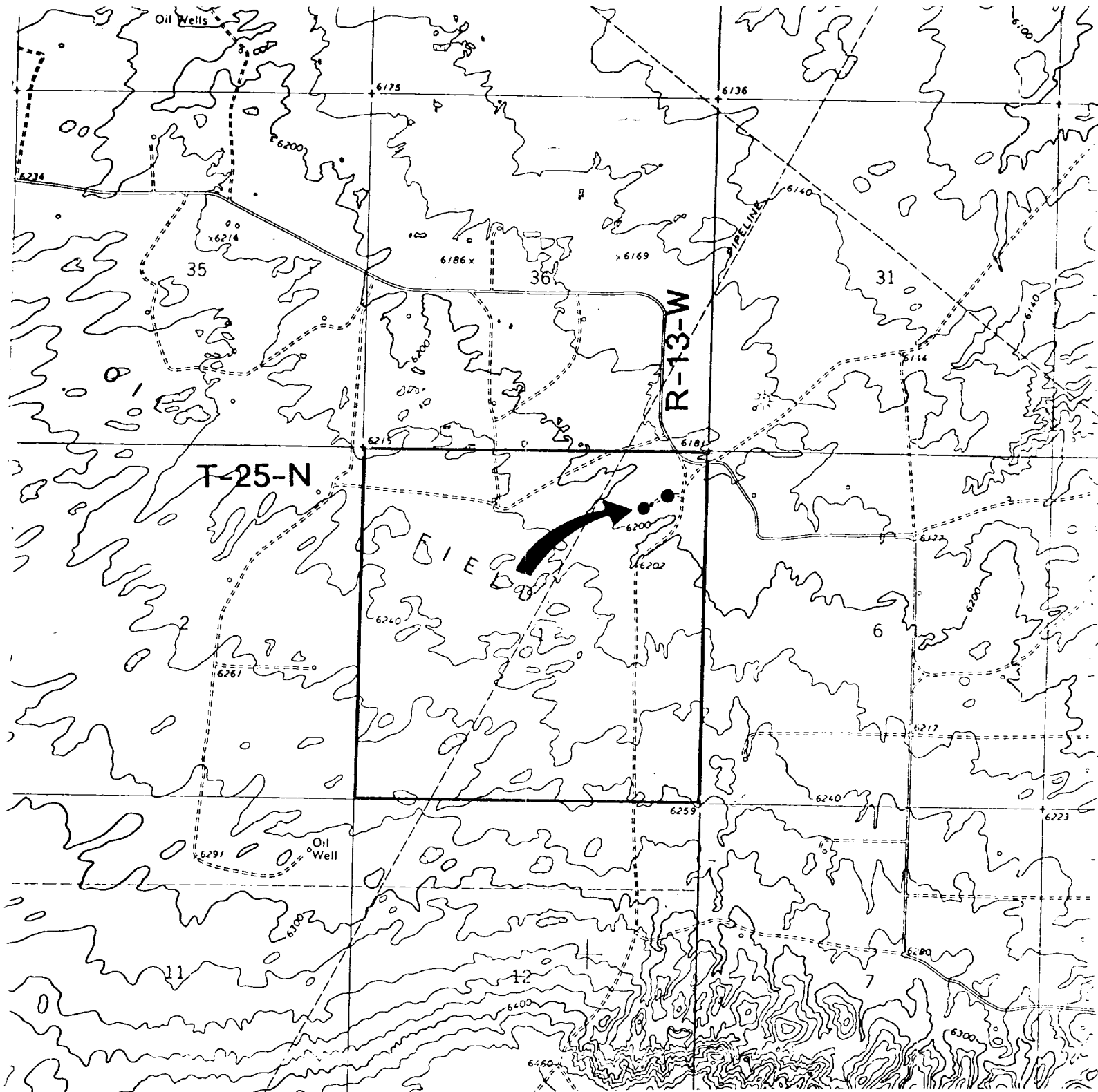
SURVEYOR CERTIFICATION

I hereby certify that the well location shown on this plat was plotted from field notes of actual surveys made by me or under my supervision, and that the same is true and correct to the best of my knowledge and belief.

Date Surveyed
May 8, 1992

Signature & Seal of Professional Surveyor
Edgar L. Risenhoover
Edgar L. Risenhoover
5579
REGISTERED LAND SURVEYOR
NEW MEXICO
15379

Dugan Prod. SF-078155		875'
		945'
Section 1		
RECEIVED OCT 27 1992 OIL CONSERVATION DIVISION		
0 330 660 990 1320 1650 1980 2310 2640 2000 1500 1000 500 0		



Existing Roads

Exhibit E

Vicinity of nearest town or reference pt.
approx. 4 miles SW of EPNG Chaco Plant

Type of surface dirt

Conditions good

Other _____

Reference map: USGS map: Moncisco Wash,
N.Mex. 1966/1978

Planned Access Road(s)

Exhibit E

Width 20' Maximum grades 1%

Drainage design as required

Cuts & Fills as required

Surfacing material none

☒ Turnouts

☐ Culverts

☒ Gates

☐ Cattleguards

☒ Fence cuts

☒ Waterbars

**No New Access
Required**

Access road(s) ☒ do/do not cross Fed/☒ Ind land.