

CONFIDENTIAL
UNITED STATES
DEPARTMENT OF THE INTERIOR
BUREAU OF LAND MANAGEMENT

SUBMIT IN TRIPPLICATE*
(Other instructions on
reverse side)

Form approved.
Budget Bureau No. 1004-0136
Expires August 31, 1985

APPLICATION FOR PERMIT TO DRILL, DEEPEN, OR PLUG BACK

1a. TYPE OF WORK

DRILL ☒

DEEPEN ☐

PLUG BACK ☐

b. TYPE OF WELL

OIL
WELL ☒

GAS
WELL ☐

OTHER

SINGLE
ZONE ☒

MULTIPLE
ZONE ☐

2. NAME OF OPERATOR

Redwolf Production, Inc.

3. ADDRESS OF OPERATOR

P. O. Box 5382 Farmington, NM 87499

4. LOCATION OF WELL (Report location clearly and in accordance with any State requirements.*)

At surface

929' FNL, 867' FVL

At proposed prod. zone

Same

14. DISTANCE IN MILES AND DIRECTION FROM NEAREST TOWN OR POST OFFICE*

33 miles Southeast of Farmington, NM

15. DISTANCE FROM PROPOSED*

LOCATION TO NEAREST
PROPERTY OR LEASE LINE, FT.
(Also to nearest drlg. unit line, if any)

867'

16. NO. OF ACRES IN LEASE

240.72

17. NO. OF ACRES ASSIGNED
TO THIS WELL

80

18. DISTANCE FROM PROPOSED LOCATION*
TO NEAREST WELL, DRILLING, COMPLETED,
OR APPLIED FOR, ON THIS LEASE, FT.

19. PROPOSED DEPTH

4970'

20. ROTARY OR CABLE TOOLS

Rotary

21. ELEVATIONS (Show whether DF, RT, GR, etc.)

6414' GR

22. APPROX. DATE WORK WILL START*

As soon as permitted

23.

PROPOSED CASING AND CEMENTING PROGRAM

This action is subject to technical and
procedural review pursuant to 43 CFR 3165.3
and appeal pursuant to 43 CFR 3165.4.

SIZE OF HOLE	SIZE OF CASING	WEIGHT PER FOOT	SETTING DEPTH	
12 1/4"	8 5/8"	24#	240'	150 sx (circ. to surface)
7 7/8"	5 1/2"	15.5#	4970'	400 sx (circ. to surface)

TIGHT HOLE. PLEASE KEEP CONFIDENTIAL.

Notice of Staking submitted 9/8/92.

RECEIVED
DEC 18 1992
OIL CON. DIV.
DIST. 3

RECEIVED
BLM
92 OCT -7 AM 10:48
019 FARMINGTON, N.M.

IN ABOVE SPACE DESCRIBE PROPOSED PROGRAM: If proposal is to deepen or plug back, give data on present productive zone and proposed new productive zone. If proposal is to drill or deepen directionally, give pertinent data on subsurface locations and measured and true vertical depths. Give blowout preventer program, if any.

24.

SIGNED Bruce C. Delventhal

TITLE Engineer

DATE Oct. 7, 1992

(This space for Federal or State office use)

PERMIT NO. _____

APPROVAL DATE _____

**APPROVED
AS AMENDED**

APPROVED BY _____

TITLE _____

DATE _____

CONDITIONS OF APPROVAL, IF ANY:

NMOCD

*See Instructions On Reverse Side

AREA MANAGER

Submit to Appropriate
District Office
State Lease - 4 copies
Fee Lease - 3 copies

State of New Mexico
Energy, Minerals and Natural Resources Department

OIL CONSERVATION DIVISION

P.O. Box 2088
Santa Fe, New Mexico 87504-2088

Form C-102
Revised 1-1-89

RECEIVED
BLM

DISTRICT I
P.O. Box 1980, Hobbs, NM 88240

DISTRICT II
P.O. Drawer DD, Artesia, NM 88210

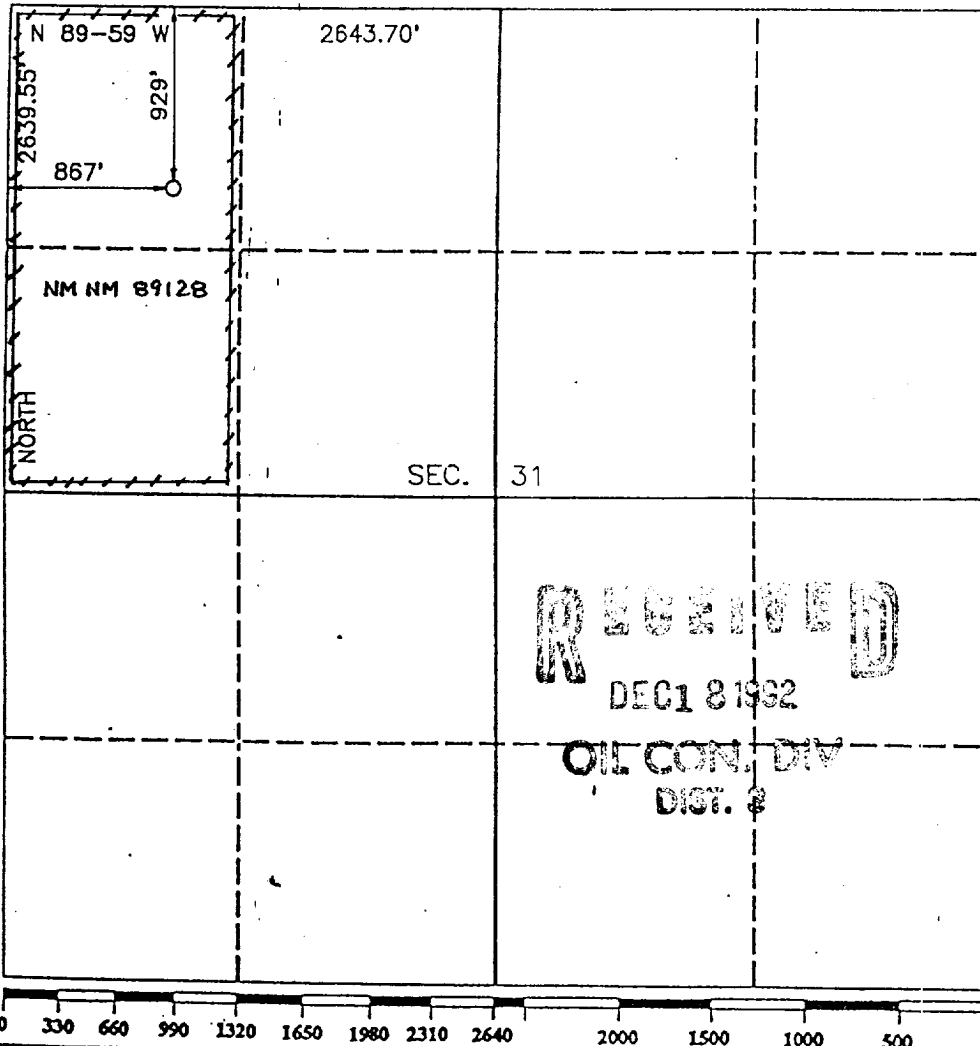
DISTRICT III
1000 Rio Brazos Rd., Aztec, NM 87410

WELL LOCATION AND ACREAGE DEDICATION PLAT

All Distances must be from the outer boundaries of the section

Operator REDWOLF PRODUCTION, INC.			Lease E.L.			Well No. 1		
Unit Letter D	Section 31	Township T.25 N.	Range R.11 W.	County SAN JUAN				
Actual Footage Location of Well: 929 feet from the NORTH line and 867 feet from the WEST line								
Ground level Elev. 6414		Producing Formation Gallup		Pool Bisti Lower Gallup CAT		Dedicated Acreage: 80 Acres		

1. Outline the acreage dedicated to the subject well by colored pencil or hatchure marks on the plat below.
2. If more than one lease is dedicated to the well, outline each and identify the ownership thereof (both as to working interest and royalty).
3. If more than one lease of different ownership is dedicated to the well, have the interest of all owners been consolidated by communitization, unitization, force-pooling, etc.?
☐ Yes ☐ No If answer is "yes" type of consolidation _____
If answer is "no" list the owners and tract descriptions which have actually been consolidated. (Use reverse side of this form if necessary). _____
No allowable will be assigned to the well until all interests have been consolidated (by communitization, unitization, forced-pooling, or otherwise) or until a non-standard unit, eliminating such interest, has been approved by the Division.



OPERATOR CERTIFICATION

I hereby certify that the information contained herein is true and complete to the best of my knowledge and belief.

Signature
Bruce E. Delventhal
Printed Name
Bruce E. Delventhal
Position
Engineer
Company
Redwolf Production, Inc.
Date
October 7, 1992

SURVEYOR CERTIFICATION

I hereby certify that the well location shown on this plat was plotted from field notes of actual surveys made by me or under my supervision, and that the same is true and correct to the best of my knowledge and belief.

Date Surveyed
SEPTEMBER 4, 1992
Signature & Seal
ROY A. RUSH
Professional Surveyor
8894
Certificate No.
8894

00'
36°30'
2 000 00'
FEET



E. L. #1