

UNITED STATES
DEPARTMENT OF THE INTERIOR
BUREAU OF LAND MANAGEMENT

Submit 5 - BLM, 6 - Tribal
(Other instructions on
reverse side)

FORM APPROVED
Budget Bureau No. 1004-0136
Expires: February 28, 1995

APPLICATION FOR PERMIT TO DRILL OR DEEPEN

RECEIVED
BLM

5. LEASE DESIGNATION AND SERIAL NO.
NOO-C-14-20-3618

6. IF INDIAN, ALLOTTEE OR TRIBE NAME
NAVAJO NATION ALLOTTEE

UNIT AGREEMENT NAME
CA - SWI-4298

8. FARM OR LEASE NAME, WELL NO..
CANYON #7E

9. API WELL NO.
30-045-29710

10. FIELD AND POOL, OR WILDCAT
BASIN DAKOTA

11. SEC., T., R., OR BLK
AND SURVEY OR AREA
SEC. 15, T25N-R11W

12. COUNTY OR PARISH 13. STATE
SAN JUAN NM

1a. Type of Work

DRILL ☒

DEEPEN ☐

1b. TYPE OF WELL

OIL WELL ☐

GAS WELL ☒

OTHER ☐

Single ☒

Multiple ☐

Zone

Zone

2. NAME OF OPERATOR

CROSS TIMBERS OPERATING COMPANY

3. ADDRESS AND TELEPHONE NO.

6001 HIGHWAY 64, FARMINGTON, NM 87401 505-632-5250

4. LOCATION OF WELL (Report location clearly and in accordance with any State requirements.)

At Surface: 1500' FNL - 1500' FEL

At proposed prod. zone>

14. DISTANCE IN MILES AND DIRECTIONS FROM NEAREST TOWN OR POST

Approximately 24 miles from southern edge of Bloomfield New Mexico city limits.
Please see Surface Use Program for further details.

15. DISTANCE FROM PROPOSED* LOCATION TO
NEAREST PROPERTY OR LEASE LINE, FT. (Also
to nearest drlg. Unit line, if any.)

1500' FNL

16. NO. OF ACRES IN LEASE

160

17. NO. OF ACRES ASSIGNED TO THIS WELL

E/320

18. DISTANCE FROM PROPOSED* LOCATION TO
NEAREST WELL, DRILLING, COMPLETED OR APPLIED
ON THIS LEASE, FT.

790' FSL - 1450' FEL

19. PROPOSED DEPTH

6200'

20. ROTARY OR CABLE TOOLS

ROTARY

21. ELEVATIONS (Show whether DF, RT, GR, etc.)

6342'

22. APPROX. DATE WORK WILL START*

A.S.A.P.

23. PROPOSED CASING AND CEMENTING PROGRAM

SIZE OF HOLE	GRADE, SIZE OF CASING	WEIGHT PER FOOT	SETTING DEPTH	QUANTITY OF CEMENT
12-1/4"	8-5/8"	24# / J-55	300'	225 sx
7-7/8"	4-1/2"	10.5# / J-55	6200'	760 sx

This action is subject to technical and
procedural review pursuant to 43 CFR 3100.3
and appeal pursuant to 43 CFR 3100.4.

Please see the attached drilling, surface casing, production casing and Surface Use Programs as outlined by Cross
Timbers Operating Company for further details.

DRILLING OPERATIONS AUTHORIZED ARE
SUBJECT TO COMPLIANCE WITH ATTACHED
"GENERAL REQUIREMENTS"

IN ABOVE SPACE DESCRIBE PROPOSED PROGRAM: If proposal is to deepen, give data on present productive zone and proposed new productive zone. If proposal is to drill or
deepen directionally, give pertinent data on subsurface locations and measured and true and vertical depths. Give blowout preventer program, if any.

24.

SIGNED: Gary L. Markestad TITLE Gary L. Markestad, V.P. Production - Cross Timbers DATE: 09/22/98

(This space for Federal or State office use)

Permit Number:

Approval Date:

Application approval does not warrant or certify that the applicant holds legal or equitable to those rights in the subject lease which would entitle the applicant to conduct operations
thereon.

CONDITIONS OF APPROVAL, IF ANY

/s/ Duane W. Spencer

APPROVED BY

TITLE

DATE

OCT 28 1998

Title 18 U.S.C. Section 1001, makes it a crime for any person knowingly and willfully to make to any department or agency of the United States any false, fictitious or fraudulent statements or representations as to
any matter within its jurisdiction.

* See Instruction on Reverse Side

NNOC

District I
PO Box 1980, Hobbs, NM 88241-1980

State of New Mexico
Energy, Minerals & Natural Resources Department

Form C-102
Revised February 21, 1994

District II
PO Drawer DD, Artesia, NM 88211-0719

OIL CONSERVATION DIVISION

Submit to Appropriate District Office
State Lease - 4 Copies
Fee Lease - 3 Copies

District III
1000 Rio Brazos Rd., Aztec, NM 87410

PO Box 2088
Santa Fe, NM 87504-2088

District IV
PO Box 2088, Santa Fe, NM 87504-2088

93 SEP 22 PM 4:17

☐ AMENDED REPORT

WELL LOCATION AND ACREAGE DEDICATION PLAT

*API Number 30-045-29710	*Pool Code 71599	*Pool Name BASIN DAKOTA
*Property Code 022669	*Property Name CANYON	*Well Number 7E
*GRID No. 167067	*Operator Name CROSS TIMBERS OPERATING COMPANY	*Elevation 6342'

10 Surface Location

UL or lot no. G	Section 15	Township 25N	Range 11W	Lot Idn	Feet from the 1500	North/South line NORTH	Feet from the 1500	East/West line EAST	County SAN JUAN
--------------------	---------------	-----------------	--------------	---------	-----------------------	---------------------------	-----------------------	------------------------	--------------------

11 Bottom Hole Location If Different From Surface

UL or lot no.	Section	Township	Range	Lot Idn	Feet from the	North/South line	Feet from the	East/West line	County
12 Dedicated Acres		13 Joint or Infill		14 Consolidation Code		15 Order No.			

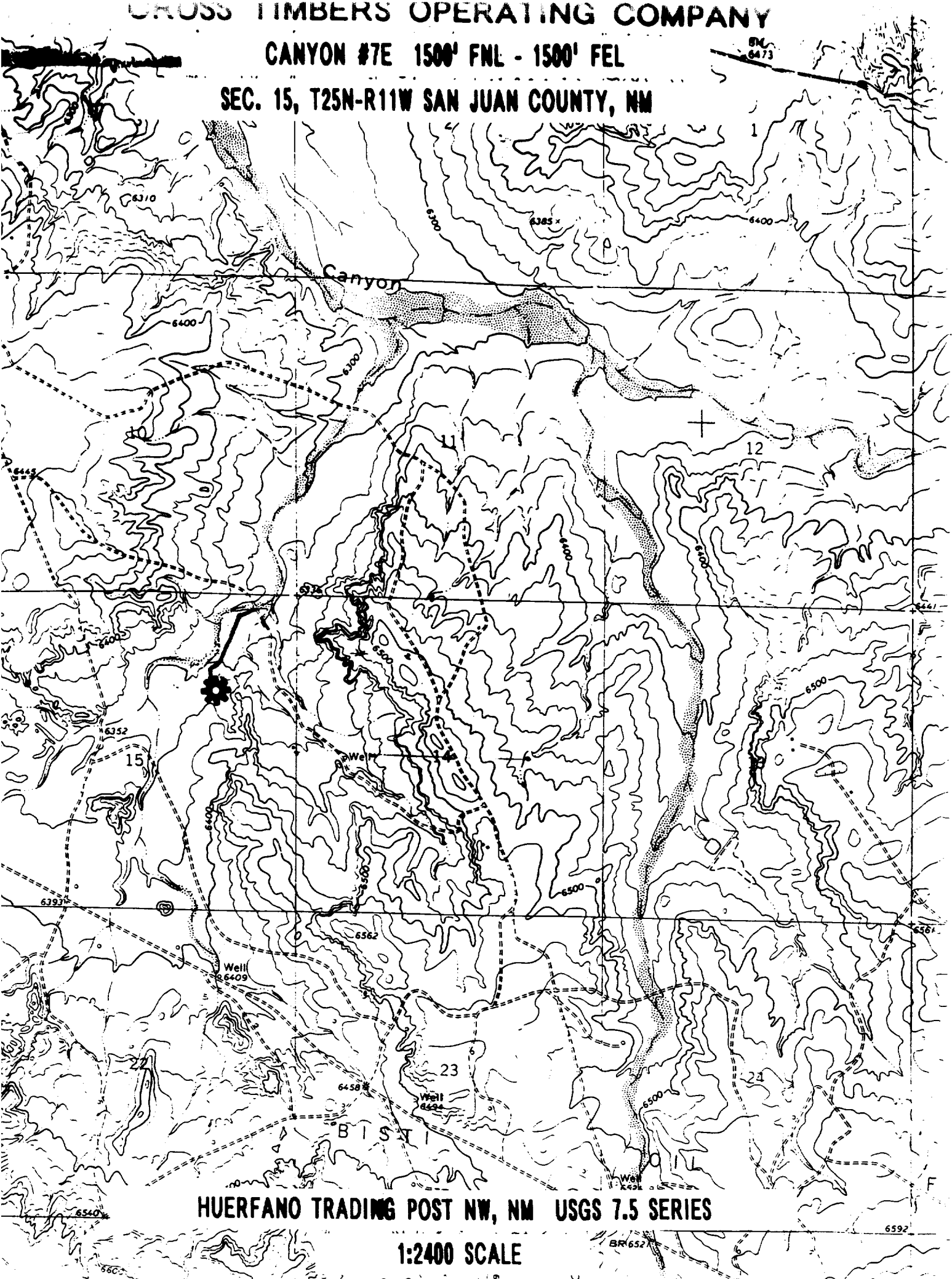
NO ALLOWABLE WILL BE ASSIGNED TO THIS COMPLETION UNTIL ALL INTERESTS HAVE BEEN CONSOLIDATED
OR A NON-STANDARD UNIT HAS BEEN APPROVED BY THE DIVISION

16	2622.18'	2638.02'	17 OPERATOR CERTIFICATION I hereby certify that the information contained herein is true and complete to the best of my knowledge and belief Signature Printed Name Title Date
2636.70'	RECEIVED OCT 29 1998 OIL CON. DIV DIST. 3	1500'	1500'
15	2634.06'	2642.64'	18 SURVEYOR CERTIFICATION I hereby certify that the well location shown on this plat was plotted from field notes of actual surveys made by me or under my supervision, and that the same is true and correct to the best of my belief. JULY 14, 1998 Date of Survey Signature and Seal of Professional Surveyor NEALE C. EDWARDS NEW MEXICO 6887 Certification Under Professional Surveyor

CROSS TIMBERS OPERATING COMPANY

CANYON #7E 1500' FNL - 1500' FEL

SEC. 15, T25N-R11W SAN JUAN COUNTY, NM



HUERFANO TRADING POST NW, NM USGS 7.5 SERIES

1:2400 SCALE