

UNITED STATES  
DEPARTMENT OF THE INTERIOR  
BUREAU OF LAND MANAGEMENT

FORM APPROVED  
Budget Bureau No. 1004-0135  
Expires: March 31, 1993

SUNDRY NOTICES AND REPORTS ON WELLS

Do not use this form for proposals to drill or to deepen or reentry to a different reservoir.

Use "APPLICATION FOR PERMIT -" for such proposals

SUBMIT IN TRIPLICATE

1. Type of Well

☐ Oil Well ☒ Gas Well ☐ Other

2. Name of Operator

ENERGEN RESOURCES CORPORATION

3. Address and Telephone No.

2198 Bloomfield Highway, Farmington, NM 87401

4. Location of Well (Footage, Sec., T., R., M., or Survey Description)

990' FSL, 990' FWL, Sec. 27, T27N, R3W, N.M.P.M.

5. Lease Designation and Serial No.

Jic Cont 94

6. If Indian, Allottee or Tribe Name

Jicarilla Apache

7. If Unit or CA, Agreement Designation

8. Well Name and No.

Jicarilla 94 2

9. API Well No.

30-039-06880

10. Field and Pool, or exploratory Area

Blanco Mesaverde

11. County or Parish, State

Rio Arriba NM

12. CHECK APPROPRIATE BOX(s) TO INDICATE NATURE OF NOTICE, REPORT, OR OTHER DATA

TYPE OF SUBMISSION

- ☒ Notice of Intent  
☐ Subsequent Report  
☐ Final Abandonment Notice

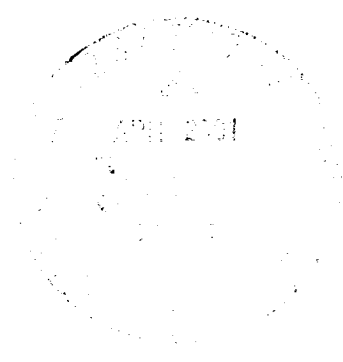
TYPE OF ACTION

- ☒ Abandonment  
☐ Recompletion  
☐ Plugging Back  
☐ Casing Repair  
☐ Altering Casing  
☐ Other \_\_\_\_\_  
☐ Change of Plans  
☐ New Construction  
☐ Non-Routine Fracturing  
☐ Water Shut-Off  
☐ Conversion to Injection  
☐ Dispose Water

(Note: Report results of multiple completion on Well Completion or Recompletion Report and Log form.)

13. Describe Proposed or Completed Operations (Clearly state all pertinent details, and give pertinent dates, including estimated date of starting any proposed work. If well is directionally drilled, give subsurface locations and measured and true vertical depths for all markers and zones pertinent to this work.)\*

Energen Resources Corporation intends to plug and abandon this well per the attached plug and abandonment procedure.



14. I hereby certify that the foregoing is true and correct

Signed [Signature]

Title Drilling & Completion Foreman

Date 3/7/01

(This space for Federal or State office use)

Approved by /s/ Brian W. Davis

Title Lands and Mineral Resources

Date MAR 27 2001

Conditions of approval, if any:

## PLUG & ABANDONMENT PROCEDURE

02/27/01

### Jicarilla 94 #2

Blanco Mesaverde

990' FSL & 990' FWL, Section 27, T-27-N, R-3-W

Rio Arriba Co., New Mexico, API #30-039-06880

Long: / Lat:

Note: All cement volumes use 100% excess outside pipe and 50' excess inside. The stabilizing wellbore fluid will be 8.3 ppg, sufficient to balance all exposed formation pressures. All cement will be ASTM Type II, mixed at 15.6 ppg with a 1.18 cf/sx yield.

1. Install and test rig anchors. Prepare blow pit. Comply with all NMOC, BLM and Energen safety rules and regulations. MOL and RU daylight pulling unit. Blow well down; kill with water if necessary. ND wellhead and NU BOP and stripping head; test BOP.
2. PU on tubing and release Model "R" packer set in 15,000# compression at 5640'. TOH and tally 2-3/8" tubing; LD packer. If necessary LD tubing and PU workstring.
3. **Plug #1 (Mesaverde perforations, 5730' – 5630')**: Set 5-1/2" wireline CIBP or CR at 5730'. TIH with tubing and tag. Load casing with water and circulate the well clean. Pressure test casing to 500#. If casing does not test, then spot or tag subsequent plugs as appropriate. Mix 17 sxs cement and spot a balanced plug inside casing above the CIBP, to isolate the Mesaverde. TOH with tubing.
4. **Plug #2 (Pictured Cliffs, Fruitland, Kirtland and Ojo Alamo tops, 4050' – 3475')**: Perforate 3 HSC squeeze holes at 4050'. Establish rate into squeeze holes if casing tested. Set 5-1/2" retainer at 4000'. Pressure test tubing to 1000#. Establish rate below CR into squeeze holes. Mix 257 sxs cement, squeeze 184 sxs cement outside 5-1/2" casing and leave 73 sxs cement inside casing to cover through the Ojo Alamo top. TOH with tubing.
5. **Plug #3 (Nacimiento top, 1755' – 1655')**: Perforate 3 HSC squeeze holes at 1755'. Establish rate into squeeze holes if casing tested. Set 5-1/2" retainer at 1705'. Establish rate into squeeze holes. Mix 47 sxs Class B cement and squeeze 30 sxs cement outside 5-1/2" casing and leave 17 sxs cement inside casing to cover Nacimiento top. TOH and LD tubing.
6. **Plug #4 (8-5/8" casing shoe, 388' - Surface)**: Perforate 3 HSC squeeze holes at 388'. Establish circulation out bradenhead. Mix and pump approximately 120 Class B cement down 5-1/2" casing, circulate good cement out bradenhead valve. Shut in well and WOC.
7. ND BOP and cut off casing below surface. Install P&A marker with cement to comply with regulations. RD, move off location, cut off anchors and restore location.

# Jicarilla 94 #2

Current

Blanco Mesaverde

SW, Section 27, T-27-N, R-3-W, Rio Arriba County, NM

Long: / Lat:

API #30-039-06880

Today's Date: 02/27/01

Spud: 9/20/56

Completed: 11/7/56

Elevation: 7289'

12-1/4" hole

8-5/8" 29# Casing set @ 338'  
Cmt w/ 180 sxs (Circulated to Surface)

## Well History

**Oct '56: Drilling:** Ran 5-1/2" casing and cemented with 100 sxs, lost circulation; perforated and blocked squeezed with total of 200 sxs; TOC at 5420' by TS.

**Mar '99:** Pull tubing, found plugged with sand and drilling mud; set Baker Model R-3 packer at 5640' with 15,000# compression. Land tubing.

**Apr '99: Swab well:** initial FL at 1500', made 22 runs in 2 days, recovered?

**Jan '00: Swab well:** Initial FL at 1500', swab for 3 days and recovered 191 bbls water, final FL at 2600'.

Nacimiento @ 1705'

Ojo Alamo @ 3525'

Kirtland @ 3720'

Fruitland @ 3830'

Pictured Cliffs @ 4000'

2-3/8" Tubing set at 6303'  
(205 joints, EUE with Packer at 5640')

TOC @ 5420' (T.S.)

**Baker Model R-3 set in  
15,000# Compression at 5640'**

Mesaverde @ 5778'

Mesaverde Perforations:  
5780' - 6326'

PBTD 6330'

7-7/8" hole

5-1/2" 14#/15.5# J-55 Casing set @ 6365'  
Cemented with 300 sxs

TD 6365'

# Jicarilla 94 #2

## Proposed P&A

Blanco Mesaverde

SW, Section 27, T-27-N, R-3-W, Rio Arriba County, NM

Long: / Lat:

API #30-039-06880

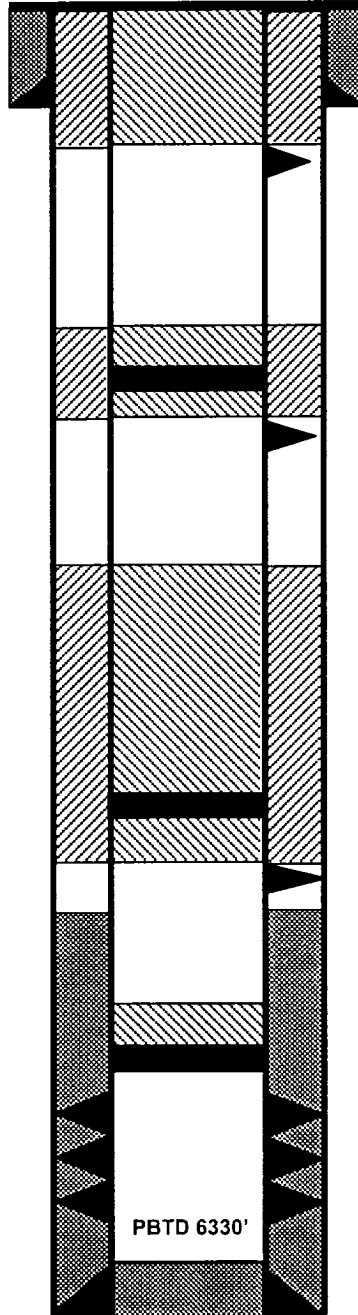
Today's Date: 02/27/01

Spud: 9/20/56

Completed: 11/7/56

Elevation: 7289'

12-1/4" hole



8-5/8" 29# Casing set @ 338'  
Cmt w/ 180 sxs (Circulated to Surface)

Perforate @ 388'

**Plug #4 388' - Surface**  
Cement with 120 sxs

Nacimiento @ 1705'

Cement Rt @ 1705'

Perforate @ 1755'

**Plug #3 1755' - 1655'**  
Cement with 47 sxs,  
30 sxs outside casing  
and 17 sxs inside.

Ojo Alamo @ 3525'

Kirtland @ 3720'

Fruitland @ 3830'

Pictured Cliffs @ 4000'

Cement Rt @ 4000'

Perforate @ 4050'

TOC @ 5420' (T.S.)

**Plug #2 4050' - 3370'**  
Cement with 257 sxs,  
184 sxs outside casing  
and 73 sxs inside.

Mesaverde @ 5778'

Set CIBP @ 5730'

Mesaverde Perforations:  
5780' - 6326'

**Plug #1 5730' - 5630'**  
Cement with 17 sxs

PBTD 6330'

7-7/8" hole

TD 6365'

5-1/2" 14#/15.5# J-55 Casing set @ 6365'  
Cemented with 300 sxs

## BLM CONDITIONS OF APPROVAL

The following surface rehabilitation Conditions of Approval must be complied with as applicable, before this well can be approved for final abandonment (see 43 CFR 3162.3-4). Surface rehabilitation work shall be completed within one year of the actual plugging date. Notification for completion of this work can be submitted with a Sundry Notice. Questions? Call Pat Hester at (505) 761-8786.

1. All fences, production equipment, purchaser's equipment, concrete slabs, deadman (anchors), flowlines, risers, debris and trash must be removed from the location. Non-retrieved flowlines and pipelines will be abandoned in accordance with State Rule 714. Information supporting the non-retrieval will be included in the subsequent report or final abandonment Sundry Notice.

2. Production pits will be closed according to the Unlined Surface Impoundment Closure Guidelines, as approved in the Environmental Assessment of December 1993. Any oil stained soils can be remediated on-site according to these guidelines or disposed of in an approved facility.

3. The well pad will be shaped to the natural terrain and left as rough as possible. All compacted areas and areas devoid of vegetation shall be ripped to a minimum of 12" in depth before reseeding.

4. Access roads will be shaped to conform to the natural terrain and left as rough as possible to deter vehicle travel. Access will be ripped to a minimum of 12" in depth, water barred and reseeded. All erosion problems created by the development must be corrected prior to acceptance of release. Water bars should be spaced as shown below along the fall line of the slope:

% Slope	Spacing Interval
Less than 20%	200'
2 to 5 %	150'
6 to 9 %	100'
10 to 15 %	50'
Greater than 15%	30'

5. All disturbed areas will be seeded with the prescribed certified seed mix (reseeding may be required). Seed mix must be certified weed free to avoid the introduction of noxious weeds. Refer to the original APD for seed mix.

6. Notify Surface Managing Agency seven (7) days prior to seeding so that they may be present to witness.

7. The period of liability under the bond of record will not be terminated until the well is inspected and the surface rehabilitation approved.

Other Surface Managing Agencies (SMA's) may vary slightly in their restoration requirements. It is your responsibility, as the operator, to obtain surface restoration requirements from other SMA's. We need to be provided with a copy of these requirements. Any problems concerning stipulations received from other SMA's should be brought to us.

On private land, a letter from the fee owner stating that the surface restoration is satisfactory will be provided to the office. Questions? Call Pat Hester at (505) 761-8786.