

UNITED STATES
DEPARTMENT OF THE INTERIOR
GEOLOGICAL SURVEY

30-039-21286

APPLICATION FOR PERMIT TO DRILL, DEEPEN, OR PLUG BACK

1a. TYPE OF WORK

DRILL ☒DEEPEN ☐PLUG BACK ☐

b. TYPE OF WELL

OIL
WELL ☐GAS
WELL ☒

OTHER

SINGLE
ZONE ☒MULTIPLE
ZONE ☐

2. NAME OF OPERATOR

Mobil Oil Corporation

3. ADDRESS OF OPERATOR

3 Greenway Plaza East, Suite 800, Houston, Texas 77046

4. LOCATION OF WELL (Report location clearly and in accordance with any State requirements.)*

At surface

C 990' FNL & 1658' FNL, Sec. 23, T27N, R3W

At proposed prod. zone

Same as surface

14. DISTANCE IN MILES AND DIRECTION FROM NEAREST TOWN OR POST OFFICE*

15. DISTANCE FROM PROPOSED*

LOCATION TO NEAREST
PROPERTY OR LEASE LINE, FT.
(Also to nearest drilg. unit line, if any)

990'

16. NO. OF ACRES IN LEASE

2560

17. NO. OF ACRES ASSIGNED
TO THIS WELL

320 (2 wells) ✓

18. DISTANCE FROM PROPOSED LOCATION*
TO NEAREST WELL, DRILLING, COMPLETED,
OR APPLIED FOR, ON THIS LEASE, FT.

19. PROPOSED DEPTH

6250'

20. ROTARY OR CABLE TOOLS

Rotary

21. ELEVATIONS (Show whether DF, RT, GR, etc.)

7203 - Ground

22. APPROX. DATE WORK WILL START*

As soon as possible

23.

PROPOSED CASING AND CEMENTING PROGRAM

SIZE OF HOLE	SIZE OF CASING	WEIGHT PER FOOT	SETTING DEPTH	QUANTITY OF CEMENT
12-1/4"	8-5/8"	20#-Misco	0-300'	(1) Circulate to surface
7-7/8"	4-1/2"	9.5#-K-55	0-6250'	(2) Circulate to surface

CEMENTING PROGRAM

- (1) Class B cement containing 2% CaCl₂
- (2) Circulate in two stages using light weight filler cement in the lead slurry of each stage and tail in with neat cement to cover pay zone.

MUD PROGRAM

Depth	Type of Mud	Weight	Viscosity	Water Loss
0-300'	Spud			
300-6250'	Fresh Water Gell	8.8-9.2	30-50	10 C.C.

BLOWOUT PREVENTER PROGRAM ATTACHED

Gas is dedicated

IN ABOVE SPACE DESCRIBE PROPOSED PROGRAM: If proposal is to deepen or plug back, give data on present productive zone and proposed new productive zone. If proposal is to drill or deepen directionally, give pertinent data on subsurface locations and measured and true vertical depths. Give blowout preventer program, if any.

24.

SIGNED A.D. Bond A.D. BondTITLE Regulatory Engineering CoordinatorDATE 8-31-76

(This space for Federal or State office use)

PERMIT NO. _____

APPROVAL DATE _____

APPROVED BY _____

TITLE _____

DATE _____

CONDITIONS OF APPROVAL, IF ANY:

OK

*See Instructions On Reverse Side

NEW MEXICO OIL CONSERVATION COMMISSION
WELL LOCATION AND ACREAGE DEDICATION PLAT

Form C-102
Supersedes C-128
Effective 1-1-65

All distances must be from the outer boundaries of the Section.

Operator Mobil Oil Corporation			Lease Jicarilla "F"		Well No. 5A
Unit Letter C	Section 23	Township 27N	Range 3W	County Rio Arriba	
Actual Footage Location of Well: 990 feet from the North line and 1658 feet from the West line					
Ground Level Elev. 7203	Producing Formation Mesaverde		Pool Blanco Mesaverde	Dedicated Acreage 320 Acres	

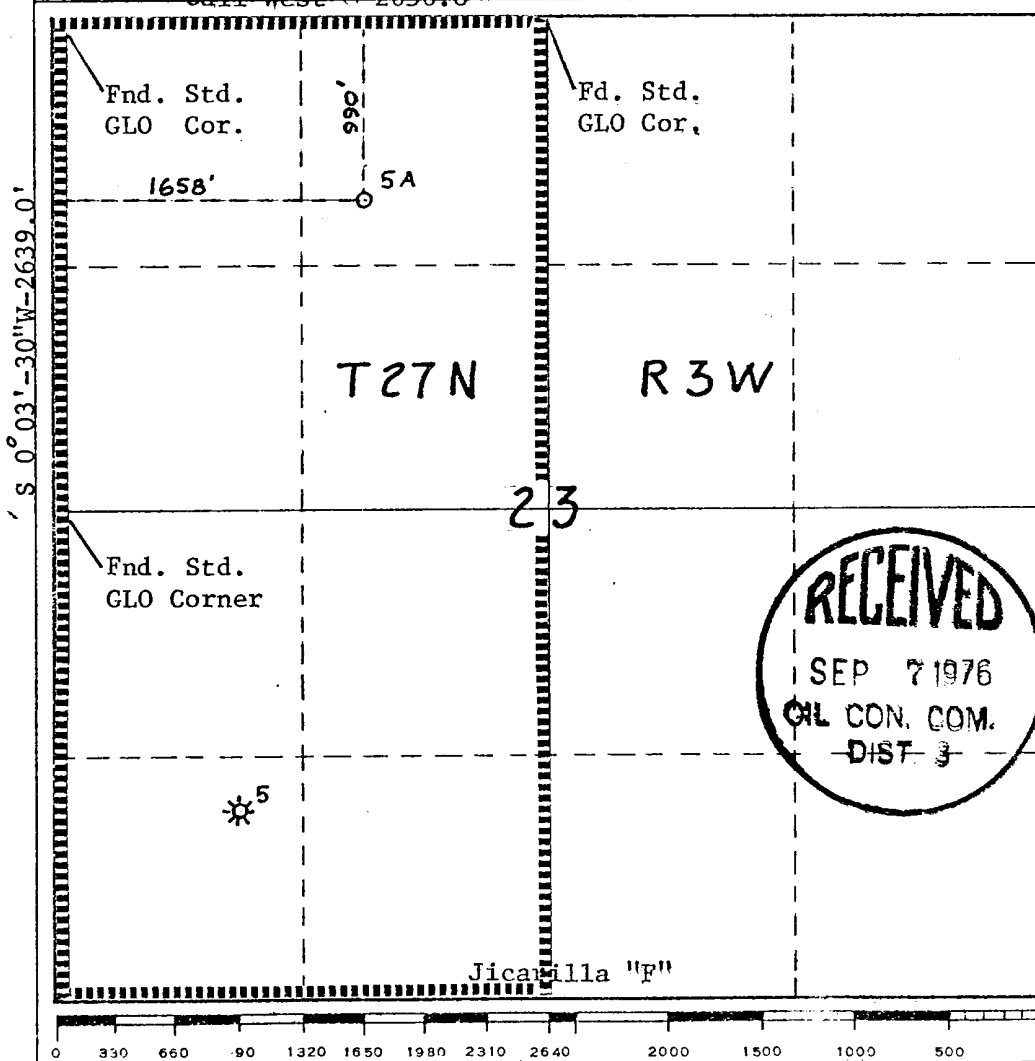
1. Outline the acreage dedicated to the subject well by colored pencil or hachure marks on the plat below.
2. If more than one lease is dedicated to the well, outline each and identify the ownership thereof (both as to working interest and royalty).
3. If more than one lease of different ownership is dedicated to the well, have the interests of all owners been consolidated by communitization, unitization, force-pooling, etc?

☐ Yes ☐ No If answer is "yes," type of consolidation _____

If answer is "no," list the owners and tract descriptions which have actually been consolidated. (Use reverse side of this form if necessary.) _____

No allowable will be assigned to the well until all interests have been consolidated (by communitization, unitization, forced-pooling, or otherwise) or until a non-standard unit, eliminating such interests, has been approved by the Commission.

Call West - 2656.8'



CERTIFICATION

I hereby certify that the information contained herein is true and complete to the best of my knowledge and belief.

W. B. Simmons, Jr.

Name

W. B. Simmons, Jr.

Position

Engineering Specialist

Company

Mobil Oil Corporation

Date

August 27, 1976

I hereby certify that the well location shown on this plat was plotted from field notes of actual surveys made by me or under my supervision, and that the same is true and correct to the best of my knowledge and belief.

J. F. Godfrey, Jr.

Date Surveyed

July 22, 1976

Registered Professional Engineer and/or Land Surveyor

J. F. Godfrey, Jr.

Certificate No.

2663

PROPOSED CHOKE MANIFOLD
(MINIMUM REQUIREMENTS)
8-5/8" CASING STRING

2" Adjustable Choke

To Separator

3,000 psi gage

2" Cross

To Blue Line

o Valve on
rilling Spool

All Valves- " - 2,000 psi WP

2" Positive Choke

To Separator

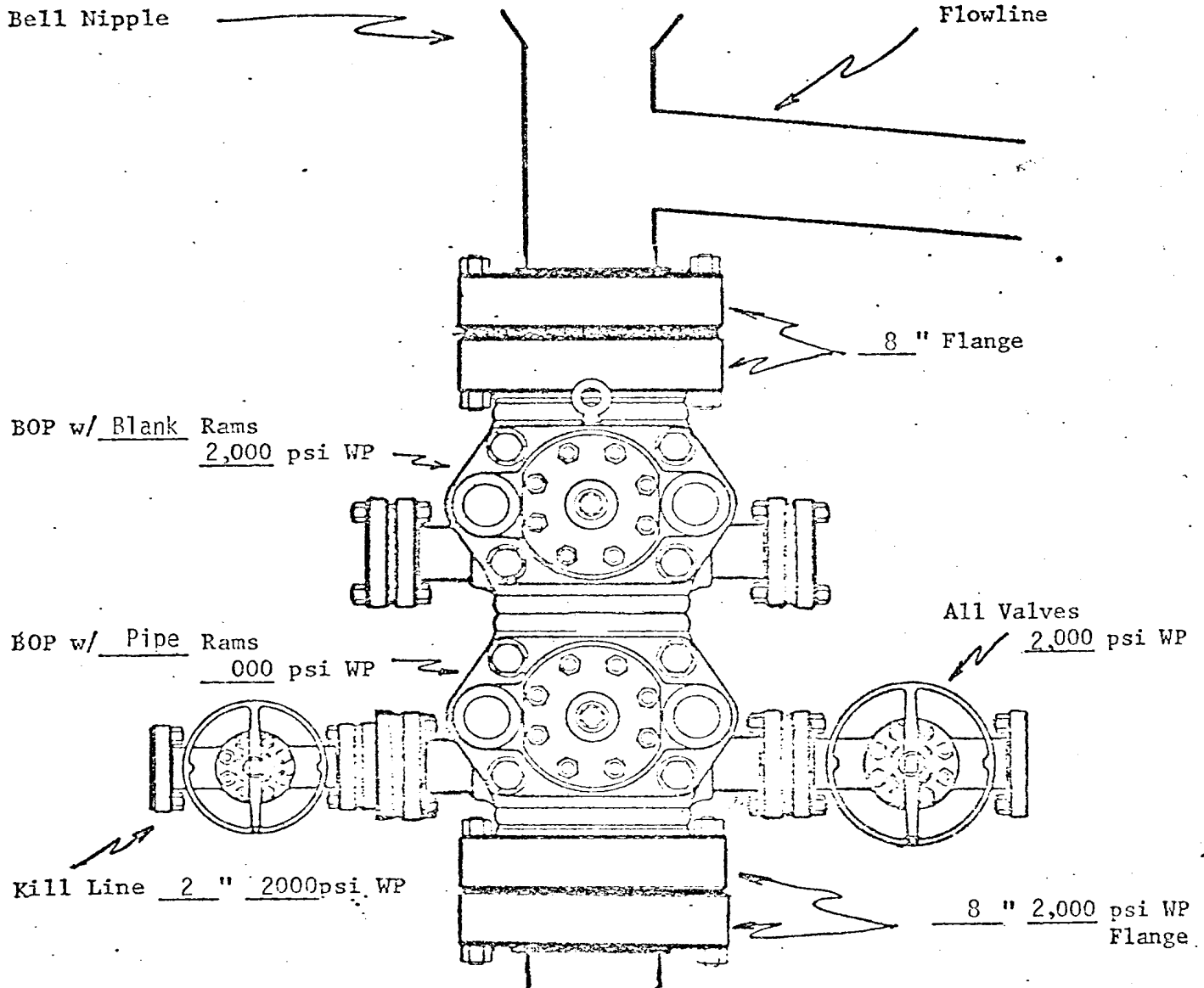
MOBIL OIL CORP.

WELL NAME & NO.

Jicarilla "F" #5A

Rio Arriba COUNTY, N.M.

PROPOSED BOP STACK
8-5/8 " CASING



MOBIL OIL CORPORATION
WELL Jicarilla "F" #5A
Rio Arriba COUNTY,
New Mexico

MOBIL OIL CORPORATION
P. O. Box 633
Midland, Texas 79701

MULTI -POINT SURFACE USE PLAN FOR
DRILLING OPERATIONS ON FEDERAL LEASES

Lease Name: Jicarilla "F" Well No. 5-A
Well Location: 1658' FWL & 990' FNL, Sec. 23, T27N, R3W
Field: Blanco Mesa Verde
County: Rio Arriba State: New Mexico

1. * Existing roads including location of the exit from the main highway.
2. * Planned access roads.
3. * Location of wells.
4. * Lateral roads to well location.
5. * Location of tank batteries and flow lines.
6. Location and types of water supply: Water will be trucked to well site.
7. Methods for handling waste disposal: Waste will be burned, buried and/or hauled from the well site.
8. Location of camps: None
9. Location of air strips: None
10. Location layout to include position or rig, mud tanks, reserve pits, burn pits, pipe racks, etc.: (See attached diagram of proposed rig layout)
11. Plans for restoration of the surface: Pits will be backfilled and levelled to original grade and left for return of natural vegetation. The pad will be left in place for well servicing.
12. Any other information that may be used in evaluating the impact on environment: Location falls on the east slope of sage brush and oak brush hillside.

Approximate Formation Tons (Ft.)

Ojo Alamo	- 3280	Mesa Verde	- 5700
Kirkland-Fruitland	- 3400	Mancos	- 6200
Picture Cliff	- 3716		
Lewis	- 3950		

* Shown on attached map.

I hereby certify that I, or persons under my direct supervision, have inspected the proposed drillsite and access route; that I am familiar with the conditions which presently exist; that the statements made in this plan are, to the best of my knowledge, true and correct; and, that the work associated with the operations proposed herein will be performed by Mobil Oil Corporation and its contractors and sub-contractors in conformity with this plan and the terms and conditions under which it is approved.

8-27-76
Date

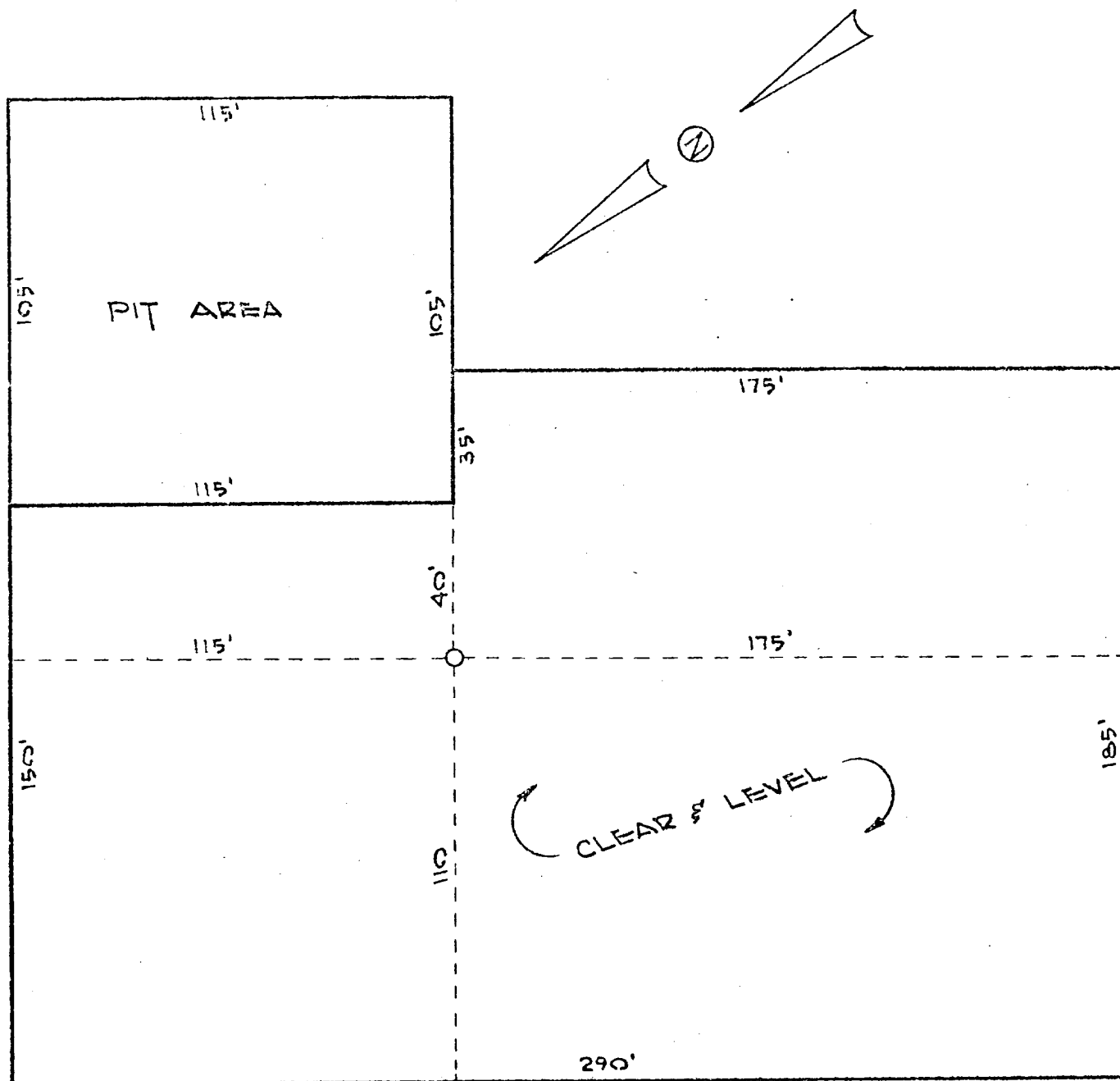
Glen W. Barb
Name and Title

Glen W. Barb

Oper. Supt.-West

THIS DRAWING AND ALL INFORMATION THEREON
IS THE PROPERTY OF MOBIL OIL CORPORATION AND
SHALL NOT BE COPIED OR USED EXCEPT FOR THE

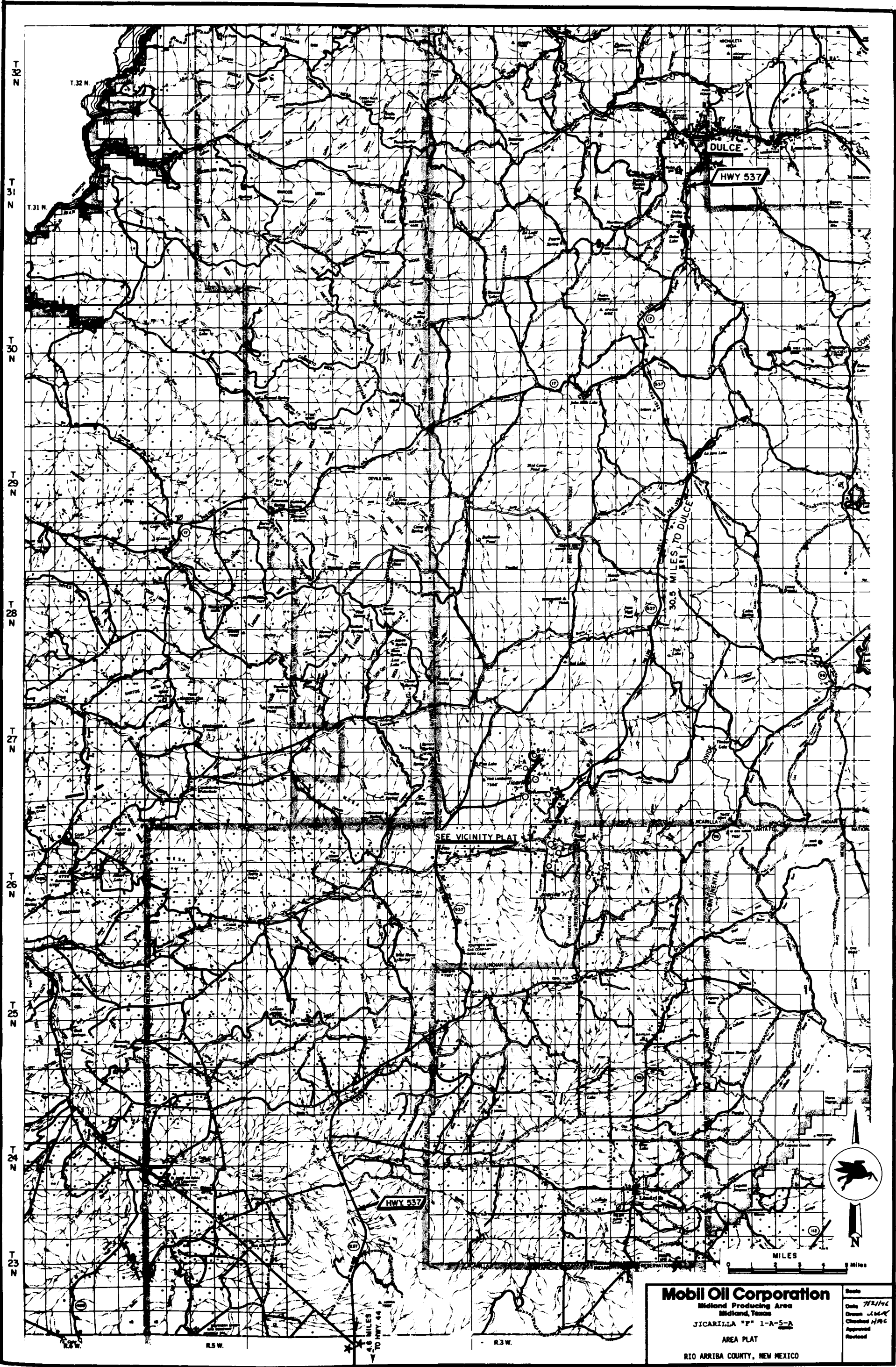
PURPOSE FOR WHICH IT IS EXPRESSLY FURNISHED.
THE DRAWING AND ANY COPIES THEREON (PARTIAL
OR COMPLETE) SHALL BE RETURNED TO THE OWNER
ON DEMAND.



JICARILLA "F" WELL #5-A
990' FNL & 1658' FWL
SEC. 23, T27N R3W

VEE-DOOR SOUTHWESTERLY

NO.	DATE	BY
JICARILLA MESA VERDE STANDARD LOCATION PLAN RIO ARRIBA NEW MEXICO		
Mobil Oil Corporation Houston E & P Division		
DRAWN J.W.G.	CHECKED H.S.	SCALE 1"=10'
DWG. NO.		A-481-CE



Mobil Oil Corporation
Midland Producing Area
Midland, Texas
JICARILLA "F" 1-A-5-A
AREA PLAT
RIO ARRIBA COUNTY, NEW MEXICO

Scale
Date 7/2/46
Drawn J. L. H. C.
Checked H. A. C.
Approved
Revised

