

UNITED STATES  
DEPARTMENT OF THE INTERIOR  
GEOLOGICAL SURVEY

## APPLICATION FOR PERMIT TO DRILL, DEEPEN, OR PLUG BACK

## 1a. TYPE OF WORK

DRILL ☒DEEPEN ☐PLUG BACK ☐

## b. TYPE OF WELL

OIL  
WELL ☐GAS  
WELL ☒OTHER ☐SINGLE  
ZONE ☒MULTIPLE  
ZONE ☐

## 2. NAME OF OPERATOR

Mobil Oil Corporation

## 3. ADDRESS OF OPERATOR

3 Greenway Plaza East, Suite 800, Houston, Texas 77046

## 4. LOCATION OF WELL (Report location clearly and in accordance with any State requirements.\*)

At surface

990' FNL &amp; 1652' FWL, Sec. 22, T27N, R3W

At proposed prod. zone

Same as surface

## 14. DISTANCE IN MILES AND DIRECTION FROM NEAREST TOWN OR POST OFFICE\*

## 15. DISTANCE FROM PROPOSED\*

LOCATION TO NEAREST  
PROPERTY OR LEASE LINE, FT.  
(Also to nearest drlg. unit line, if any) 990'

## 16. NO. OF ACRES IN LEASE

2560

## 17. NO. OF ACRES ASSIGNED

TO THIS WELL  
320 (2 wells)18. DISTANCE FROM PROPOSED LOCATION\*  
TO NEAREST WELL, DRILLING, COMPLETED,  
OR APPLIED FOR, ON THIS LEASE, FT. 1983'

## 19. PROPOSED DEPTH

6350'

## 20. ROTARY OR CABLE TOOLS

Rotary

## 21. ELEVATIONS (Show whether DF, RT, GR, etc.)

7057' - Ground

## 22. APPROX. DATE WORK WILL START\*

as soon as possible

## 23.

## PROPOSED CASING AND CEMENTING PROGRAM

SIZE OF HOLE	SIZE OF CASING	WEIGHT PER FOOT	SETTING DEPTH	QUANTITY OF CEMENT
12 1/4"	8 5/8"	20# - Misco	0 - 300'	(1) Circulate to surface
7 7/8"	4 1/2"	9.5# - K-55	0 - 6350'	(2) Circulate to surface

## CEMENTING PROGRAM

- (1) Class C cement with 2% CaCl<sub>2</sub>
- (2) Cement in 2 stages using lite weight filler cement in the upper stage.  
In the lower stage a lite weight cement will be used tailed in with  
250 SX neat.

## MUD PROGRAM

DEPTH	TYPE OF MUD	WEIGHT	VISCOSITY	WATER LOSS
0' - 300'	SPUD	8.8		
300' - 6350'	Fresh Water Gel	8.8 - 9.1	30 - 50	10 c. c.

## BLOWOUT PREVENTER PROGRAM ATTACHED

*Gas Is Dedicated*

IN ABOVE SPACE DESCRIBE PROPOSED PROGRAM: If proposal is to deepen or plug back, give data on present productive zone and proposed new productive zone. If proposal is to drill or deepen directionally, give pertinent data on subsurface locations and measured and true vertical depths. Give blowout preventer program, if any.

## 24.

SIGNED

*A. D. Bond*

A. D. Bond

TITLE Regulatory Engineering Coord.

DATE July 25, 1977

(This space for Federal or State office use)

PERMIT NO.

APPROVAL DATE

APPROVED BY

TITLE

CONDITIONS OF APPROVAL, IF ANY:

*Chaf*

\*See Instructions On Reverse Side

NEW MEXICO OIL CONSERVATION COMMISSION  
WELL LOCATION AND ACREAGE DEDICATION PLAT

Form C-102  
Supersedes C-120  
Effective 1-1-65

All distances must be from the outer boundaries of the Section

Operator <b>Mobil Oil Corporation</b>			Lease <b>Jicarilla "E"</b>		Well No. <b>3 - A</b>
Unit Letter <b>C</b>	Section <b>22</b>	Township <b>27N</b>	Range <b>3W</b>	County <b>Rio Arriba</b>	
Actual Surface Location of Well: <b>990</b> feet from the <b>North</b> line and <b>1652</b> feet from the <b>West</b> line					
Ground Level Elev. <b>7057'</b>	Producing Formation <b>Mesaverde</b>		Pool <b>Blanco Mesaverde</b>		Dedicated Acreage: <b>320 (2 wells) Acres</b>

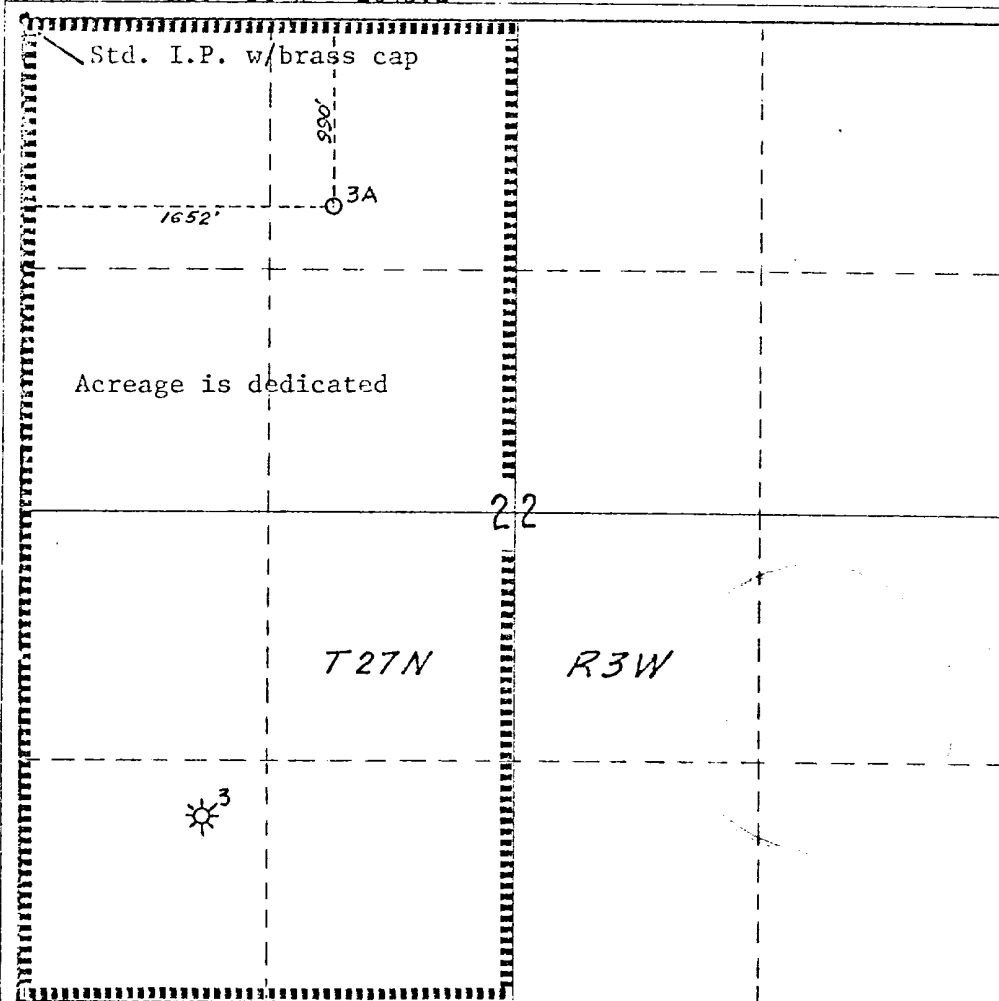
1. Outline the acreage dedicated to the subject well by colored pencil or hachure marks on the plat below.
2. If more than one lease is dedicated to the well, outline each and identify the ownership thereof (both as to working interest and royalty).
3. If more than one lease of different ownership is dedicated to the well, have the interests of all owners been consolidated by communitization, unitization, force-pooling, etc?

☐ Yes ☐ No If answer is "yes," type of consolidation \_\_\_\_\_

If answer is "no," list the owners and tract descriptions which have actually been consolidated. (Use reverse side of this form if necessary.) \_\_\_\_\_

No allowable will be assigned to the well until all interests have been consolidated (by communitization, unitization, forced-pooling, or otherwise) or until a non-standard unit, eliminating such interests, has been approved by the Commission.

**N89° 50'W - 2643.2'**



CERTIFICATION

I hereby certify that the information contained herein is true and complete to the best of my knowledge and belief.

*A. D. Bond*

Name

**A. D. Bond**

Position

**Regulatory Engr. Coord.**

Company

**Mobil Oil Corp.**

Date

**July 25, 1977**

I hereby certify that the well location shown on this plat was plotted from field notes of actual surveys made by me or under my supervision and that the same is true and correct to the best of my knowledge and belief.

*H. A. Carson, Jr.*

Date Surveyed

**June 25, 1977**

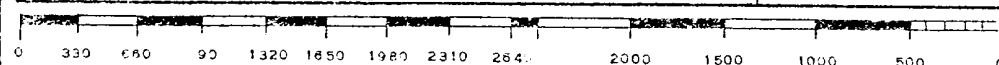
Registered Professional Engineer  
and/or Land Surveyor

**H. A. Carson, Jr.**

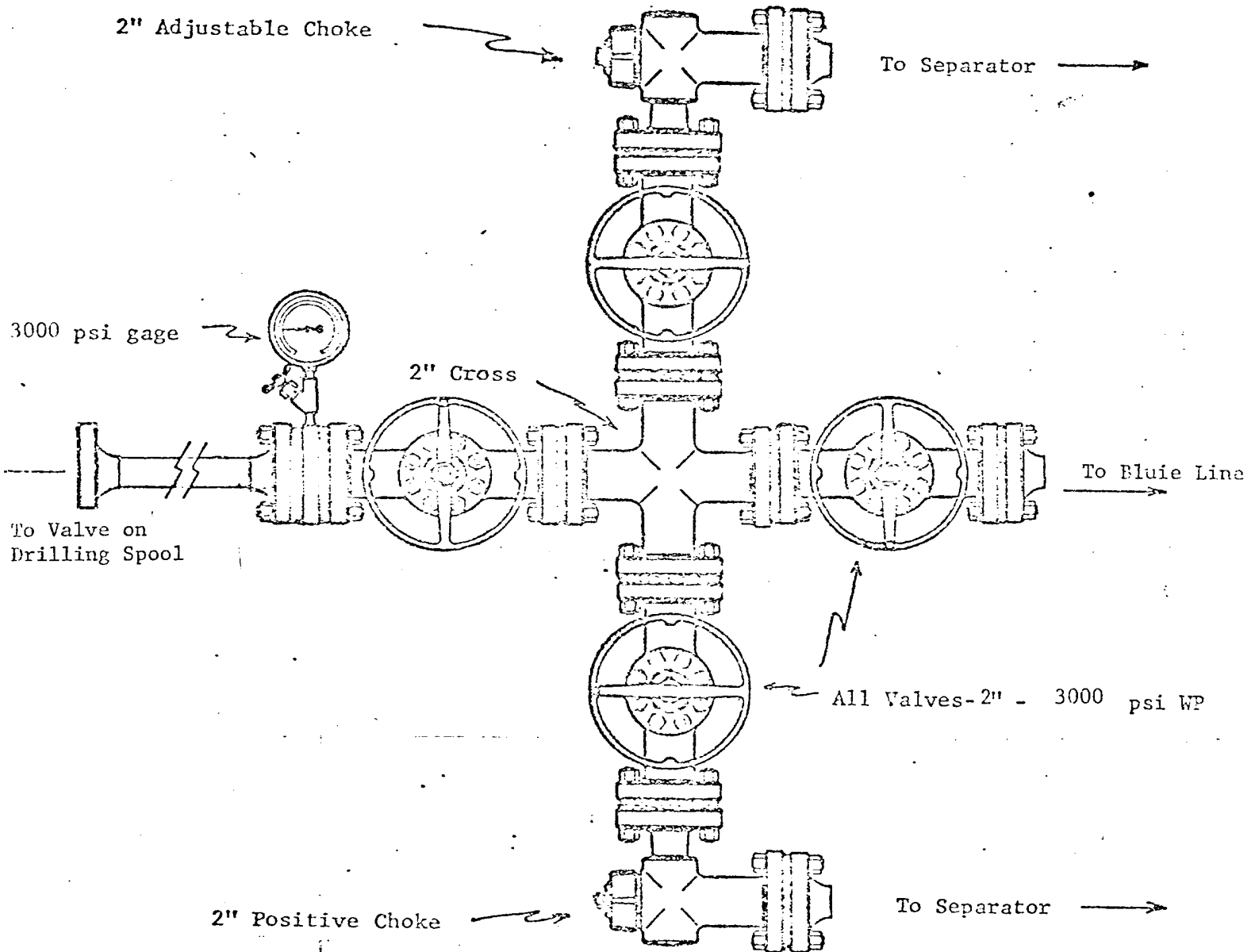
Certificate No.

**5063**

S0° 03'W - 2640.9'

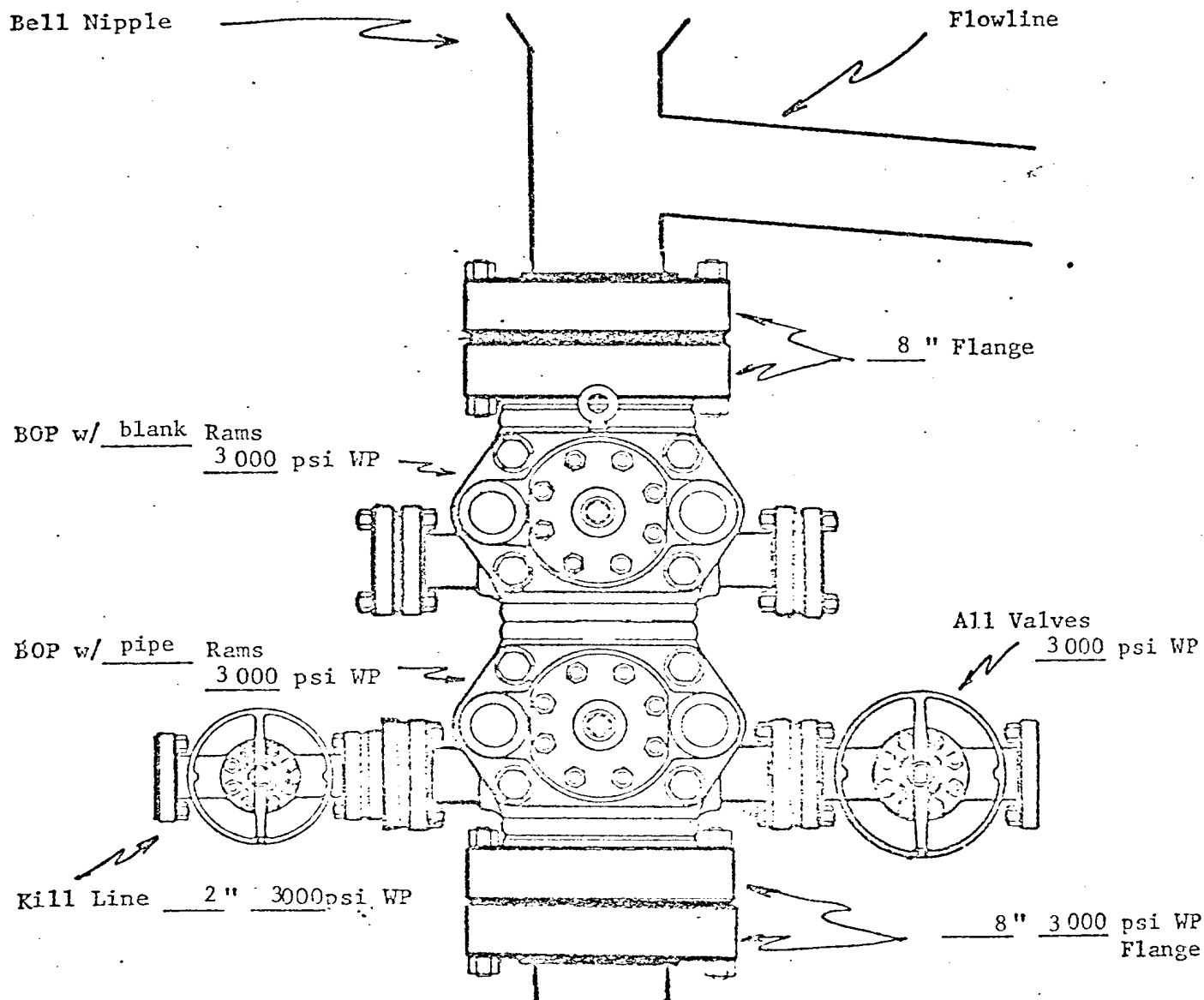


PROPOSED CHOKE MANIFOLD  
(MINIMUM REQUIREMENTS)  
8 5/8" CASING STRING



MOBIL OIL CORP.  
WELL NAME & NO. Jicarilla "F"  
Well # 3A  
Rio Arriba COUNTY, New Mex.

PROPOSED BOP STACK  
8 5/8 " CASING



MOBIL OIL CORPORATION  
 WELL Jicarilla "F", Well #3A  
 Rio Arriba COUNTY,  
 New Mexico

MOBIL OIL CORPORATION

SURFACE USE PLAN  
JICARILLA "F" WELL 3A  
990' FNL 1652' FWL  
SECTION 22 T-27N R-3W

NEW MEXICO PRINCIPLE MERIDIAN

RIO ARriba COUNTY, NEW MEXICO

1. EXISTING ROADS (See attached vicinity map)

An existing graded road will be utilized to reach the location. This road leaves State Highway No. 537 at a point about 32 miles south of Dulce, New Mexico and goes north about 1.9 mile to the location.

2. PLANNED ACCESS ROADS (See attached vicinity map)

The proposed access road will be 12 feet wide and 120 feet long.

3. LOCATION OF EXISTING WELLS

For location of existing wells see attached vicinity map.

4. LOCATION OF PRODUCTION FACILITIES

All production facilities will be located on the well pad.

5. WATER SUPPLY

Water will be trucked to the site for drilling purposes and will come from existing water supply wells as follows:

1. Water supply Well No. H-1 in the NE/4 of SW/4 of Section 2, T-26N, R-3W.
2. Water supply Well No. C-1 in the NE/4 of NE/4 of Section 8, T-26N, R-3W.
3. Water supply Well No. 3 in the SE/4 of SE/4 of Section 4, T-26N, R-3W.

Existing roads will be used for hauling water from the supply wells to the proposed wells.

6. SOURCE OF CONSTRUCTION MATERIALS

No construction materials will be used.

7. METHODS OF HANDLING WASTE DISPOSAL

All garbage and trash will be burned, buried and or hauled from well site.

8. ANCILLARY FACILITIES

No ancillary facilities are planned at this time.

9. WELL SITE LAYOUT

See attached Plat "B".

10. PLANS FOR RESTORATION OF SURFACE

Pits will be backfilled and levelled to original grade and left for return of natural vegetation. The pad will be left in place for well servicing.

11. OTHER INFORMATION

The location site is located on the west slope of hill, near bottom and has a general slope of 6%. Location falls in sage brush and grass. The surface is owned by the Jicarilla Apache Tribe and is utilized for grazing sheep, goats and cattle.

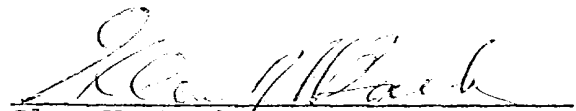
12. LESSEE'S OR OPERATORS REPRESENTATIVE

Glen W. Barb  
Mobil Oil Corporation  
P. O. Box 633  
Midland, TX 79702

Telephone 915-684-8211

13. CERTIFICATION

I hereby certify that I, or persons under my direct supervision, have inspected the proposed drillsite and access route; that the statements made in this plan are, to the best of my knowledge, true and correct; and that the work associated with the operations proposed herein will be performed by a reliable contractor in conformity with this plan and the terms and conditions under which it is approved.

  
Glen W. Barb  
Operations Superintendent

HACarsonjr/tb

T 32 N

T 31 N

T 30 N

T 29 N

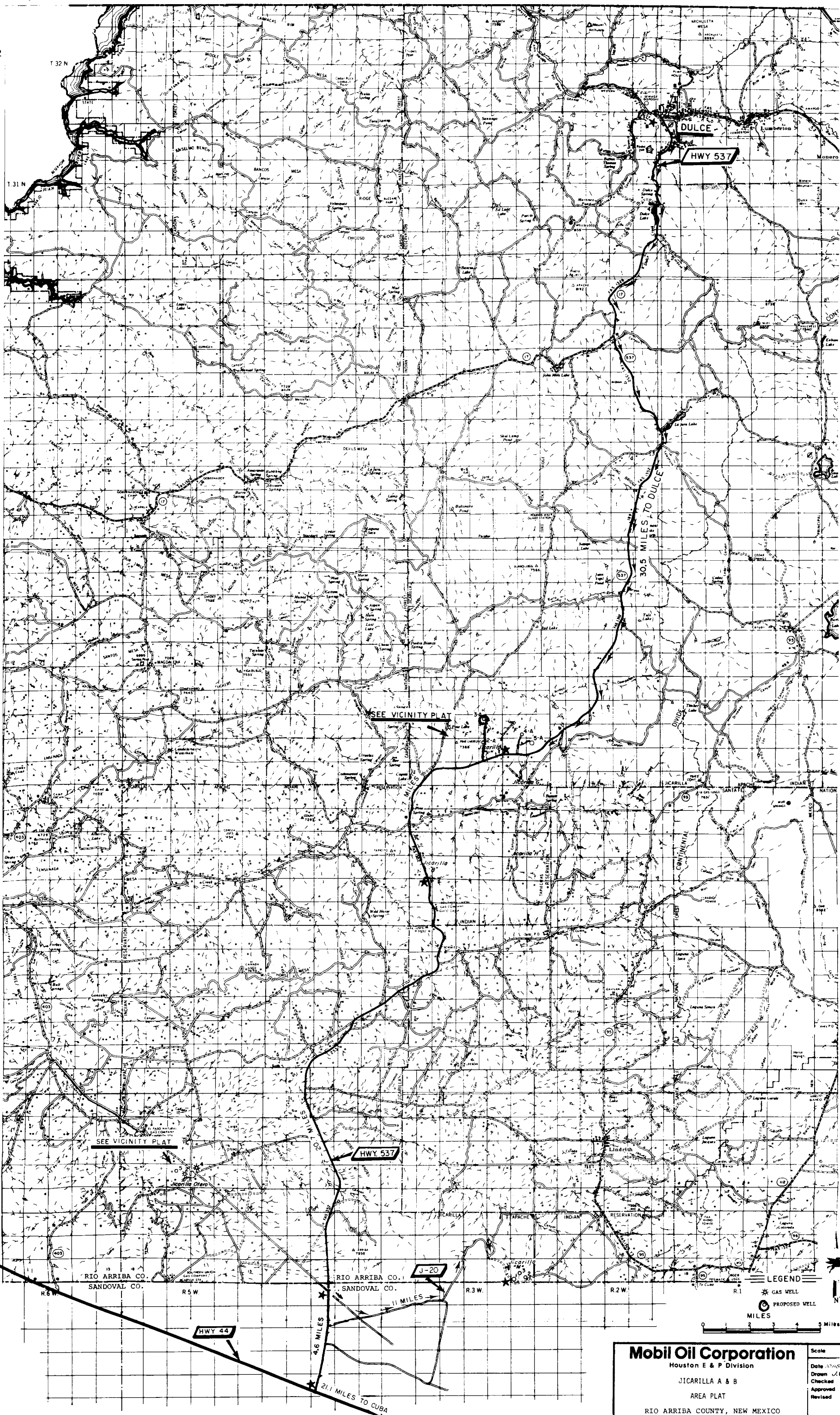
T 28 N

T 27 N

T 26 N

T 25 N

T 24 N



RIO ARRIBA CO.  
SANDOVAL CO.

RIO ARRIBA CO.  
SANDOVAL CO.

LEGEND

GAS WELL  
PROPOSED WELL

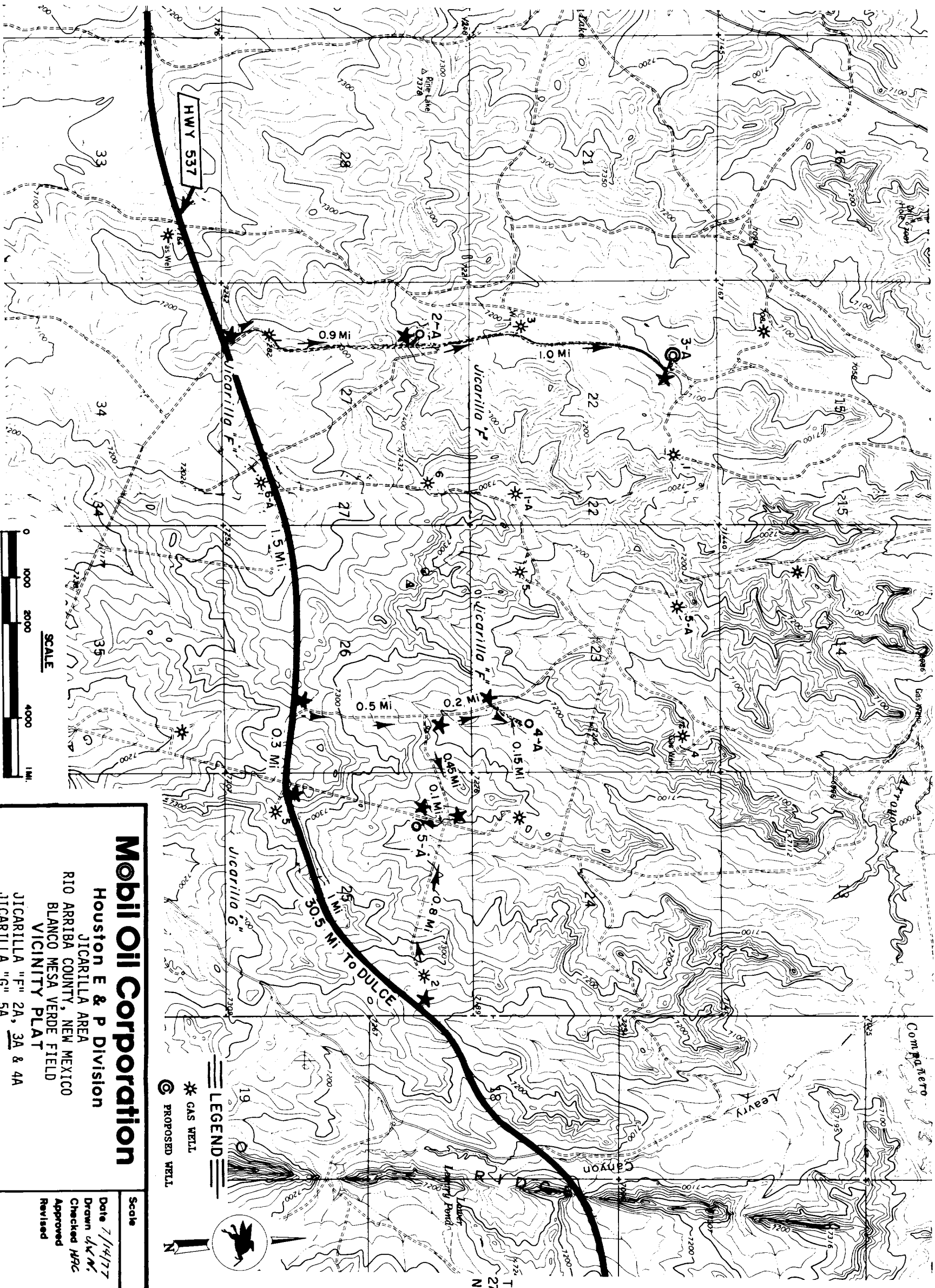
MILES  
0 1 2 3 4 5 Miles

**Mobil Oil Corporation**  
Houston E & P Division

JICARILLA A & B  
AREA PLAT

RIO ARRIBA COUNTY, NEW MEXICO

Scale  
Date 10/25/76  
Drawn [initials]  
Checked [initials]  
Approved [initials]  
Revised [initials]



**Mobil Oil Corporation**

Houston E & P Division

JICARILLA AREA

RIO ARRIBA COUNTY, NEW MEXICO

BLANCO MESA VERDE FIELD

VICINITY PLAT

JICARILLA "F" 2A, 3A & 4A

JICARILLA "G" 5A

Scale

Date 7/14/77

Drawn JWN

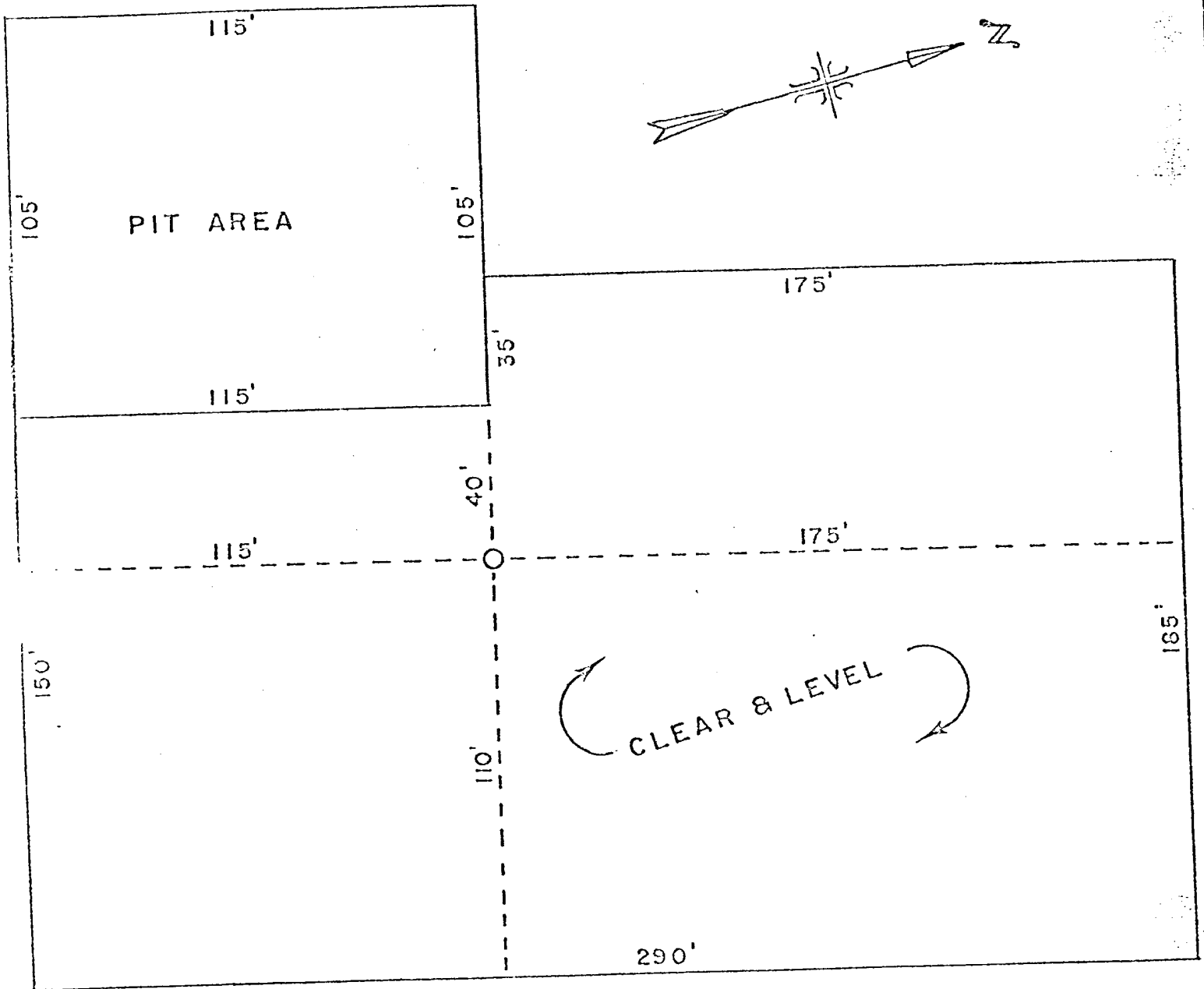
Checked HRC

Approved

Revised

THIS DRAWING AND ALL INFORMATION THEREON  
IS THE PROPERTY OF MOBIL OIL CORPORATION AND  
SHALL NOT BE COPIED OR USED EXCEPT FOR THE

PURPOSE FOR WHICH IT IS EXPRESSLY FURNISHED.  
THE DRAWING AND ANY COPIES THEREON ( PARTIAL  
OR COMPLETE ) SHALL BE RETURNED TO THE OWNER  
ON DEMAND.



JICARILLA "F" 3A  
990' FNL 1652' FWL  
SEC 22, T-27-N R-3-W  
RIO ARriba COUNTY, NEW MEXICO

"B"

NO.	DATE	BY

JICARILLA MESA VERDE  
STANDARD LOCATION PLAN

Mobil Oil Corporation  
Houston E & P Division

DRAWN BY

DWG. NO.

MOBIL OIL CORPORATION'S  
JICARILLA "F" LEASE, WELL #3A  
BLANCO MESAVERDE POOL  
RIO ARriba COUNTY, NEW MEXICO

Ten Point Well Control & Resources Protection Data

1. Geological name of surface formation: San Jose
2. Estimated tops of important geological formations:  

Ojo Alamo	- 2600'
Pictured Cliffs	- 3620'
Lewis Shale	- 4100'
Mesaverde	- 5700'
3. Estimated depths at which water, oil, gas and other mineral are expected to be encountered:  

Ojo Alamo	- 1720'	- Water
Pictured Cliffs	- 3620'	- Oil & Gas
Mesaverde	- 5700'	- Oil & Gas
4. New pipe will be used to drill this well as outlined in the drilling application.
5. Diagrammatic sketches of the blowout preventer system planned for this well are attached to the Form 9-331C.
6. The mud program, giving the type and characteristics of the drilling mud proposed is attached to the Form 9-331C. A sufficient quantity of mud and chemicals will be maintained at the well site to meet anticipated normal conditions, recognizing the time required to replenish supplies from local sources.
7. The auxiliary equipment to be used will include: (1) Kelly cock; and (2) a sub with a full opening valve. We do not believe there will be need for a float at the bit on this unit.
8. Logging, coring & testing program:

<u>Log</u>	<u>Depth</u>
GR-LL-Acoustic	Surface casing to total depth
GR-Neutron-Collar	Surface casing to total depth

No coring will be done and only the Masaverde will be tested.

9. No abnormal pressures, temperatures or hazardous gases are expected to be encountered; however, prudent drilling operations will be maintained to guard against such possibilities.
10. It is anticipated that all necessary approvals will be obtained in order that drilling operations can commence by August 15, 1977. The duration of operations should not exceed 20 days.