

UNITED STATES
DEPARTMENT OF THE INTERIOR
GEOLOGICAL SURVEYSUBMIT IN TRIPLICATE*
(Other instructions on
reverse side)Form approved.
Budget Bureau No. 42-R1425.

30-031-2280 1

APPLICATION FOR PERMIT TO DRILL, DEEPEN, OR PLUG BACK

1a. TYPE OF WORK

DRILL ☒DEEPEN ☐PLUG BACK ☐

b. TYPE OF WELL

OIL
WELL ☐GAS
WELL ☒

OTHER

SINGLE
ZONE ☒MULTIPLE
ZONE ☐

2. NAME OF OPERATOR

El Paso Natural Gas Company

3. ADDRESS OF OPERATOR

PO Box 289, Farmington, NM 87401

4. LOCATION OF WELL (Report location clearly and in accordance with any State requirements.)

At surface

1815'S, 400'E

At proposed prod. zone

same

14. DISTANCE IN MILES AND DIRECTION FROM NEAREST TOWN OR POST OFFICE*

10 miles southeast of Gobernador, NM

15. DISTANCE FROM PROPOSED*

LOCATION TO NEAREST

PROPERTY OR LEASE LINE, FT.

(Also to nearest drilg. unit line, if any)

1815'

18. DISTANCE FROM PROPOSED LOCATION*

TO NEAREST WELL, DRILLING, COMPLETED,

OR APPLIED FOR, ON THIS LEASE, FT.

2640'

21. ELEVATIONS (Show whether DF, RT, GR, etc.)

6797'GL

23.

DRILLING OPERATIONS AUTHORIZED ARE
SUBJECT TO COMPLIANCE WITH ATTACHED
PROPOSED CASING AND CEMENTING PROGRAM
GENERAL REQUIREMENTS.This work is subject to BLM BISTANVA
appeal pursuant to 30 CFR 250.
QUANTITY OF CEMENT

SIZE OF HOLE	SIZE OF CASING	WEIGHT PER FOOT	SETTING DEPTH	QUANTITY OF CEMENT
13 3/4"	9 5/8"	36.0#	200'	224 cu.ft. to circulate
8 3/4"	7"	20.0#	4030'	272 cu.ft. to cover Ojo Alai
6 1/4"	4 1/2" liner	10.5#	3880-6350'	431 cu.ft. to circ. liner

Selectively perforate and sandwater fracture the Mesa Verde formation.

A 3000 psi WP and 6000 psi test double gate preventer equipped with
blind and pipe rams will be used for blow out prevention on this well.

This gas is dedicated.

The E/2 of Section 10 is dedicated to this well.

IN ABOVE SPACE DESCRIBE PROPOSED PROGRAM: If proposal is to deepen or plug back, give data on present productive zone. If proposal is to drill or deepen directionally, give pertinent data on subsurface locations and measured and true vertical depths. Give blowout
preventer program, if any.

24.

SIGNED

D. G. Buico

TITLE

Drilling Clerk

DATE

July 14, 1981

(This space for Federal or State office use)

PERMIT NO.

APPROVAL DATE

APPROVED BY

TITLE

CONDITIONS OF APPROVAL, IF ANY:

*See Instructions On Reverse Side

NMCC

APPROVED
AS AMENDEDAUG 18 1981
Dean Elliott
for JAMES F. SIMS
DISTRICT ENGINEERNSL -660
ak3

MEXICO OIL CONSERVATION COMMISS
WELL LOCATION AND ACREAGE DEDICATION PLAT

Form C-102
Supersedes C-128
Effective 1-1-65

All distances must be from the outer boundaries of the Section.

Operator EL PASO NATURAL GAS COMPANY		Lease SAN JUAN 27-4 UNIT (SF-030668)		Well No. 140
Unit Letter I	Section 10	Township 27-N	Range 4-W	County RIO ARriba
Actual Footage Location of Well: 1315 feet from the SOUTH line and 400 feet from the EAST line				
Ground Level Elev. 6797	Producing Formation MESA VERDE	Pool BLANCO MESA VERDE	Dedicated Acreage: 320.00 Acres	

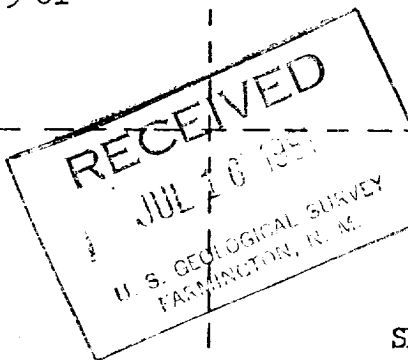
1. Outline the acreage dedicated to the subject well by colored pencil or hachure marks on the plat below.
2. If more than one lease is dedicated to the well, outline each and identify the ownership thereof (both as to working interest and royalty).
3. If more than one lease of different ownership is dedicated to the well, have the interests of all owners been consolidated by communitization, unitization, force-pooling, etc?

☒ Yes ☐ No If answer is "yes," type of consolidation unitization

If answer is "no," list the owners and tract descriptions which have actually been consolidated. (Use reverse side of this form if necessary.)

No allowable will be assigned to the well until all interests have been consolidated (by communitization, unitization, forced-pooling, or otherwise) or until a non-standard unit, eliminating such interests, has been approved by the Commission. NOTE: THIS PLAT REISSUED TO SHOW MOVED LOCATION AT FOREST RANGERS REQUEST. 4-11-74

NOTE: THIS PLAT REISSUED
TO SHOW WELL NUMBER AND
PRODUCING FORMATION CHANGES
6-9-81



SECTION 10

SF-030668

Arroyo Compañero

Rough Terrain

CERTIFICATION

I hereby certify that the information contained herein is true and complete to the best of my knowledge and belief.

S. J. Guisco

Name
Drilling Clerk
Position
El Paso Natural Gas
Company
July 14, 1981

Date

I hereby certify that the well location shown on this plat was plotted from field notes of actual surveys made by me or under my supervision, and that the same is true and correct to the best of my knowledge and belief.

Date Surveyed
NOVEMBER 19, 1973

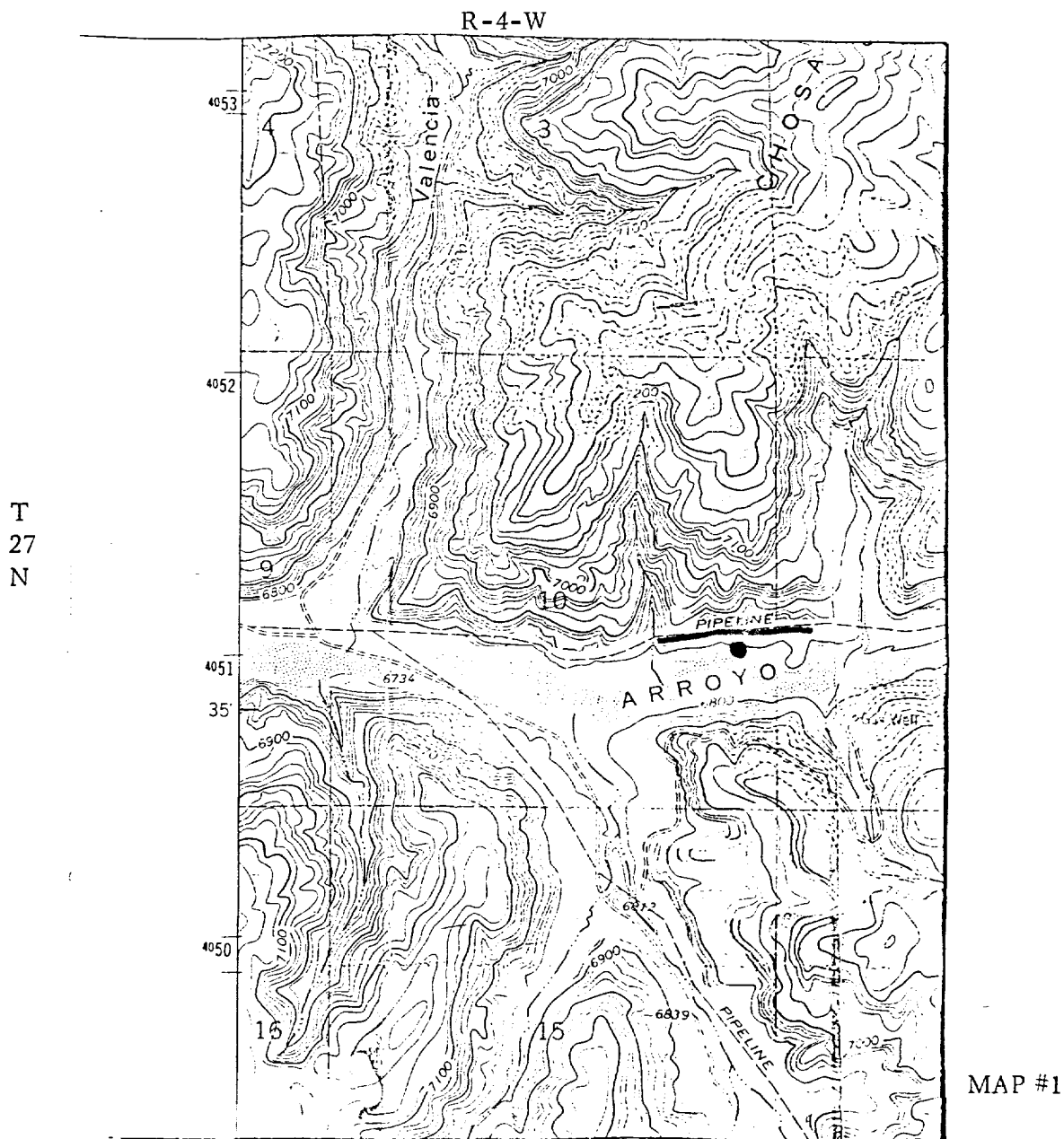
Registered Professional Engineer
and/or Land Surveyor

David Wilson

Certificate No. **1760**

0 330 660 990 1320 1650 1980 2310 2640 2000 1500 1000 500 0

EL PASO NATURAL GAS COMPANY
 San Juan 27-4 Unit #140
 SE 10-27-4



LEGEND OF RIGHT-OF-WAYS

- EXISTING ROADS —————
- EXISTING PIPELINES + + +
- EXISTING ROAD & PIPELINE + + + +
- PROPOSED ROADS —————
- PROPOSED PIPELINES + + + +
- PROPOSED ROAD & PIPELINE + + + +