

UNITED STATES
DEPARTMENT OF THE INTERIOR
GEOLOGICAL SURVEY

30-039-22879

APPLICATION FOR PERMIT TO DRILL, DEEPEN, OR PLUG BACK

1a. TYPE OF WORK
DRILL ☒ DEEPEN ☒ PLUG BACK ☐

b. TYPE OF WELL
OIL WELL ☐ GAS WELL ☒ OTHER ☐ SINGLE ZONE ☒ MULTIPLE ZONE ☐

2. NAME OF OPERATOR
Mobil Producing TX. & N.M. Inc.

3. ADDRESS OF OPERATOR
Nine Greenway Plaza, Suite 2700, Houston, Texas 77046

4. LOCATION OF WELL (Report location clearly and in accordance with any State requirements.)
At surface
990' FSL & 1838' FWL, Sec. 13, T27N, R3W
At proposed prod. zone
Same as surface

14. DISTANCE IN MILES AND DIRECTION FROM NEAREST TOWN OR POST OFFICE

15. DISTANCE FROM PROPOSED* LOCATION TO NEAREST PROPERTY OR LEASE LINE, FT. (Also to nearest drlg. unit line, if any) 990' (793')

16. NO. OF ACRES IN LEASE 2336.80

17. NO. OF ACRES ASSIGNED TO THIS WELL 5 320

18. DISTANCE FROM PROPOSED LOCATION* TO NEAREST WELL, DRILLING, COMPLETED, OR APPLIED FOR, ON THIS LEASE, FT. 3417.6

19. PROPOSED DEPTH 7000'

20. ROTARY OR CABLE TOOLS Rotary

21. ELEVATIONS (Show whether DF, RT, GR, etc.) 7081'-GR

22. APPROX. DATE WORK WILL START* As Soon As Possible

PROPOSED CASING AND CEMENTING PROGRAM

SIZE OF HOLE	SIZE OF CASING	WEIGHT PER FOOT	SETTING DEPTH	QUANTITY OF CEMENT
12-1/4"	8-5/8"*	28# H-40	0 - 350'	1. Circulate to surface
7-7/8"	5-1/2"*	14# K-55	0 - 5400'	2. circulate to surface in two stage. DV tool set at 3900'±
	5-1/2"*	15.5# K-55	5400' - 6500'	

*All casing will be new

CEMENTING PROGRAM

- Class B with 2% CaCl₂
- Lead: Howco Lt + 5#/sx gelsonite + 1/4#/sx FC
Tail: Class B + 1/4#/sx FC

MUD PROGRAM

Depth	Types of Mud	Weight	Viscosity	pH	Water Loss
0 - 350'	Spud Mud	8.8 - 9.0	40	9.5	None
350' - 6500'	Fresh Gel	8.8	35	9.5	10 cc's

BLOWOUT PREVENTER PROGRAM

See attachment

LOGGING PROGRAM

Type	Depth
SP-IEL	Surface - TD
GR-CND	Surface - TD

IN ABOVE SPACE DESCRIBE PROPOSED PROGRAM: If proposal is to deepen or plug back, give data on present productive zone and proposed new productive zone. If proposal is to drill or deepen directionally, give pertinent data on subsurface locations and measured and true vertical depths. Give blowout preventer program, if any.

24. SIGNED A.D. Bond A.D. Bond TITLE Regulatory Engineering Coordinator II DATE December 16, 1981

(This space for Federal or State office use)

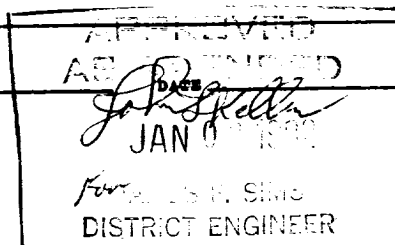
PERMIT NO. _____ APPROVAL DATE _____

APPROVED BY _____ TITLE _____

CONDITIONS OF APPROVAL, IF ANY:

Gas not dedicated

*See Instructions On Reverse Side



**NEW MEXICO OIL CONSERVATION COMMISSION
WELL LOCATION AND ACREAGE DEDICATION PLAT**

Form C-102
Supersedes C-128
Effective 1-1-65

All distances must be from the outer boundaries of the Section.

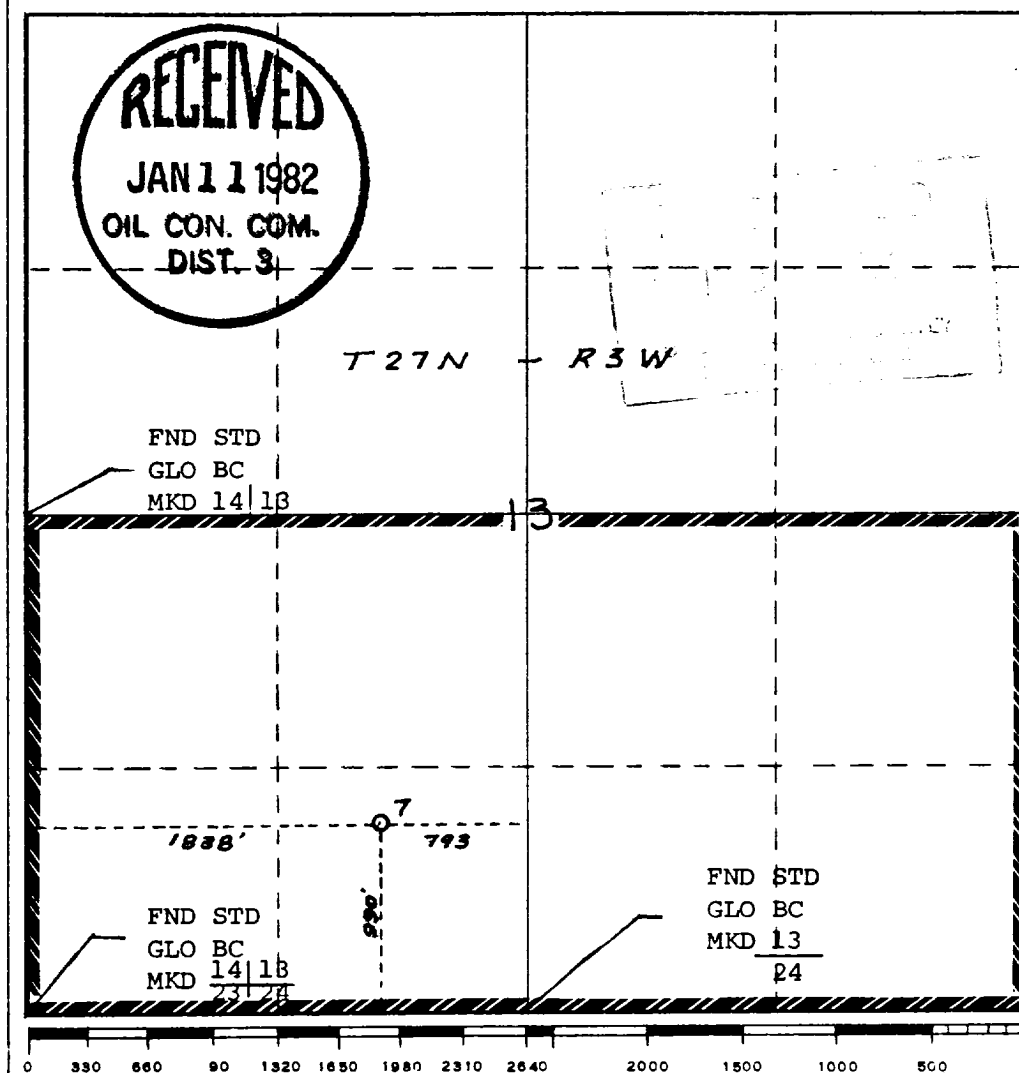
Operator Mobil Producing TX. & N.M. Inc.			Lease Jicarilla E		Well No. 7
Unit Letter N	Section 13	Township 27N	Range 3W	County Rio Arriba	
Actual Footage Location of Well: 990 feet from the South line and 1838 feet from the West line					
Ground Level Elev. 7081	Producing Formation Mesaverde		Pool Blanco Mesaverde Gas	Dedicated Acreage: 320 Acres	

1. Outline the acreage dedicated to the subject well by colored pencil or hachure marks on the plat below.
2. If more than one lease is dedicated to the well, outline each and identify the ownership thereof (both as to working interest and royalty).
3. If more than one lease of different ownership is dedicated to the well, have the interests of all owners been consolidated by communitization, unitization, force-pooling, etc?

☐ Yes ☐ No If answer is "yes," type of consolidation _____

If answer is "no," list the owners and tract descriptions which have actually been consolidated. (Use reverse side of this form if necessary.) _____

No allowable will be assigned to the well until all interests have been consolidated (by communitization, unitization, forced-pooling, or otherwise) or until a non-standard unit, eliminating such interests, has been approved by the Commission.



CERTIFICATION

I hereby certify that the information contained herein is true and complete to the best of my knowledge and belief.

Name
A.D. Bond **A.D. Bond**
Position **Regulatory Engineering Coordinator II**
Company
Mobil Producing TX. & N.M. Inc.

Date
December 16, 1981

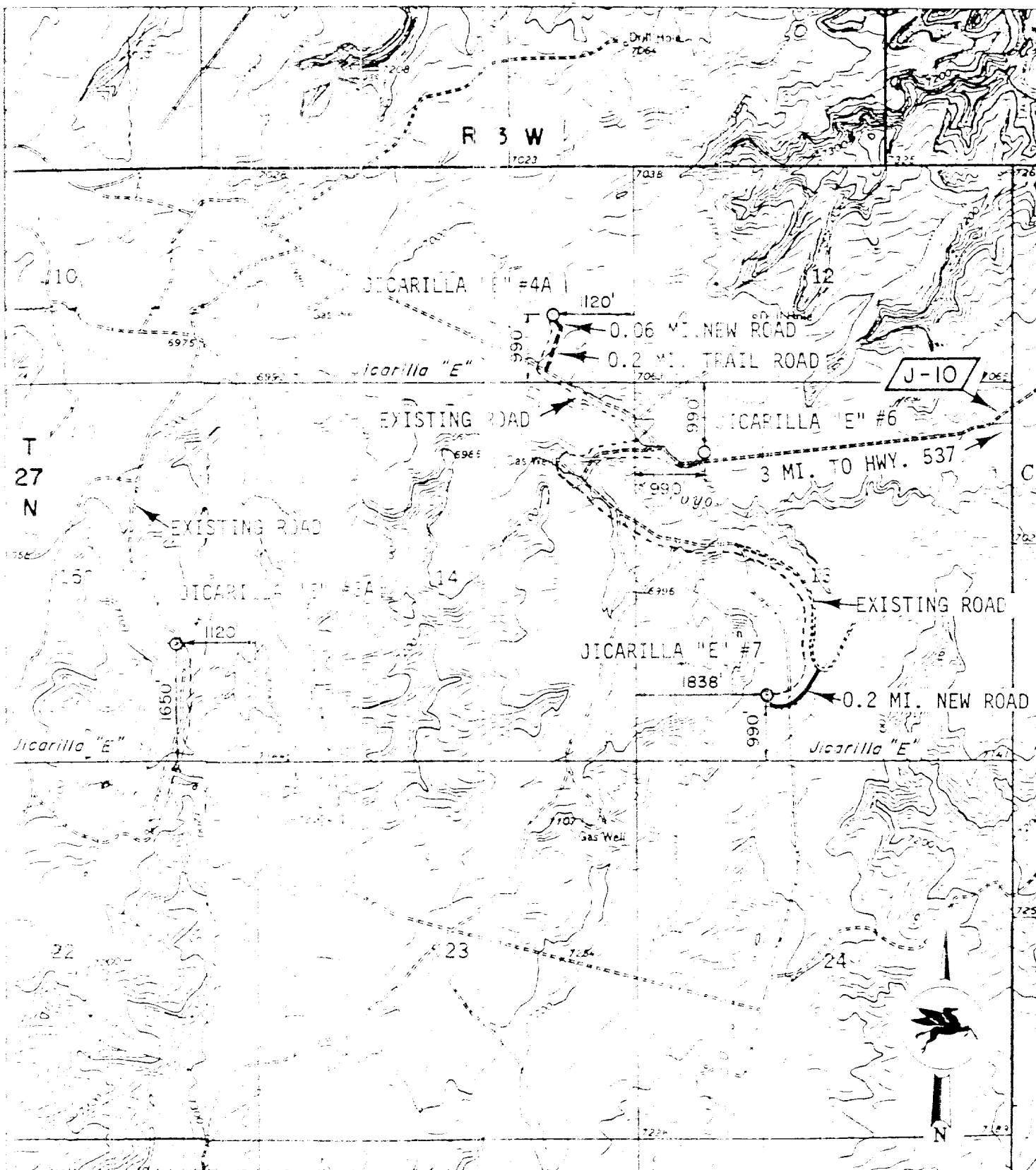
I hereby certify that the well location shown on this plat was plotted from field notes of actual surveys made by me or under my supervision and that the same is true and correct to the best of my knowledge and belief.

H.A. Carson, Jr.
H.A. CARSON, JR.
Date Surveyed
12-2-81

Registered Professional Engineer and/or Land Surveyor

H.A. Carson, Jr.

Certificate No.
5063



----- TEMPORARY FLOW LINE

Mobil Producing
Texas & New Mexico Inc.
Houston, Texas
MAP "B"
JICARILLA AREA
VICINITY PLAT
BLANCO MESA VERDE FIELD
RIO ARriba CO., N. MEXICO

Scale
Date 12-1-58
Drawn C. W. C.
Checked
Approved
Revised