

APR 2 1990
OIL CON. DIV.
DIST. 3

UNITED STATES
DEPARTMENT OF THE INTERIOR
BUREAU OF LAND MANAGEMENT

30-039-24714

APPLICATION FOR PERMIT TO DRILL, DEEPEN, OR PLUG BACK			
1a. TYPE OF WORK DRILL		5. LEASE NUMBER 080385 SF-80385	
1b. TYPE OF WELL GAS		6. IF INDIAN, ALL. OR TRIBE NAME	
2. OPERATOR UNION OIL CO. OF CAL.		7. UNIT AGREEMENT NAME RINCON UNIT	
3. ADDRESS OF OPERATOR P O BOX 2074 FARMINGTON, NM, 87401 (505)-325-8786		8. FARM OR LEASE NAME RINCON Unit	
4. LOCATION OF WELL 2593' FSL, 1568' FWL		9. WELL NO. 283	
10. FIELD, POOL, OR WILDCAT BASIN FRUITLAND COAL		11. SEC. 23, T. 27N, R. 7W K	
14. DISTANCE FROM NEAREST TOWN 40 Miles SE of Bloomfield		12. COUNTY Rio Arriba	13. STATE New Mex.
15. DISTANCE FROM PROPOSED LOCATION TO NEAREST PROPERTY OR LEASE LINE 1568'	16. ACRES IN LEASE 2560	17. ACRES ASSIGNED TO WELL 320	
18. DISTANCE FROM PROPOSED LOCATION TO NEAREST WELL DRILLING, COMPLETED OR APPLIED FOR ON THIS LEASE: 271'	19. PROPOSED DEPTH 3207'	20. ROTARY OR CABLE TOOLS Rotary <small>This action is subject to technical and procedural review pursuant to 43 CFR 3165.3 and appeal pursuant to 43 CFR 3165.4.</small>	
21. ELEVATIONS (DF, FT, GR, ETC.) 6577' GL	22. APPROX. DATE WORK WILL BEGIN Spring 1990		
23. PROPOSED CASING AND CEMENTING PROGRAM SEE ATTACHED DRILLING PLAN		DRILLING OPERATIONS AUTHORIZED ARE SUBJECT TO COMPLIANCE WITH ATTACHED "GENERAL REQUIREMENTS".	
24. AUTHORIZED BY: <u>Chas Runcel</u> AGENT		3/23/90 DATE	
PERMIT NO. _____ APPROVAL DATE _____			
APPROVED BY _____ TITLE _____ DATE _____			
NOTE: THIS FORMAT IS ISSUED IN LIEU OF BLM FORM 3160-3			

APPROVED
AS AMENDED

NMOCD

APR 20 1990
AREA MANAGER

Submit to Appropriate
District Office
State Lease - 4 copies
Fee Lease - 3 copies

State of New Mexico
Energy, Minerals and Natural Resources Department

Form C-102
Revised 1-1-89

OIL CONSERVATION DIVISION

P.O. Box 2088
Santa Fe, New Mexico 87504-2088

DISTRICT I
P.O. Box 1980, Hobbs, NM 88240

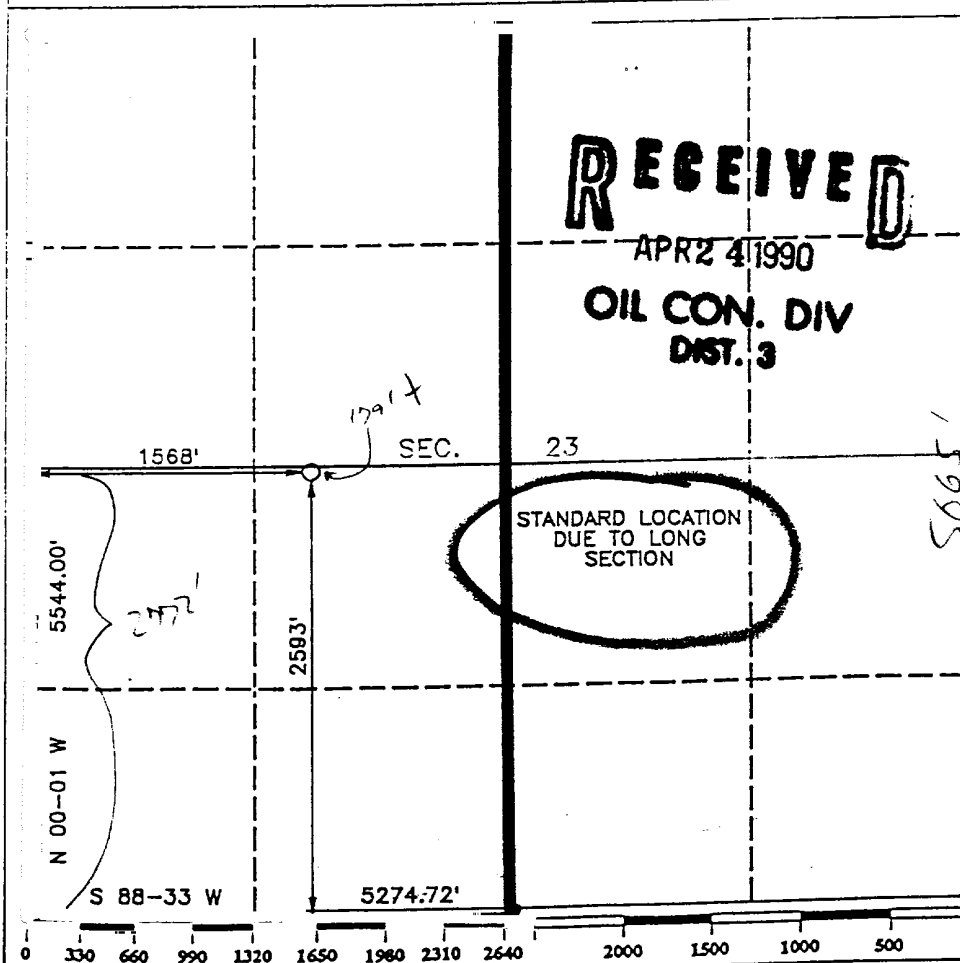
DISTRICT II
P.O. Drawer DD, Artesia, NM 88210

DISTRICT III
1000 Rio Brazos Rd., Aztec, NM 87410

WELL LOCATION AND ACREAGE DEDICATION PLAT
All Distances must be from the outer boundaries of the section

Operator UNION OIL CO. OF CALIFORNIA			Lease RINCON UNIT		Well No. 283
Unit Letter K	Section 23	Township T.27 N.	Range R.7 W.	County RIO ARriba COUNTY	
Actual Footage Location of Well: 2593 feet from the SOUTH line and 1568 feet from the WEST line					
Ground level Elev. 6577	Producing Formation FRUITLAND COAL	Pool BASIN FRUITLAND COAL	Dedicated Acreage: 320 Acres		

1. Outline the acreage dedicated to the subject well by colored pencil or hatchure marks on the plat below.
2. If more than one lease is dedicated to the well, outline each and identify the ownership thereof (both as to working interest and royalty).
3. If more than one lease of different ownership is dedicated to the well, have the interest of all owners been consolidated by communization, unitization, force-pooling, etc.?
☒ Yes ☐ No If answer is "yes" type of consolidation Unitization
If answer is "no" list the owners and tract descriptions which have actually been consolidated. (Use reverse side of this form if necessary.)
No allowable will be assigned to the well until all interests have been consolidated (by communization, unitization, forced-pooling, or otherwise) or until a non-standard unit, eliminating such interest, has been approved by the Division.



OPERATOR CERTIFICATION

I hereby certify that the information contained herein is true and complete to the best of my knowledge and belief.

Signature Chris Russell
Printed Name Chris Russell
Position AGENT
Company Union
Date 3/23/90

SURVEYOR CERTIFICATION

I hereby certify that the well location shown on this plat was plotted from field notes of actual surveys made by me or under my supervision, and that the same is true and correct to the best of my knowledge and belief.

Date Surveyed MARCH 20 1990
Signature R. Howard Dagge
Professional Surveyor NEW MEXICO
Certificate No. 3679
Registered Professional Land Surveyor

1947

1948

Testing Procedure:

The BOP and related equipment will be tested to 2000 psi in accordance with the provisions of Onshore Oil and Gas Order No. 2.

BOP's will be operationally tested daily, and each test will be logged in the IADC Daily Drilling Report.

Blooie line:

The blooie line and related equipment will meet all requirements of Onshore Oil and Gas Order No. 2.

4. CASING AND CEMENTING PROGRAM

<u>SURFACE CASING</u>						
<u>AGE</u>	<u>Depth</u>	<u>Hole Size</u>	<u>Size</u>	<u>Weight</u>	<u>Grade</u>	<u>Thread</u>
New	0-225'	12-1/4"	8-5/8"	24.0#	K-55	ST&C

<u>INTERMEDIATE CASING</u>						
<u>Age</u>	<u>Depth</u>	<u>Hole Size</u>	<u>Size</u>	<u>Weight</u>	<u>Grade</u>	<u>Thread</u>
New	0-TD	7-7/8"	4-1/2"	10.5#	K-55	ST&C

MINIMUM SAFETY FACTORS

Collapse: 1.0
Tension: 1.8
Burst: 1.0

Cementing Program:

1. The 8-5/8" surface casing will be cemented to the surface with 175 sacks of class "B" cement with 2% CaCl₂ and 1/4# per sack flocele.
2. The 4-1/2" production casing will be cemented in 2 stages with the DV tool set at 2900'. 1st stage will be cemented with 85 sacks class "H" cement with .95% Flo-Lock-1, 18% Thrifty Lite, 3% KCL, 3# Hi-seal.
2nd stage will be cemented with 325 sacks pacesetter lite with 6% gel, 1/3# cello-seal. .8% CF-1, 3# Hi-seal followed with 50 sacks class "C" cement. Actual cement volumes will be calculated from open hole logs and will be designed to circulate to surface.

