

UNITED STATES
DEPARTMENT OF THE INTERIOR
BUREAU OF LAND MANAGEMENT

SUBMIT IN TRIPLICATE*
(Other instructions on
reverse side)

30-039-24770
Form approved.
Budget Bureau No. 1004-0136
Expires August 31, 1985

APPLICATION FOR PERMIT TO DRILL, DEEPEN, OR PLUG BACK

1a. TYPE OF WORK

DRILL ☒

DEEPEN ☐

PLUG BACK ☐

b. TYPE OF WELL

OIL
WELL ☐

GAS
WELL ☒

OTHER

SINGLE
ZONE ☒

MULTIPLE
ZONE ☐

2. NAME OF OPERATOR

MESA OPERATING LIMITED PARTNERSHIP

3. ADDRESS OF OPERATOR

P.O. BOX 2009, AMARILLO, TEXAS 79189

4. LOCATION OF WELL (Report location clearly and in accordance with State requirements*)

At surface

1800' FEL 2450' FNL

At proposed prod. zone

SAME

14. DISTANCE IN MILES AND DIRECTION FROM NEAREST TOWN OR POST OFFICE*

30 miles SE from Bloomfield, New Mexico

15. DISTANCE FROM PROPOSED*

LOCATION TO NEAREST
PROPERTY OR LEASE LINE, FT.
(Also to nearest drlg. unit line, if any)

1750'

16. NO. OF ACRES IN LEASE

1920

17. NO. OF ACRES ASSIGNED
TO THIS WELL

172 E/320

18. DISTANCE FROM PROPOSED LOCATION*

TO NEAREST WELL, DRILLING, COMPLETED,
OR APPLIED FOR, ON THIS LEASE, FT.

NA

19. PROPOSED DEPTH

2370'

20. ROTARY OR CABLE TOOLS

Rotary

21. ELEVATIONS (Show whether DF, RT, GR, etc.)

6289' GR 6301

22. APPROX. DATE WORK WILL START*

This application is subject to technical and
propositional review pursuant to 43 CFR 3163.3
and appeal pursuant to 43 CFR 3165.5

PROPOSED CASING AND CEMENTING PROGRAM

SUBJECT TO COMPLIANCE WITH ATTACHED
"GENERAL REQUIREMENTS"

SIZE OF CASING	WEIGHT PER FOOT	SETTING DEPTH	QUANTITY OF CEMENT
12 1/4"	8 5/8"	24#	200'
7 7/8"	5 1/2"	17#	2370'
			150 sx "B" + 2% CaCl (Surface)
			300 Poz/250 "B" (Surface)

Propose to spud well with 12 1/4" hole and drill to 200' and set 8 5/8" surface casing. Will cement with 150 sx of Class "B" and raise cement to surface. Will nipple up 2000 psi BOP assembly and drill 7 7/8" hole to TD of 2370' with fresh water mud system. Will then log well and evaluate for possible commercial production. If successful, will then run 5 1/2" casing to + 2370' and cement with 300 sx Pozmix followed by 250 sx Class "B" cement. Will move off drilling rig and move in completion unit.

xc: BLM-Farmington (0+5), NMOCD-Aztec (1), WF, Reg, Land, Expl., Drilling

IN ABOVE SPACE DESCRIBE PROPOSED PROGRAM: If proposal is to deepen or plug back, give data on present productive zone and proposed new productive zone. If proposal is to drill or deepen directionally, give pertinent data on subsurface locations and measured and true vertical depths. Give blowout preventer program, if any.

24.

SIGNED

Charles L. McKee

TITLE Regulatory Analyst

DATE 2/02/90

(This space for Federal or State office use)

PERMIT NO.

APPROVAL DATE

APPROVED
AS AMENDED

APPROVED BY

TITLE

DATE

CONDITIONS OF APPROVAL, IF ANY:

NMOCD

*See Instructions On Reverse Side

James R. Kelly
AREA MANAGER

Submit to Appropriate
District Office
State Lease - 4 copies
Fee Lease - 3 copies

State of New Mexico
Energy, Minerals and Natural Resources Department

Form C-102
Revised 1-1-89

OIL CONSERVATION DIVISION

P.O. Box 2088
Santa Fe, New Mexico 87504-2088

DISTRICT I
P.O. Box 1980, Hobbs, NM 88240

DISTRICT II
P.O. Drawer DD, Artesia, NM 88210

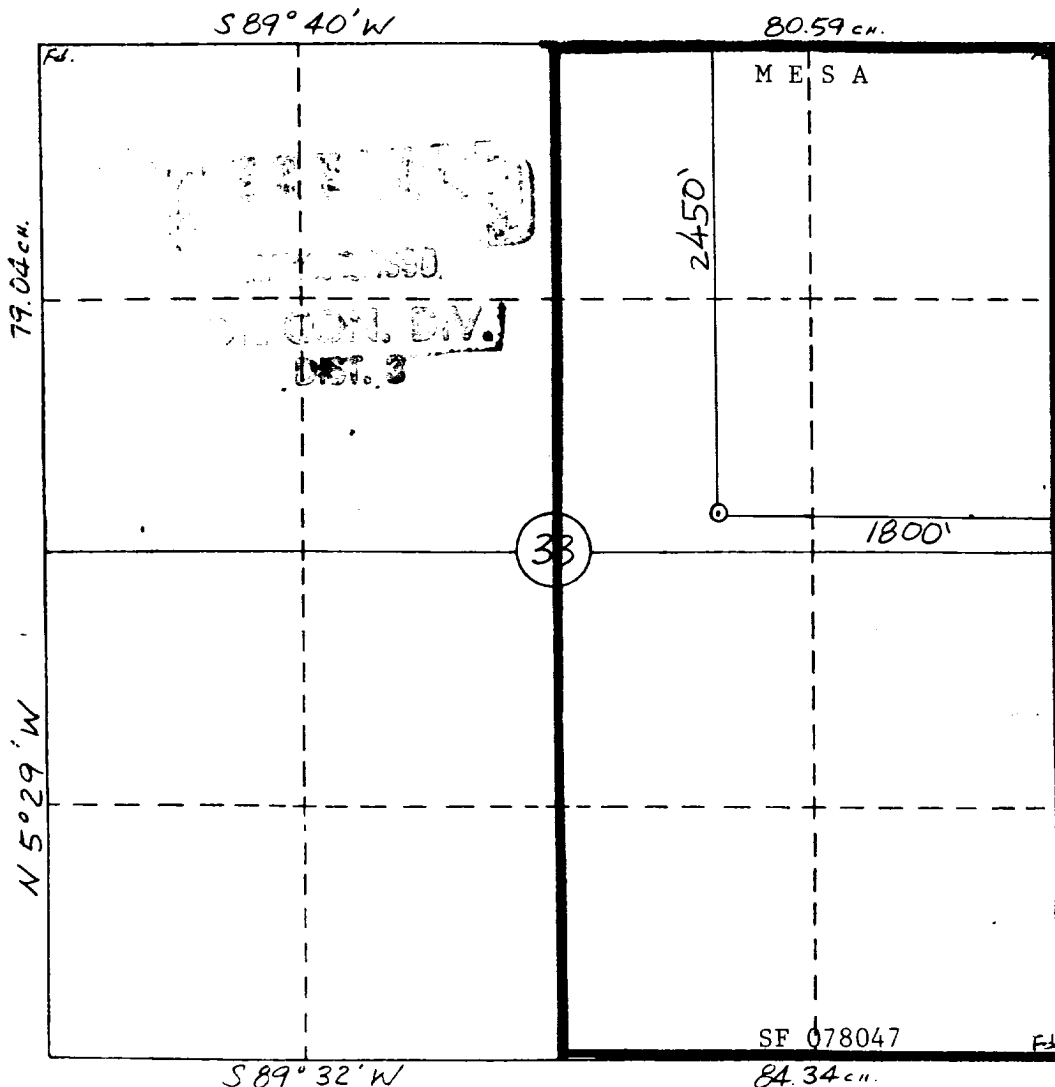
DISTRICT III
1000 Rio Brazos Rd., Aztec, NM 87410

WELL LOCATION AND ACREAGE DEDICATION PLAT

All Distances must be from the outer boundaries of the section

Operator MESA OPERATING LIMITED PARTNERSHIP			Lease FC FEDERAL		Well No. 12
Unit Letter G	Section 33	Township 26N	Range 7W	County NMPM Rio Arriba	
Actual Footage Location of Well: 2450 feet from the NORTH line and 1800 feet from the EAST line					
Ground level Elev. 6301	Producing Formation Fruitland		Pool Basin Fruitland Coal		Dedicated Acreage: E/2 320 Acres
<p>1. Outline the acreage dedicated to the subject well by colored pencil or hatchure marks on the plat below.</p> <p>2. If more than one lease is dedicated to the well, outline each and identify the ownership thereof (both as to working interest and royalty).</p> <p>3. If more than one lease of different ownership is dedicated to the well, have the interest of all owners been consolidated by communitization, unitization, force-pooling, etc.?</p> <p><input type="checkbox"/> Yes <input checked="" type="checkbox"/> No If answer is "yes" type of consolidation _____</p> <p>If answer is "no" list the owners and tract descriptions which have actually been consolidated. (Use reverse side of this form if necessary.) _____</p> <p>No allowable will be assigned to the well until all interests have been consolidated (by communitization, unitization, forced-pooling, or otherwise) or until a non-standard unit, eliminating such interest, has been approved by the Division.</p>					

0 330 660 990 1320 1650 1980 2310 2640 2000 1500 1000 500 0



OPERATOR CERTIFICATION

I hereby certify that the information contained herein is true and complete to the best of my knowledge and belief.

Signature
Carolyn L. McKee
Printed Name
Carolyn L. McKee

Position
Regulatory Analyst

Company
Mesa Ltd Partnership

Date
4/11/90

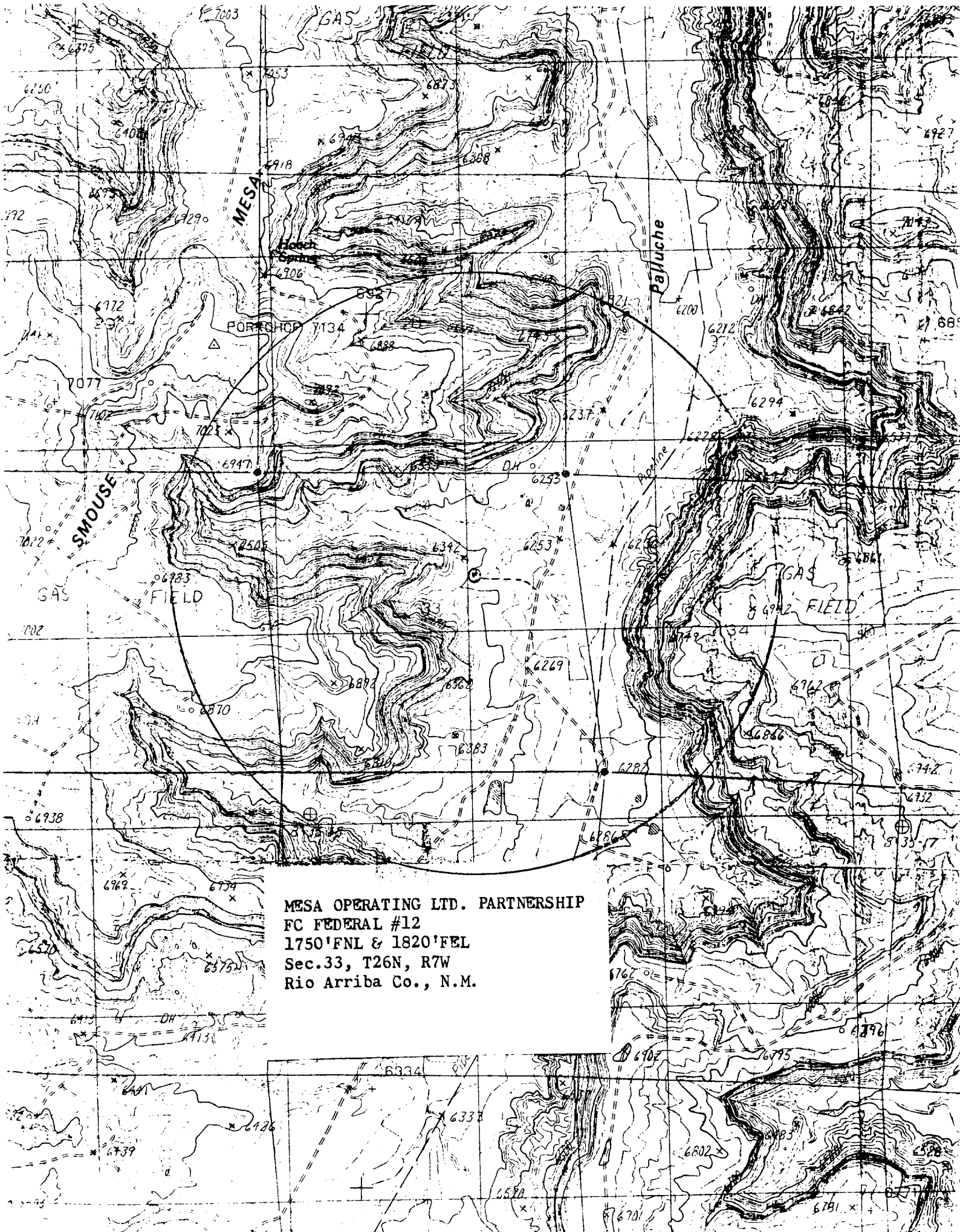
SURVEYOR CERTIFICATION

I hereby certify that the well location shown on this plat was plotted from field notes of actual surveys made by me or under my supervision, and that the same is true and correct to the best of my knowledge and belief. **3-20-90**

Date Surveyed
WILLIAM E. MAHNKE II

Signature & Seal of Professional Surveyor
William E. Mahnke II

Professional Surveyor
NEW MEXICO
#8466
Certificate No. **8466**



MESA OPERATING LTD. PARTNERSHIP
FC FEDERAL #12
1750'FNL & 1820'FEL
Sec.33, T26N, R7W
Rio Arriba Co., N.M.