

UNITED STATES
DEPARTMENT OF THE INTERIOR
BUREAU OF LAND MANAGEMENT

30-039-25186

APPLICATION FOR PERMIT TO DRILL, DEEPEN, OR PLUG BACK

1a. TYPE OF WORK
DRILL ☒ DEEPEN ☐ PLUG BACK ☐
b. TYPE OF WELL
OIL WELL ☐ GAS WELL ☒ OTHER ☐ SINGLE ZONE ☐ MULTIPLE ZONE ☒

2. NAME OF OPERATOR
Union Oil Company of California 23708

3. ADDRESS OF OPERATOR
3300 N. Butler Ste 200
Farmington, NM 87401

4. LOCATION OF WELL (Report location clearly and in accordance with any State requirements.)*
At surface
At proposed prod. zone 1140 FNL & 875 FWL
Same

14. DISTANCE IN MILES AND DIRECTION FROM NEAREST TOWN OR POST OFFICE*
20 miles SE of Blanco, NM

10. DISTANCE FROM PROPOSED*
LOCATION TO NEAREST
PROPERTY OR LEASE LINE, FT.
(Also to nearest drlg. unit line, if any) 1140

18. DISTANCE FROM PROPOSED LOCATION*
TO NEAREST WELL, DRILLING, COMPLETED,
OR APPLIED FOR, ON THIS LEASE, FT. 215

21. ELEVATIONS (Show whether DF, RT, GR, etc.)
6654' Gr.

23. PROPOSED CASING AND CEMENTING PROGRAM

SIZE OF HOLE	SIZE OF CASING	WEIGHT PER FOOT	SETTING DEPTH
12.25"	9.625"	36#	350
8.75"	7.00"	23#	7750

ClB. 2nd stage 500 sxs(935cuft) extended Cl B. tail w/ 150 sxs(177cuft)
Cl. B w/2% CaCl2

5. LEASE DESIGNATION AND SERIAL NO.
SF-079366
6. IF INDIAN, ALLOTTEE OR TRIBE NAME
N/A
7. UNIT AGREEMENT NAME
Rincon Unit
8. FARM OR LEASE NAME
Rincon Unit 11510
9. WELL NO.
180 M
10. FIELD AND POOL, OR WILDCAT
72319 71599
Blanco MV/Basin DK
11. SEC. T., R., M., OR BLK.
AND SURVEY OR AREA
D
Sec. 21-T27N-R6W
12. COUNTY OR PARISH
Rio Arriba
13. STATE
NM

17. NO. OF ACRES ASSIGNED
TO THIS WELL
72 320 71599

20. ROTARY OR CABLE TOOLS
Rotary

22. APPROX. DATE WORK WILL START*
04/15/92

DRILLING OPERATIONS AUTHORIZED ARE
SUBJECT TO COMPLIANCE WITH ATTACHED

"GENERAL REQUIREMENTS"

200sxs CL B (236 cuft)

350sxs (655 cuft) extended

Cl. B. tail w/ 150 sxs(177cuft)

Union Oil Company of California wishes to advise that we intend to drill a 12.25" hole to 350' with mud. Run 9.625" casing to 350' and cement to surface with 200 sxs Cl B cement. Nipple up and test BOP. Drill 8.75" hole to 7750' with mud. Log well. Run 7" production casing to 7750'. Cement with 350 sxs extended Cl. B. tailed with 150 sxs Cl. B. Second stage 500 sxs extended Cl. B tailed by 150 sxs Cl.B. with 2% CaCl2. Perforate pay section in the Mesaverde and Dakota Sands. Stimulate as required.

RECEIVED

JUN 18 1992

RECEIVED
BLM
JUN 21 AM 11:41
COLUMBIA COUNTY, N.M.

IN ABOVE SPACE DESCRIBE PROPOSED PROGRAM: If proposal is to deepen or plug back, give data on present productive zone and proposed new productive zone. If proposal is to drill or deepen directionally, give pertinent data on subsurface location and measured and true vertical depths. Give blowout preventer program, if any.

24. SIGNED Jim Benson TITLE Dist. Drlg. Supt. DATE 3/26/92

(This space for Federal or State office use)

PERMIT NO. _____ APPROVAL DATE _____

APPROVED BY _____ TITLE _____

CONDITIONS OF APPROVAL, IF ANY:

OK

NMOCD

*See Instructions On Reverse Side

Title 18 U.S.C. Section 1001, makes it a crime for any person knowingly and willfully to make to any department or agency of the United States any false, fictitious or fraudulent statements or representations as to any matter within its jurisdiction.

174349

NOV 1971

NOV 1971

18/0899

18/0899

18/0899

Submit to Appropriate
District Office
State Lease - 4 copies
Fee Lease - 3 copies

State of New Mexico
Energy, Minerals and Natural Resources Department

Form C-102
Revised 1-1-89

OIL CONSERVATION DIVISION

P.O. Box 2088
Santa Fe, New Mexico 87504-2088

DISTRICT I
P.O. Box 1900, Hobbs, NM 88240

DISTRICT II
P.O. Drawer DD, Artesia, NM 88210

DISTRICT III
1000 Rio Brazos Rd., Aztec, NM 87410

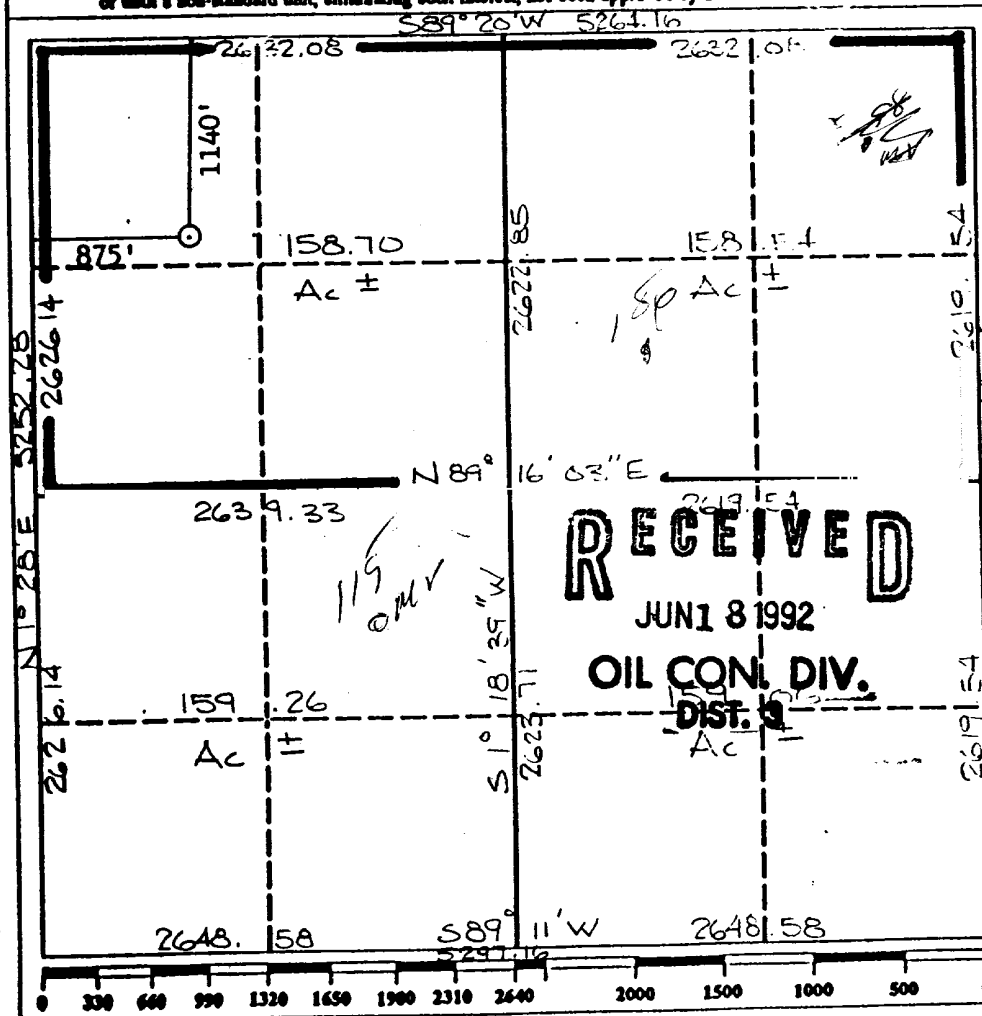
WELL LOCATION AND ACREAGE DEDICATION PLAT
All Distances must be from the outer boundaries of the section

RECEIVED
BLM

019 FARM LICATION N.M.
92 MAR 31 AM 11:40
180 M

Operator UNOCAL			Lease RINCON		Well No. 4
Unit Letter D	Section 21	Township T27N	Range 6 W	County NMPM	Rio Arriba
Actual Footage Location of Well: 1140 feet from the North line and 875 feet from the West line					
Ground level Elev. 6654	Producing Formation Mesaverde/Dakota		Pool Blanco/Basin		Dedicated Acres W/2 320/320

- Outline the acreage dedicated to the subject well by colored pencil or hatchure marks on the plat below.
- If more than one lease is dedicated to the well, outline each and identify the ownership thereof (both as to working interest and royalty).
- If more than one lease of different ownership is dedicated to the well, have the interest of all owners been consolidated by communitization, unitization, force-pooling, etc.?
☐ Yes ☐ No If answer is "yes" type of consolidation _____
If answer is "no" list the owners and tract descriptions which have actually been consolidated. (Use reverse side of this form if necessary.)
No allowable will be assigned to the well until all interests have been consolidated (by communitization, unitization, forced-pooling, or otherwise) or until a non-standard unit, eliminating such interest, has been approved by the Division.



OPERATOR CERTIFICATION

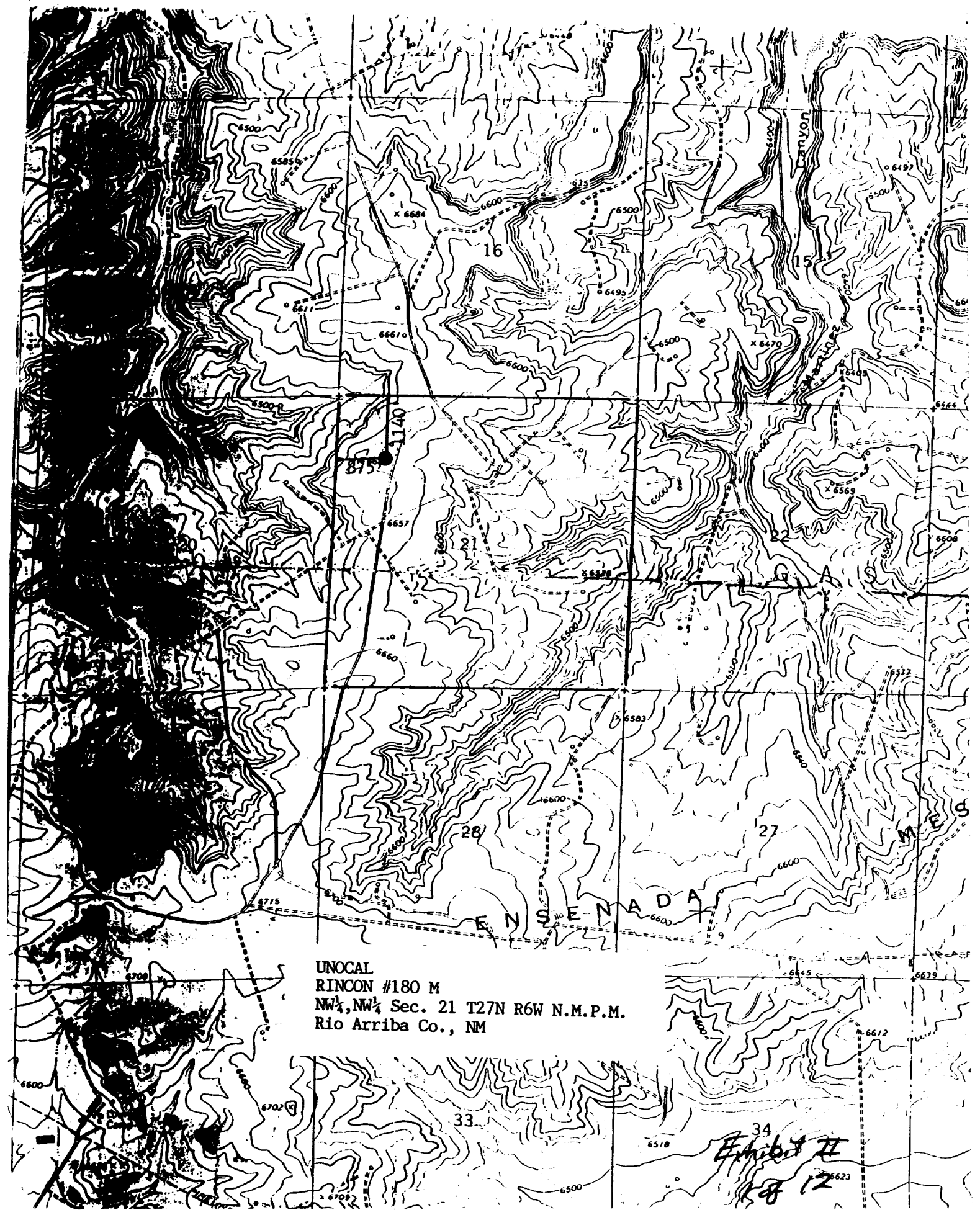
I hereby certify that the information contained herein is true and complete to the best of my knowledge and belief.

Signature *Robert C. Frank*
Printed Name **Robert C. Frank**
Position **Agent**
Company **Union Oil Company of California**
Date **March 20, 1992**

SURVEYOR CERTIFICATION

I hereby certify that the well location shown on this plat was plotted from field notes of actual surveys made by me or under my supervision, and that the same is true and correct to the best of my knowledge and belief.

Date Surveyed **8. TULSA**
Signature *Cecil B. Tullis*
Professional Surveyor **9672**
Cecil B. Tullis
Certificate No. **9672**
Exhibit 1



UNOCAL
RINCON #180 M
NW $\frac{1}{4}$, NW $\frac{1}{4}$ Sec. 21 T27N R6W N.M.P.M.
Rio Arriba Co., NM

34
Exhibit II
18 12