

UNITED STATES
DEPARTMENT OF THE INTERIOR
BUREAU OF LAND MANAGEMENT

SUBMIT IN TRIPLICATE*
(Other instructions on re-
verse side)

Budget Bureau No. 1004-0135
Expires August 31, 1985

5. LEASE DESIGNATION AND SERIAL NO.

SF-079366

6. IF INDIAN, ALLOTTEE OR TRIBE NAME

7. UNIT AGREEMENT NAME

Rincon Unit

8. FARM OR LEASE NAME

9. WELL NO.

#180M

10. FIELD AND POOL, OR WILDCAT

Mesa Verde/Dakota

11. SEC., T., R., M., OR BLK. AND
SURVEY OR AREA

T27N-R6W, Sec. 21: NW $\frac{1}{4}$

12. COUNTY OR PARISH

Rio Arriba

13. STATE

NM

1. OIL WELL ☐ GAS WELL ☒ OTHER

2. NAME OF OPERATOR

Union Oil Company of California

3. ADDRESS OF OPERATOR

3300 North Butler, Ste. 200, Farmington, NM 87401

4. LOCATION OF WELL (Report location clearly and in accordance with any State requirements.*
See also space 17 below.)
At surface

T27N-R6W, Sec. 21: NW $\frac{1}{4}$

1140' FNL, 875' FWL

14. PERMIT NO.

15. ELEVATIONS (Show whether OP, RT, GR, etc.)

6654' GR

16. Check Appropriate Box To Indicate Nature of Notice, Report, or Other Data

NOTICE OF INTENTION TO:

TEST WATER SHUT-OFF

FRACTURE TREAT

SHOOT OR ACIDIZE

REPAIR WELL

(Other)

PULL OR ALTER CASING

MULTIPLE COMPLETE

ABANDON*

CHANGE PLANS

SUBSEQUENT REPORT OF:

WATER SHUT-OFF

FRACTURE TREATMENT

SHOOTING OR ACIDIZING

(Other) See Below

REPAIRING WELL

ALTERING CASING

ABANDONMENT*

(NOTE: Report results of multiple completion on Well
Completion or Recompletion Report and Log form.)

17. DESCRIBE PROPOSED OR COMPLETED OPERATIONS (Clearly state all pertinent details, and give pertinent dates, including estimated date of starting any proposed work. If well is directionally drilled, give subsurface locations and measured and true vertical depths for all markers and zones pertinent to this work.)*

Union Oil Company of California is requesting to install a well tie from their Rincon Unit #180M to an existing EPNG pipeline. The #180M will be a dual completion to MV and DK and will be metered separately on the pad and commingled into the EPNG line. Royalties for both zones are the same.

Tie Length (BLM) - 232.06'

Pipe Specifications: 3 $\frac{1}{2}$ " O.D., Sch. 40, GR-B

Max Operating Pressure: 400 PSI

Test Pressure: 1000 PSI

Working Pressure: 300 PSI

RECEIVED
JUL 20 1992

OIL CON. DIV.
DIST. 3

APPROVED

JUL 16 1992

AREA MANAGER

019 FARMINGTON, N.M.

92 JUN 12 PM 1:29

RECEIVED
BLM

18. I hereby certify that the foregoing is true and correct

SIGNED

Glen O. Papp

TITLE District Prod. Engr.

DATE 6/11/92

(This space for Federal or State office use)

APPROVED BY

TITLE

DATE

CONDITIONS OF APPROVAL, IF ANY:

*See Instructions on Reverse Side

NMOCD

Title 18 U.S.C. Section 1001, makes it a crime for any person knowingly and willfully to make to any department or agency of the United States any false, fictitious or fraudulent statements or representations as to any matter within its jurisdiction.

[illegible]

1998, 1999, 2000, 2001, 2002, 2003, 2004, 2005, 2006, 2007, 2008, 2009, 2010, 2011, 2012, 2013, 2014, 2015, 2016, 2017, 2018, 2019, 2020, 2021, 2022, 2023, 2024, 2025, 2026, 2027, 2028, 2029, 2030, 2031, 2032, 2033, 2034, 2035, 2036, 2037, 2038, 2039, 2040, 2041, 2042, 2043, 2044, 2045, 2046, 2047, 2048, 2049, 2050, 2051, 2052, 2053, 2054, 2055, 2056, 2057, 2058, 2059, 2060, 2061, 2062, 2063, 2064, 2065, 2066, 2067, 2068, 2069, 2070, 2071, 2072, 2073, 2074, 2075, 2076, 2077, 2078, 2079, 2080, 2081, 2082, 2083, 2084, 2085, 2086, 2087, 2088, 2089, 2090, 2091, 2092, 2093, 2094, 2095, 2096, 2097, 2098, 2099, 2100, 2101, 2102, 2103, 2104, 2105, 2106, 2107, 2108, 2109, 2110, 2111, 2112, 2113, 2114, 2115, 2116, 2117, 2118, 2119, 2120, 2121, 2122, 2123, 2124, 2125, 2126, 2127, 2128, 2129, 2130, 2131, 2132, 2133, 2134, 2135, 2136, 2137, 2138, 2139, 2140, 2141, 2142, 2143, 2144, 2145, 2146, 2147, 2148, 2149, 2150, 2151, 2152, 2153, 2154, 2155, 2156, 2157, 2158, 2159, 2160, 2161, 2162, 2163, 2164, 2165, 2166, 2167, 2168, 2169, 2170, 2171, 2172, 2173, 2174, 2175, 2176, 2177, 2178, 2179, 2180, 2181, 2182, 2183, 2184, 2185, 2186, 2187, 2188, 2189, 2190, 2191, 2192, 2193, 2194, 2195, 2196, 2197, 2198, 2199, 2200, 2201, 2202, 2203, 2204, 2205, 2206, 2207, 2208, 2209, 2210, 2211, 2212, 2213, 2214, 2215, 2216, 2217, 2218, 2219, 2220, 2221, 2222, 2223, 2224, 2225, 2226, 2227, 2228, 2229, 2230, 2231, 2232, 2233, 2234, 2235, 2236, 2237, 2238, 2239, 2240, 2241, 2242, 2243, 2244, 2245, 2246, 2247, 2248, 2249, 2250, 2251, 2252, 2253, 2254, 2255, 2256, 2257, 2258, 2259, 2260, 2261, 2262, 2263, 2264, 2265, 2266, 2267, 2268, 2269, 2270, 2271, 2272, 2273, 2274, 2275, 2276, 2277, 2278, 2279, 2280, 2281, 2282, 2283, 2284, 2285, 2286, 2287, 2288, 2289, 2290, 2291, 2292, 2293, 2294, 2295, 2296, 2297, 2298, 2299, 2300, 2301, 2302, 2303, 2304, 2305, 2306, 2307, 2308, 2309, 2310, 2311, 2312, 2313, 2314, 2315, 2316, 2317, 2318, 2319, 2320, 2321, 2322, 2323, 2324, 2325, 2326, 2327, 2328, 2329, 2330, 2331, 2332, 2333, 2334, 2335, 2336, 2337, 2338, 2339, 2340, 2341, 2342, 2343, 2344, 2345, 2346, 2347, 2348, 2349, 2350, 2351, 2352, 2353, 2354, 2355, 2356, 2357, 2358, 2359, 2360, 2361, 2362, 2363, 2364, 2365, 2366, 2367, 2368, 2369, 2370, 2371, 2372, 2373, 2374, 2375, 2376, 2377, 2378, 2379, 2380, 2381, 2382, 2383, 2384, 2385, 2386, 2387, 2388, 2389, 2390, 2391, 2392, 2393, 2394, 2395, 2396, 2397, 2398, 2399, 2400, 2401, 2402, 2403, 2404, 2405, 2406, 2407, 2408, 2409, 2410, 2411, 2412, 2413, 2414, 2415, 2416, 2417, 2418, 2419, 2420, 2421, 2422, 2423, 2424, 2425, 2426, 2427, 2428, 2429, 2430, 2431, 2432, 2433, 2434, 2435, 2436, 2437, 2438, 2439, 2440, 2441, 2442, 2443, 2444, 2445, 2446, 2447, 2448, 2449, 2450, 2451, 2452, 2453, 2454, 2455, 2456, 2457, 2458, 2459, 2460, 2461, 2462, 2463, 2464, 2465, 2466, 2467, 2468, 2469, 2470, 2471, 2472, 2473, 2474, 2475, 2476, 2477, 2478, 2479, 2480, 2481, 2482, 2483, 2484, 2485, 2486, 2487, 2488, 2489, 2490, 2491, 2492, 2493, 2494, 2495, 2496, 2497, 2498, 2499, 2500, 2501, 2502, 2503, 2504, 2505, 2506, 2507, 2508, 2509, 2510, 2511, 2512, 2513, 2514, 2515, 2516, 2517, 2518, 2519, 2520, 2521, 2522, 2523, 2524, 2525, 2526, 2527, 2528, 2529, 2530, 2531, 2532, 2533, 2534, 2535, 2536, 2537, 2538, 2539, 2540, 2541, 2542, 2543, 2544, 2545, 2546, 2547, 2548, 2549, 2550, 2551, 2552, 2553, 2554, 2555, 2556, 2557, 2558, 2559, 2560, 2561, 2562, 2563, 2564, 2565, 2566, 2567, 2568, 2569, 2570, 2571, 2572, 2573, 2574, 2575, 2576, 2577, 2578, 2579, 2580, 2581, 2582, 2583, 2584, 2585, 2586, 2587, 2588, 2589, 2590, 2591, 2592, 2593, 2594, 2595, 2596, 2597, 2598, 2599, 2600, 2601, 2602, 2603, 2604, 2605, 2606, 2607, 2608, 2609, 2610, 2611, 2612, 2613, 2614, 2615, 2616, 2617, 2618, 2619, 2620, 2621, 2622, 2623, 2624, 2625, 2626, 2627, 2628, 2629, 2630, 2631, 2632, 2633, 2634, 2635, 2636, 2637, 2638, 2639, 2640, 2641, 2642, 2643, 2644, 2645, 2646, 2647, 2648, 2649, 2650, 2651, 2652, 2653, 2654, 2655, 2656, 2657, 2658, 2659, 2660, 2661, 2662, 2663, 2664, 2665, 2666, 2667, 2668, 2669, 2670, 2671, 2672, 2673, 2674, 2675, 2676, 2677, 2678, 2679, 26

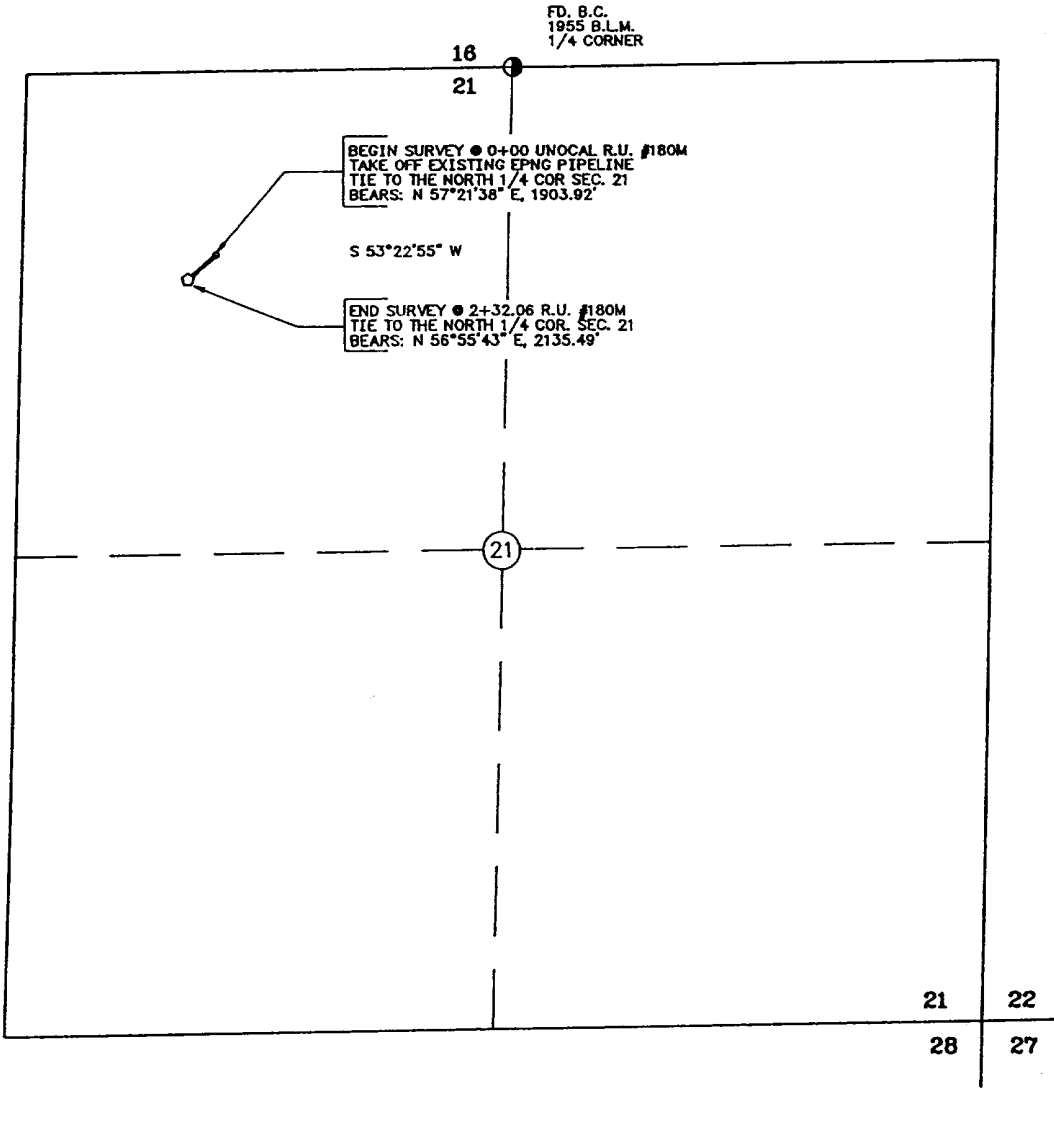
the 1990s, the number of people in the world who are under 15 years of age is expected to increase from 1.1 billion to 1.5 billion. The number of people aged 65 and over is expected to increase from 200 million to 400 million. The number of people aged 15 and over is expected to increase from 3.5 billion to 4.5 billion. The number of people aged 15 and over is expected to increase from 3.5 billion to 4.5 billion. The number of people aged 15 and over is expected to increase from 3.5 billion to 4.5 billion.

000000

RINCON UNIT #180M

NW1/4 SEC. 21, T 27 N, R 6 W, N.M.P.M.
RIO ARriba COUNTY, NEW MEXICO

B.L.M.	0+00 TO 2+32.06	232.06 FT./ 14.06 RODS
--------	-----------------	------------------------



I, NEALE C. EDWARDS, A REGISTERED PROFESSIONAL SURVEYOR UNDER THE LAWS OF THE STATE OF NEW MEXICO, HEREBY CERTIFY THAT THIS PLAT WAS PREPARED FROM FIELD NOTES OF AN ACTUAL SURVEY MEETING THE MINIMUM REQUIREMENTS OF THE STANDARDS FOR LAND SURVEYS AND IS TRUE AND CORRECT TO THE BEST OF MY KNOWLEDGE AND BELIEF.

NOTES:

- 1.) BASIS OF BEARING: SOLAR OBSERVATION
- 2.) ALL OFFSET DISTANCES ARE SLACK CHAIN DISTANCES.

6-11-92
DATE:

NEALE C. EDWARDS
N.M.R.L.S. #6857

SCALE: 1" = 1000'

UNOCAL FARMINGTON, NEW MEXICO		GAS PIPELINE	
DATE SURVEYED: 6/9/92	REV. DATE:	DATE DRAWN: 6/10/92	DRAWN BY: J.B.
SURVEYED BY: N.C. E SURVEYS, INC. 4900 KAYENTA DRIVE FARMINGTON, NEW MEXICO 87402 (505) 325-2654		PREPARED BY: TRIGON ENGINEERING INC DENVER COLORADO FARMINGTON NEW MEXICO	

