

UNITED STATES
DEPARTMENT OF THE INTERIOR
BUREAU OF LAND MANAGEMENT

30-039-25214

APPLICATION FOR PERMIT TO DRILL, DEEPEN, OR PLUG BACK

1a. TYPE OF WORK
DRILL ☒ DEEPEN ☐ PLUG BACK ☐

b. TYPE OF WELL
OIL WELL ☐ GAS WELL ☒ OTHER ☐
SINGLE ZONE ☐ MULTIPLE ZONE ☒

2. NAME OF OPERATOR
Union Oil Company of California 23708

3. ADDRESS OF OPERATOR
3300 N. Butler Ste 200
Farmington, NM 87401

4. LOCATION OF WELL (Report location clearly and in accordance with any State requirements.)
At surface
At proposed prod. zone 850 FNL & 800 FWL
Same

14. DISTANCE IN MILES AND DIRECTION FROM NEAREST TOWN OR POST OFFICE*
23 miles SE of Blanco, NM

15. DISTANCE FROM PROPOSED*
LOCATION TO NEAREST
PROPERTY OR LEASE LINE, FT.
(Also to nearest drig. unit line, if any) 850

16. NO. OF ACRES IN LEASE
2605.33

18. DISTANCE FROM PROPOSED LOCATION*
TO NEAREST WELL, DRILLING, COMPLETED,
OR APPLIED FOR, ON THIS LEASE, FT. 2500

19. PROPOSED DEPTH
7814'

21. ELEVATIONS (Show whether DF, RT, GR, etc.)
6656' Gr.
This action is subject to technical and
procedural review pursuant to 43 CFR 3165.3
and appeal pursuant to 43 CFR 3165.4.

17. NO. OF ACRES ASSIGNED
TO THIS WELL
N/2 320.00/320

20. ROTARY OR CABLE TOOLS
Rotary

22. APPROX. DATE WORK WILL START**
07/15/92

23. PROPOSED CASING AND CEMENTING PROGRAM

SIZE OF HOLE	SIZE OF CASING	WEIGHT PER FOOT	SETTING DEPTH	QUANTITY OF CEMENT
12.25"	8.625"	24#	350	250sxs+/- CL B (293 cuft)
7.875"	5.50"	17#	7814	550sxs+/- (699 cuft) 50/50/2 Poz

loss control tail with 100 sxs (117 cuft) Cl. B. 2nd stage 450 sxs+/- (1265 cuft) Cl. B
with 3% sodium metasilicate tailed with 100 sxs (117 cuft) Cl B.
containing gel, dispersant, fluid

Union Oil Company of California wishes to advise that we intend to drill
a 12.25" hole to 350' with mud. Run 8.625" casing to 350' and cement to
surface with 250 sxs+/- Cl B cement. Nipple up and test BOP. Drill 7.875" hole
to 7814' with mud. Log well. Run 5.5" production casing to 7814'. Cement with
550 sxs+/- 50/50/2 Poz. Tailed with 100 sxs Cl. B. Second stage 450 sxs+/-
Cl. B with 3% sodium metasilicate, tailed by 100 sxs Cl.B. Perforate pay
section in the Mesaverde and Dakota Sands. Stimulate as required.

IN ABOVE SPACE DESCRIBE PROPOSED PROGRAM: If proposal is to deepen or plug back, give data on present productive zone and proposed new productive zone. If proposal is to drill or deepen directionally, give pertinent data on subsurface locations and measured and true vertical depths. Give blowout preventer program, if any.

24. SIGNED Jim Benson TITLE Dist. Drlg. Supt. DATE 6/10/92

(This space for Federal or State office use)

PERMIT NO. RECEIVED APPROVAL DATE APPROVED

APPROVED BY AUG 2 5 1992 TITLE AUG 21 1992

CONDITIONS OF APPROVAL

OIL CON. DIV.
DIST. 3

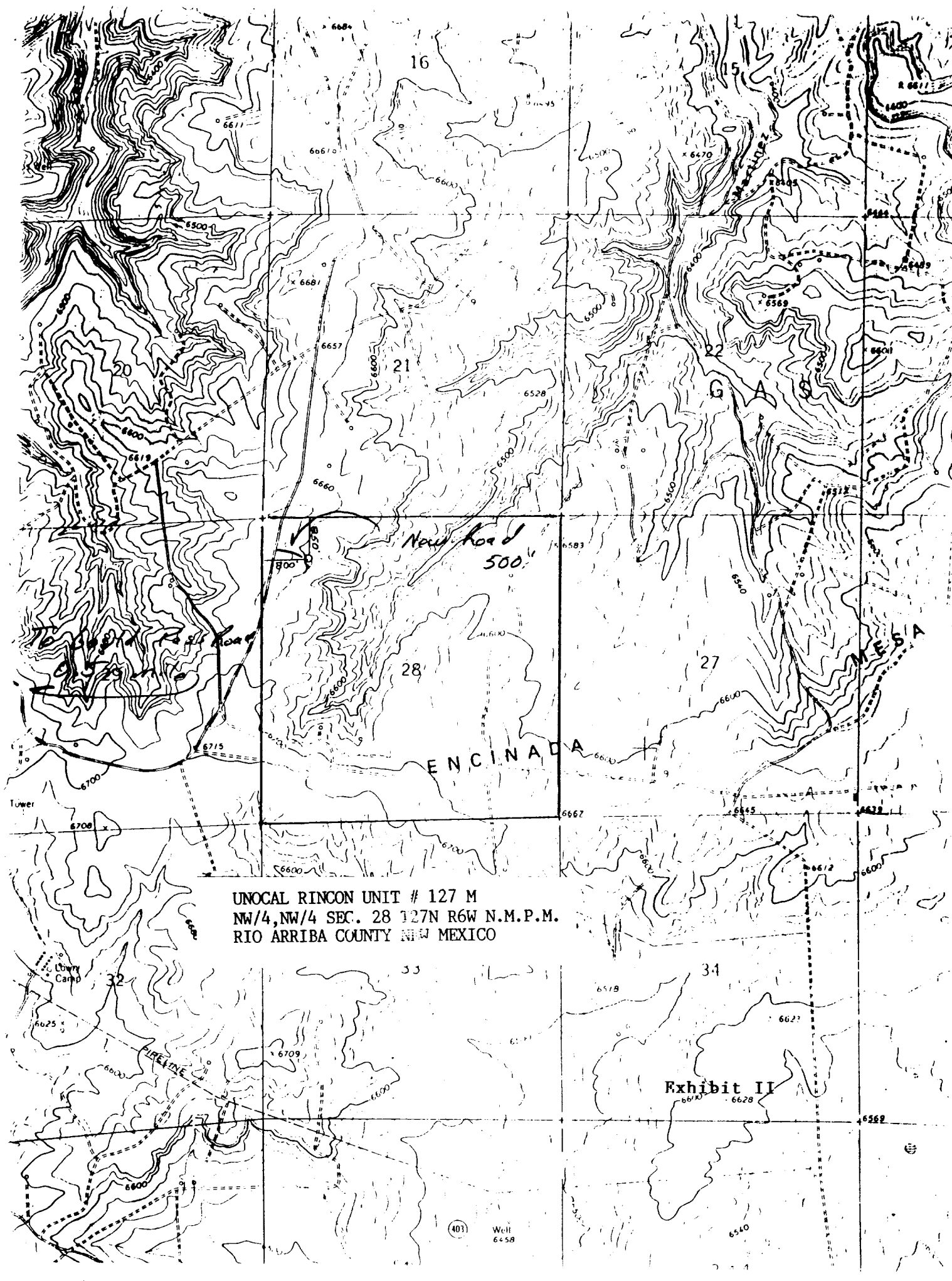
NMCOO

*See Instructions On Reverse Side

APPROVED
AS AMENDED

AUG 21 1992
AREA MANAGER

Exhibit I



UNOCAL RINCON UNIT # 127 M
NW/4, NW/4 SEC. 28 127N R6W N.M.P.M.
RIO ARriba COUNTY NEW MEXICO

Exhibit II