

UNITED STATES
DEPARTMENT OF THE INTERIOR
BUREAU OF LAND MANAGEMENT

APPLICATION FOR PERMIT TO DRILL, DEEPEN, OR PLUG BACK

1a. TYPE OF WORK

DRILL ☒ XX

DEEPEN ☐

PLUG BACK ☐

b. TYPE OF WELL

OIL
WELL ☐

GAS
WELL ☒ XX

OTHER

SINGLE
ZONE ☐

MULTIPLE
ZONE ☒ XX

2. NAME OF OPERATOR

23708 Union Oil Company of California

3. ADDRESS OF OPERATOR

3300 N. Butler Ste 200

Farmington, NM 87401

4. LOCATION OF WELL (Report location clearly and in accordance with any State requirements.)*

At surface

At proposed prod. zone 1175 FSL & 1185 FEL

Same

14. DISTANCE IN MILES AND DIRECTION FROM NEAREST TOWN OR POST OFFICE*

20 miles SE of Blanco, NM

10. DISTANCE FROM PROPOSED*

LOCATION TO NEAREST

PROPERTY OR LEASE LINE, FT.

(Also to nearest drg. unit line, if any)

1175

18. DISTANCE FROM PROPOSED LOCATION*
TO NEAREST WELL, DRILLING, COMPLETED,
OR APPLIED FOR, ON THIS LEASE, FT.

235

16. NO. OF ACRES IN LEASE

2605.33

17. NO. OF ACRES ASSIGNED
TO THIS WELL

320/320
S/2 319.94

19. PROPOSED DEPTH

7724'

20. ROTARY OR CABLE TOOLS

Rotary

21. ELEVATIONS (Show whether DF, RT, GR, etc.)

6625' Gr.

22. APPROX. DATE WORK WILL START*

09/01/92

23.

PROPOSED CASING AND CEMENTING PROGRAM

SIZE OF HOLE	SIZE OF CASING	WEIGHT PER FOOT	SETTING DEPTH
12.25"	8.625"	24#	350
7.875"	5.50"	17#	7724
Stage tool @ 4700+ +-			

DRILLING OPERATIONS AUTHORIZED
SUBJECT TO REVIEW WITH ATTACHED
"GENERAL REQUIREMENTS"

250sxs+/- Cl B (293 cuft)
550sxs+/- (699 cuft) 50/50/2 Foz
containing gel, dispersant, fluid

loss control tail with 100 sxs (117 cuft) Cl. B. 2nd stage 450 sxs+/- (1265 cuft) Cl. B
with 3% sodium metasilicate tailed with 100 sxs (117 cuft) Cl B.

Union Oil Company of California wishes to advise that we intend to drill
a 12.25" hole to 350' with mud. Run 8.625" casing to 350' and cement to
surface with 250 sxs+/- Cl B cement. Nipple up and test BOP. Drill 7.875" hole
to 7724' with mud. Log well. Run 5.5" production casing to 7724'. Cement with
550 sxs+/- 50/50/2 Poz. Tailed with 100 sxs Cl. B. Second stage 450 sxs+/-
Cl. B with 3% sodium metasilicate, tailed by 100 sxs Cl.B. Perforate pay
section in the Mesaverde and Dakota Sands. Stimulate as required.

RECEIVED
BLM
92 AUG 23 PM 2:37
019 FARMINGTON, N.M.

IN ABOVE SPACE DESCRIBE PROPOSED PROGRAM: If proposal is to deepen or plug back, give data on present productive zone and proposed new productive zone. If proposal is to drill or deepen directionally, give pertinent data on subsurface locations and measured and true vertical depths. Give blowout preventer program, if any.

24.

SIGNED

Robert C. Trand

TITLE

Agent

(This space for Federal or State office use)

PERMIT NO.

APPROVAL

APPROVED BY

CONDITIONS OF APPROVAL, IF ANY:

TITLE

NMOCD

*See Instructions On Reverse Side

Title 18 U.S.C. Section 1001, makes it a crime for any person knowingly and willfully to make to any department or agency of the United States any false, fictitious or fraudulent statements or representations as to any matter within its jurisdiction.

RECEIVED
SEP 10 1992

APPROVED
OIL CON. DIV. AS AMENDED
DIST. 3
SEP 04 1992

AREA MANAGER

Form C 102
Revised 11/11

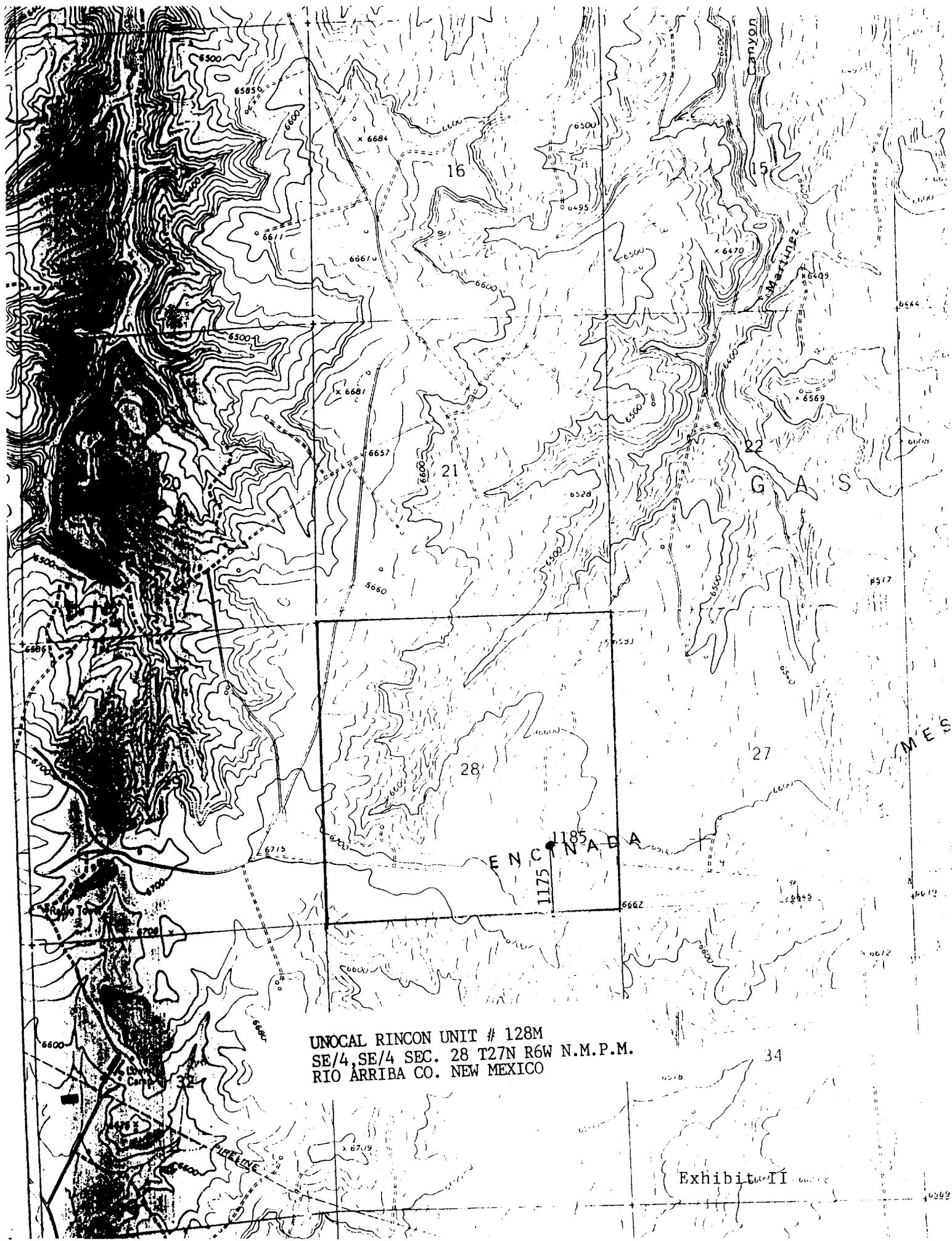
OIL CON. DIV.
DIST. 3

P.O. Box 2088

Santa Fe, New Mexico 87504-2088

All Distances must be from the outer boundaries of the section

UNOCAL		Lease		Well No.	
RINCON UNIT		#128M			
Section	Township	Range	County		
28	27N	6W	NMPM	RIO ARRIBA	
Actual Location of Well:					
feet from the SOUTH line and		1185	feet from the EAST line		
Producing Formation		Pool	Dedicated Acreage:		
Mesaverde / Dakota		Blanco / Basin	542 919.04		
Outline the acreage dedicated to the subject well by colored pencil or hatchure marks on the plat below.					
If more than one lease is dedicated to the well, outline each and identify the ownership thereof (both as to working interest and royalty).					
If more than one lease of different ownership is dedicated to the well, have the interest of all owners been consolidated by communization, unitization, force-pooling, etc.?					
<input checked="" type="checkbox"/> Yes <input type="checkbox"/> No If answer is "yes" type of consolidation Unitization					
If answer is "no", list the owners and tract descriptions which have actually been consolidated. (Use reverse side of this form if necessary).					
No acreage will be assigned to the well until all interests have been consolidated (by communization, unitization, forced-pooling, or otherwise) or until a non-standard unit, eliminating such interest, has been approved by the Division.					
				OPERATOR CERTIFICATION I hereby certify that the information contained herein is true and complete to the best of my knowledge and belief. Signature: Robert C. Frank Printed Name: Robert C. Frank Position: Agent Company: Union Oil Company of California Date: August 4, 1992	
				SURVEYOR CERTIFICATION I hereby certify that the well location shown on this plat was plotted from field notes, actual surveys made by me or under supervision, and that the same is true and correct to the best of my knowledge and belief. Date Surveyed: JUL 18 1992 Signature: Cecil L. Tullis Professional Land Surveyor Cecil L. Tullis	
1330 1650 1900 2310 2640 2000 1500 1000 500 0				Exhibit I	



UNOCAL RINCON UNIT # 128M
SE/4, SE/4 SEC. 28 T27N R6W N.M.P.M.
RIO ARRIBA CO. NEW MEXICO

Exhibit II