

Distribution O+5 (BLM); 1-Well File; 1-Crystal; 1-Earleen

Form 3160-3

(November 1983) 09R10-14634

(formerly 9-331C)

Prop - 13102

BD - 71599

UNITED STATES
DEPARTMENT OF THE INTERIOR
BUREAU OF LAND MANAGEMENT

SUBMIT IN TRIPPLICATE*

Form approved

(Other instruction on
reverse side)

Budget Bureau No. 1004-0136

Expires August 31, 1985

APPLICATION FOR PERMIT TO DRILL, DEEPEN, OR PLUG BACK

1a. TYPE OR WORK

DRILL ☒

DEEPEN ☐

PLUG BACK ☐

b. TYPE OF WORK

Oil

Well

☐

Gas

Well

☒

Other

SINGLE

ZONE

☒

MULTIPLE

ZONE

☐

2. NAME OF OPERATOR

Merrion Oil & Gas Corporation

3. ADDRESS OF OPERATOR

P. O. Box 840, Farmington, New Mexico 87499

4. LOCATION OF WELL (Report location clearly and in accordance with any State requirements)

At surface

800' FNL & 2030' FWL (NENW)

At proposed prod. zone

14. DISTANCE IN MILES AND DIRECTION FROM NEAREST TOWN OR POST OFFICE*

20 miles Southeast of Blanco, New Mexico

15. DISTANCE FROM PROPOSED*

LOCATION TO NEAREST
PROPERTY OR LEASE LINE, FT.

800'

(Also to nearest drlg, unit line, if any)

18. DISTANCE FROM PROPOSED LOCATION*

TO NEAREST WELL, DRILLED, COMPLETED,
OR APPLIED FOR, ON THIS LEASE, FT.

300'

21. ELEVATION OF PROPOSED WELL (Report elevation clearly and in accordance with any State requirements)

6683' GIP

23. PROPOSED CASING AND CEMENTING PROGRAM

SIZE OF HOLE	SIZE OF CASING	WEIGHT PER FOOT	SETTING DEPTH	QUANTITY OF CEMENT
12-1/4"	8-5/8" J-55	24#	240'	175 sx (206 cu.ft.)
7-7/8"	4-1/2" J-55	10.5# & 11.6#	7823'	1st Stge: 350 sx (427 cu.ft.) 2nd Stge: 305 sx (629 cf) + 50 sx (61 cf) 3rd Stge: 635 sx (1308 cf) + 50 sx (61 cf)

We propose to drill 12-1/4" surface hole to 240' and set 240' of 8-5/8", 24#, J-55 surface casing with 175 sx Class B (206 cuft) w/2% CaCl2. Will wait on cement 10 hrs, pressure test to 600 psi for 15 mins. Will drill 7-7/8" hole to 7823'. Will run open hole logs. If well appears productive, we will run 7823' of 4-1/2", 10.5# & 11.6#, J-55 casing and cement 1st Stage with 350 sx (427 cuft) Class H w/2% gel (yield 1.22 cuft/sx). Will circulate 3-4 hrs between stages. 2nd Stage tool in Mancos at \pm 5650'. Will cement with 305 sx (629 cuft) Class B, 2% Sodium Metasilicate (yield 2.06 cuft/sx), followed by 50 sx (61 cuft) Class H w/2% gel (yield 1.22 cuft/sx). Estimated top of cement @ 3400'. 3rd Stage tool below Pictured Cliffs @ 3350' KB. Will cement with 635 sx (1308 cuft) Class B w/2% Sodium Metasilicate (yield 2.06 cuft), followed by 50 sx (61 cuft) Class H w/2% gel (yield 1.22 cuft/sx). TOC estimate @ surface. We will perforate and stimulate as necessary to test the potentially productive intervals. Merrion owns rights below the Mesaverde formation.

IN ABOVE SPACE DESCRIBE PROPOSED PROGRAM: If proposal is to deepen or plug back, give data on present productive zone and proposed new productive zone. If proposal is to drill or deepen directionally, give pertinent data on subsurface locations and measured and true vertical depths. Give blowout preventer program, if any.

24.

Signed

Steven S. Dunn

TITLE Operations Manager

Date 10/7/93

(This space for Federal or State office use)

PERMIT NO

APPROVAL DATE

APPROVED BY

CONDITIONS OF APPROVAL, IF ANY:

TITLE

Date

APPROVED
AS AMENDED

NOV 15 1993

*See Instructions On Reverse Side

Title 18 U.S.C. Section 1001, makes it a crime for any person knowingly and willfully to make to any department or agency of the United States any false, fictitious or fraudulent statements or representations as to any matter within its jurisdiction.

Submit to Appropriate
District Office
State Lease - 4 copies
Fee Lease - 3 copies

State of New Mexico
Energy, Minerals and Natural Resources Department

Form C-102
Revised 1-1-89

OIL CONSERVATION DIVISION

P.O. Box 2088
Santa Fe, New Mexico 87504-2088

DISTRICT I

P.O. Box 1980, Hobbs, NM 88240

DISTRICT II

P.O. Drawer DD, Artesia, NM 88210

DISTRICT III

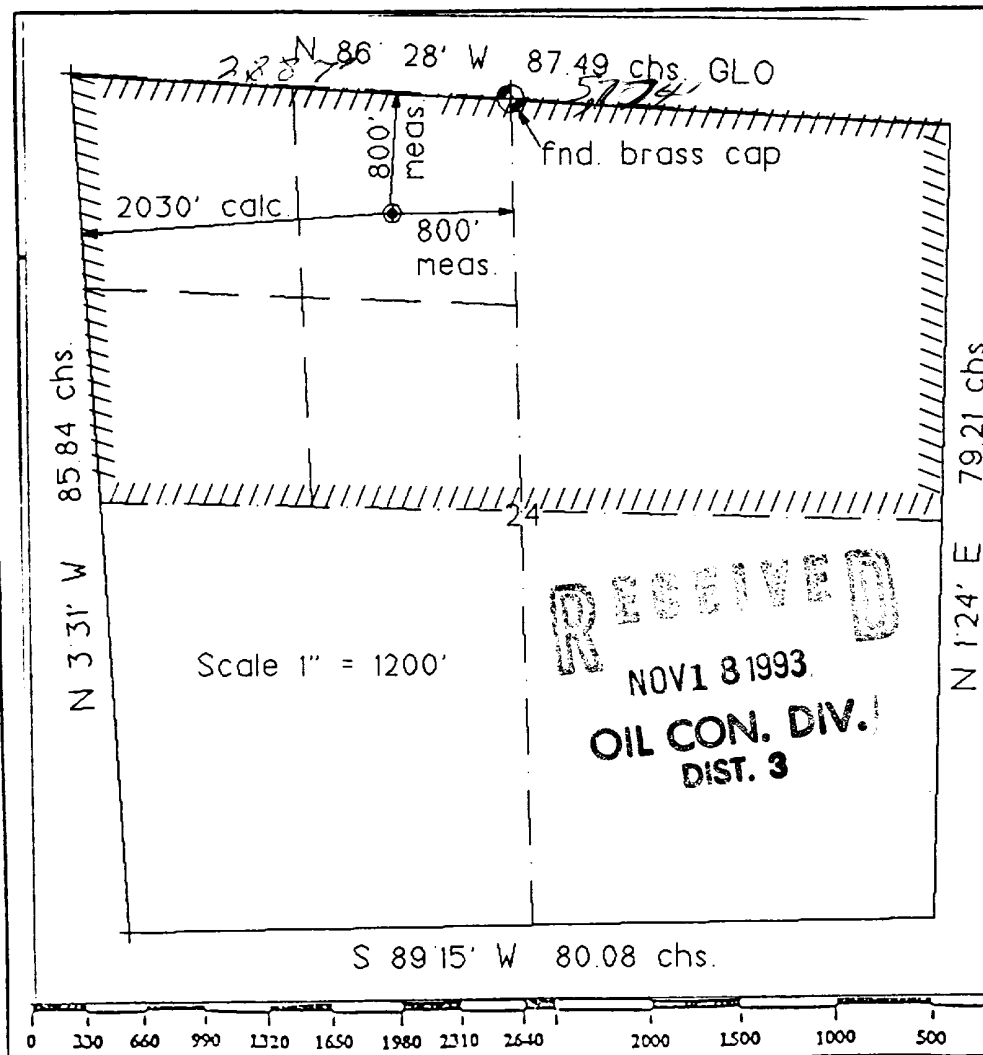
1000 Rio Brazos Rd., Aztec, NM 87410

WELL LOCATION AND ACREAGE DEDICATION PLAT

All Distances must be from the outer boundaries of the section

Operator MERRION O & G CORPORATION			Lease Shelby Federal Com		Well # 1 E
Unit Letter -3/C	Section 24	Township 27 N.	Range 7 W.	County RIO ARriba	
Actual Footage Location of Well: 800 feet from the NORTH line and 2030 feet from the WEST					
Ground level Elev. 6683'	Producing Formation Dakota		Pool Basin	Dedicated Acreage: 320 Acres	

1. Outline the acreage dedicated to the subject well by colored pencil or hatchure marks on the plat below.
2. If more than one lease is dedicated to the well, outline each and identify the ownership thereof (both as to working interest and royalty).
3. If more than one lease of different ownership is dedicated to the well, have the interest of all owners been consolidated by communitization, unitization, force-pooling, etc?
☒ Yes ☐ No If answer is "yes" type of consolidation FORCE POOLING
If answer is "no" list the owners and tract descriptions which have actually been consolidated. (Use reverse side of this form if necessary).
No allowable will be assigned to the well until all interests have been consolidated (by communitization, unitization, forced-pooling, or otherwise) or until a 800-standard unit, eliminating such interest, has been approved by the Division.



OPERATOR CERTIFICATION

I hereby certify that the information contained herein is true and complete to the best of my knowledge and belief.

Signature

Printed Name

Steven S. Dunn

Position

Operations Manager

Company

Merrion Oil & Gas Corp.

Date

10/07/93

SURVEYOR CERTIFICATION

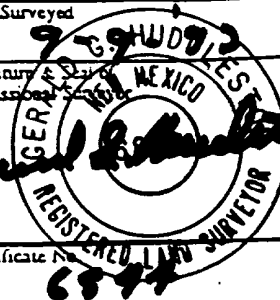
I hereby certify that the well location shown on this plat was plotted from field notes of actual surveys made by me or under my supervision, and that the same is true and correct to the best of my knowledge and belief.

Date Surveyed

Signature

Professional

Certificate No.



Merrion Oil & Gas Corporation

Wellbore Schematic

Shelby Federal Com No. 1E

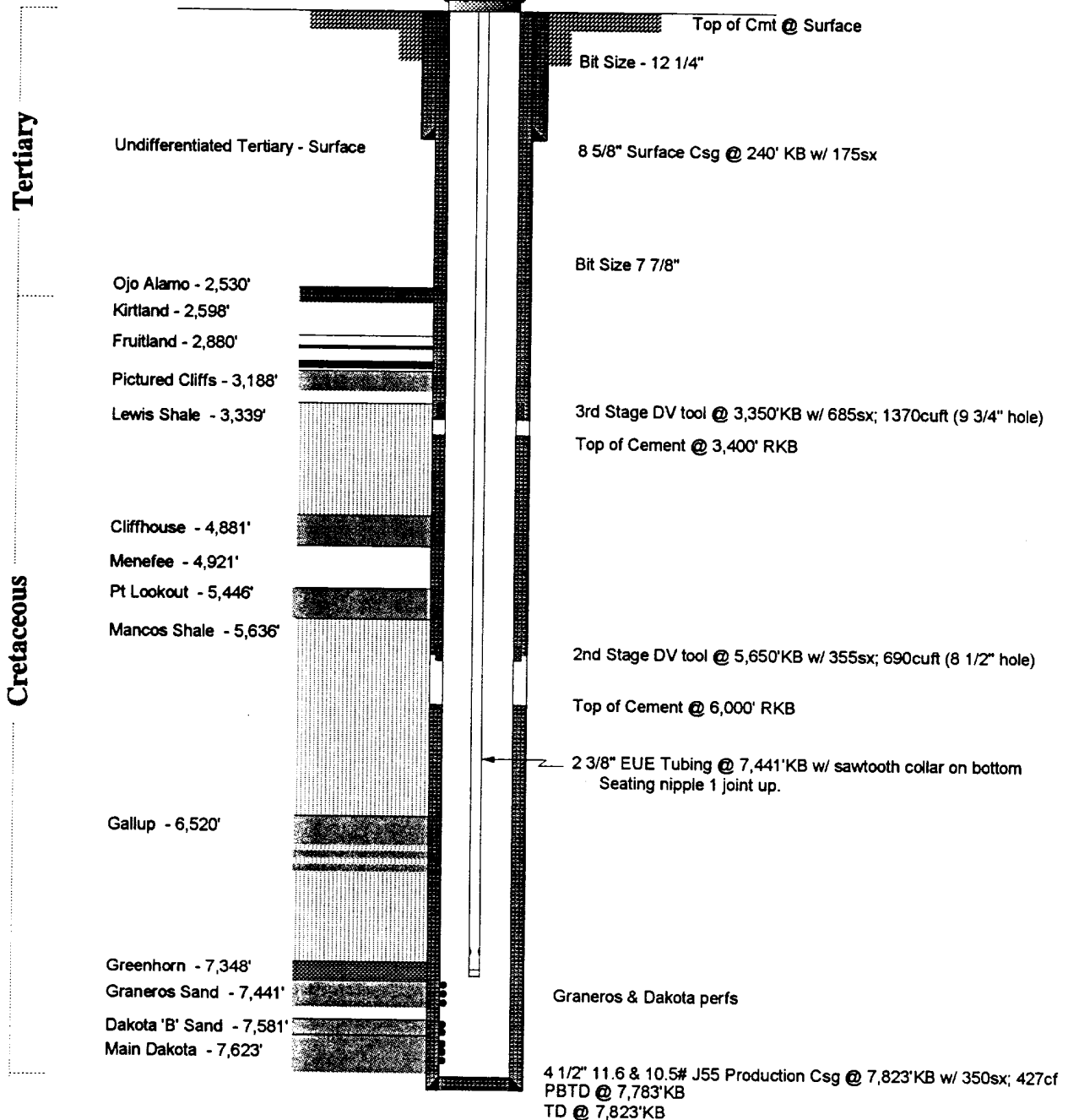
Proposed Wellbore Configuration

Location: 800' fnl & 2030' fwl (ne nw)
Sec 24, T27N, R7W
Rio Arriba Co, New Mexico

Elevation: 6683' GL
6696' RKB

By: Steve Dunn

10/05/93



Minimum Casing Design:

1. Top Section - 1,000ft of 11.6# ST&C
2. Middle Section - 6,100ft of 10.5# ST&C
3. Bottom Section - 723ft of 11.6# ST&C

