

UNITED STATES  
DEPARTMENT OF THE INTERIOR

BUREAU OF LAND MANAGEMENT

APPLICATION FOR PERMIT TO DRILL OR DEEPEN

1a. TYPE OF WORK

DRILL ☐

DEEPEN ☐

b. TYPE OF WELL  
OIL WELL ☐

GAS WELL ☒

OTHER

SINGLE ZONE

MULTIPLE ZONE

2. NAME OF OPERATOR

Amoco Production Company

Attention:

Julie L. Acevedo

3. ADDRESS AND TELEPHONE NO.

P.O. Box 800, Denver, Colorado 80201

4. LOCATION OF WELL (Report location clearly and in accordance with any State requirements.)

At surface

870 FSL

1480FEL

At proposed prod. zone

14. DISTANCE IN MILES AND DIRECTION FROM NEAREST TOWN OR POST OFFICE

4.5 miles from Afton, NM.

15. DISTANCE FROM PROPOSED\*  
LOCATION TO NEAREST  
PROPERTY OR LEASE LINE, FT.  
(Also to nearest drlg. unit line, if any)

16. NO. OF ACRES IN LEASE

639.2

17. NO. OF ACRES ASSIGNED  
TO THIS WELL

320 E/2 319.40

18. DISTANCE FROM PROPOSED LOCATION\*  
TO NEAREST WELL, DRILLING, COMPLETED,  
OR APPLIED FOR, ON THIS LEASE, FT.

19. PROPOSED DEPTH

7594'

20. ROTARY OR CABLE TOOLS

Rotary

21. ELEVATIONS (Show whether DF, RT, GR., etc.)

6522' GR. This action is subject to technical and procedural review pursuant to 43 CFR 3165.3 and appeal pursuant to 43 CFR 3165.4

22. APPROX. DATE WORK WILL START

3-24-94

23. PROPOSED CASING AND CEMENTING PROGRAM

DRILLING OPERATIONS AUTHORIZED ARE  
SUBJECT TO COMPLIANCE WITH ATTACHED  
"GENERAL REQUIREMENTS"

SIZE OF HOLE	GRADE, SIZE OF CASING	WEIGHT PER FOOT	SETTING DEPTH	QUANTITY OF CEMENT
14 3/4"	11 3/4"	47#	250'	245 cf CI B W/2% CaCl2 (Cement to surface)
11.00"	8 5/8"	24#	3487'	1954 cf CI B (Cement to surface)
7 7/8"	5 1/2"	15.5#	7694'	1244 cf CL B (Cmt to surface)

Notice of Staking was submitted on 2/24/94.

Lease Description: T27N-R7W

Sec. 1: Lots 1,2,3,4, S/2N/2, S/2 all.

RECEIVED  
MAR 31 1994

OIL CON. DIV.  
DIST. 3

RECEIVED  
APR 26 1994

OIL CON. DIV.  
DIST. 3

IN ABOVE SPACE DESCRIBE PROPOSED PROGRAM. If proposal is to deepen, give data on present productive zone and proposed new productive zone. If proposal is to drill or deepen directionally, give pertinent data on subsurface locations and measured and true vertical depths. Give blowout preventer program, if any.

24.

SIGNED

*[Signature]*

TITLE Sr. Staff Assistant

DATE

02-24-1994

(This space for Federal use only)

PERMIT NO.

APPROVAL DATE

Application approval does not warrant or certify that the applicant has legal or equitable title to those rights in the subject lease which would entitle the applicant to conduct operations thereon.  
CONDITIONS OF APPROVAL, IF ANY:

APPROVED BY

TITLE

NMOC

\*See Instructions On Reverse Side

APPROVED  
AS AMENDED

MAR 28 1994

DISTRICT MANAGER

Title 18 U.S.C. Section 1001, makes it a crime for any person knowingly and willfully to make to any department or agency of the United States any false, fictitious or fraudulent statements or representations as to any matter within its jurisdiction.

[illegible]

1. *Chlorophyll a* (Chl *a*)

**Keywords:** child sexual abuse; disclosure; self-blame; social support

Submit to Appropriate  
District Office  
State Lease - 4 copies  
Fee Lease - 3 copies

State of New Mexico  
Energy, Minerals and Natural Resources Department

Form C-102  
Revised 1-1-89

OIL CONSERVATION DIVISION

P.O. Box 2088  
Santa Fe, New Mexico 87504-2088

DISTRICT I  
P.O. Box 1980, Hobbs, NM 88240

DISTRICT II  
P.O. Drawer DD, Artesia, NM 88210

DISTRICT III  
1000 Rio Brazos Rd., Aztec, NM 87410

WELL LOCATION AND ACREAGE DEDICATION PLAT  
All Distances must be from the outer boundaries of the section

RECEIVED  
BLM  
MAR -2 PM 12:51

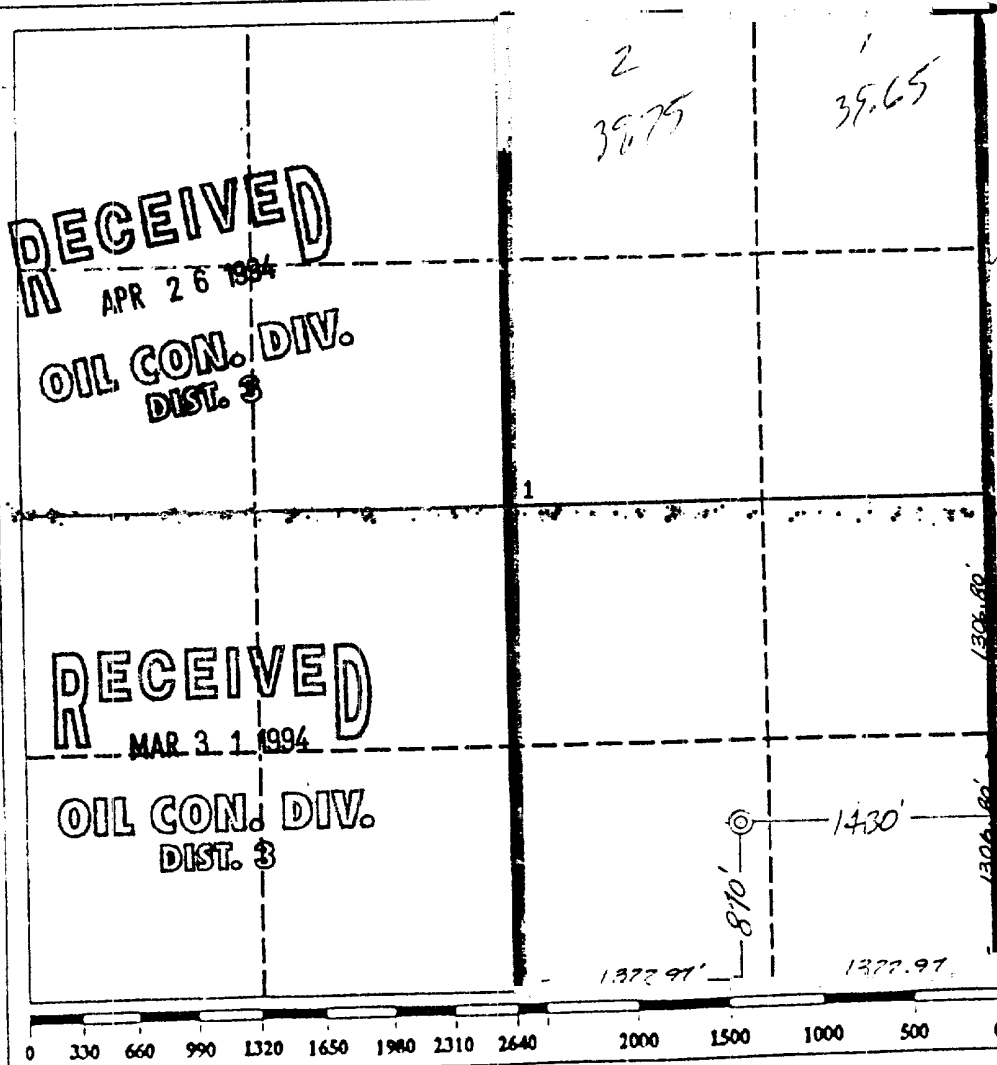
070 FARMINGTON, NM

Operator <b>AMOCO PRODUCTION COMPANY</b>			Lease <b>San Juan 28-7</b>		Well No. <b>#183M</b>
Unit Letter <b>0</b>	Section <b>1</b>	Township <b>27 NORTH</b>	Range <b>7 WEST</b>	County <b>NMPM</b>	<b>RIO ARRIBA</b>
Actual Footage Location of Well: <b>870</b> feet from the <b>SOUTH</b> line and <b>1480</b> feet from the <b>EAST</b> line					
Ground level Elev. <b>6522</b>	Producing Formation <b>Basin Dakota</b>		Pool <b>Basin Dakota</b>		Dedicated Acreage <b>1/2 320 319.40 Acres</b>

- Outline the acreage dedicated to the subject well by colored pencil or hatchure marks on the plat below.
- If more than one lease is dedicated to the well, outline each and identify the ownership thereof (both as to working interest and royalty).
- If more than one lease of different ownership is dedicated to the well, have the interest of all owners been consolidated by communitization, unitization, force-pooling, etc.?  
☐ Yes ☐ No If answer is "yes" type of consolidation \_\_\_\_\_  
If answer is "no" list the owners and tract descriptions which have actually been consolidated. (Use reverse side of this form if necessary.)  
No allowable will be assigned to the well until all interests have been consolidated (by communitization, unitization, forced-pooling, or otherwise) or until a non-standard unit, eliminating such interest, has been approved by the Division.

RECEIVED  
APR 26 1994  
OIL CON. DIV.  
DIST. 3

RECEIVED  
MAR 31 1994  
OIL CON. DIV.  
DIST. 3



OPERATOR CERTIFICATION

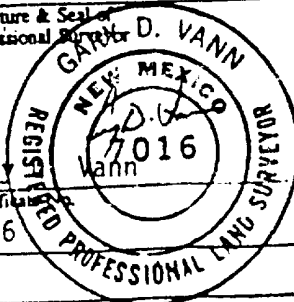
I hereby certify that the information contained herein is true and complete to the best of my knowledge and belief.

Signature  
*Julie L. Acevedo*  
Printed Name  
**Julie L. Acevedo**  
Position  
**Senior Staff Assistant**  
Company  
**Amoco Production Company**  
Date  
**February 24, 1994**

SURVEYOR CERTIFICATION

I hereby certify that the well location shown on this plat was plotted from field notes of actual surveys made by me or under my supervision, and that the same is true and correct to the best of my knowledge and belief.

Date Surveyed  
**October 26, 1993**  
Signature & Seal of Professional Surveyor  
**GARY D. VANN**  
Certification No.  
**7016**



Submit to Appropriate  
District Office  
State Lease - 4 copies  
Fee Lease - 3 copies

State of New Mexico  
Energy, Minerals and Natural Resources Department

Form C-102  
Revised 1-1-89

OIL CONSERVATION DIVISION

P.O. Box 2088  
Santa Fe, New Mexico 87504-2088

RECEIVED

DISTRICT I  
P.O. Box 1980, Hobbs, NM 88240

DISTRICT II  
P.O. Drawer DD, Artesia, NM 88210

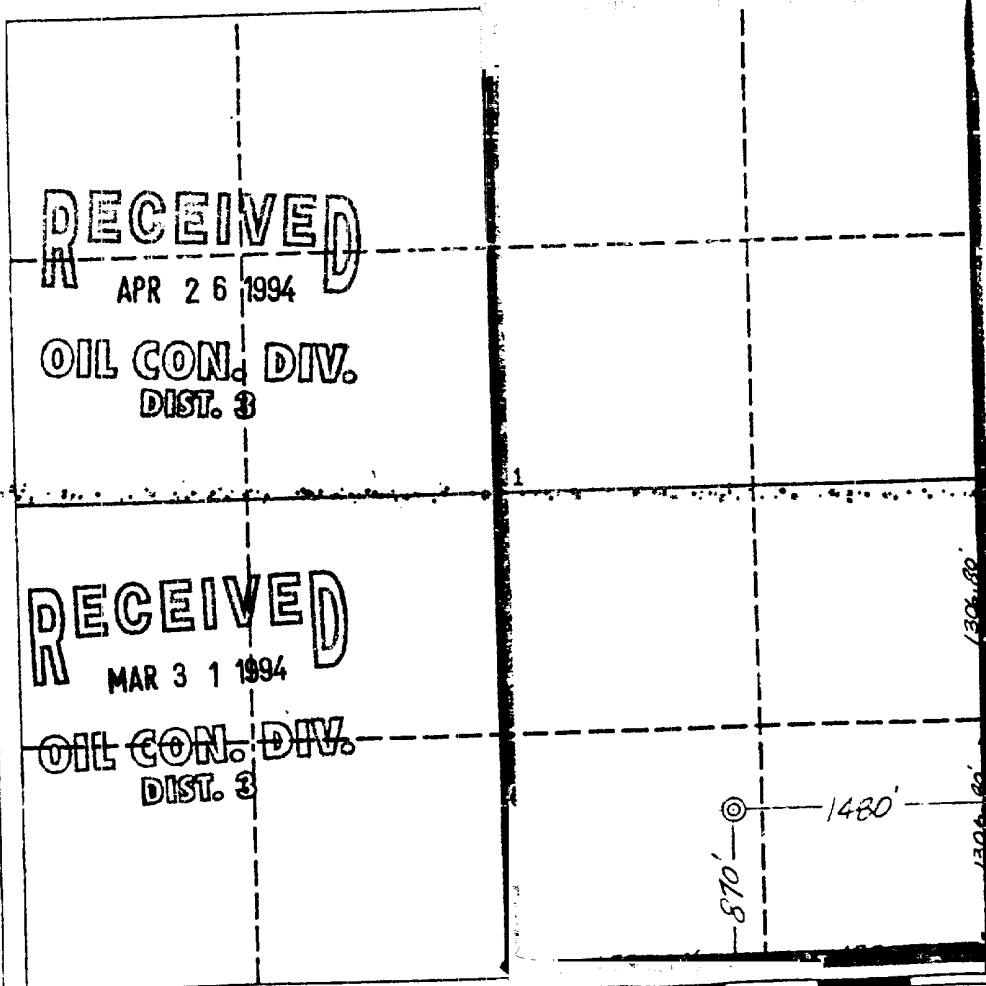
DISTRICT III  
1000 Rio Brazos Rd., Aztec, NM 87410

WELL LOCATION AND ACREAGE DEDICATION PLAT  
All Distances must be from the outer boundaries of the section

MAR 0 1994

Operator <b>AMOCO PRODUCTION COMPANY</b>			Lease <b>San Juan 28-7</b>		BUREAU OF LAND MANAGEMENT FARMINGTON RESOURCE ROOM	Well No. <b>1505102M</b>
Unit Letter <b>0</b>	Section <b>1</b>	Township <b>27 NORTH</b>	Range <b>7 WEST</b>	NMPM	County <b>RIO ARriba</b>	
Actual Footage Location of Well: <b>870</b> feet from the <b>SOUTH</b> line and <b>1480</b> feet from the <b>EAST</b> line						
Ground level Elev. <b>6522</b>	Producing Formation <b>Mesaverde</b>		Pool <b>Blanco Mesaverde</b>		Dedicated Acreage <b>319.40</b> Acres	

- Outline the acreage dedicated to the subject well by colored pencil or hatchure marks on the plat below.
- If more than one lease is dedicated to the well, outline each and identify the ownership thereof (both as to working interest and royalty).
- If more than one lease of different ownership is dedicated to the well, have the interest of all owners been consolidated by communitization, unitization, force-pooling, etc.?  
☐ Yes ☐ No If answer is "yes" type of consolidation \_\_\_\_\_  
If answer is "no" list the owners and tract descriptions which have actually been consolidated. (Use reverse side of this form if necessary.)  
No allowable will be assigned to the well until all interests have been consolidated (by communitization, unitization, forced-pooling, or otherwise) or until a non-standard unit, eliminating such interest, has been approved by the Division.



OPERATOR CERTIFICATION

I hereby certify that the information contained herein is true and complete to the best of my knowledge and belief.

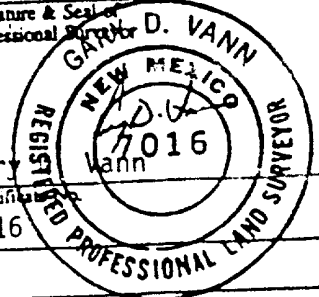
Signature  
*Julie L. Acevedo*  
Printed Name  
**Julie L. Acevedo**  
Position  
**Senior Staff Assistant**  
Company  
**Amoco Production Company**  
Date  
**February 24, 1994**

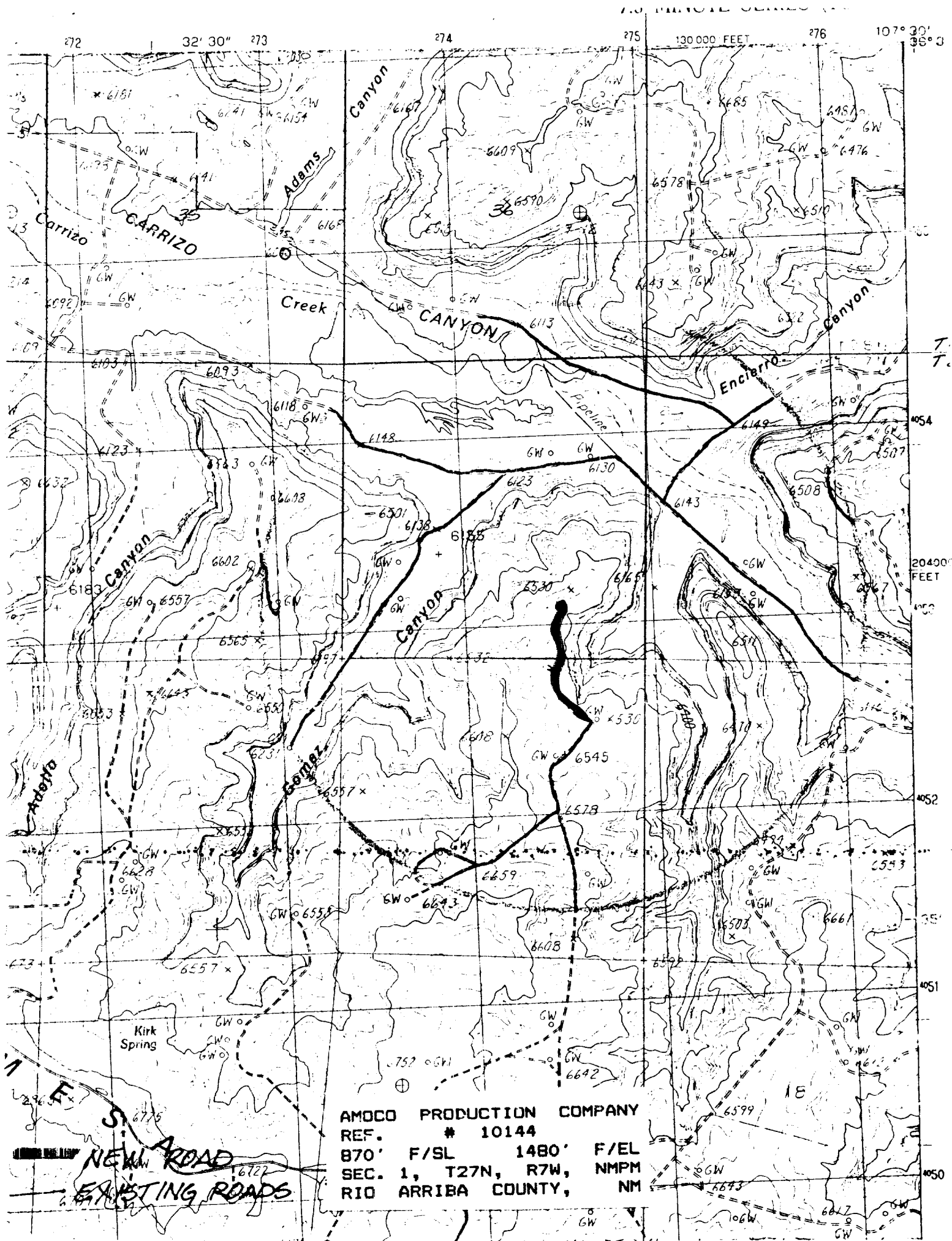
SURVEYOR CERTIFICATION

I hereby certify that the well location shown on this plat was plotted from field notes or actual surveys made by me or under my supervision, and that the same is true and correct to the best of my knowledge and belief.

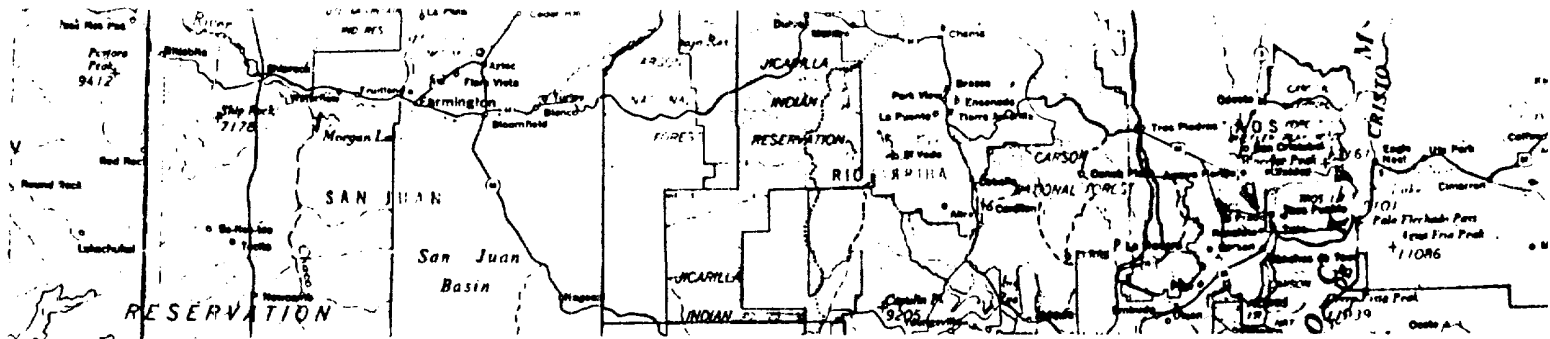
Date Surveyed  
**October 26, 1993**

Signature & Seal of Professional Surveyor  
**GARY D. VANN**  
7016  
7016









REF. # 10144  
 B70' F/SL 1480' F/EL  
 SEC. 1, T27N, R7W, NMPM  
 RAIL POINT: 188 miles from Farmington, N.M.  
 MUD POINT: 45 miles from Clayton, N.M.  
 CEMENT POINT: 78 miles from Farmington, N.M.

