

ENERGY, MINERALS AND NATURAL RESOURCES DEPARTMENT

OIL CONSERVATION DIVISION

DRUG FREE

APPROVED
DATE
APPROVED
DATE

RECEIVED
MAY - 2 1994
OIL CON. DIV.
DIST. 3

April 19, 1994

Unior. Oil Company of California (UNOCAL)
P.O. Box 2620
Casper, WY 82602-2620

Attention: Jim Benson

Administrative Order NSL-3376

Dear Ms.r. Benson:

Reference is made to your application dated February 16, 1994 for an unorthodox gas well location for both the Basin-Dakota and Undesignated Largo-Gallup Pools for your proposed Rincon Unit Well No. 229E. Said well is to be drilled 660 feet from the South line and 1190 feet from the West line (Unit M) of Section 34, Township 27 North, Range 7 West, NMPM Rio Arriba County, New Mexico.

The S/2 of said Section 34 is to be dedicated to said well forming a standard 320-acre gas spacing and proration unit for both pools.

By the authority granted me under the provisions of Rule 2(c) of the Special Rules and Regulations for the Basin-Dakota Pool, as promulgated by Division Order No. R-8170, as amended; the applicable rules governing the Largo-Gallup Pool under Division Order No. R-2462, as amended; and General Rule 104.F(1), the aforementioned unorthodox gas well location is hereby approved.

Sincerely,

William J. LeMay
Director

WJL/MES/amg

cc: Oil Conservation Division - Aztec
US Bureau of Land Management - Farmington

RECEIVED
MAY - 2 1994
OIL CON. DIV.
DIST. 3

Ernie Busch

From: Ernie Busch
To: Mike Stogner
Subject: UNOCAL (NSL)
Date: Monday, March 07, 1994 8:43AM
Priority: High

WELL NAME: RINCON UNIT # 229E
LOCATION: M-34-27N-07W
FOOTAGE: 660' FSL; 1190' FWL
RECOMMEND: APPROVAL

Control Number: 023422

POINT OF DISPOSITION AND WELL COMPLETION INFORMATION

OGRID: 021042 Operator Name: SNYDER OIL CORP NW

1625 BROADWAY ST SU 2200 DENVER

CO 80202

C-115 Filer Contact Name: _____

Phone: () _____

FAX: () _____

POD: 2298510 Product Type: OIL Facility Type: 03 Location: C 05 26N 03W County RIO ARRIBA

OGRID Name

OGRID Name

Authorized Transporter(s): 009018 GIANT REFINERY

Description of POD (40 characters or less): _____

POD: 2298530 Product Type: GAS Facility Type: 01 Location: C 05 26N 03W County RIO ARRIBA

OGRID Name

OGRID Name

Authorized Transporter(s): 016191 NORTHWEST PIPELINE CORP.

Description of POD (40 characters or less): _____

POD: 2298550 Product Type: WATER Facility Type: 05 Location: C 05 26N 03W County RIO ARRIBA

Description of POD (40 characters or less): _____

WELL COMPLETIONS

Code Pool Name

Code Producing Property Name

API Well No.

Location

Well

72319 BLANCO MESAVERDE (PRORATED GAS)

0710295 TRIBAL C

30-039-21497 C 05 26N 03W 005A

Unocal Oil & Gas Division
Unocal Corporation
900 Werner Court, P.O. Box 2620
Casper, Wyoming 82602-2620
Telephone (307) 234-1563

UNOCAL 76

February 16, 1994

State of New Mexico
Oil Conservation Division
310 Old Santa Fe Trail
Santa Fe, New Mexico 87503

RECEIVED

FEB 22 1994

OIL CON. DIV. I
DIST. 3

Gentlemen:

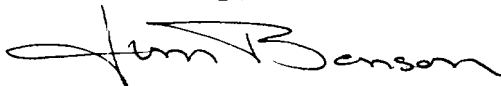
Union Oil Company of California (UNOCAL) requests permission for a nonstandard location for our Rincon Unit No. 229E well, located 660' FSL & 1190' FWL, Section 34, T27N, R7W, Rio Arriba County, New Mexico.

This well is a proposed dual Basin Dakota/Largo Gallup well that does not conform, as staked, to a "standard" location being approximately 130' too close to the south line. It is not feasible to move the location further to the north because of existing archeological sites and the surrounding topography. See attachments.

The offset lease owner, Central Resources, Inc., has been contacted by certified letter requesting waiver of objection to this proposed unorthodox location.

If you have any questions, please contact me at (307) 234-1563, ext. 116. Thank you for your help in this matter.

Sincerely,

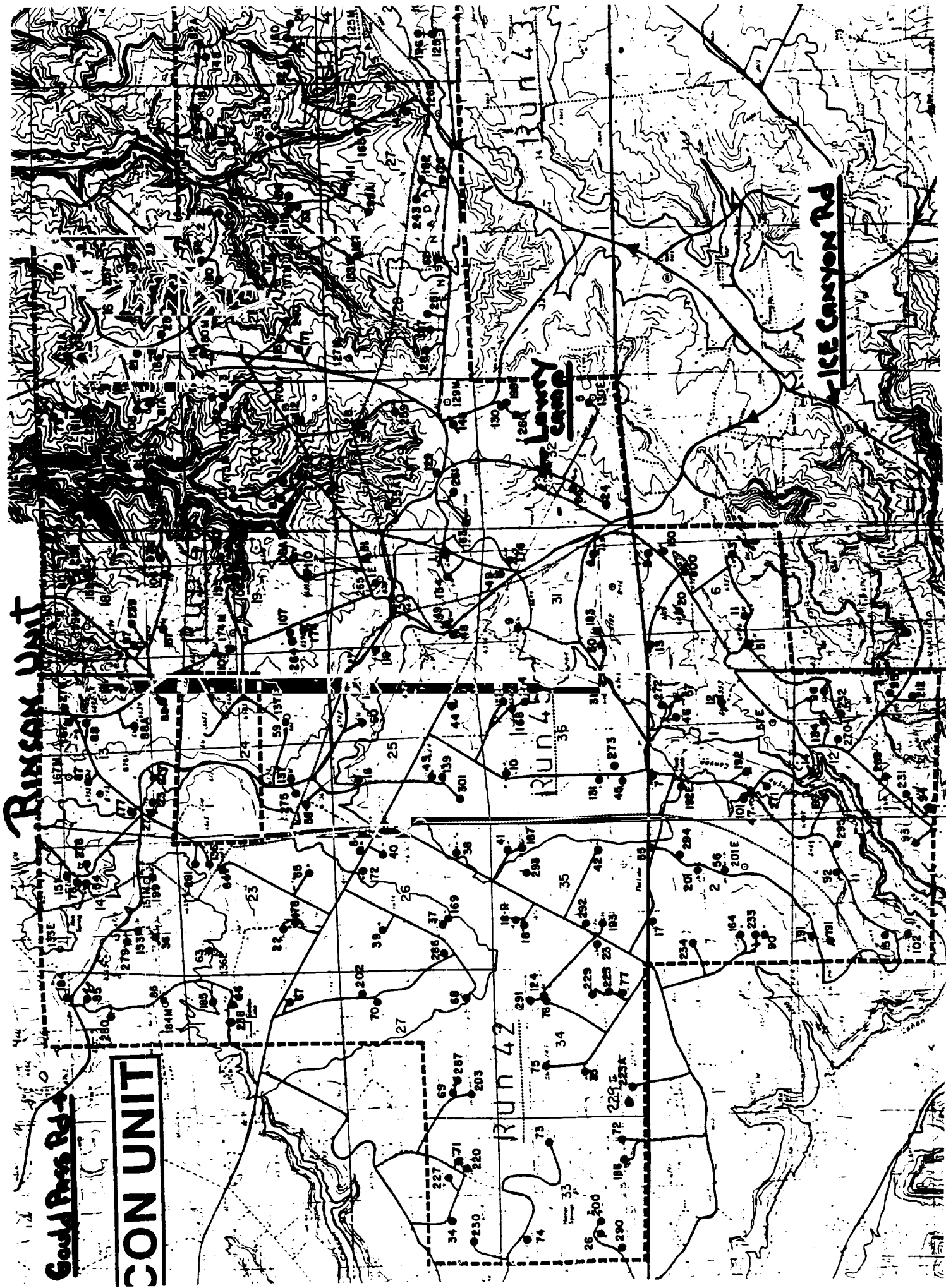


Jim Benson
Drilling Superintendent

✓ Attachments

cc: Ernie Busch, Aztec, NM

JBB:co



CON UNIT

Rixson Unit

Lacey Camp

ICE Canyon Rd

Run 42

Run 43

Run 44

Run 45

Run 46

Run 47

Run 48

Run 49

Run 50

Run 51

Run 52

Run 53

Run 54

Run 55

Run 56

Run 57

Run 58

Run 59

Run 60

Run 61

Run 62

Run 63

Run 64

Run 65

Run 66

Run 67

Run 68

Run 69

Run 70

Run 71

Run 72

Run 73

Run 74

Run 75

Run 76

Run 77

Run 78

Run 79

Run 80

Run 81

Run 82

Run 83

Run 84

Run 85

Run 86

Run 87

Run 88

Run 89

Run 90

Run 91

Run 92

Run 93

Run 94

Run 95

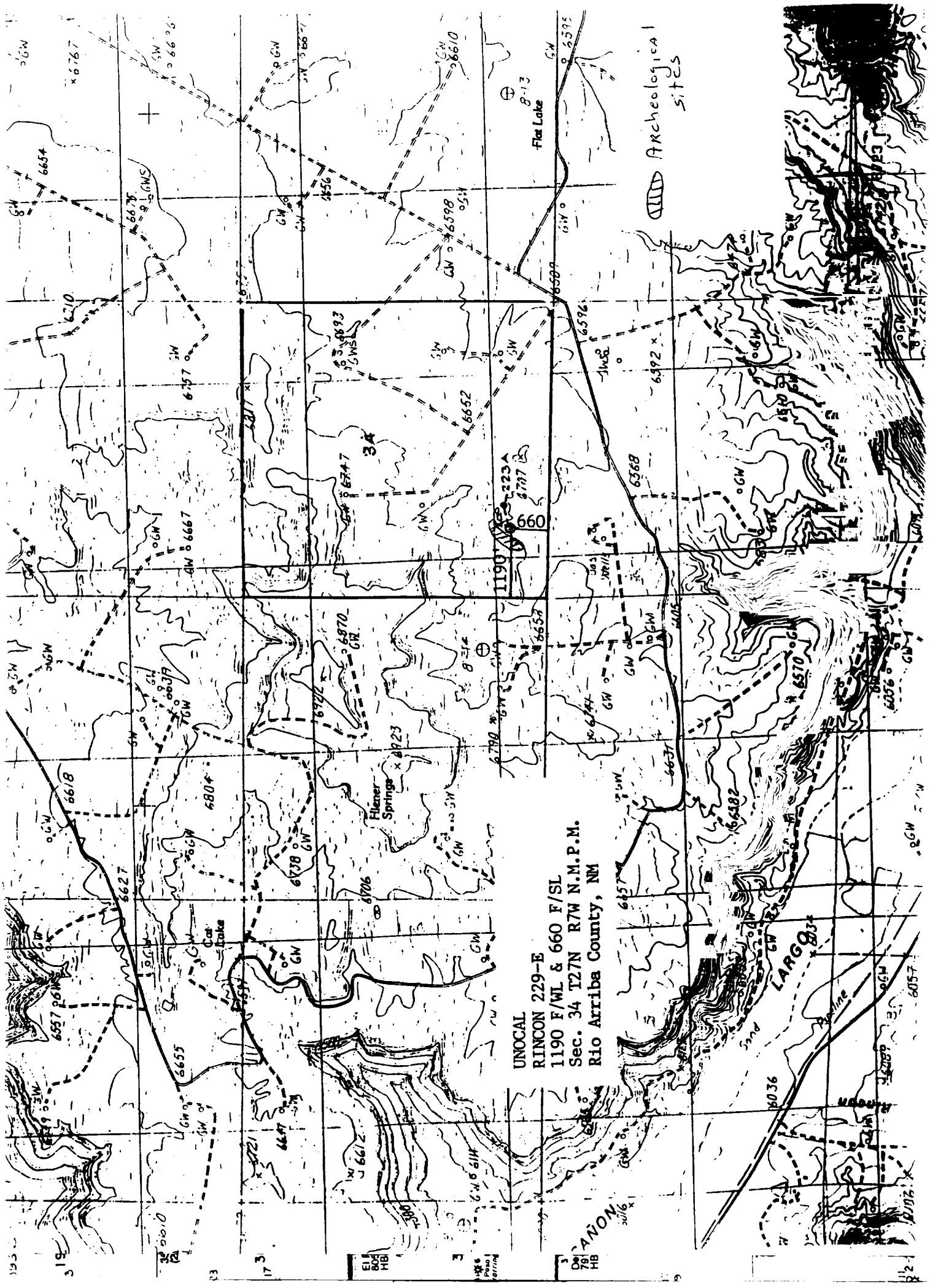
Run 96

Run 97

Run 98

Run 99

Run 100



UNOCAL
RINCON 229-E
1190 F/WL & 660 F/SL
Sec. 34 T27N R7W N.M.P.M.
Rio Arriba County, NM

Archeological sites

ANON

Contour Int. = 1'

RINCON 229-E
1190 F/WL & 660 F/SL
Sec. 34 T27N R7W N.M.P.M.
Rio Arriba County, NM

NOTE: FINISH ELEV. 6596

PAD LAYOUT AND TOPOGRAPHY

