

UNITED STATES  
DEPARTMENT OF THE INTERIOR  
BUREAU OF LAND MANAGEMENT

## APPLICATION FOR PERMIT TO DRILL OR DEEPEN

## 1a. TYPE OF WORK

DRILL ☒DEEPEN ☐

## b. TYPE OF WELL

OIL  
WELL ☐GAS  
WELL ☒

OTHER

SINGLE  
ZONE ☒MULTIPLE  
ZONE ☐

## 2. NAME OF OPERATOR

Conoco Inc. 5073

## a. ADDRESS AND TELEPHONE NO

10 Desta Dr. Ste 100W, Midland, Tx. 79705-4500 (915) 686-6548

## 4. LOCATION OF WELL (Report location clearly and in accordance with any State requirements \*)

At surface

870 FSL &amp; 1480 FEL

At proposed prod. zone

870 FSL &amp; 1480 FEL

## 14. DISTANCE IN MILES AND DIRECTION FROM NEAREST TOWN OR POST OFFICE\*

## 5. LEASE DESIGNATION AND SERIAL NO

SF 079321A

## 6 IF INDIAN, ALLOTTEE OR TRIBE NAME

## 7 UNIT AGREEMENT NAME

San Juan 28-7

## 8. FARM OR LEASE NAME WELL NO

183M

## 9. API WELL NO

30-039-25660

## 10. FIELD AND POOL, OR WILDCAT

Blanco MV / Basin Dakota

11. SEC. T. R. M. OR BLK.  
AND SURVEY OR AREA

0-1 - T27N - R7W

## 12 COUNTY OR PARISH

Rio Arriba

## 13. STATE

NM

## 5. DISTANCE FROM PROPOSED\*

LOCATION TO NEAREST  
PROPERTY OR LEASE LINE, FT.  
(Also to nearest drlg. unit line, if Any)

## 16 NO OF ACRES IN LEASE

17. NO. OF ACRES ASSIGNED  
TO THIS WELL

319.4

8. DISTANCE FROM PROPOSED LOCATION\*  
TO NEAREST WELL, DRILLING, COMPLETED,  
OR APPLIED FOR, ON THIS LEASE, FT.

## 19. PROPOSED DEPTH

7964'

## 20. ROTARY OR CABLE TOOLS

Rotary

## 24. ELEVATIONS (Show whether DF, RT, GR, etc.)

This action is subject to technical and  
procedural review pursuant to 43 CFR 3165.3  
and appeal pursuant to 43 CFR 3165.4.

6522 GR

## DRILLING OPERATIONS AUTHORIZED ARE APPROX. DATE WORK WILL START\*

SUBJECT TO COMPLIANCE WITH ATTACHED

4/1/97

## "GENERAL REQUIREMENTS"

## PROPOSED CASING AND CEMENTING PROGRAM

SIZE OF HOLE	GRADE, SIZE OF CASING	WEIGHT PER FOOT	SETTING DEPTH	QUANTITY OF CEMENT
12-1/4"	K-55 9-5/8"	#36	250'	215 sxs, circ.
8-3/4"	K-55 7"	#23	3470'	420 sxs, circ.
6-1/4"	K-55 4-1/2"	#11.6	7964'	600 sxs, toc @ 2400'

It is proposed to drill a vertical wellbore to be downhole commingled in the Blanco Mesaverde and Basin Dakota Pools following the acquisition of sufficient production test data for allocation purposes. A downhole commingling application has been filed with the BLM and OCD. An NOS was filed 1994. The well will be drilled and equipped according to the following additional attachments:

1. Well Location & Acreage Dedication Plat (C-102).
2. Proposed Well Plan Outline.
3. Cementing Plan.
4. Blowout Preventer Hookup.
5. Surface Use Plan with Production Facility layout.
6. Pipeline Tie Specifications.

This application includes ROW's for the well pad, access road, and pipeline.

RECEIVED  
MAR 31 1997OIL CON. DIV.  
DIST. 3OIL CON. DIV. NM  
MAR 10 PM 2:47  
RECEIVED

IN ABOVE SPACE DESCRIBE PROPOSED PROGRAM: If proposal is to deepen give data on present productive zone and proposed new productive zone. If proposal is to drill or deepen directionally, give pertinent data on subsurface locations and measured and true vertical depths. Give blowout preventer program, if any.

24.

SIGNED

TITLE

Jerry W. Hoover

Sr. Conservation Coordinator

DATE

3/5/97

(This space for Federal or State office use)

MAR 26 1997

PERMIT NO

APPROVAL DATE

Application approval does not warrant or certify that the applicant holds legal or equitable title to those rights in the subject lease which would entitle the applicant to conduct operations thereon.

CONDITIONS OF APPROVAL, IF ANY:

APPROVED BY

TITLE

DATE

MAR 26 1997

\*See Instructions On Reverse Side

Title 18 U.S.C. Section 1001, makes it a crime for any person knowingly and willfully to make to any department or agency of the United States any false, fictitious or fraudulent statements or representations as to any matter within its jurisdiction.

NMOCD

District I  
PO Box 1980, Hobbs, NM 88241-1980  
District II  
PO Drawer DD, Artesia, NM 88211-0719  
District III  
1000 Rio Huerfano Rd., Aztec, NM 87410  
District IV  
PO Box 2088, Santa Fe, NM 87504-2088

State of New Mexico  
Energy, Minerals & Natural Resources Department

OIL CONSERVATION DIVISION  
PO Box 2088  
Santa Fe, NM 87504-2088

Form C-102  
Revised February 21, 1994  
Instructions on back  
Submit to Appropriate District Office  
State Lease - 4 Copies  
Fee Lease - 3 Copies

RECEIVED  
MAR 10 PM 2:47  
670 FARINGTON, NM ☐ AMENDED REPORT

WELL LOCATION AND ACREAGE DEDICATION PLAT

1 API Number <u>30-039-25660</u>		2 Pool Code <u>72319 / 71599</u>		3 Pool Name <u>Blanco Mesa Verde / Basin Dakota</u>	
4 Property Code <u>16608</u>		5 Property Name <u>San Juan 28 - 7</u>			6 Well Number <u>#183M</u>
7 OGRID No. <u>005073</u>		8 Operator Name <u>Conoco, Inc.</u>			9 Elevation <u>6522'</u>

10 Surface Location

UL or lot no.	Section	Township	Range	Lot Idn	Feet from the	North/South line	Feet from the	East/West line	County
<u>0</u>	<u>1</u>	<u>27</u>	<u>7</u>		<u>870'</u>	<u>South</u>	<u>1480'</u>	<u>East</u>	<u>RA</u>

11 Bottom Hole Location If Different From Surface

UL or lot no.	Section	Township	Range	Lot Idn	Feet from the	North/South line	Feet from the	East/West line	County

12 Dedicated Acreage <u>E/2 319.4</u>	13 Joint or Infill	14 Consolidation Code	15 Order No.
--	--------------------	-----------------------	--------------

NO ALLOWABLE WILL BE ASSIGNED TO THIS COMPLETION UNTIL ALL INTERESTS HAVE BEEN CONSOLIDATED  
OR A NON-STANDARD UNIT HAS BEEN APPROVED BY THE DIVISION

16		5293'		<div>RECEIVED MAR 3 1997 OIL CON. DIV. DIST. 3 34</div>		17 OPERATOR CERTIFICATION I hereby certify that the information contained herein is true and complete to the best of my knowledge and belief  <u>Jerry W. Hoover</u> Signature <u>Jerry W. Hoover</u> Printed Name <u>Sr. Conservation Coord.</u> Title <u>3/5/97</u> Date	
5093'		Sec. 1				18 SURVEYOR CERTIFICATION I hereby certify that the well location shown on this plat was plotted from field notes of actual surveys made by me or under my supervision, and that the same is true and correct to the best of my belief.  Date of Survey Signature and Seal of Professional Surveyor:	
		5292'				Certificate Number	

# PROPOSED WELL PLAN OUTLINE

EST. GL = +6522'

EST. KB = +6535'

WELL NAME: **SJ 28-7 UNIT No. 183M**

LOCATION: **SEC 1, UNIT O, T-27N, R-7W, RIO ARRIBA CO., NM**

TVD IN 1000'	MD	FORMATION TOPS & TYPE	DRILLING PROBLEMS	TYPE OF FORMATION EVALUATION	HOLE SIZE	CASING SIZE DEPTH	FRAC GRAD	FORMATION PRESSURE GRADIENT	MUD WT TYPE	DAYS
0					12-1/4"	9-5/8" 36# K-55 ST&C @ 250'		NORMAL	8.4 - 8.8# SPUD MUD	1
					8-3/4"	CIRC CMT		8.4 - 9.4#	8.4 - 9.4# GEL/WATER	
1										
2		OJAM @ 2378' KRLD @ 2528'	POSSIBLE WATER FLOW							
		FRLD @ 2780'	POSSIBLE GAS FLOW POSSIBLE LOST RETURNS							
3		PCCF @ 3170' LEWS @ 3335'			8-3/4"	7" 23# K-55 LTC @ 3470'(special drift)		8.4 - 9.4#		5
4		CHRA @ 4115'		MUDLOG F/INT. CSG. PT.	6-1/4"	CIRC CMT			AIR/AIR MIST	
5		CLFH/MV @ 4840' MENF @ 4549'	PROBABLE LOST RETURNS IF FLUID IN HOLE							
		PTLK @ 5393'								
6		MNCS @ 5803'								
		GLLP @ 6580'								
7		GRHN @ 7326' GRRS DKOT @ 7390' TWLS @ 7428' FAGU @ 7547'	POSSIBLE WATERFLOW POSSIBLE OVERPRESSURE IN DEEP DAKOTA	CASED HOLE LOGS	6-1/4"	4-1/2" 11.6# LTC K55 and 10.5# STC K55 @ 7964'		BHP = 2500 psi BHT = 175 deg F	AIR/AIR MIST	10
8		T.D. @ 7964'				TOC 2400'				

DATE

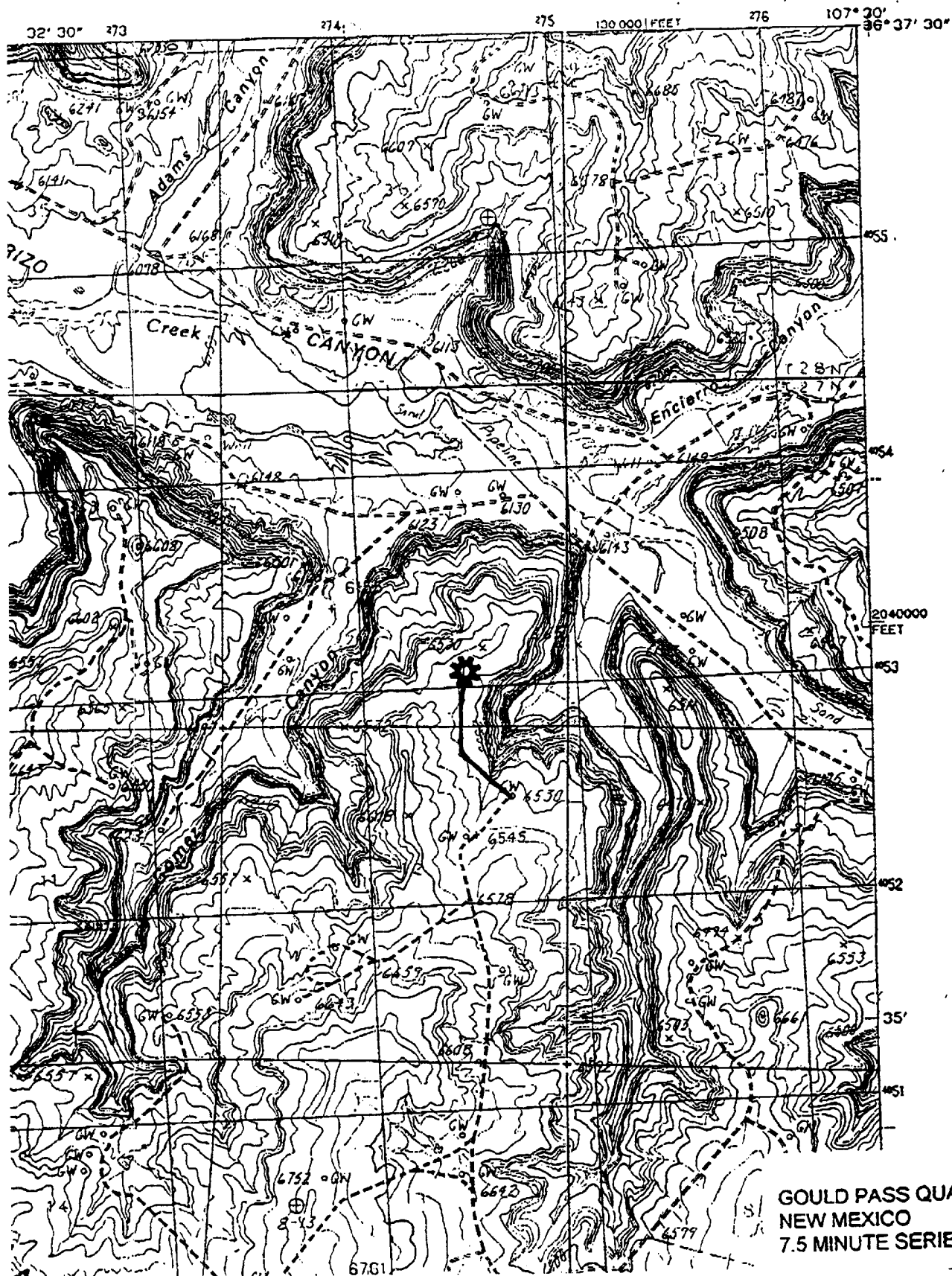
24 February, 1997

APPROVED

Roger Williamson  
DRILLING ENGINEER

11:04:04 AM  
25-Feb-97

CONOCO, INC  
SAN JUAN 28-7 #183M  
870' FSL - 1480' FEL  
SEC. 1, T27N-R7W  
RIO ARRIBA COUNTY, NM



—

—

—

—

—

—

—

—

—

—

—

—

—

—

—

—

—

—

—

—

—

—

—

—

—

—

—

—

—

—

—

—

—

—

—

—

—

—

—

—

—

—

—

—

—

—

—

—

—

—

—

—

—

—

—

—

—

—

—

—

—

—

—

—

—

—

—

—

—

—

—

—