

UNITED STATES
DEPARTMENT OF THE INTERIOR
BUREAU OF LAND MANAGEMENT

APPLICATION FOR PERMIT TO DRILL, DEEPEN, OR PLUG BACK

1a. Type of Work
DRILL

RECEIVED
MAR - 6 1998

5. Lease Number SF-079391
Unit Reporting Number

1b. Type of Well
GAS

OIL CON. DIV.
DIST. 3

6. If Indian, All. or Tribe

2. Operator
BURLINGTON RESOURCES
1453P Oil & Gas Company

7. Unit Agreement Name
San Juan 27-5 Unit

3. Address & Phone No. of Operator
PO Box 4289, Farmington, NM 87499
(505) 326-9700

8. Farm or Lease Name
7454 San Juan 27-5 Unit
9. Well Number
2C

4. Location of Well
1185' FNL, 85' FEL
Latitude 36° 35.5, Longitude 107° 21.3

10. Field, Pool, Wildcat
72319 Blanco Mesa Verde ✓
11. Sec., Twn, Rge, Mer. (NMPM)
A Sec 9, T-27-N, R-5-W ✓
API # 30-039-25900 ✓

14. Distance in Miles from Nearest Town
6 miles to Gobernador

12. County Rio Arriba 13. State NM

15. Distance from Proposed Location to Nearest Property or Lease Line
85'

16. Acres in Lease

17. Acres Assigned to Well
E/2 320 ✓

18. Distance from Proposed Location to Nearest Well, Drig, Compl, or Applied for on this Lease
1300'

19. Proposed Depth
6040' This action is subject to technical and procedural review pursuant to 43 CFR 3105.3 and appeal pursuant to 43 CFR 3105.4.

20. Rotary or Cable Tools
Rotary

21. Elevations (DF, FT, GR, Etc.)
6638' GR

22. Approx. Date Work will Start

DRILLING OPERATIONS AUTHORIZED ARE
SUBJECT TO COMPLIANCE WITH ATTACHED
"GENERAL REQUIREMENTS"

23. Proposed Casing and Cementing Program
See Operations Plan attached

24. Authorized by: [Signature]
Regulatory/Compliance Administrator

1/2/98
Date

PERMIT NO. _____

APPROVAL DATE MAR 04 1998

APPROVED BY /s/ Duane W. Spencer

TITLE _____

DATE MAR 4 1998

Archaeological Report submitted

Threatened and Endangered Species Report submitted

NOTE: Notice of Staking was submitted for this location as SJ 27-5 Unit #2A, name changed to #2C

1404 C-104 FOR WSL @
R-10936 Confill Pilot NMOC

District I
PO Box 1980, Hobbs, NM 88241-1980

District II
PO Drawer 00, Artesia, NM 88211-0719

District III
1000 Rio Brazos Rd., Aztec, NM 87410

District IV
PO Box 2088, Santa Fe, NM 87504-2088

State of New Mexico
Energy, Minerals & Natural Resources Department

OIL CONSERVATION DIVISION
PO Box 2088
Santa Fe, NM 87504-2088

Form C-
Revised February 21, 1981
Instructions on 1
Submit to Appropriate District Of
State Lease - 4 Col
Fee Lease - 3 Col

☐ AMENDED REPC

000000 PM 3:25

WELL LOCATION AND ACREAGE DEDICATION PLAT

API Number 30-039-25800		Pool Code 72319	Pool Name Blanco Mesaverde
Property Code 7434	Property Name SAN JUAN 27-5 UNIT		Well Number 2C
OGRID No. 14538	Operator Name BURLINGTON RESOURCES OIL & GAS COMPANY		Elevation 6638

10 Surface Location

UL or lot no. A	Section 9	Township 27N	Range 5W	Lot Idn	Feet from the 1185	North/South line North	Feet from the 85	East/West line East	County RIO ARRIE
--------------------	--------------	-----------------	-------------	---------	-----------------------	---------------------------	---------------------	------------------------	---------------------

11 Bottom Hole Location If Different From Surface

UL or lot no.	Section	Township	Range	Lot Idn	Feet from the	North/South line	Feet from the	East/West line	County
---------------	---------	----------	-------	---------	---------------	------------------	---------------	----------------	--------

12 Dedicated Acres E/320	13 Joint or Infill	14 Consolidation Code	15 Order No.
-----------------------------	--------------------	-----------------------	--------------

NO ALLOWABLE WILL BE ASSIGNED TO THIS COMPLETION UNTIL ALL INTERESTS HAVE BEEN CONSOLIDATED
OR A NON-STANDARD UNIT HAS BEEN APPROVED BY THE DIVISION

16	5360.52'	1185'	85'	5406.72'	5314.98'	17 OPERATOR CERTIFICATION I hereby certify that the information contained here- true and complete to the best of my knowledge and be- Signature Peggy Bradfield Printed Name Regulatory Administra Title 1-2-98 Date
						18 SURVEYOR CERTIFICATION I hereby certify that the well location shown on this was plotted from field notes of actual surveys made or under my supervision, and that the same is true & correct to the best of my belief. OCTOBER 23 Date of Survey Signature and Seal of Professional Surveyor NEW MEXICO 6857 6857 Certificate Number

OPERATIONS PLAN

Well Name: San Juan 27-5 Unit #2C
Location: 1185' FNL, 85' FEL Section 9, T-27-N, R-5-W
Rio Arriba County, New Mexico
Latitude 36° 35.5, Longitude 107° 21.3
Formation: Blanco Mesa Verde
Elevation: 6638' GL

<u>Formation Tops:</u>	<u>Top</u>	<u>Bottom</u>	<u>Contents</u>
Surface	San Jose	2810'	aquifer
Ojo Alamo	2810'	3050'	aquifer
Fruitland	3050'	3475'	
Pictured Cliffs	3475'	3570'	gas
Lewis	3570'	3950'	gas
Intermediate TD	3670'		
Huerfano Bentonite	3950'	4420'	
Chacra	4420'	5140'	
Massive Cliff House	5140'	5290'	gas
Menefee	5290'	5640'	gas
Massive Point Lookout	5640'		gas
Total Depth	6040'		

Logging Program:

Cased hole logging - Gamma Ray Neutron
Coring/DST - none

Mud Program:

<u>Interval</u>	<u>Type</u>	<u>Weight</u>	<u>Vis.</u>	<u>Fluid Loss</u>
0- 200'	Spud	8.4-9.0	40-50	no control
200-3670'	LSND	8.4-9.0	30-60	no control
3670-6040'	Gas/Mist	n/a	n/a	n/a

Pit levels will be visually monitored to detect gain or loss of fluid control.

Casing Program (as listed, the equivalent, or better):

<u>Hole Size</u>	<u>Depth Interval</u>	<u>Csg. Size</u>	<u>Wt.</u>	<u>Grade</u>
12 1/4"	0' - 200'	9 5/8"	32.3#	H-40
8 3/4"	0' - 3670'	7"	20.0#	J-55
6 1/4"	3570' - 6040'	4 1/2"	10.5#	J-55

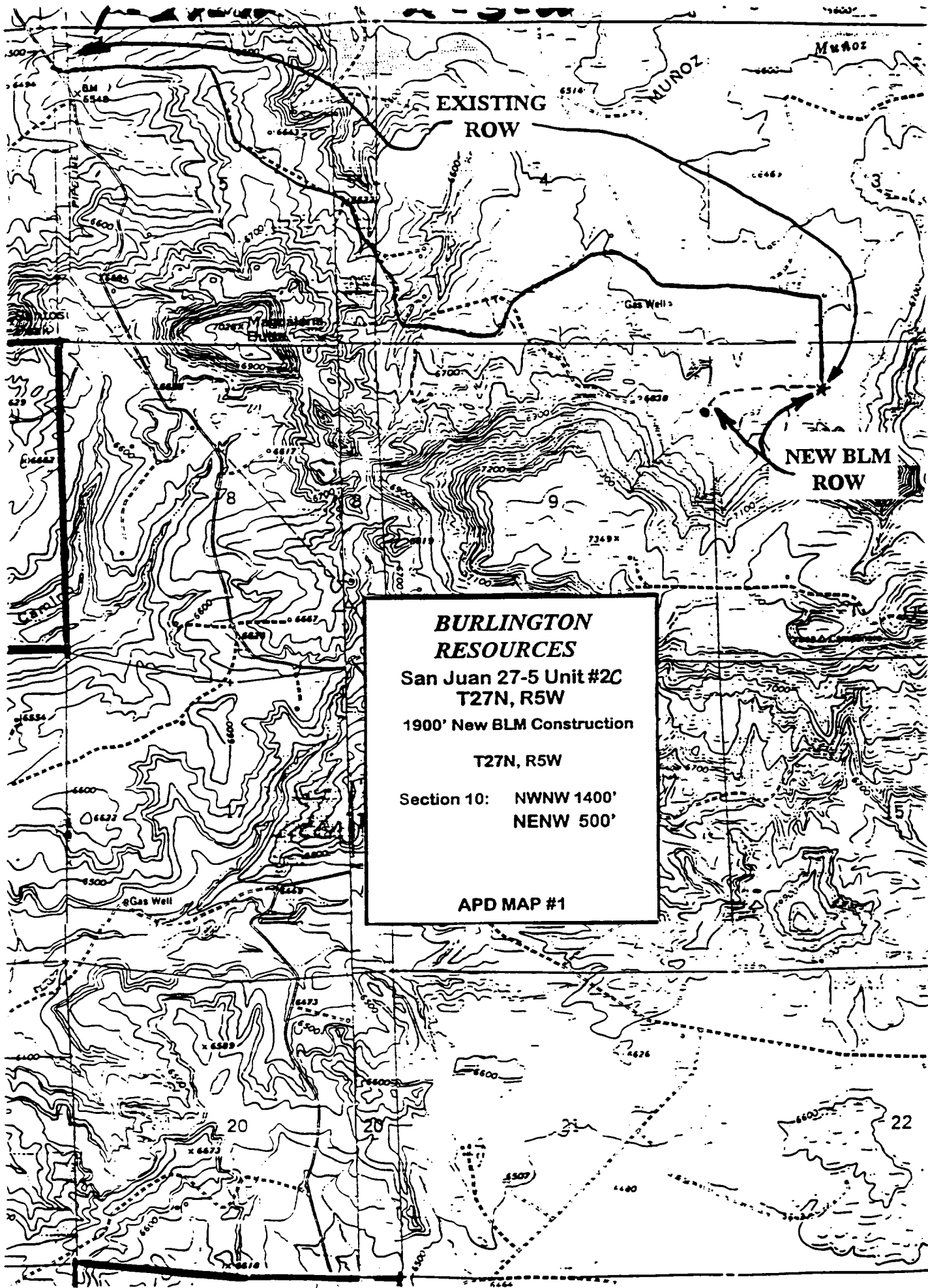
Tubing Program:

0' - 6040'	2 3/8"	4.7#	J-55
------------	--------	------	------

BOP Specifications, Wellhead and Tests:

Surface to Intermediate TD -

11" 2000 psi minimum double gate BOP stack (Reference Figure #1).
After nipple-up prior to drilling out surface casing, rams and casing will be tested to 600 psi for 30 minutes.



**BURLINGTON
RESOURCES**

**San Juan 27-5 Unit #2C
T27N, R5W**

1900' New BLM Construction

T27N, R5W

**Section 10: NWNW 1400'
NENW 500'**

APD MAP #1