

UNITED STATES
DEPARTMENT OF THE INTERIOR
BUREAU OF LAND MANAGEMENT

(Other instructions on
reverse side)

FORM APPROVED
OMB NO. 1004-0138
Expires February 28, 1995

APPLICATION FOR PERMIT TO DRILL OR DEEPEN

1a. TYPE OF WORK

DRILL ☒

DEEPEN ☐

b. TYPE OF WELL

OIL
WELL ☐

GAS
WELL ☒

OTHER

SINGLE
ZONE ☒

MULTIPLE
ZONE ☐

2. NAME OF OPERATOR

Conoco Inc.

5073

a. ADDRESS AND TELEPHONE NO

10 Desta Dr. Ste 430E, Midland, Tx. 79705-4500

4. LOCATION OF WELL (Report location clearly and in accordance with any State requirements *)

At surface

1815' FNL & 1160' FWL

At proposed prod. zone

1815' FNL & 1160' FWL

14. DISTANCE IN MILES AND DIRECTION FROM NEAREST TOWN OR POST OFFICE*

5. DISTANCE FROM PROPOSED*
LOCATION TO NEAREST
PROPERTY OR LEASE LINE, FT.
(Also to nearest drlg. unit line, if Any)

16 NO OF ACRES IN LEASE

17. NO. OF ACRES ASSIGNED
TO THIS WELL

8. DISTANCE FROM PROPOSED LOCATION*
TO NEAREST WELL, DRILLING, COMPLETED,
OR APPLIED FOR, ON THIS LEASE, FT.

19. PROPOSED DEPTH

20. ROTARY OR CABLE TOOLS

21. ELEVATIONS (Show whether DF, RT, GR, etc)

6219' GR

22. APPROX. DATE WORK WILL START*

9/15/98

23

PROPOSED CASING AND CEMENTING PROGRAM

SIZE OF HOLE	GRADE, SIZE OF CASING	WEIGHT PER FOOT	SETTING DEPTH	QUANTITY OF CEMENT
12-1/4"	K-55, 9-5/8"	36#	300' 370'	160 sxs, circ.
8-3/4" & 7-7/8"	K-55, 5-1/2"	15.5#	7049'	1205 sxs, circ

It is proposed to drill a vertical wellbore to the Basin Dakota Pool. An NOS was filed 10/30/97. The well will be drilled and equipped according to the following additional attachments:

1. Well Location & Acreage Dedication Plat (C-102).
2. Proposed Well Plan Outline.
3. Cementing Plan.
4. Blowout Preventer Hookup.
5. Surface Use Plan with Production Facility layout.
6. Pipeline Tie Specifications with plat.

This action is subject to technical and
procedural review pursuant to 43 CFR 3165.3
and appeal pursuant to 43 CFR 3165.4.

DRILLING OPERATIONS AUTHORIZED ARE
SUBJECT TO COMPLIANCE WITH ATTACHED
"GENERAL REQUIREMENTS"

This application includes ROW's for the well pad, cathodic protection, access road and pipeline.

IN ABOVE SPACE DESCRIBE PROPOSED PROGRAM: If proposal is to deepen give data on present productive zone and proposed new productive zone. If proposal is to drill or deepen directionally, give pertinent data on subsurface locations and measured and true vertical depths. Give blowout preventer program, if any.

24.

SIGNED

Jo Ann Johnson

TITLE

Jo Ann Johnson

Sr. Property Analyst

DATE

8/6/98

(This space for Federal or State office use)

PERMIT NO

APPROVAL DATE

Application approval does not warrant or certify that the applicant holds legal or equitable title to those rights in the subject lease which would entitle the applicant to conduct operations thereon.

CONDITIONS OF APPROVAL, IF ANY:

APPROVED BY

/s/ Duane W. Spencer

TITLE

DATE

AUG 21 1998

*See Instructions On Reverse Side

Title 18 U.S.C. Section 1001, makes it a crime for any person knowingly and willfully to make to any department or agency of the United States any false, fictitious or fraudulent statements or representations as to any matter within its jurisdiction.

NMOC

District I
PO Box 1980, Hobbs, NM 88241-1980

District II
PO Drawer DD, Artesia, NM 88211-0719

District III
1000 Rio Brazos Rd., Aztec, NM 87410

District IV
PO Box 2088, Santa Fe, NM 87504-2088

State of New Mexico
Energy, Minerals & Natural Resources Department

OIL CONSERVATION DIVISION
PO Box 2088
Santa Fe, NM 87504-2088

Form C-102
Revised February 21, 1994

Instructions on back
Submit to Appropriate District Office
State Lease - 4 Copies
Fee Lease - 3 Copies

☐ AMENDED REPORT

WELL LOCATION AND ACREAGE DEDICATION PLAT

*API Number 30-039-25954		*Pool Code 71599	*Pool Name Basin Dakota
*Property Code N/A 23642	*Property Name PORKCHOP FEDERAL 27		*Well Number 1E
*OGRIQ No. 05073	*Operator Name CONOCO, INC.		*Elevation 6219'

¹⁰ Surface Location

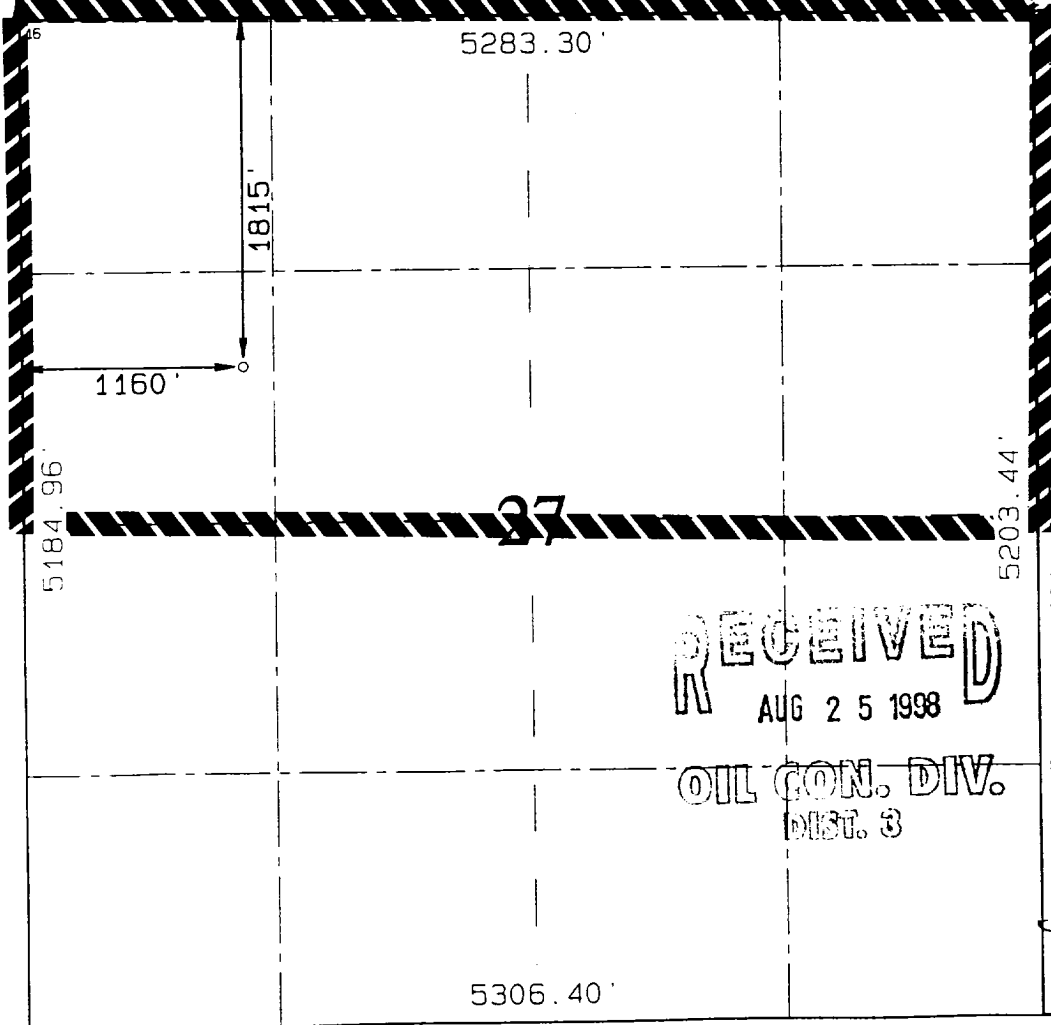
UL or lot no. E	Section 27	Township 26N	Range 7W	Lot Idn	Feet from the 1815	North/South line North	Feet from the 1160	East/West line West	County RIO ARriba
--------------------	---------------	-----------------	-------------	---------	-----------------------	---------------------------	-----------------------	------------------------	----------------------

¹¹ Bottom Hole Location If Different From Surface

UL or lot no.	Section	Township	Range	Lot Idn	Feet from the	North/South line	Feet from the	East/West line	County
---------------	---------	----------	-------	---------	---------------	------------------	---------------	----------------	--------

¹² Dedicated Acres 320	¹³ Joint or Infill Y	¹⁴ Consolidation Code	¹⁵ Order No.
--------------------------------------	------------------------------------	----------------------------------	-------------------------

NO ALLOWABLE WILL BE ASSIGNED TO THIS COMPLETION UNTIL ALL INTERESTS HAVE BEEN CONSOLIDATED
OR A NON-STANDARD UNIT HAS BEEN APPROVED BY THE DIVISION



OPERATOR CERTIFICATION
I hereby certify that the information contained herein is true and complete to the best of my knowledge and belief

Signature
Mike L. Mankin
Printed Name
Right-Of-Way Agent
Title
8/6/98
Date

¹⁸ SURVEYOR CERTIFICATION

I hereby certify that the well location shown on this plat was plotted from field notes of actual surveys made by me or under my supervision, and that the same is true and correct to the best of my belief.

November 15, 1997
Date of Survey

Signature and Seal of Professional Surveyor

NEALE C. EDWARDS
NEW MEXICO
6857
Certificate Under
Professional Surveyor

CONOCO, INC. PORKCHOP FEDERAL 27-1E

1815' FNL 1160' FWL SEC 27, T26N, R7W
RIO ARriba COUNTY, NEW MEXICO

